

BN-LINK®

PRODUCT #BNH-60/U92

12 HOUR MECHANICAL COUNTDOWN TIMER



Intertek

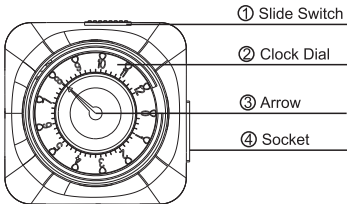
ENERGY
SAVING

Please keep this handbook

www.bn-link.com

Designed in California, Made in China

PRODUCTS VIEW



① **Slide Switch:**

Slide the switch to “⌚” position for timing.
Slide the switch to “ON” for always ON.

② **Clock Dial:**

Indicates countdown programs.

The numbers 1-12 represent 1-12 hours and each scale represents 15 minutes.

③ **Arrow:** Indicates the chosen countdown time.

④ **Socket:**

Only intended to be used with a grounded device.

RATINGS

Rated Voltage:

125V, 60Hz

Max.Load:

15A/1875W Resistive, 8A/1000W Tungsten

1/2HP,TV-5

WARNING

- Electrical shock hazard
- Risk of injury or death
- Risk of fire
- Use a grounded outlet
- Follow local electrical codes
- For indoor use only
- Keep children away
- Unplug timer before cleaning
- Fully insert plug
- Do not use in wet locations
- Do not exceed electrical ratings

APPLICATIONS

- Lighting
- TV
- Humidifiers
- Nebulizers
- Automates fans
- Indoor sprinklers
- Aquariums
- Ventilators

OPERATING INSTRUCTIONS

Step 1. Set the countdown time for the timer to be “ON”

Rotate the clock dial clockwise until the arrow aligns with the countdown time you need. (Fig 1)

Example: The desired countdown time is 8 hours, please rotate the dial clockwise until the arrow aligns with 8 on the dial. (Fig 2)

Note: Please do not attention that can't rotate the dial anti-clockwise.

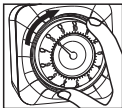


Fig 1

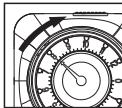


Fig 2

Step 2. Set “SLIDE SWITCH”

After setting Step 1, slide the switch to “⊖” position, the timer will automatically turn your attached device on at once and turn it off when the countdown time is up. When the switch is in “ON” position, the timer will bypass the countdown program and your attached device will remain ON. (Fig 4)

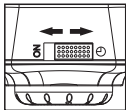


Fig 3

Step 3. Plug the timer into an electrical outlet

The timer will rest against the outlet. (Fig 4)

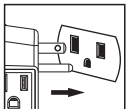


Fig 4

Step 4. Attach one device to the timer

Plug the device into the outlet on the side of the timer. Make sure the attached device is switched ON. (Fig 5)

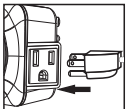


Fig 5

HELPFUL TIPS

1. The countdown program runs once only and does not repeat daily.
2. You can set countdown time from 15 minutes to 12 hours.
3. Switching the unit to "ON" will bypass the program.
4. The time will stop operating if the power goes out. Once power is resumed, reset the program as explained in Step 1 of the instructions if necessary.
5. The numbers 1-12 represent 1-12 hours and each scale represents 15 minutes.

TROUBLESHOOTING

● **PROBLEM:**

Appliances do not turn on as programmed.

○ **POSSIBLE CAUSE:**

Connected appliances are not in “ON” position; they are not functioning; timer is not receiving power, or “SLIDE SWITCH” is in the “ON” position.

○ **CORRECTIVE ACTION:**

Ensure the connected appliances are functional by plugging them directly into the outlet. Be sure the connected appliances are in the “ON” position if they have their own switch. Make sure the power outlet the timer is plugged in is active. Check that the “SLIDE SWITCH” is in “⏻” position.

BN-LINK INC.

12991 Leffingwell Avenue, Santa Fe Springs
Customer Service Assistance: 1.909.592.1881

E-mail: support@bn-link.com

[Http://www.bn-link.com](http://www.bn-link.com)

Hours: 9AM - 5PM PST, Mon - Fri

Designed in California Made in China