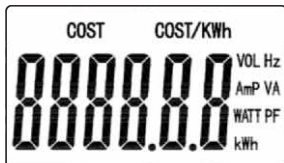
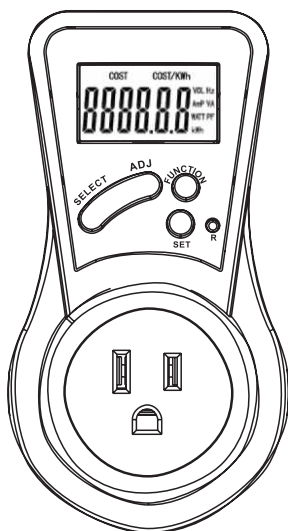


PLUG IN POWER ENERGY METER INSTRUCTION MANUAL

Ref.BNQ-U40N

PRODUCT VIEW



VOL: instant voltage

AmP: instant amperage

WATT: instant active power

PF: power factor

kwh: cumulative energy consumption

Hz: instant frequency

VA: instant apparent power

BUTTON DESCRIPTION:

FUNCTION: press to switch between different setting and display pages

SELECT: press to select

ADJ: press to adjust values

SET: press to enter a setting page

R: reset

OPERATING INSTRUCTIONS

1.SET UNIT COST

1.1 Press **SET** to enter the unit cost setting page.

1.2 Icon **COST/KWh** and numbers 88.88 will show with the 8 on centile flashing.

Use **ADJ** to adjust the flashing number (cycles from 0 to 9) and press

SELECT to confirm. The number on decile will now flash, use **ADJ** to adjust and **SELECT** to confirm. Repeat above steps till all four numbers are set as desired. In this setting page, all four numbers will be displayed even if the number on decade is 0.

1.3 Press **FUNCTION** to quit.

2. INFORMATION DISPLAY

- 2.1 When energized for the first time, LCD will show cumulative cost. Display range: 0.00-9999.99.
- 2.2 Press **FUNCTION** to display unit cost COST/KWh. Display range: 0.00-99.99.
- 2.3 Press **FUNCTION** to display cumulative power consumption in kWh with display range 0.00-9999.99.
- 2.4 Press **FUNCTION** to display instant active power. (Accuracy at 0.1 with active power not exceeding 100 WATT and accuracy at 1 with active power exceeding 100 WATT). Display range: 0.5-1875.
- 2.5 Press **FUNCTION** to display instant apparent power. (Accuracy at 0.1 with apparent power not exceeding 100 VA and accuracy at 1 with active power exceeding 100 VA). Display range: 0.5-1875.
- 2.6 Press **FUNCTION** to display instant voltage, e.g.: 125.0.
- 2.7 Press **FUNCTION** to display instant amperage with display range 0.00-15.00.
- 2.8 Press **FUNCTION** to display grid frequency, e.g.: 60.0.
- 2.9 Press **FUNCTION** to display power factor with display range 0.00-1.00.
- 2.10 Press **FUNCTION** to display COST as described in 2.1.

3. SPECIAL FUNCTION

- 3.1 Press **R** to reset the system. COST value will be displayed after reset.
- 3.2 Set or clear kWh value. When kWh value reaches 9999.99, press SET twice to enter the kWh setting page. The LCD will display 9999.99 with the 9 on centile flashing. Use ADJ to adjust and SELECT to confirm. To clear kWh value, adjust all numbers to 0 and confirm. COST value will also be cleared if kWh value is cleared.
- 3.3 Press **FUNCTION** till COST or KWH displays. Press and hold ADJ for 3 seconds to reset COST or KWH to 0.00.

TECHNICAL SPECIFICATIONS

VOLTAGE RATING: 125 VAC, 60 Hz.

INSTANT ACTIVE POWER DISPLAY RANGE: 0.5 WATT – 1875 WATT.

UNIT COST RANGE: 0.01-99.99

Do not exceed electrical ratings

FORMATION DISPLAY:

Voltage: VOL;

Frequency: Hz;

Instant active power: WATT;

Instant apparent power: VA;

Power factor: PF;

Unit cost: COST/KWh;

Power consumption: kWh;

Cost: COST;

BN-LINK INC.

12991 Leffingwell Avenue, Santa Fe Springs

Customer Service Assistance: 1.909.592.1881

E-mail: support@bn-link.com

Http://www.bn-link.com

Hours: 9AM - 5PM PST, Mon - Fri

Designed in California Made in China