

Smart Wall Socket User Guide

BNC-60/U183WT

Smart Home

Notes Before Installation

1. The smart wall socket supports 2.4GHz Wi-Fi network only (802.11b/g/n)
2. Basic electrical wiring knowledge or experience required, or please consult a professional electrician
3. Do not exceed electrical ratings of the device



Specifications

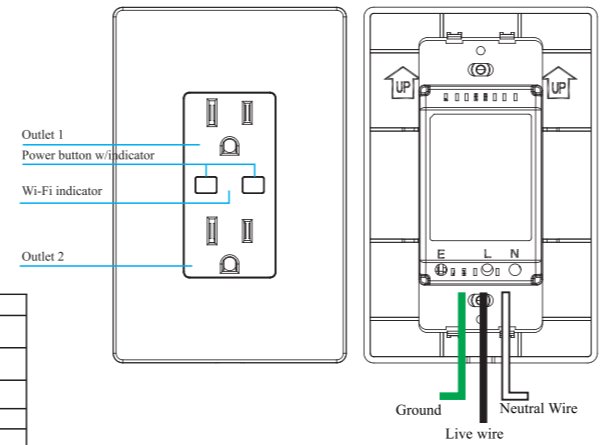
Type	Smart Wall Socket
Model	BNC-60/U183WT
Power supply mode	Neutral+Live Wire
Rated Current	15A(Max)
Rated Voltage	125VAC,60Hz
Load Power	15A/1875W Resistive 10A/1250W Tungsten 1/2HP
Wireless Frequency	2.4GHZ
Wireless Standard	IEEE802.11 b/g/n

Indicator status description

Indicator	Status	Description
Wi-Fi Indicator	Rapidly blinks	Ready for connection (Default Mode Only)
Wi-Fi Indicator	Slowly blinks (1 time every 3s)	Ready for connection (AP Mode Only)
Power Indicator +/v	Off	Power output is on
Power Indicator +/v	On	Power output is off
Wi-Fi Indicator	Off	No Internet access
Wi-Fi Indicator	On	Connected to Internet

Safety Notice:

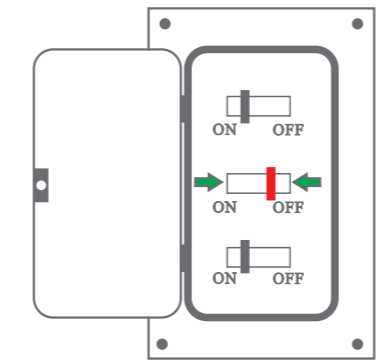
- Cut off the power before installation
- Installation of an RCD or current leakage protector suggested



Installation Guide

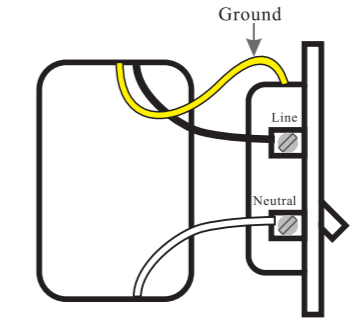
STEP.1

Turn off the circuit breaker to cut off the power supply to the wall outlet.



STEP.2

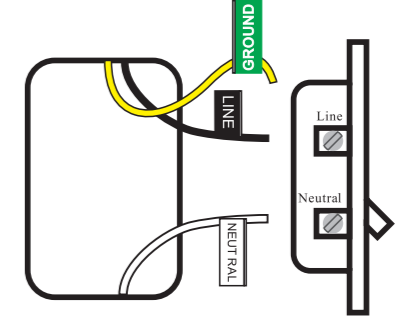
Remove the existing wall outlet and identify the line, neutral and ground wires.



Warning: If the existing wall outlet has two receptacles, you may find 4 or 5 wires. Please identify line, neutral and ground wires. The smart wall outlet requires one line wire, one neutral wire and one ground wire. Leave the other wires unconnected.

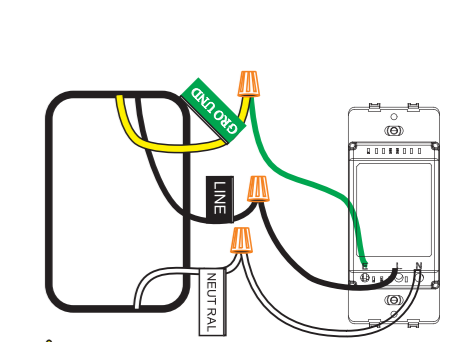
STEP.3

Mark or label the three required wires before installation.



STEP.4

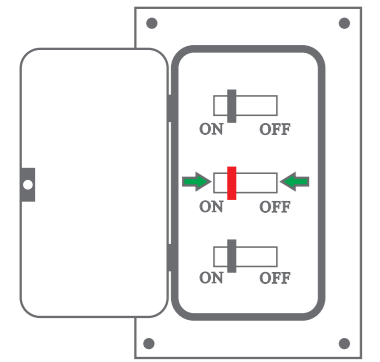
Use wire nuts to connect the wires of the smart wall outlet to the corresponding wires in the wall box. Mount the smart wall outlet and the faceplate in place.



Warning: For safety, please connect the ground wire. The above is for reference only and cannot be used as a standard.

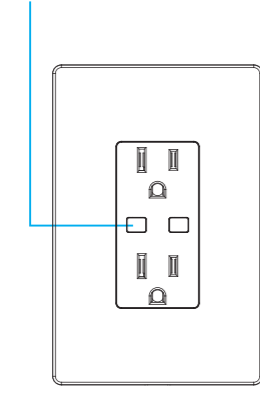
STEP.5

Turn on the circuit breaker to restore power supply to the wall outlet. Press either button on the wall outlet to make sure it is powered.



STEP.6

Press and hold the "left power button" button to initiate the connection between the wall outlet and your smart phone. Please refer to below App operating instructions.



Install the "BN-LINK SMART" APP

Step A: Find out "BN-LINK SMART" app in Apple app store, Google Play, or scan the QR code below and install it.

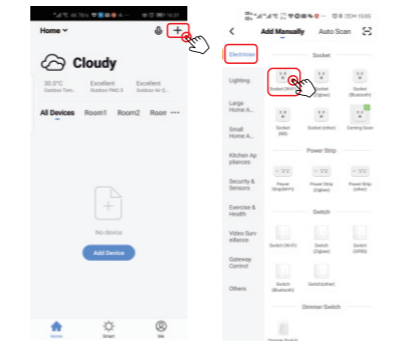


The free app "BN-LINK SMART" is compatible with mobile devices that support iOS 8.0 above, Android 4.4 above

Step B: Enter the register interface, input the email address/phone number for getting the verification code to register an account. Please just login if you already have a BN-LINK SMART account.

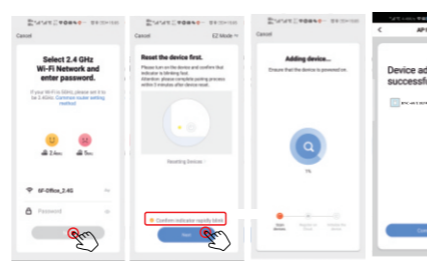
Step C: Add the switch to BN-LINK SMART APP

Note: This smart switch can only support 2.4G network and cannot work with 5.0G network. please check if your home network is 2.4G and make sure that your phone has been connected to your WI-FI home network
(1) Tap "+" button on top right corner to add device, the tap "Wall switch" to enter next page.



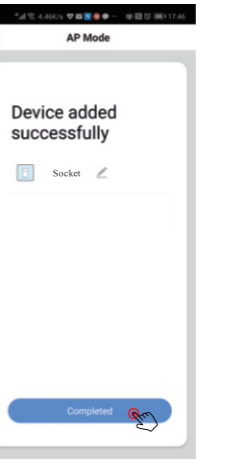
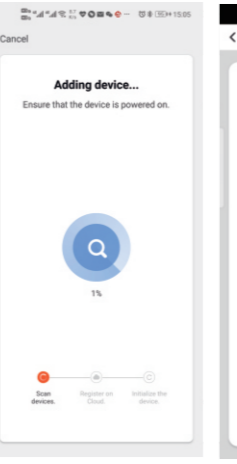
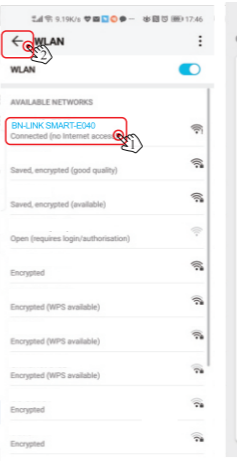
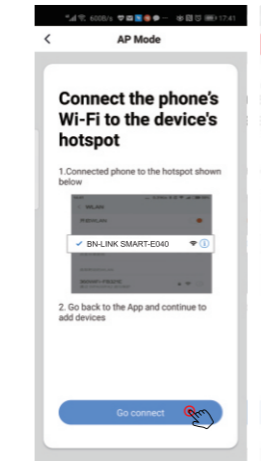
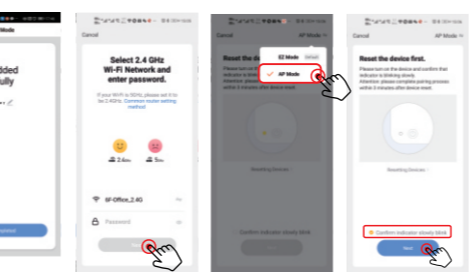
Default Mode (Recommend)

Indicator light rapidly blinks (2 times per second)
Step.1: Make sure the indicator blinks rapidly. If not, hold the any ON/OFF button for 7-10 seconds for reset.



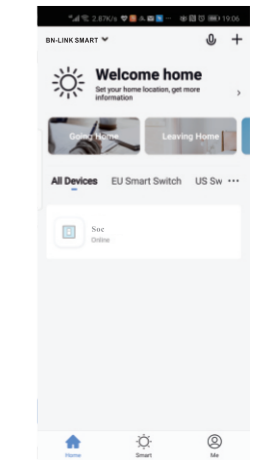
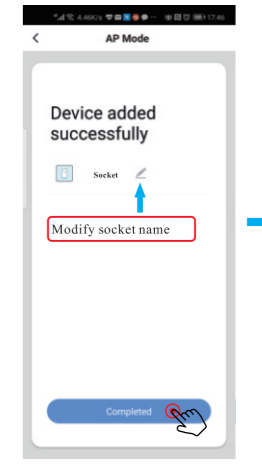
Mode (Alternative)

Indicator light slowly blinks (1 time every 3 second)
Step.1: When the indicator blinks rapidly, press and hold the any ON/OFF button for another 7-10 seconds. the indicator will blinks slowly.

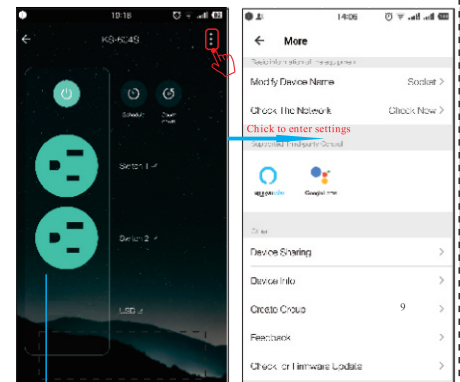


Step D: Give a name to the switch and tap "Completed". you will find the device you've named is shown on the app home page. Tap the device to enter the setting page.

Note: The name you give to the device will be the name for voice control on Amazon Alexa or Google Home later. For example, the device is named "Socket" in this user guide.



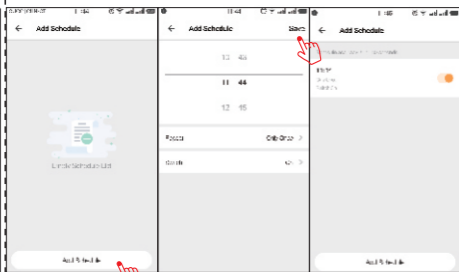
After completing Part Two, you can control the socket with BN-LINK SMART APP on this setting page now. **note:** Two socket holes can be controlled separately, long press "Socket1 or Socket2" to rename



Try on/off and timer functions on the app to control the socket.

Try timer function to easily set up schedule to turn on/off smart socket.

Note: Two socket holes can be individually timed



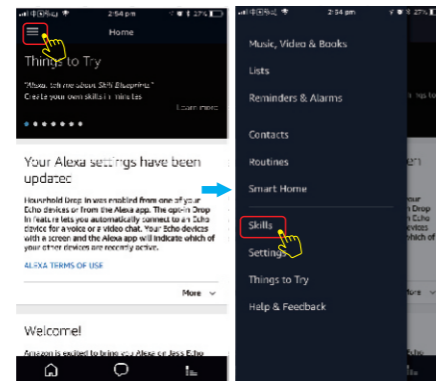
Note: If you want to control the light with Amazon Alexa, please continue to read Page 10.

If you want to control the light with Google Home, please skip Page 10 and read Page 13 directly.

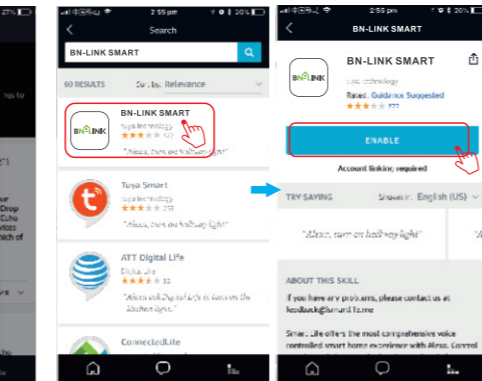
How to control the switch with Amazon Alexa?

Please make sure that your Alexa APP is connected to Amazon Echo, and both work together successfully under your Wi-Fi home network.

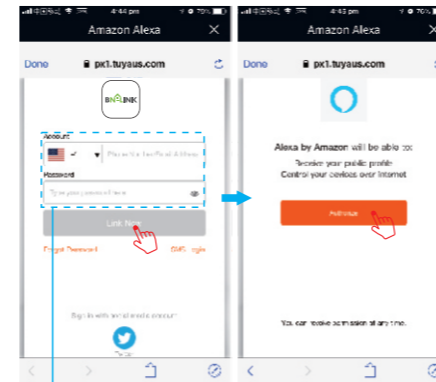
Step .A: Log in your Alexa APP, tap top left corner, and tap "Skills".



Step .B: Type "BN-LINK SMART", find "BN-LINK SMART" form the search result and tap it to enable the skill.

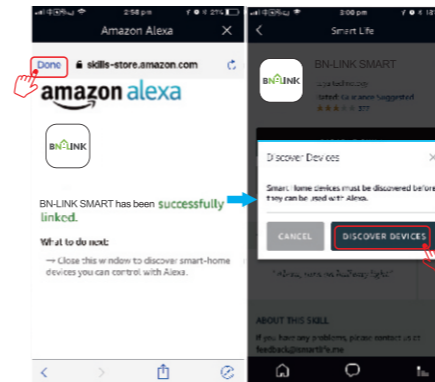


Step .C: Enter your account and password of "BN-LINK SMART" app, tap "Link now". then tap "Authorize" on the next page to bind BN-LINK SMART account to Alexa.

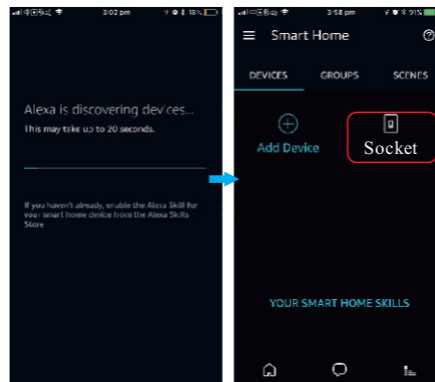


Same account and password as BN-LINK SMART App

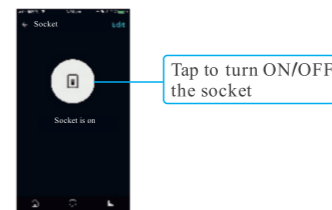
Step .D: Once your BN-LINK SMART account is successfully bound to Alexa, the following page will pop up. Tap "Done" on top left corner, the tap "DISCOVER DEVICES" on the next page .



Step .E: Wait a few seconds for Alexa to detect the switch from BN-LINK SMART app. and you will find the device named "Socket" has been paired to Alexa APP from "BN-LINK SMART" APP.



After Step E is done, you can now control the switch with Alexa app on this setting page.



Tap to turn ON/OFF the socket

Step .F: Now you are able to control the socket via Amazon Alexa . Try these commands and see what happens by asking Alexa: Alexa, turn off "device name" Note: The device name is the one you give to the socket on "BN-LINK SMART" App . In this user guide, the device is named "Socket 1" . For example: "Alexa, turn on Socket 1", "Alexa, turn off Socket 1" etc .

If you also want to control the socket with Google home, you can continue to read next page .

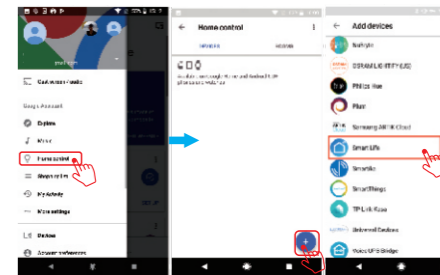
How to control the switch with Google Home?

Preparation:

- Have downloaded the Google Home app
- Have registered your Google Account (only support US account)
- Have paired Smart Socket with BN-LINK SMART App and named with simply and easily recognizable name .
- Have finished setting up Google Home

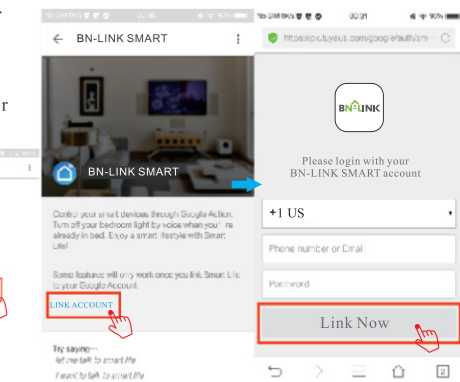
Step .A: Open your Google Home APP, tap "Home Control" on the left side bar page .

Step .B: Tap "+" button on the button right to enter next page .

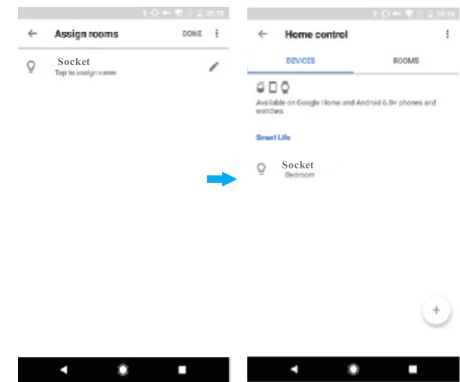


Step .C: Find "BN-LINK SMART" from the side bar list

Step .D: Enter your account and password of "BN-LINK SMART" app, tap "Link now". then tap "Authorize" on the next page to bind BN-LINK SMART account to Google Home .



Step .E: You will find that Google Home has found the device named "Socket" on this page .



Step .F: Now you are able to control the socket via Google Home . Try these commands and see what happens by asking Google ok, Google, turn on "device name" ok, Google, turn off "device name"

Note: The device name is the one you give to the switch on "BN-LINK SMART" App . In this user guide, the device is named "Socket 1" .

For example: "ok, Google, turn on Socket 1" "ok, Google, turn off Socket 1" etc .

FAQ

Please note when adding device:

1. Confirm device is powered on .
2. Confirm device is waiting for network configuration .
3. Confirm that device, smart phone and router are as close to each other.
4. Make sure the network function of router and smart phone are unblocked.
5. Confirm the entered router password is correct .
6. Confirm adding device is under 2.4G Wi-Fi channel. Enable broadcast and not allow to hide Wi-Fi.
7. Confirm that router's encryption method is WPA2-PSK and authentication type is AES, or both are set up as automatic .
8. Confirm that Wi-Fi name contains letters only.
9. If router's connected device reach the amount limit. Please try to turn off some devices Wi-Fi function and configure again .

10. If router enables MAC address filter, please try removing the device form MAC filter list and make sure router is allowing device to be connected.

Control device under 2G/3G/4G network? Device and smart phone must be in the same Wi-Fi environment when adding device. After successful adding, device can be control via mobile network.

How to share my device with family?

Open App, enter into "shared device", tap "add sharing" to share device with family.

How to add device?

Two methods to add device: "Default Mode" and "AP Mode". "Default Mode" is set up as default and can switch to "AP Mode"

Why can't I control the load after installing the product?

1. Please check if the wiring is correct.
2. Please check if there is a neutral line in the cassette (neutral line is required)
3. Please check if the connected load exceeds the maximum value of the device .

FCC NOTE:

This device complies with Part 15 of the FCC Rules. Operation is subject to the following two conditions:

- (1) this device may not cause harmful interference,
- (2) this device must accept any interference received, including interference that may cause undesired operation . The manufacturer is not responsible for any radio or tv interference caused by unauthorized modifications or change to this equipment. Such modifications or change could void the user's authority to operate the equipment. This equipment has been tested and found to comply with the limits for a Class B digital device, pursuant to part 15 of the FCC Rules. These limits are designed to provide reasonable protection against harmful interference in a residential installation . This equipment generates, uses and can radiate radio frequency energy and, if not installed and used in accordance with the instructions, may cause harmful interference to radio communications. However, there is no guarantee that interference will not occur in a particular installation. If this equipment does cause harmful interference to radio or television reception, which can be determined by turning the equipment off and on, the user is encouraged to try to correct the interference by one or more of the following measures:
 - Reorient or relocate the receiving antenna .
 - Increase the separation between the equipment and receiver.
 - Connect the equipment into an outlet on a circuit different from that to which the receiver is connected.
 - Consult the dealer or an experienced radio/TV technician for help.

RF warning statement: To maintain compliance with FCC's RF exposure guidelines, this equipment should be installed and operated with a minimum distance of 20cm between the radiator and your body.

BN-LINK INC.
11701 6th Street, Rancho Cucamonga, CA 91730
Customer Service Assistance: 1.909.592.1881
E-mail: support@bn-link.com
Http://www.bn-link.com
Hours: 9AM - 5PM PST, Mon - Fri
Designed in California Made in China