



6-Outlet Outdoor Wi-Fi Smart Yard Stake

-1-

Trouble reading this guide?  
Use this link for PDF version

[www.bn-link.com](http://www.bn-link.com)

Need Help?

Email: [support@bn-link.com](mailto:support@bn-link.com)

Web: [www.bn-link.com/ticket](http://www.bn-link.com/ticket)

-2-

NOTE: Hold ON/OFF button for 5 seconds while it is plugged in to restore the factory setting if you want to erase the plug's current settings.

### ►Indicator Light Status

Blue light blinks every 0.5 second-Easy Mode connection

Blue light blinks every 2 seconds- AP Mode connection

Red light-Power on

### ►Parameter

125V 60Hz

-3-

15A/1875W Resistive  
10A/1250W Tungsten 1/2 HP  
Working Temp: -10 ~60 °C  
Wi-Fi Frequency: 2.4 GHz  
Do not exceed electrical ratings

### ►Install the “HBN Smart ”App

1. Search for HBN Smart App on App store/Google Play Store, or just scan the QR code below to download. (For iPhone, you can use build-in camera to scan the QR code. For Android, you may need barcode scanner to do that.

-4-

Please confirm the App icon before downloading.)  
PS: You can also add this smart plug to HBN Smart app directly if you already have it on your phone, it is compatible and works the same way.

2. Register an account and memorize the password, enter your email address or your phone number, then obtain verification code to complete the registry.

-5-



HBN Smart

### ►Connect with Your Cellphone Requirements: 2.4GHz Wi-Fi network

Please note:

1.If you only have 5GHz Wi-Fi router,you will not be able to complete the connection.

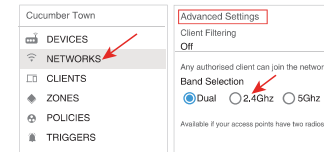
-6-

2. If you are using a dual Wi-Fi router and it broadcast 2 Wi-Fi signals, make sure that your phone is connected with the 2.4GHz Wi-Fi signal, it should be the Wi-Fi signal that next to “\_5G” .



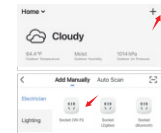
-7-

3. If you are using a dual-band Wi-Fi router but it broadcast only 1 Wi-Fi signal, you will have to manage your Wi-Fi router and change the settings to have 2.4GHz Wi-Fi.

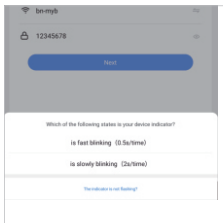


-8-

---> Confirm the smart plug is plugged into a live outlet  
---> Open HBN Smart app  
---> Choose the “+” symbol,  
---> “Socket(wifi)”  
---> Input password of your 2.4 GHz Wi-Fi network and tap “Next”.



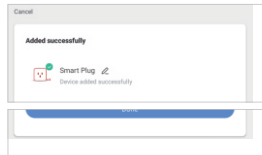
-9-



A: For Easy Mode Connection- Blue indicator Light Blink Rapidly ( Twice a second ).

-10-

---> Confirm the light status on your plug and tap the option “is fast blinking (0.5s/time)” in the pop-up menu. ( If you don't see blue light quickly blinking,press On/Off button to reset.)  
---> Rename the device or tap “Done”.

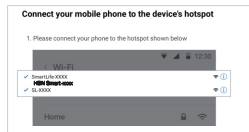


-11-

B: AP Mode(Indicator light blinks once every 2 seconds ) If the Easy mode connection failed, please remove and install the smart plug into your power outlet again. When the indicator is blinking quickly, it is in Easy mode. Hold the power button for about 7 seconds to enter into AP mode. Once you see the indicator light slowly blinking(every 2 seconds), you can start to try the AP mode connection.

---> Tap the option “is slowly blinking (2 s/time)” in the pop-up menu.

-12-



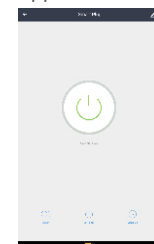
-13-

-->Tap “Go to Connect” and choose Wi-Fi hotspot named “HBN Smart-xxx”, then go back to HBN Smart application;  
-->Wait till successful configuration and rename the device or tap “Done”.



-14-

### ►Getting to Know HBN Smart App



- Switch
- ⌚ Left time
- ⌚ Schedule

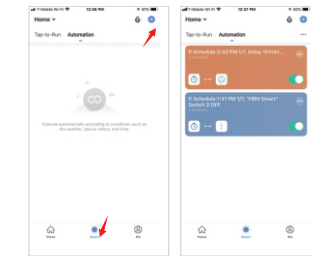
-15-

Note: edit the default names in this interface, for better management.

### ►Create Automations/Groups

You can create certain scenes and groups on HBN Smart App, it allows you to control different smart devices in different rooms at the same time.

-16-



-17-

### ►Device Sharing

If you want to give others the permission to control your smart plug, you can authorize that by activating the device sharing function

Go to the HBN Smart app  
-->Choose the device you want to share  
-->Choose Edit Button -->Choose shared devices  
-->Add sharing-->Enter his/her HBN Smart account  
-->Search and complete.

-18-

## ▶ How To Connect with Amazon Alexa

### Requirements:

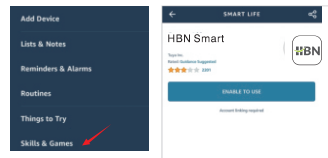
1. Amazon Alexa Device and Alexa App
2. The Smart Plug connected with HBN Smart App
3. HBN Smart App user ID and password.

Add HBN Smart as a “Skill” for Alexa  
Open Alexa app and choose Skills & Games

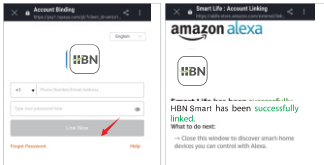
- > Search for HBN Smart
- > ENABLE TO USE
- > Enter the HBN Smart account

-19-

-->Authorize to use  
-->Choose BN-LINK Smart And then, the devices you added on will sync to Alexa App. You can also ask Alexa to discover new devices for you in this moment.



-20-

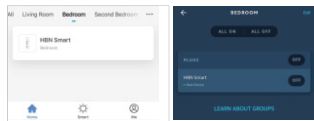


How to ask Alexa to turn on/off Smart Plug

First, you will need to make sure the names for the plug are the same on the Alexa app and on the HBN Smart app. If they are not the same, Alexa will not

-21-

be able to identify the plug.



HBN Smart App

Alexa App

Things you can do with Alexa

- \* Voice Control the smart plug
- \* Remote Control the smart plug via Alexa App.
- \* Add the smart plug to certain groups

-22-

on Alexa App. You should make sure all the smart devices' names at your home are nonrepetitive and recognizable for Alexa. For other questions about Alexa, please find out with Amazon Alexa support page, or contact us for help directly by email.

Tips for using Alexa Voice Control  
Please make sure the device name you set for the smart plug is unique and recognizable for Alexa voice assistant. You should make sure all the smart devices names at your home are non-repetitive and recognizable for Alexa.

-23-

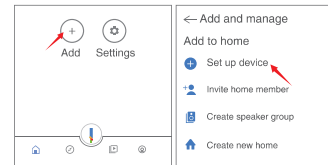
Voice assistant system needs the exact command to do the work.

## ▶ How To Connect with Google Home

After you've connected the smart plugs with the HBN Smart app successfully, you can start to link them to Google Home app:

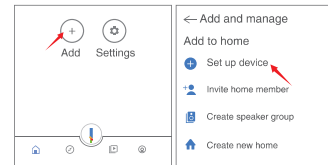
- Open Google Home app and find “Set up device”
- >Click “Works with Google”
- >Search HBN Smart
- >Enter your HBN Smart account
- >Authorize to use.

-24-

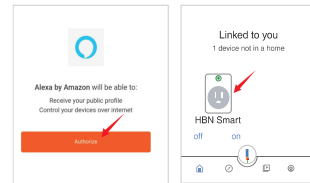
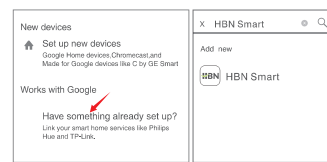


-25-

After that, you will see the smart plug at the home page of Google Home as “Linked to you”, but you still haven't set the device name and assign a home or a room for it.



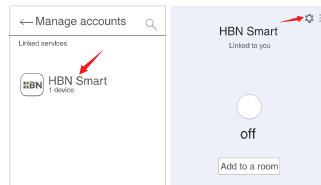
-26-



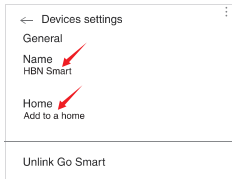
Now click the device that “Linked to you” or open “Works with Google” again to manage your linked devices, follow the steps below and set up the device

-27-

names, rooms and home for the smart plug, you won't be able to voice control it before you complete that.



-28-



-29-

## ▶ Trouble Shooting

Q: Why did my phone connection fail?  
A: \* You should try both Easy Mode and AP Mode, read page 5-page 14, make sure to follow the guide and try again.

\* Confirm your home Wi-Fi is 2.4GHz and that you've entered the correct password during the connection.

\* Remove&Install the smart plug to start again.

Contact the customer support team for assistance if you still have problems with the connection after following the steps above.

Q: Why can't I voice control the plug with my Alexa/Google

A: \* Make sure the smart plug is connected successfully on the HBN Smart app. Ensure that they are working

-30-

well by testing to see if you can turn the plug on and off through the app.

\* Make sure the same account is linked on the HBN Smart as a skill on Alexa/Google App.

\* Make sure your Alexa/Google device is working fine.

\* Check the device names that you set for this smart plug, it should be non-repetitive and recognizable for voice assistant. Also, please make sure your native language is available for Alexa.

If you still having trouble controlling our smart plug through voice control after

-31-

following all instructions, do not hesitate to contact us for help.

Q: Do I need to set up the device again if I changed my router?

A: Yes, you must set up the smart plug again if there are any changes to the current wifi status. (i.e changing the name of the wifi, changing the router/modem). There is no need to set the device up again if you are just changing the placement of the router in the same house.

Q: Why does it turns on/off or comes offline surprisingly ?

-32-

A: Make sure your connection to the wifi is not interrupted. Check to see if there were any timers/schedules set for the plug. If everything looks fine, reset the plug and install it again on the app. Email us at support@bn-link.com if the problem still persists.

## ▶ Safety Information

This device is for outdoor and indoor use. Please keep the device dry and away from hot, humid, and/or other extreme environments. Please ensure that the appliance used with our plug is in compliance with our

-33-

product's rating. Do not attempt to disassemble the device. Be aware of the safety risks and product damage done to the plug. This device meets UL94 V-0 flammability standard.

## ▶ Warranty

30 days money-back guarantee: If you're not satisfied with this purchase, you can choose to refund this order within 30 days.  
15 months warranty:  
\* The device was used in proper technical working condition.

-34-

\* Failures and defects not from human errors  
Risk of Damage: Not suitable for appliances that exceed 15A, be careful. Not covered if the device was found to be disassembled from use.

## ▶ Contact Us

Friendly reminder: Using a different app from HBN Smart may lead to differences in the interface, but the functionality of the plug should still be the same.

-35-

For any questions or concerns about our products, please contact us at support@bn-link.com

CENTURY PRODUCTS INC.  
Customer Service Assistance:  
1.909.592.1881  
Email: support@bn-link.com  
Web: www.bn-link.com  
Hours: 9AM - 5PM PST, Mon - Fri  
Designed in California, Made in China

-36-