



DS18[®]

JK-SQBASSHARNESS USER MANUAL



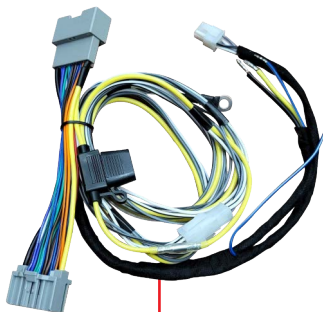
JK-SQBASSHARNESS

FOR JEEP:   SERIES

ITEM INCLUDED:



SQBASS Brackets



Wiring Harness



X-4, M5x16mm screws, and nuts



X-4, 2x8mm screws

TOOLS REQUIRED:

- A. Pin Remover
- B. #2 Philips Screwdriver
- C. ¼ Drill Bit
- D. 7mm Socket
- E. 10mm Socket
- F. 18mm Socket
- G. T27 Socket
- H. T40 Socket
- I. Impact wrench



EQUIPMENT YOU WILL NEED

(Not included in the kit)

- SQBASS (Active subwoofer)



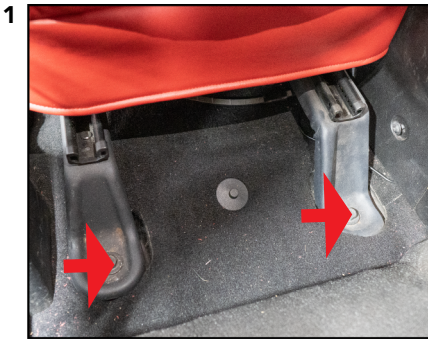
⚠ ATTENTION

Installation of mobile audio and video components requires experience with a variety of mechanical and electrical procedures. Although this manual provides general installation and operation instructions, it does not show the exact installation methods for your vehicle. If you do not have the required knowledge and experience to successfully complete the installation, consult an authorized dealer about professional installation service.

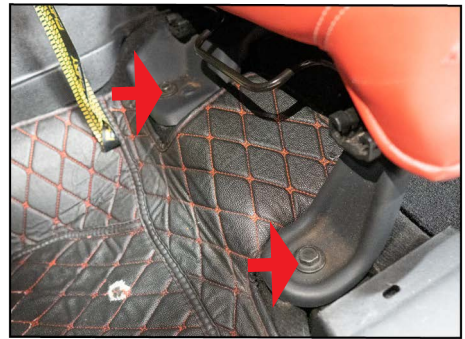
⚠ ATTENTION

Disconnect the negative post (Ground) of the battery before you start the installation. This helps avoid airbags coding and malfunctions, codes module malfunction or any electrical issues

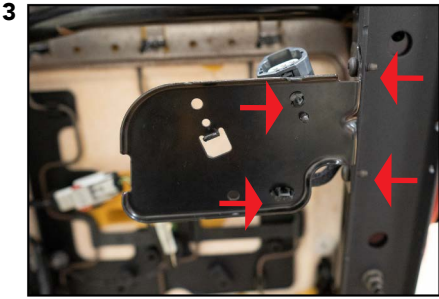
UNDER SEAT SQBASS RACK/BRACKET INSTALLATION



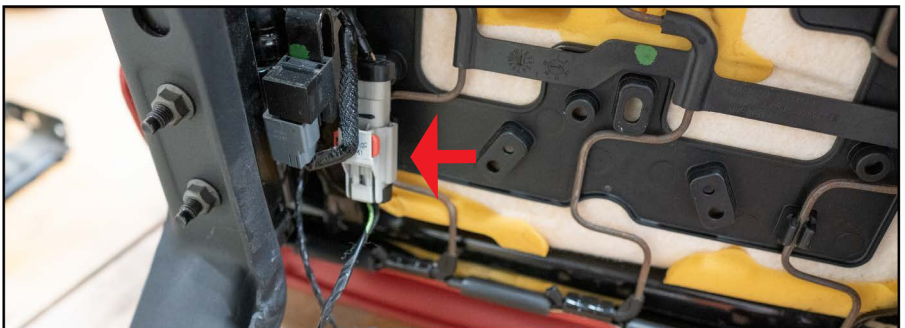
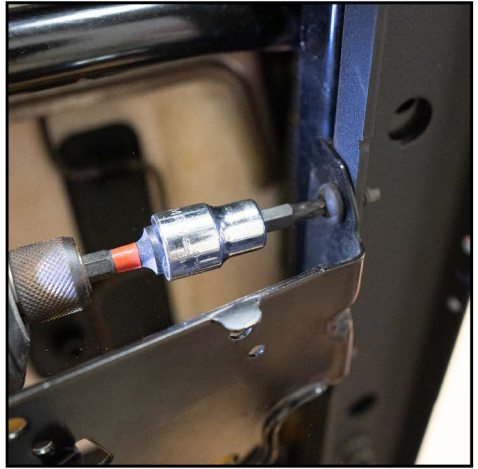
Starts with removing the bolts of the Driver seat using the 18mm socket with an impact wrench tool.



Remove the belt screw from the seat using a T40 socket, then you can remove the seat from the Jeep and put it on this position for easy access under the seat.

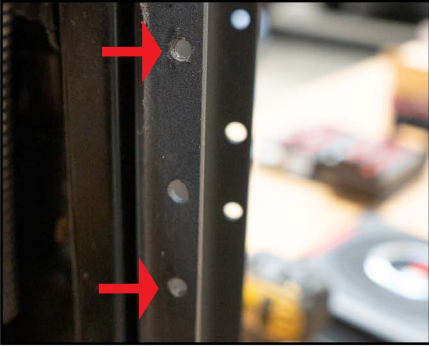


Locate the connector holder plate and remove it using the clip remover for the connector and the T27 socket for the two screws that hold it.



Relocate this wiring under the seat to one side using the same pin spots as you can see in the picture.

5



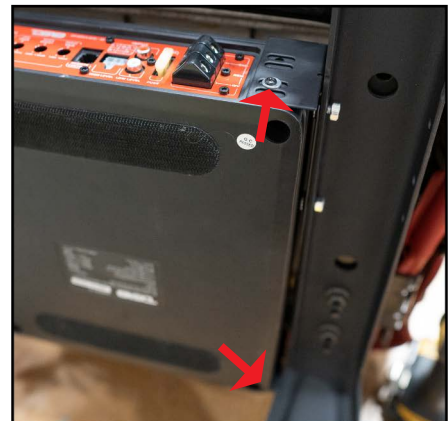
Using the 1/4 Drill Bit open up this two holes where the factory bolts was located, then locate the SQ-BASS bracket "B" and secure it using a pair of the "A" Screws with the 10mm socket.

6



Locate the SQ-BASS bracket "A" and secure it on the SQ-BASS using the "B" screws supplied and tight them just enough but not too hard (Screw can break easy).

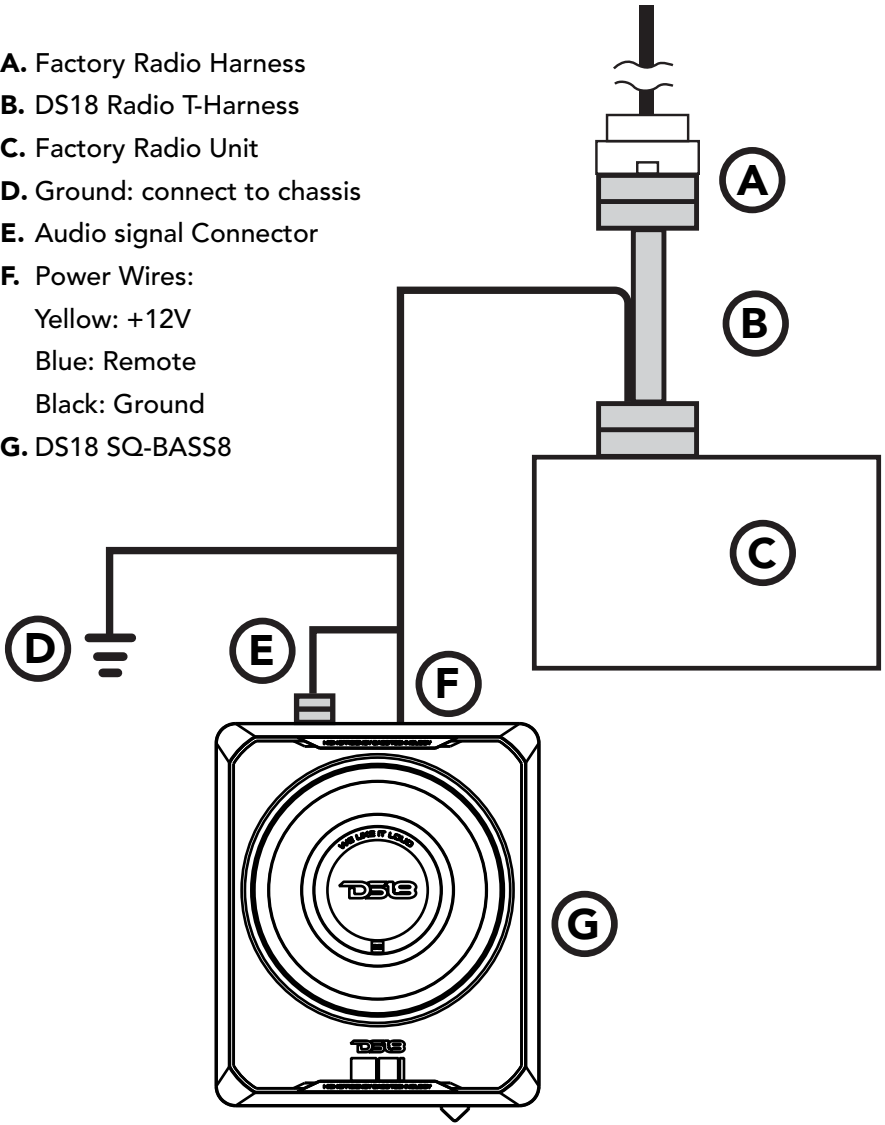
7



Locate the SQ-BASS under the seat and use a pair of "A" screws and secure the bracket using the 10mm socket, then using the "B" screws secure the other side of the SQ-BASS to the bracket "B" as you can see in the picture.

8 Now it's time to connect all wires for the SQ-BASS, then get ready to put back the seat into the Jeep and route the rest of the wiring to the dashboard (behind the radio):

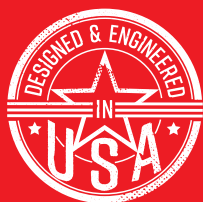
- A. Factory Radio Harness
- B. DS18 Radio T-Harness
- C. Factory Radio Unit
- D. Ground: connect to chassis
- E. Audio signal Connector
- F. Power Wires:
 - Yellow: +12V
 - Blue: Remote
 - Black: Ground
- G. DS18 SQ-BASS8



FINAL STEPS:

1. Once all is connected, put back the seat and make sure all connectors are plugged-in so you can re-connect the negative post (Ground) of the battery.
2. Turn on the Radio and check sound making sure that all speakers are playing, then adjust the amplifier's gain and crossover point to your preference.
3. This should be all! Enjoy your new DS18 JK-SQBASSHARNES.





FOR MORE INFORMATION
PLEASE VISIT
DS18.COM

WE LIKE IT LOUD

The DS18 logo, featuring the letters "DS18" in a bold, stylized, sans-serif font. The "1" is a vertical bar. A registered trademark symbol (®) is located to the upper right of the "8".

DS18[®]