

HANDLEBAR-MOUNT SPEAKER

Amplified Handlebar-mount speaker for motorcycles With Bluetooth

RYDERBT
2.5" / 120W / 4-OHM



AMPLIFIERS

X1, X2 and X4-Channel Ultra Compact Class D Amplifier

X1
CLASS D / 300W / 1-OHM



X2
CLASS D / 2 X 140W / 4-OHM



X4
CLASS D / 4 X 70W / 4-OHM



DIGITAL SIGNAL PROCESSORS

DSP2.6DBT
2-CHANNEL IN AND 6-CHANNEL OUT DIGITAL SOUND PROCESSOR (DSP) WITH BLUETOOTH AND LCD SCREEN



DSP2.8DBT
2-CHANNEL IN AND 8-CHANNEL OUT DIGITAL SOUND PROCESSOR (DSP) WITH BLUETOOTH AND LCD SCREEN



DSP4.8BTM
4-CHANNEL IN AND 8-CHANNEL OUT DIGITAL SOUND PROCESSOR (DSP) WITH BLUETOOTH



DSP8.8BT
8-CHANNEL IN AND 8-CHANNEL OUT DIGITAL SOUND PROCESSOR (DSP) WITH BLUETOOTH



FOR ALL ELEMENTS

BLUETOOTH MODULES

BT-TWO
BLUETOOTH STREAMING AUDIO RECEIVER (WORKS WITH ANDROID AND IPHONE)



LED-BTC 
RGB LED LIGHTS BLUETOOTH CONTROL (WORKS WITH ANDROID AND IPHONE)



LED-BTCDRM 
RGB LED DREAM DIGITAL LIGHTS CHASING BLUETOOTH CONTROL (WORKS WITH ANDROID AND IPHONE)



INSTALLATION KITS

Motorcycle OFC 100% Copper Installation Kits for Harley Davidson

RY-KITO. HD
RYDER 0-GA AMPLIFIER
RY-KIT4. HD
RYDER 4-GA AMPLIFIER
RY-KIT8. HD
RYDER 8-GA AMPLIFIER



RY-HARNES. HD
PLUG AND PLAY HARNESS FOR HARLEY



FOR WARRANTY AND SERVICE
CALL US: 954.924.1213
1400 NW 159th ST, Suite 101
Miami Gardens, FL 33169

#WELIKEITLOUD

Instagram Facebook YouTube Twitter LinkedIn

DS18

SCAN THE QR CODE TO VISIT THE WEBSITE



DESIGNED & ENGINEERED IN USA
DS18.COM

SUBWOOFERS

IXS Shallow-Mount Fiber Glass Subwoofer

IXS10.4S
10" / 600W / 4-OHM

IXS10.4D
10" / 600W / 4-OHM

IXS10.2D
10" / 600W / 2-OHM

IXS12.4S
12" / 800W / 4-OHM

IXS12.4D
12" / 800W / 4-OHM

IXS12.2D
12" / 800W / 2-OHM



PS Shallow-Mount Water Resistant Subwoofer

PSW10.4D
10" / 500W / 4-OHM

PSW10.4D
10" / 500W / 4-OHM

PSW10.2D
10" / 500W / 2-OHM

PSW12.4S
12" / 600W / 4-OHM

PSW12.4D
12" / 600W / 4-OHM

PSW12.2D
12" / 600W / 2-OHM



SRW Shallow-Mount Subwoofer

SRW8.4
8" / 150W / 4-OHM

SRW8.4D
8" / 150W / 4-OHM

SRW10.4
10" / 200W / 4-OHM

SRW10.4D
10" / 200W / 4-OHM

SRW12.4
12" / 220W / 4-OHM

SRW12.4D
12" / 220W / 4-OHM

TWEETERS



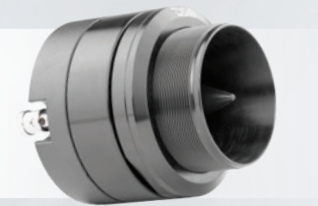
PRO-TW820

2.3" HIGH COMPRESSION NEODYMIUM SUPER BULLET TWEETER / 100W / 1.4" ALUMINUM VC / 4-OHM



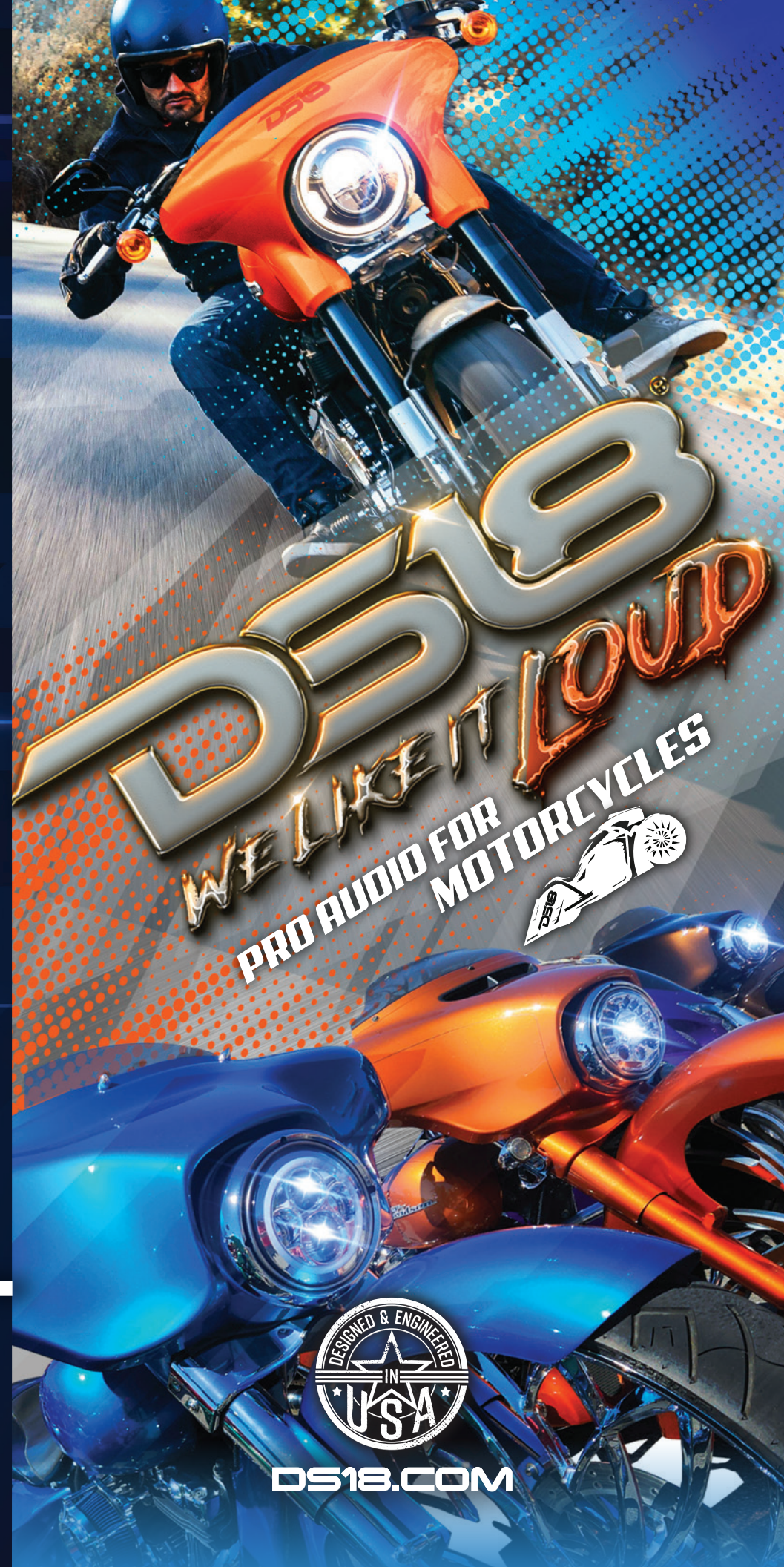
PRO-TW920

2.7" HIGH COMPRESSION NEODYMIUM SUPER BULLET TWEETER / 160W / 1.4" TITANIUM VC / 4-OHM



PRO-TW720L

1.6" SHALLOW HIGH COMPRESSION NEODYMIUM SUPER BULLET TWEETER / 140W / 1" POLYETHER ETHER KETONE VC / 4-OHM WITH RGB LED LIGHTS



DS18

WE LIKE IT LOUD

PRO AUDIO FOR MOTORCYCLES

FULL-RANGE SPEAKERS

PRO-NEO Water resistant Full-Range Loudspeaker

- PRO-M6.2NEO**
6.5" / 200W / 2-0HM
- PRO-M8.2NEO**
8" / 250W / 2-0HM



PRO-NEO Full-Range Loudspeakers

- PRO-FR5NEO**
5.25" / 200W / 4-0HM
- PRO-FR6NEO**
6.25" / 225W / 4-0HM
- PRO-FR8NEO**
8" / 250W / 4-0HM



- PRO-FR69NEO**
6X9" / 250W / 4-0HM



Neodymium Ultra Slim Full-Range Loudspeakers

- PRO-NS6**
6.5" / 150W / 8-0HM
- PRO-NS6.4**
6.5" / 150W / 4-0HM
- PRO-NS8**
8" / 200W / 8-0HM
- PRO-NS8.4**
8" / 200W / 4-0HM



MID-RANGE SPEAKERS

PRO Shallow Water resistant Mid-Range Loudspeaker

- PRO-SM6.2**
6.5" / 200W / 2-0HM
- PRO-SM8.2**
8" / 250W / 2-0HM



- PRO-SM69.2**
6X9" / 250W / 2-0HM



MID-BASS SPEAKERS

Neodymium Mid-Bass Loudspeaker

- PRO-XLNE010MB**
10" / 1000W / 8-0HM
- PRO-XLNE012MB**
12" / 1000W / 8-0HM



PRO-NEO Mid-Range and Mid-Bass Loudspeakers

- 6XL650N-4**
6" / 325W / 4-0HM
- 6XL650N-8**
8" / 325W / 8-0HM



- PRO-NE08R**
8" / 400W / 4-0HM



- PRO-NE010R**
10" / 500W / 4-0HM



- PRO-NE06**
6.5" / 250W / 4-0HM

- PRO-NE08**
8" / 300W / 4-0HM

PRO-NEO Carbon Fiber Water resistant Cone Mid-Bass Loudspeaker

- PRO-CF6.2NR**
6.5" / 250W / 2-0HM
- PRO-CF6.4NR**
6.5" / 250W / 4-0HM
- PRO-CF8.2NR**
8" / 300W / 2-0HM



- PRO-CF69.2NR**
6X9" / 300W / 2-0HM
- PRO-CF69.4NR**
6X9" / 300W / 4-0HM



PRO-NEO Carbon Fiber Water resistant Cone Mid-Bass Loudspeaker

- PRO-CF6.4SL**
6.5" / 250W / 4-0HM
- PRO-CF6.8SL**
8" / 275W / 4-0HM



COAXIAL SPEAKERS

Shallow Coaxial Hybrid Mid-Range Loudspeaker with Built-in Driver

- PRO-HY6MSL**
6.5" / 150W / 8-0HM
- PRO-HY6.4MSL**
6.5" / 150W / 4-0HM
- PRO-HY8.4MSL**
8" / 200W / 4-0HM



Coaxial Mid-Range Loudspeaker with Water Resistant Cone Built-in Bullet Tweeter and Grill

- PRO-ZT6**
6.5" / 225W / 4-0HM
- PRO-ZT8**
8" / 275W / 4-0HM
- PRO-ZT69**
6.5" / 275W / 4-0HM



Neodymium Coaxial Hybrid Mid-Bass Water resistant Carbon Fiber Cone Loudspeaker with Built-in Driver

- 8HD800NCFD-4**
8" / 400W / 4-0HM
- 8HD800NCFD-8**
8" / 400W / 8-0HM



PRO Coaxial Hybrid Mid-Range Water resistant Cone Loudspeaker with Built-in Driver

- PRO-HY6.4B**
6.5" / 225W / 4-0HM
- PRO-HY8.4B**
8" / 250W / 4-0HM
- PRO-HY69.4B**
6X9" / 225W / 4-0HM
- PRO-HY10.4B**
10" / 225W / 4-0HM



WOOFERS

PRO Water Resistant Woofer

- PRO-W10.2S**
10" / 350W / 2-0HM
- PRO-W10.4S**
10" / 350W / 4-0HM



PRO-NEO Water resistant Carbon Fiber Cone Mid-Bass Woofer

- PRO-RY8.4NMB**
8" / 250W / 4-0HM
- PRO-RY10.4NMB**
10" / 450W / 4-0HM



PRO-NEO Water Resistant Woofer

- PRO-W10.2SNEO**
10" / 400W / 2-0HM
- PRO-W10.4SNEO**
10" / 400W / 4-0HM

