



Natural rainwater for your home and garden

F-Line rainwater harvesting from Rewatec



Simple and free: water as nature intended

Water shouldn't be complicated.

And yet it is. Mains water rates are set to continue to rise as water companies struggle to keep up with the demands of a growing population. The Royal Horticultural Society suggests that up to 70% of water demand during peak times is used on gardens. Depleting ground and stream water can have serious environmental consequences, and with the threat of Summer droughts a simple thing like turning on your hose to water your garden might become a luxury consigned to the past. Harvesting rainwater can reduce mains water consumption by up to 50%.

Rainwater harvesting offers a great alternative to mains water and the benefits are clear:

- Protection against rising water rates
- Water shortages are not an issue
- No hosepipe ban with a plentiful supply of clean fresh water for your garden
- Less limescale means appliances last longer
- No added fluoride or chlorine
- Naturally softer water reduces the detergent required
- Capturing run-off reduces local flooding
- Rainwater is the ideal pH for plants, even acid loving species
- No harsh hard water elements or artificial water softening chemicals





F-Line: easy, tough and safe



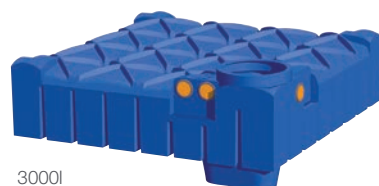
The F-Line tank is the original flat rainwater harvesting tank. Manufactured in Germany to stringent specification from tough polyethylene, it carries a market leading 25 year warranty.

It is easy to install and fit, stress tested to 10 tonnes, and comes with added safety features to ensure easy cleaning and childproofing.

Available in six standard sizes from 1500 to 15000 litres, you can scale the system to meet your household requirements.



1500l



3000l



5000l



7500l

Easy Installation

Our customers' most popular feature: the easy installation. The F-Line requires an excavation depth starting from only 100cm, and with its shallow depth requires 75% less total excavation than traditional cylindrical containers.



Six easy steps to installation – without heavy machinery



Excavate
Depth of only 100cm required.



Place
Lightweight tank is easily placed in the narrow and shallow pit.



Connect
Attach pump and connect components.



Backfill
After assembling the components, simply backfill the pit, very little workspace required.



Cover
Re-seed or re-turf to leave garden looking like new.



Use
Useable with only 30l (for the 1500l model) you can make use of your fresh rainwater straight away. Cover shown above is an upgrade to standard.



With an optional driveable cover, the F-Line can now be located within driveways, ensuring minimum disruption to your garden. And it's easy to maintain and service too. The pump is easily accessible and stands above only a shallow depth of water. The filter can be removed for easy cleaning once a year.

75% less excavation

Tough quality that you can trust

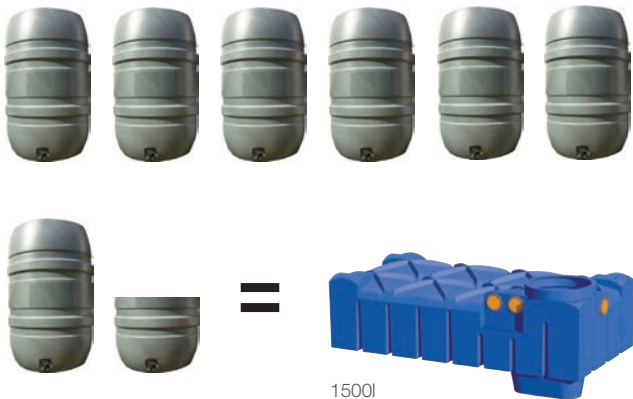
Made from high performance polyethylene, the F-Line is manufactured to German specifications, where we easily lead the way in innovation in rainwater harvesting. Moulded as one continuous, robust, piece the F-line won't crack or split under pressure - unlike some fibreglass models on the market. You won't require cement to fix the F-Line in place, the strength and design of the structure ensures that it won't move, even in areas with a high water table. This feature saves you money on concreting and structural engineer charges.

Safety as standard

Covers contain anti-frost technology and come complete with child-proof locks.



You also have the additional benefit of choosing a driveable cover. Perfect for placement in driveways or under gravel, you can be sure that although your garden will benefit from a plentiful supply of fresh rainwater, your landscaping and design won't suffer. And as the tanks are stress tested to 10 tonnes you can be sure that there will be no damage made to the tank.



Images shown above are not to scale.

Each 1500l F-Line rainwater harvesting tank is the equivalent of 7 1/2 200l water butts.

Unlike traditional water butts, the F-Line saves space, stops smells and stagnation, and doesn't attract insects.



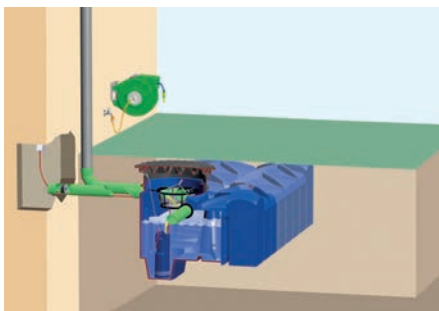
Rainwater Harvesting Kits

Everything you need to start collecting and using rainwater



Garden System

F-Line Basic



Perfect for:

- Large and small gardens
- Controlling localised flooding
- Storing and providing water for large acreage
- Allotments and areas without electricity (using a hand pump system)
- Cleaning Cars

What's included?

1) F-Line tank.



2) Pluggable filter basket, fitted on the inflow pipe in the tank.



3) Submersible BlueRain pressure pump with: integrated automatic start and stop (pressure controller), three-stage high efficiency rotary pump, dry run protection. Maximum pumping height of 36m, maximum pumping capacity 5.7m³/h, motor output 900W.



4) Shaft extension VS20, height 25cm, diameter 60cm.



5) Double walled polyethylene TopCover (walk on version).



Tank Capacity	Order Number
F-Line Basic 1500 litre	RWEF1512
F-Line Basic 3000 litre	RWEF3012
F-Line Basic 5000 litre	RWEF5012
F-Line Basic 7500 litre	RWEF7512

Upgrades

Driveable Cover

Driveable covers available in replacement for items 4) and 5).

Order Number: RWUP0001



Twin Cover

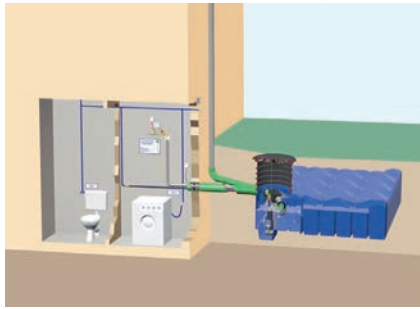
Doubled walled cover with integrated water distribution points for plug and spray functionality.

Order Number: RWEZ7000



Home and Garden System

F-Line Diver

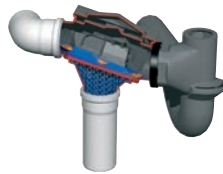


Perfect for:

- New home builds
- Providing water for washing machines, toilets, watering the garden and cleaning cars
- BREEAM certification
- Controlling localised flooding
- Swimming pool top ups

What's included?

1) F-Line tank.



2) Integrated McClean fine filter, complete with overflow siphon and calmed inlet.



3) Submersible, high performance, DIVER pressure pump with: integrated automatic start and stop (pressure controller) and dry run protection. Maximum pumping height of 45m, maximum pumping capacity 5.7m³/h, motor output 1200W.



4) Automatic mains water top up kit (to send mains water to the tank in the event that the tank runs dry). WRAS approved product 1306031.



5) Security package including labels according to BS8515.



6) Shaft extension VS60, height 63.5cm, diameter 60cm.



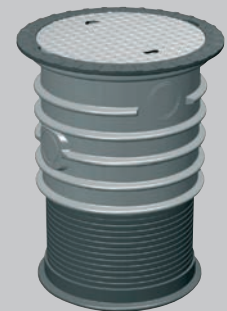
7) Double walled polyethylene TopCover (walk on version).

Additional Upgrades and Accessories

Driveable Cover

Driveable covers available in replacement for items 6 and 7.

Order Number: RWUP0002



Connection Pipe

25m x 25mm MDPE pressure pipe green/black - additional fittings to be provided by installer.

Order Number: RWEZ0001

Tank Capacity	Order Number
F-Line Diver 1500 litre	RWEF1515
F-Line Diver 3000 litre	RWEF3015
F-Line Diver 5000 litre	RWEF5015
F-Line Diver 7500 litre	RWEF7515

Technical details and specifications

Tank size (litres)	Length (mm)	Width (mm)	Height at tank shoulder (mm)	Height including entrance shaft (mm)	Height of pump basin (mm)	Weight (kg)	Inflow (mm) ²	Outflow (mm) ²
1500	2400	1200	650	880	100	80	250	305
3000	2400	2400	650	880	100	160	250	305
5000	2960	2220	920	1215	100	250	250	305
7500	3340	2310	1125	1260	No pump basin	310	250	305
10000 ¹	5920	2220	920	1215	No pump basin	500	250	305
15000	6680	2310	1125	1285	No pump basin	620	250	305

- 1) The 10000l is black in colour, all other systems are blue.
- 2) Top edge entrance shaft to pipe base.

Order details for F-Line tank only

Only want the tank?

Tank size (litres)	Order Number
1500	RWFT1500
3000	RWFT3000
5000	RWFT5000
7500	RWFT7500
10000	RWFT10000
15000	RWFT15000

Start benefiting from rainwater harvesting today

Call us on 022 51411

or email us at ptairl-sales@premiertech.com for free advice on all F-Line products or to place an order today.

Did you know that the F-Line is also suitable for large public and commercial installation?

Cost effective, easy to store and fully connectable, the F-Line is an attractive alternative to the larger tank system. Call us for further information and a free site survey.

Warranty: The correct installation of the underground tanks according to installation instructions is the basis for the decades of lifespan expected from your F-Line storage tank and 25 year work warranty. This warranty refers exclusively to the underground tank and not to the individual parts and accessories, even if these are included in the package price. For all measurements and tables of contents we reserve ourselves a tolerance of +/- 3%. In the case of a defect approved by us we accomplish material compensation free of charge – benefits beyond this are excluded. Excluded by all warranties are the damages which are caused by improper use, defective assembly or servicing.

Cargo: Freight – terms of delivery quoted by our local partners.

Prices: Prices valid at time of printing, exclude works. Technical changes or mistakes are reserved.

© Premier Tech Ltd.

