

STRAIN NAME: N/A
Matrix: Tincture 1000

Blue Moon Hemp
3100 NW 2nd Ave, Boca Raton,
FL 33431




SAMPLE: D803030-09

Harvest/Lot ID: 18636

Batch#: 18636; Batch Size: N/A Ordered:
03/22/2018; Sampled: N/A Completed:
03/26/2018; Expires: 03/26/2019

Sampling Method: Client Method



Pesticides - NT
Microbials - NT
Mycotoxins - NT
Heavy Metals - NT
Terpenes - NT
Residual Solvents - NT
Filtch - NT
Water Activity - NT
Moisture - NT

Cannabinoids

Analyte	Weight (%)	mg/g	RPD%
THCa	<LOQ	<LOQ	
D9-THC	<LOQ	<LOQ	
D8-THC	<LOQ	<LOQ	
THCV	<LOQ	<LOQ	
THCVa	<LOQ	<LOQ	
TOTAL THC	<LOQ	<LOQ	
CBDa	<LOQ	<LOQ	
CBD	3.33	33.34	
CBDV	<LOQ	<LOQ	
CBDVa	<LOQ	<LOQ	
TOTAL CBD	3.33	33.34	
CBN	<LOQ	<LOQ	
CBG	<LOQ	<LOQ	
CBC	<LOQ	<LOQ	
TOTAL CANNABINOIDS	3.33	33.34	

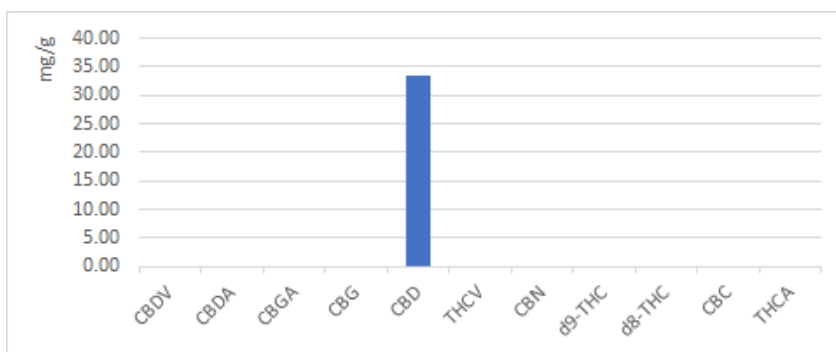
Cannabinoids

0.00%
Total THC

3.33%
Total CBD

Total THC= THCa x 0.877 + d9-THC

Total CBD= CBDa x 0.877 + CBD





STRAIN NAME: N/A
Matrix: Tincture 1000

Blue Moon Hemp
3100 NW 2nd Ave, Boca Raton,
FL 33431



SAMPLE: D803030-09

Harvest/Lot ID: 18636

Batch#: 18636; Batch Size: N/A Ordered:
03/22/2018; Sampled: N/A Completed:
03/26/2018; Expires: 03/26/2019

Sampling Method: Client Method

Cannabinoid Profile Test Results - Analysis Method: SOP.T.30.050, SOP.T.40.020
Full spectrum cannabinoid analysis utilizing High Performance Liquid Chromatography with UV detection (HPLC-UV). (Method: SOP.T.30.050 for sample prep and Shimadzu High Sensitivity Method SOP.T.40.020 for analysis. LOQ for all cannabinoids is 1 mg/L). D9-THC, THCA, CBD, CBDA are State accredited analytes, the rest are "info only."



EVIO LABS

4131 SW 47th Ave, Ste. 1408
954.368.7664
info@eviolabsfl.com

Jorge Segredo
Lab Director

State License # N/A
ISO Accreditation # 97164