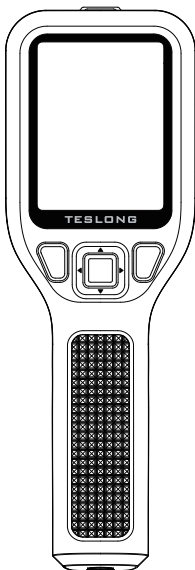


TESLONG

Handheld Thermal Camera User Manual



Model: TTM Series

Contents

Safety Instructions	1-3
Regulatory Information	4
Introduction	5
Specifications	6
What's in the Box?	7
Product Overview (TTM260)	8
Product Overview (TTM120S)	9
Button Overview	10
Basic Operations	11
1. Charging the Device	11
2. Power On/Off the Device	11
3. Temperature Measurement	11
4. Capture Photos and Videos	12
5. View Photos and Videos	12
6. Transfer Files	12
Operational Interface	13-16
Infrared Analysis Software Instructions	17
Appendix	18

Safety Instructions

These instructions are intended to ensure that user can use the product correctly to avoid danger or property loss.

Please read all instructions before use.

Laws and Regulations

- Use of the product must be in strict compliance with local safety regulations.

Operation

- Do not point the thermal imaging camera at the sun or other strong energy sources. Doing so may cause damage to the thermal imaging detector.
- The instrument's IP54 rating is only in affect when the top flap (covering the USB-C and thermocouple jacks) is completely sealed. Do not operate the instrument with the flap open, except for charging, or interfacing with a PC.
- Do not use the laser near explosive gases or in other potentially explosive areas.
- Do not touch the lens with your hands. Do not knock, pry, puncture, or scratch the lens.
- Do not disassemble the thermal imaging camera.

Transportation

- Keep the device in its original or similar packaging while transporting it.
- Keep all packaging after unpacking for future use. In case of warranty return, you need to return the device in its original packaging.

Transportation without the original packaging may result in damage to the device and the company shall not take any responsibilities.

- Do not drop the product or subject it to physical shock. Keep the device away from magnetic interference

Battery

- The built-in battery cannot be removed. Please contact the manufacturer for repair if necessary.
- For long-term storage of the battery, make sure it is fully charged every half year to ensure the battery quality; otherwise, damage may occur.
- Make sure the plug is properly connected to the power socket.
- In the first use, power on the device and charge the battery with the lithium battery for more than 8 hours.
- The standard adapter power supply is 5V.

Maintenance

- If the product does not work properly, please contact Teslong customer service. We do not assume any responsibility for problems caused by unauthorized repair or maintenance.
- Wipe the device gently with a clean cloth and a small quantity of rubbing alcohol, if necessary.
- If the equipment is used in a manner not specified by the manufacturer, the protection provided by the device may be impaired.

Laser Warning

⚠ Warning: The laser radiation emitted from the device can cause eye injuries, burning of skin or inflammable substances. Prevent eyes from viewing the laser directly.

The laser meets the IEC60825–1:2014 standard.

Laser maintenance: It is not necessary to maintain the laser regularly. If the laser does not work, the laser assembly needs to be replaced in the factory under warranty.



Regulatory Information

FCC Information

Please note that changes or modification not expressly approved by the party responsible for compliance could void the user's authority to operate the equipment.

FCC Compliance:

This equipment has been tested and found to comply with the limits for a Class B digital device, pursuant to Part 15 of the FCC Rules. These limits are designed to provide reasonable protection against harmful interference in a residential installation. This equipment generates, uses and can radiate radio frequency energy, if it is not installed and used in accordance with the instructions, it may cause harmful interference to radio communications; however, there is no guarantee that interference will not occur in a particular installation. If this equipment does cause harmful interference to radio or television reception, which can be determined by turning the equipment off and on, the user is encouraged to try to correct the interference by one or more of the following measures:

- Reorient or relocate the receiving antenna.
- Increase the separation between the equipment and receiver.
- Connect the equipment into an outlet on a circuit different from that to which the receiver is connected.
- Consult the dealer or an experienced radio/TV technician for help.

FCC Conditions

This device complies with Part 15 of the FCC Rules. Operation is subject to the following two conditions:

1. This device may not cause harmful interference.
2. This device must accept any interference received, including interference that may cause undesired operation.

Introduction

The Teslong TTM120S and 260 are essential tools for professionals and enthusiasts alike, combining advanced thermal imaging technology with user-friendly design to deliver precise temperature measurements and detailed thermal images. Whether you're conducting equipment inspections, troubleshooting issues, or performing preventive maintenance tasks, our thermal cameras offer unmatched versatility and performance to meet your diverse needs.

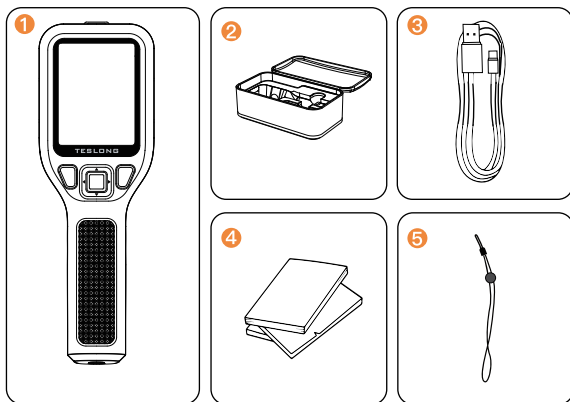
Features

- LED work light
- Easy-to-read 240x320 3.2" TFT color LCD display
- 8 color palettes
- 5 imaging modes (only TTM260)
- 8GB internal memory for storing captured images
- USB-C connectivity for photo/video transfer and charging
- IP54 enclosure (with top flap closed) protects from dirt, dust, and water
- Rechargeable lithium battery with auto power off (APO)
User adjustable
- Intuitive programming menu system translated into more than ten languages

Specifications

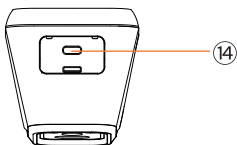
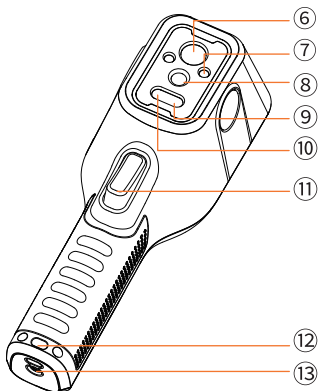
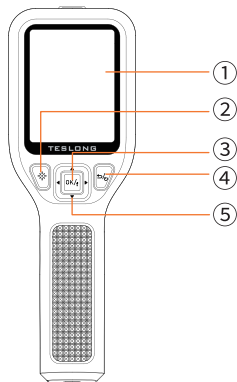
Model	TTM120S	TTM260
IR Resolution	120*90	256*192
Field of View (FOV)	38°–50°	42°–56°
Pixel Size	17um	12um
Spectral Range	8~14um	
Thermal Sensitivity/NETD	< 60mk	< 50mk
Image Frequency	25Hz	
Temp. Measurement Range	-4°F to 752°F (-20°C to 400°C)	
Temp. Measurement Accuracy	±2°C or ± 2% of reading	
Visible Camera Megapixel		720p
Visible Camera FOV		55°–83°
LED Flashlight	2 LED flashlights	
Laser Class	Class II	
Laser Measurement Range		1–40 meters
Temp. Display		Center Point Temperature Max. Temperature Tracking (Hot) Min. Temperature Tracking (Cold)
Color Palette		Iron/White Hot/Black Hot/Rainbow/Hottest/High Contrast/Glimmer/Lava
Image Mode		Thermal/Visible/ Outline Fusion/ Overlay Fusion/PIP/ Fusion ADJ./Offset ADJ.
Infrared effect		
Screen Type	3.2-inch TFT LCD Screen	
Screen Resolution	240*320	
Battery Capacity	2600mAh rechargeable battery	
Storage Capacity	8GB	
USB Port	USB Type-C	
Waterproof Rating	IP54	

What's in the Box?



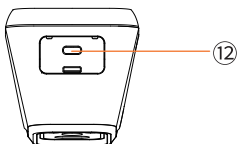
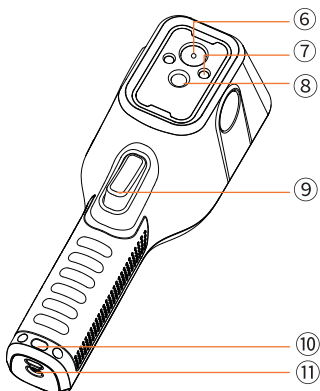
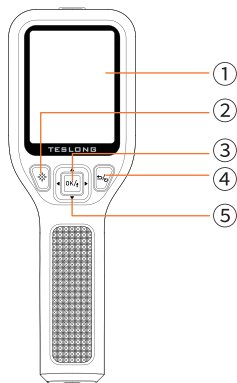
1. Thermal Imaging Camera
2. Storage bag (Only TTM260)
3. USB Cable (Type-A to Type-C)
4. User Manual & Safety Warning Manual
5. Wrist Strap

Product Overview (TTM260)










- ① 3.2-inch Screen
- ② Laser Pointer Button
- ③ OK/Menu/Flashlight Button
- ④ Back/Power Button
- ⑤ Navigation Button
- ⑥ Visible Spectrum Camera
- ⑦ Two LED Flashlights
- ⑧ IR Camera
- ⑨ Spot Thermal Sensor
- ⑩ Laser Pointer
- ⑪ Trigger
- ⑫ Lanyard Hole
- ⑬ Tripod Screw Hole
- ⑭ USB Interface (Type-C)

Product Overview (TTM120S)



- ① 3.2-inch Screen
- ② Laser Pointer Button
- ③ OK/Menu/Flashlight Button
- ④ Back/Power Button
- ⑤ Navigation Button
- ⑥ Laser Pointer
- ⑦ Two LED Flashlights
- ⑧ IR Camera
- ⑨ Trigger
- ⑩ Lanyard Hole
- ⑪ Tripod Screw Hole
- ⑫ USB Interface(Type-C)

Button Overview

Control Button Descriptions	
	<p>Short Press: Display menu system or confirm operation</p> <p>Long Press: Turn on/off LED flashlight</p>
	<p>Short Press: Turn on the laser measurement once (only TTM260)</p> <p>Long Press: Turn on/off the continuous laser measurement (only TTM260)</p>
	<p>Short Press: Back</p> <p>Long Press: Power on/off</p>
	<p>Press to scroll upward in the menu</p> <p>Switch to Photo Mode</p>
	<p>Press to scroll downwards in the menu</p> <p>Switch to Photo Mode</p>
	<p>Press to scroll left in the menu</p> <p>Switch color palettes</p>
	<p>Press to scroll right in the menus</p> <p>Switch color palettes</p>
TRIGGER	<p>Short pull the trigger to capture photos</p> <p>Long pull the trigger to start/end a video recording</p>

Basic Operations

1. Charging the Device

1.1 Open the top cover of the camera.

1.2 Using the included USB cable, plug the USB interface into a power adaptor or other USB-A plug with power.

2. Power On/Off the Device

2.1 Long press the power button to turn on/off the device.

2.2 The camera has an Auto Power off (APO) utility that switches it off automatically if no buttons are pressed for the duration of the selected APO time. Use the menu system (under Device Settings) to set the APO timer.

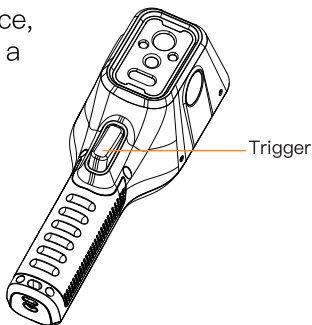
3. Temperature Measurement

3.1 Point the camera toward the test area and scan as desired.

3.2 Select and set the temperature measurement/image mode/color palette as desired. View the camera image on the display.

4. Capture Photos and Videos

4.1 In the live view interface, pull the trigger to capture a photo or video.



5. View Photos and Videos

5.1 Go to Album mode in the menu to view the photos or videos.

5.2 Scroll through the photos or videos with the arrows and view them with the OK button.

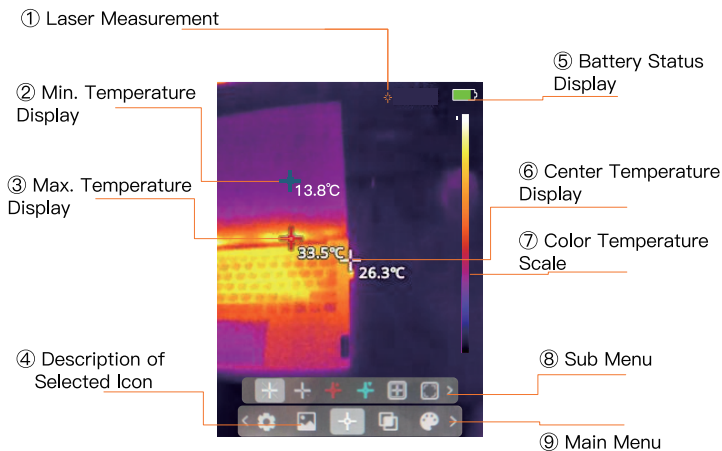
5.3 (Optional) Press the trigger button to play the video.

5.4 (Optional) Press the OK button to delete the photo while in Album mode.








6. Transfer Files

6.1 To transfer the images or videos to a PC, open the top cover of camera and connect the camera to your PC with USB cable.

Operational Interface



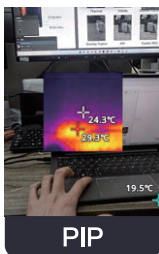
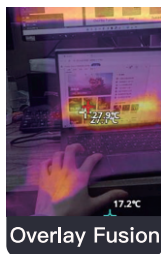
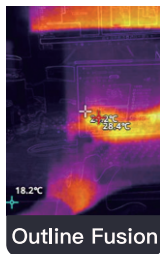
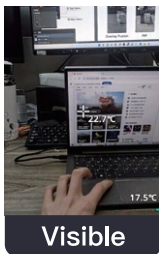
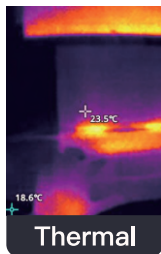
Operational Interface

Main Menu Description	
	Device Settings: Language/Emissivity/Temp. Unit/Temp. Alarm/Temp. Compensation/Storage/More
	Album: Photo/Video Playback
	Measurement: Cancel Measurements/Center Spot/Hot Spot/Cold Spot/Zone/Edit Zone
	Photo Mode: Thermal/Visible/Outline Fusion/Overlay Fusion/PIP/Fusion ADJ./Offset ADJ.
	Color Palette: Iron/White Hot/Black Hot/Rainbow/Hottest/High Contrast/Glimmer/Lava
	LED flashlight: Turn on/off the Flashlights
	Infrared Effect, Soft/Enhanced/High Contrast

Operational Interface (Only TTM260)

Photo Mode Description

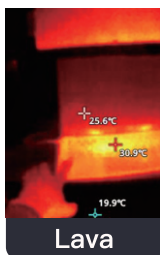
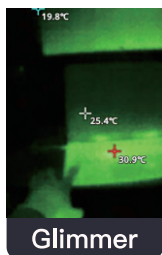
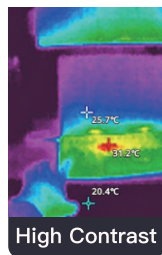
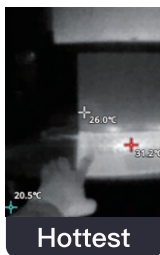
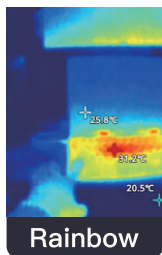
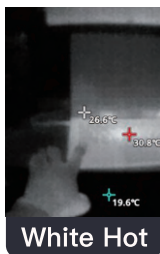
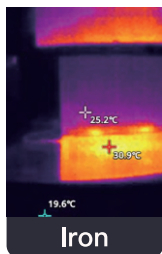
Select the photo mode as desired:



Operational Interface

Color Palette Description

Select the color Palette as desired:



Infrared Analysis Software Instructions

After capturing images with an infrared thermal imager, an analysis software can be used to analyze the temperature of the captured photos.

This software can optimize and analyze infrared and visible light comparison photos and generate professional reports.

- Supports temperature analysis of points, lines, boxes, rectangles, ellipses, and polygons.
- Allows text and arrow annotations on images.
- Supports split analysis of infrared, visible light, and fused images.
- Enables dynamic temperature range adjustment.
- Supports temperature conversion in Celsius, Fahrenheit and Kelvin.
- Capable of generating reports with different templates.

Download and use the Teslong Thermal Imaging software using the following link:

[“https://d.gto.so/TTM.zip”](https://d.gto.so/TTM.zip)



Teslong Thermal Imaging



This software is only available for Windows users.

Appendix

Material	Emissivity
Human Skin	0.98
PCB	0.91
Cement Concrete	0.95
Ceramics	0.92
Rubber	0.95
Paint	0.93
Wood	0.85
Asphalt	0.96
Brick	0.95
Sand	0.90
Soil	0.92
Cotton	0.98
Cardboard	0.90
White Paper	0.90
Water	0.96



Customer Service

Please contact us if you have any questions about your product.



12-month Limited Warranty



Lifetime Technical Support



support@teslong.com | info@teslong.com



+1 (877) 899-8809 (US)
(Mon-Fri 8:00 AM-5:00 PM PST)



www.teslong.com



@TeslongInc



©TESLONG TTM Series D1015V1.0