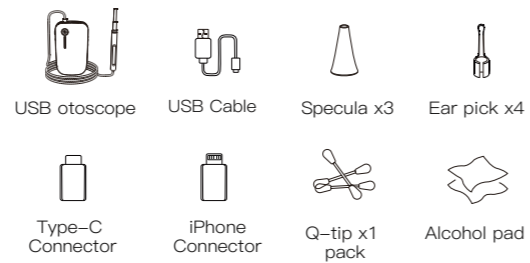


TESLONG

User Manual for NTE100i Otoscope

Packing List

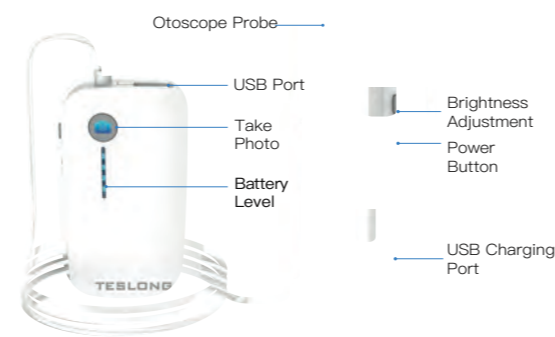


Technical Data

Description	Data
Image Sensor	CMOS
Resolution	1280x720
Focal Length	0.8-1.2in (or 2-3cm)
Camera Light Source	6 adjustable high-intensity LEDs
Operating Temperature	32° to 113° F
Battery Type	900mAh Lithium Battery
Working Time	1 hour
Charging Time	About 3 hours
Power Input	DC 5V 500mA
Certifications	CE FCC ROHS

-01-

Product Instructions



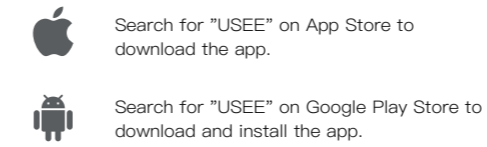
Please attach a specula to prevent the probe from hurting your ear or select a ear pick to clean the ear wax.

Disinfect the speculas and ear picks with saturated steam for 5 minutes at 212 F or wipe them with 75% alcohol solution.

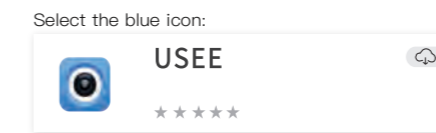


-02-

STEP 1 Download and Install the APP



Or you can download it through this link:
<http://gto.so/usee.apk>



Please scan this QR Code to get the app for iOS Android.

-03-

STEP 2

01 Press and hold the power button for a few seconds to turn on the device until the blue lights turn on.



02 Connecting the otoscope to your iPhone with the cable. (We highly recommend that you use your phone's original USB cable to connect with the app for a stronger & more stable connection.)



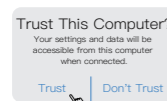
Please make sure the cable is plugged into the bottom.

-04-

STEP 3



1 Open the "USEE" APP.



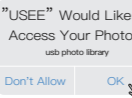
2 Click on "Trust" in the pop-up dialog to allow your iPhone to access the camera.



4 Click on "Dismiss" if you see this message.



3 Enter your iPhone passcode to activate the device.

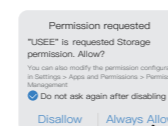


5 Please Click on "OK" to allow the app to access the album if you would like to see the image and video.

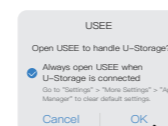
-05-



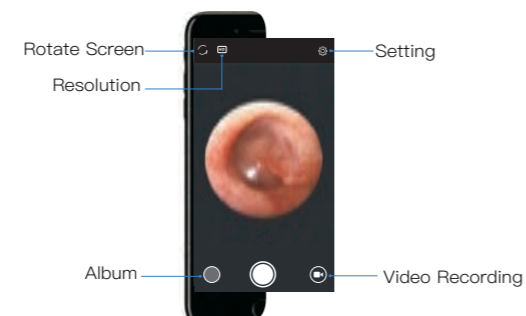
1 Open the "USEE" APP.



2 Select "Always Allow".



3 Select "OK".

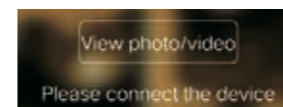


4 Then you will get a funny screen, have a great ear cleaning day!

-06-

Notices

➤ When App just keeps saying "Please connect the device". Even though there is a USB cable included in the package, we highly recommend that you use the phone's original USB cable to connect your phone for a stronger & more stable connection.



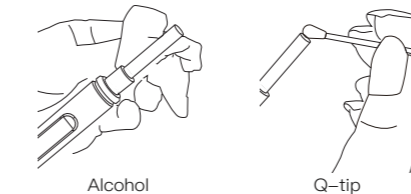
➤ If you cannot turn on the scope, or it turns off after a few minutes of working, it can be the sign of low battery. Please make sure the battery is fully charged.



Full Charge Low Battery

➤ In order to keep the image quality crystal clear and maintain the optimal result & personal hygiene, please follow up these methods:

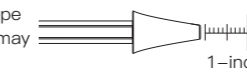
a. Please use the provided alcohol pad, or a Q-tip to sanitize the tip of the camera before and after EACH use. This can prevent ear wax to stick on the tip of the camera and cause blurry images. You can apply some pressure when cleaning the camera to completely remove stubborn ear wax.



Alcohol

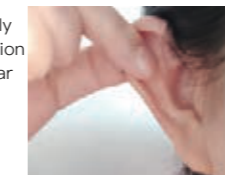
Q-tip

b. Please keep a focal length of about 1-inch to achieve the best quality image (placing the scope too far from your focal point may result in blurry images).



1-inch

c. The ear canal is not perfectly straight, gently adjust the position of the otoscope to view your ear drum clearly.



-08-



Customer Service

We offer a 12 month guarantee for our products. If you experience any problems during this period, please contact us for free after-sales supports.

✉ info@teslong.com

☎ 877-899-8809



© Teslong NTE100i 202009 V2.0
MADE IN CHINA