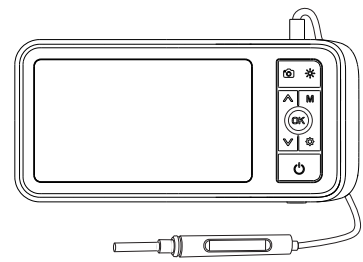


## USER MANUAL

### Digital Otoscope Camera



#### Product Manual

MS450-NTE is a high performance otoscope with a 4.5 inches high definition color IPS screen. It is ergonomically designed so that users can control the main buttons with just 1 hand. The snapshot and recording functions are supported, photos and videos can be saved on TF memory card (Micro-SD card).

**WARNING:** This product is not intended to use in professional health care environments unless specifically designated.

#### Safety and Maintenance

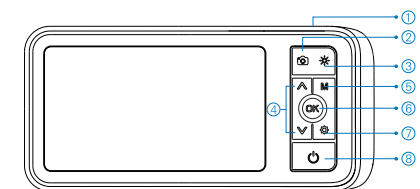
- Make sure you disinfect the adapter.
- Clean the surface of the device with 75% medical alcohol before contacting with the skin.
- Disinfect the adapters with saturated steam for 10minutes at 134°C or 273°F.
- This appliance is not suitable for people with limited physical, sensory or mental capabilities.
- Keep bystanders and children away while operating the tool.

#### Battery Description

- Please use 5V household charger that meets the safety regulations to charge this device.
- This device can work while charging.
- If you do not use the device for a long time, please ensure that it is charged at least once every 3 months to prevent irreparable damage caused by excessive battery discharge.

- 01 -

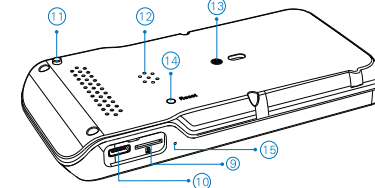
#### Functions



- ① Camera probe connector.
- ② Snap button: Photo taking/Start video recording/End video recording.
- ③ Light control button: To adjust the the LED's brightness of the camera.
- ④ Up and down selection button/rotate 180°
- ⑤ Mode switch button: switch between three function modes: Photo taking, video recording and playback.
- ⑥ Enter button: Confirm selection/freeze screen
- ⑦ Settings button: enter/exit settings menu.
- ⑧ Power button: Press and hold the Power button to turn ON/OFF.

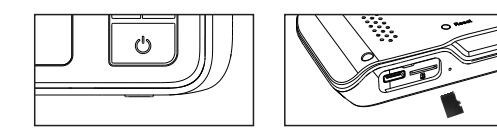
- 02 -

#### Functions



- ① TF card slot
- ② Charging port
- ③ Camera probe lock( Press this button to unlock and pull out the camera probe)
- ④ Speaker
- ⑤ Installation hole of Screen bracket
- ⑥ Reset button
- ⑦ Microphone

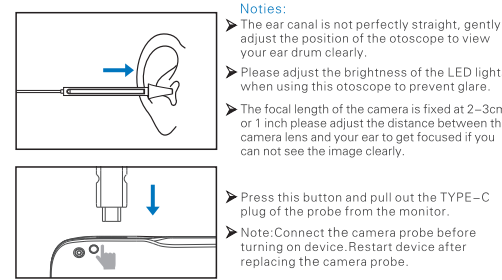
#### Instructions



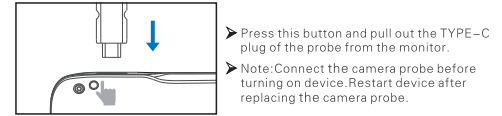
Long press the power button to turn on/off device.

The device is equipped with a TF memory card(inserted). Gently press to eject the card.

- 03 -



- Notes:**
- The ear canal is not perfectly straight, gently adjust the position of the otoscope to view your ear drum clearly.
  - Please adjust the brightness of the LED lights when using this otoscope to prevent glare.
  - The focal length of the camera is fixed at 2-3cm or 1 inch please adjust the distance between the camera lens and your ear to get focused if you can not see the image clearly.

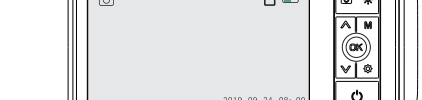


- Press this button and pull out the TYPE-C plug of the probe from the monitor.
- Note: Connect the camera probe before turning on device. Restart device after replacing the camera probe.

- Insert TF card:**
- Power off device first before insert TF card.
  - Make sure the direction and the front and back sides is correct when insert the TF card.
  - Do not use excessive force when inserting or removing the TF card to prevent damages of card slot structure.

Mode: Press "M" to switch the three modes: photo taking/video recording/playback.

TF card status: TF card inserted/no card



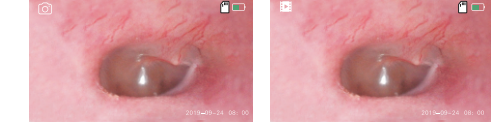
Date and time: modify the date and time in Settings menu

- 04 -

#### Language Settings

The default language is English, and the system supports English, Chinese, German, French, Spanish, Italian, Russian, and Japanese. Setting path: Press the **Ⓢ** button twice to enter setting page. Select second item: language on settings page. Press up and down keys to select the language you need. Press **Ⓢ** to save your choice.

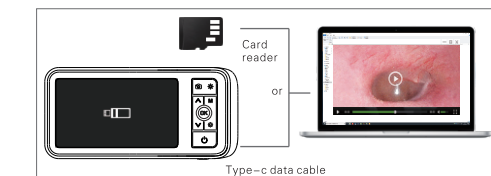
#### Photo taking/Video recording/Playback



Press **Ⓢ** to switch to the photo taking or video recording mode, and press **Ⓢ** to take a photo or start recording.

Press **Ⓢ** to switch to playback mode, press **Ⓢ** to select photo or video to view, and press **Ⓢ** to delete photo or video.

#### Copy photo and video files to computer



You can use a TF card reader to copy data directly or use a type-C cable to connect to a computer for copying.

➤ Please pull out probe camera first before using Type-C cable.

- 05 -

#### Specification Parameters

**Screen**  
Screen: 4.5 inches IPS HD Display  
Port: Type-C charging port, TF memory card slot

**Camera**  
Diameter: 3.9mm  
Viewing angle: 70°  
Depth of Field: 20mm—30mm  
Light Source: 6 adjustable high-intensity LEDs

**Others**  
Operating Temperature: 32° F to 113° F (0° C to 45° C)  
Power Source: 2500mAh Lithium Battery  
Max battery life: 3-4 hours  
Charging time: 3-4 hours

**Packaging**  
Monitor, Otoscope, Type-C charging cable, user manual, Screen Bracket  
Accessories □ Specula, Ear-pick

- 06 -