

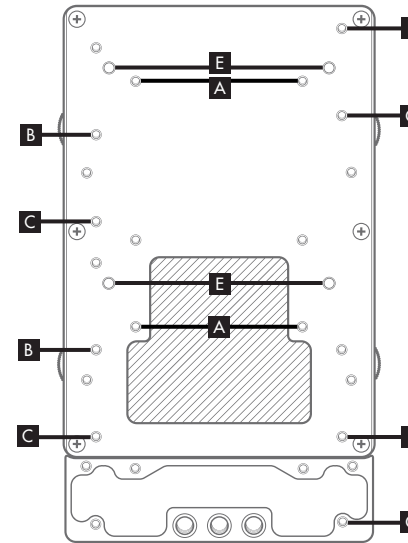
INSTALLATION GUIDE



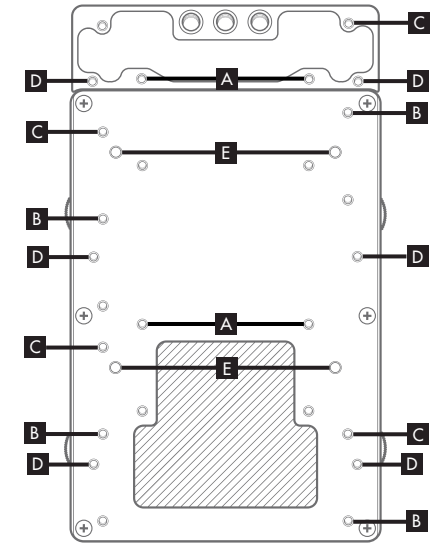
Find appropriate screws and threaded holes by using the Screw Chart below. Insert and tighten into corresponding hole as shown on Hole Diagram

SCREW CHART	
A=	V-Mount- M3x8mm Phillips
B=	Gold Mount (Center Position)- M3x12mm Phillips
C=	Gold Mount (High/Low Position)- M3x12mm Phillips
D=	RED Brand V-Mount- M3x14mm Phillips
E=	Accessory Attachment/Switrnix Jetpack- M3x6mm Phillips

LOW POSITION



HIGH POSITION



© Wooden Camera, Inc. 2011-2019

INCLUDED

INSTALLATION

PLATE EXTENSION



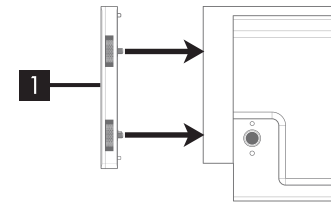
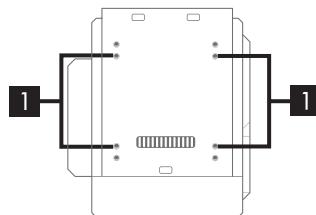
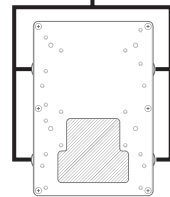
3mm Allen Wrench

SCREW PACKS

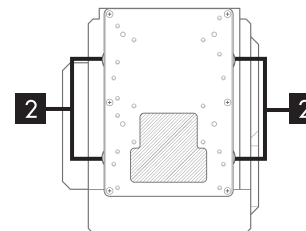
- 4x M3x6mm Phillips
- 4x M3x8mm Phillips
- 4x M3x12mm Phillips
- 4x M3x14mm Phillips

1. Locate Thumb Wheels on Quick Back, align to proper Threaded Holes on Camera as illustrated.

THUMB WHEELS



2. Tighten Thumb Wheels to secure Attach Battery Mount using corresponding Pan Head Screws (see Hole Chart)



For larger size battery plate attachment such as V-Mount attach Plate Extension to Quick Back

1. Locate M4 Screws inside Plate Extension
2. Align M4 screws to M4 holes on QB Bottom for low position, and M4 Holes on QB top for high position. Tighten with allen wrench to secure.
3. Attach Quick Back to Camera Body

