


KS 71 Elements Quick Selection Guide

STEP 1 - Optical Elements Quick Selection Guide											
Type of Light	Part Number	Color	Operating Voltage	Price	Type of Light	Part Number	Color	Operating Voltage	Price		
Incandescent Permanent*	64110000	Red	Depends on bulb selection (bulb sold separately)	\$22.00	Xenon Flashing Light	64310055	Red	24VDC	\$106.00		
	64120000	Green		\$22.00		64320055	Green		\$106.00		
	64130000	Yellow		\$22.00		64330055	Yellow		\$106.00		
	64140000	Clear		\$22.00		64340055	Clear		\$106.00		
	64150000	Blue		\$22.00		64350055	Blue		\$106.00		
Incandescent Bulbs	95584035		24V AC/DC	\$8.00		64310067	Red	115VAC	\$91.00		
	95584038		230VAC	\$8.00		64320067	Green		\$91.00		
	95584057		115V AC/DC	\$8.00		64330067	Yellow		\$91.00		
LED Permanent	64410075	Red	24V AC/DC	\$53.00		LED Blinking Light	64340067		Clear	24V AC/DC	\$91.00
	64420075	Green		\$53.00			64350067		Blue		\$91.00
	64430075	Yellow		\$53.00	64411075		Red	\$70.00			
	64440075	Clear		\$82.00	64421075		Green	\$70.00			
	64450075	Blue		\$82.00	64431075		Yellow	\$70.00			
	64445055**	Multi	24VDC	\$213.00	64441075		Clear	\$92.00			
	64410067	Red	115VAC	\$63.00	64451075		Blue	\$92.00			
	64420067	Green		\$63.00	64411067		Red	\$73.00			
	64430067	Yellow		\$63.00	64421067		Green	\$73.00			
	64440067	Clear		\$92.00	64431067		Yellow	\$73.00			
64450067	Blue	\$92.00		64441067	Clear	\$103.00					
LED Flashing Light	64412055	Red	24VDC	\$128.00	LED Rotating Light	64413075	Red	24V AC/DC	\$118.00		
	64422055	Green		\$128.00		64423075	Green		\$118.00		
	64432055	Yellow		\$128.00		64433075	Yellow		\$118.00		
	64442055	Clear		\$201.00		64443075	Clear		\$183.00		
	64452055	Blue		\$201.00		64453075	Blue		\$183.00		

* Bulbs are required for permanent incandescent optical element.

** The multicolor element can be combined with up to 2 additional signal elements.

STEP 2 - Audible Elements Quick Selection Guide					
Part Number	Description	Voltage	Tone Frequency	Max. Volume @ 1m	Price
64580075	Buzzer element	24V AC/DC	1.75 kHz	85dB	\$53.00
64580077		115VAC			\$63.00
64585055	Multi-functional siren, external trigger	24VDC	1.6 / 3.4 kHz	100dB	\$106.00
64581055	Siren element with self-adjusting sound output	24VDC	2.5 kHz	100dB	\$139.00

STEP 3 - Terminal Elements Quick Selection Guide			
Part Number	Description	Mounting	Price
64082000	Screw terminal with M3 clamps	base bracket	\$29.00
64080000	Terminal element with CAGE CLAMP® technology		\$29.00
64083000	Screw terminal with M3 clamps	tube	\$29.00
64081000	Terminal element with CAGE CLAMP® technology		\$29.00

STEP 4 - Tube Mounting/Accessories Quick Selection		
Part Number	Description	Price
97584510	Anodized tube, 100mm [3.94 in] long	\$12.50
97584025	Anodized tube, 250mm [9.84 in] long	\$15.50
97584040	Anodized tube, 400mm [15.75 in] long	\$20.50
97584060	Anodized tube, 600mm [23.62 in] long	\$27.50
97584080	Anodized tube, 800mm [31.49 in] long	\$35.00
97584003	Anodized tube, 1000mm [39.37 in] long	\$47.50
96000018	Tube with clamp	\$51.00
96000025	Adapter for single-hole mounting	\$51.00
97584010	Base with integrated tube	\$25.50
97584090	Plastic base for 25mm [0.98 in] diameter tube	\$13.50
97584091	Metal base for 25mm [0.98 in] diameter tube	\$20.50
96000031	Plastic tube for foldaway base	\$8.75
97584002	Adapter for tube mounting	\$9.75
96000004	Cable gland for surface mounting	\$5.50
96000030	Foldaway base	\$55.00

STEP 5 - Contact Boxes & Brackets Quick Selection Guide			
Mounting Option	Part Number	Description	Price
Plain Base Mount	97584001	Contact box with side exit cable	\$18.50
	96000002	Bracket for base mounting	\$16.50
	97584085	Bracket for 1-sided mounting	\$14.00
	97584086	Bracket for 2-sided mounting	\$15.50
Tube Base Mount	97584001	Contact box with side exit cable	\$18.50
	97584004	Contact box w/ magnetic base and side cable exit	\$50.00
	96000014	Bracket for base mounting w/ concealed cable entry	\$20.00
	96000001	Bracket for tube mounting	\$16.50

KS 71 Optical Elements Specifications

Optical Elements Technical Specifications																	
Description	Voltage	Part Number	Color	Current	Starting Current	Operating Temp/Protection	Life Duration	Flash Frequency	Housing Material	Weight							
Incandescent Permanent Light Element with B15d Bayonet Socket	12-240 V Depends on bulb selection. (bulb sold separately)	64110000	Red	Depends on bulb selection. (bulb sold separately)	-	-20°C to 60°C [-4°F to 140°F] IP65	up to 5,000h	-	Polycarbonate	55g [1.94 oz]							
		64120000	Green														
		64130000	Yellow														
		64140000	Clear														
		64150000	Blue														
LED Permanent Light Element	24V AC/DC	64410075	Red	max. 30mA	max. 500mA	-20°C to 50°C [-4°F to 122°F] IP65	up to 100,000h	-	Polycarbonate	58g [2.05 oz]							
		64420075	Green	max. 25mA													
		64430075	Yellow	max. 30mA													
		64440075	Clear	max. 25mA													
		64450075	Blue	max. 25mA													
	24VDC	64445055	Multi	max. 120mA	-	up to 50,000h	-	-	Polycarbonate	63g [2.22 oz]							
		115VAC	64410067	Red							max. 20mA	-	-20°C to 50°C [-4°F to 122°F] IP65	up to 100,000h	-	Polycarbonate	58g [2.05 oz]
			64420067	Green													
			64430067	Yellow													
			64440067	Clear													
	64450067		Blue														
	LED Flashing Light Element	24VDC	64412055	Red	35mA	max. 500mA	-20°C to 50°C [-4°F to 122°F] IP65	up to 50,000h	1Hz on for 2x10 ms	Polycarbonate	75g [2.65 oz]						
			64422055	Green													
			64432055	Yellow													
			64442055	Clear													
64452055			Blue														
Xenon Flashing Light Element	24VDC	64310055	Red	125mA	max. 500mA	-20°C to 50°C [-4°F to 122°F] IP65	up to 4,000,000 flashes	1Hz on for 10 ms	Polycarbonate	73g [2.57 oz]							
		64320055	Green														
		64330055	Yellow														
		64340055	Clear														
		64350055	Blue														
	115VAC	64310067	Red	22mA	-	-20°C to 50°C [-4°F to 122°F] IP65	up to 4,000,000 flashes	1Hz on for 10 ms	Polycarbonate	74g [2.61 oz]							
		64320067	Green														
		64330067	Yellow														
		64340067	Clear														
		64350067	Blue														
LED Blinking Light Element	24V AC/DC	64411075	Red	max. 30mA	max. 500mA	-20°C to 50°C [-4°F to 122°F] IP65	up to 100,000h	1Hz on for 550 ms	Polycarbonate	58g [2.05 oz]							
		64421075	Green	max. 25mA													
		64431075	Yellow	max. 30mA													
		64441075	Clear	max. 25mA													
		64451075	Blue	max. 25mA													
	115VAC	64411067	Red	max. 20mA	-	-20°C to 50°C [-4°F to 122°F] IP65	up to 100,000h	1Hz on for 550 ms	Polycarbonate	58g [2.05 oz]							
		64421067	Green														
		64431067	Yellow														
		64441067	Clear														
		64451067	Blue														
LED Rotating Light Element	24V AC/DC	64413075	Red	max. 40mA	max. 500mA	-20°C to 50°C [-4°F to 122°F] IP65	up to 100,000h	120 rotations per minute	Polycarbonate	67g [2.36 oz]							
		64423075	Green														
		64433075	Yellow														
		64443075	Clear														
		64453075	Blue														



Terminal Pin Activation of Multi-Color LED Permanent Light Element			
Pin 1	Pin 2	Pin 3	Function
24V	-	-	Red
-	24V	-	Green
24V	24V	-	Yellow
-	-	24V	Blue
24V	24V	24V	White
24V	-	24V	Violet
-	24V	24V	Turquoise



Bulbs for Incandescent Permanent Optical Element				
Part Number	Description	Wattage	Voltage	Life Duration
95584035	Bulb for incandescent light BA15d Bayonet Socket	5W	24VDC	up to 5,000h
95584038			230VAC	
95584057			115VAC	


Configuring Your KombiSIGN 71 Stack Light

▶ STEP 1

Select the required optical elements for your application

▶ STEP 2

Select the optional audible elements for your application



Optical Signal Elements

- Incandescent Permanent Light
- LED Permanent Light
- LED Flashing Light
- LED Blinking Light
- LED Rotating Light
- Xenon Flashing Light

Audible Signal Elements

- Buzzer Element
- Siren Element

Plain Base Mount

Tube Base Mount

▶ STEP 3

Select the correct terminal element for your mounting option (includes cap)



Screw terminal
Order no. **64082000**



CAGE CLAMP® terminal
Order no. **64080000**




Screw terminal
Order no. **64083000**




CAGE CLAMP® terminal
Order no. **64081000**

▶ STEP 4


Where appropriate, select a base and the desired tube length (only for tube mounting)



Tube with clamp
Order no. **96000018**



Adapter for single hole mounting
Order no. **96000025**



Base with integrated tube
Order no. **97584010**

Tube Ø 25 mm, all anodized
Order no.

- 100 mm long **97584510**
- 250 mm long **97584025**
- 400 mm long **97584040**
- 600 mm long **97584060**
- 800 mm long **97584080**
- 1000 mm long **97584003**

Base for Tube, plastic
Order no. **97584090**

Base for Tube, metal
Order no. **97584091**

Foldaway Base
Order no. **96000030**

Tube Ø 25 mm, plastic, only for Foldaway Base, 45 mm long
Order no. **96000031**

▶ STEP 5

Where appropriate, select the bracket and the contact box.



Contact box with side cable exit
Order no. **97584001**



Bracket for base mounting
Order no. **96000002**



Contact box with side cable exit
Order no. **97584001**



Contact box with magnetic base and side cable exit
Order no. **97584004**



Bracket for 1-sided mounting
Order no. **97584085**



Bracket for 2-sided mounting
Order no. **97584086**



Bracket for base mounting with concealed cable entry
Order no. **96000014**



Bracket for tube mounting
Order no. **96000001**

Werma Modular Stack Lights Overview



WERMA

S I G N A L T E C H N I K

Description

WERMA's modular stack light system offers total choice and flexibility as it allows for a completely free combination of optical and audible signal elements. The bayonet mechanism allows elements to be mechanically and electrically connected within seconds.

This means that elements can be safely and easily changed (contact-voltage proof) without the need for tools.

Typical product applications include; machine tools, packaging machines, conveyor systems, printing machines, loading docks, retail centers (check outs), queuing indicators for theme parks, and more.

Product highlights:

- Signal elements in common voltages (24V DC and 115V AC)
- Modular system allows combination as required
- Two different sizes (70 and 50 mm diameter)
- Five colors available
- Wide range of audible elements
- Diverse and flexible solutions

Simple assembly with bayonet mechanism

- Simple mounting and removal of the elements
- New combinations at the twist of a hand
- Tool-free bulb change
- Position marks to guide alignment



Werma Stack Lights Family Overview

KombiSIGN 71

Modular IP65-rated stack light system with 70 mm diameter for use in standard applications.

KS 71 stack lights are available in 5 colors and multiple light effects (permanent, blinking, rotating, flashing). Multiple light sources (incandescent, LED, Xenon tube) and a wide variety of mountings are available. Combine up to 5 elements per terminal. Various terminal design choices are available as well as multiple voltages and audible elements up to 105 dB.

KombiSIGN 50

Modular IP54-rated stack light system with 50 mm diameter for use on smaller machines.

KS 50 stack lights are available in 5 colors with either permanent or blinking light effects in multiple voltages. A choice of incandescent or LED light sources is available as well as an 80 dB audible element. Elements can be combined in a variety of mountings, up to 4 elements per mounting for 360° of visibility.



KS 71 Terminal Elements



Screw terminals



CAGE CLAMP® terminals

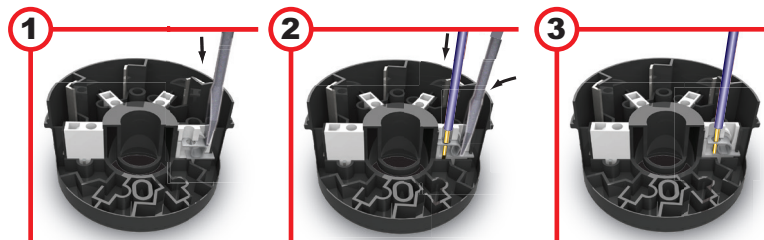
KS 50 Terminal Element



Screw terminal

Safe and efficient connection thanks to CAGE CLAMP® technology

Terminal elements with CAGE CLAMP® technology enable leads to be quickly and easily wired, guaranteeing a secure and reliable contact.



1 Insert screwdriver at a slight angle into opening as far as possible.

2 Open spring-loaded clamp with the help of the screwdriver and insert wire as far as possible.

3 Remove screwdriver - the wire is firmly clamped.

CAGE CLAMP® is a registered trademark of WAGO Kontakttechnik GmbH.

