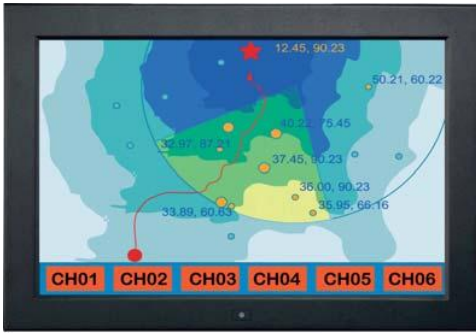


ID-19Aw-LED 19" Widescreen LCD w/ LED-backlit Panel Display



6mm aluminum front bezel with optional

NEMA 4 / IP65 front protection



Display Benefits

- ▶ 19" widescreen LCD with resolution 1440 x 900
- ▶ Green LED-backlit panel technology
- ▶ Rugged construction against external impact
- ▶ Protective 3mm glass

Options

- 3G / HD / SD-SDI Broadcast-grade input
- MIL-type or lockable connector
- MC Multi-display control solution
- 48V, 24V or 12VDC power
- W19" Touchscreen : Capacitive, Resistive
- Quad display for CCTV
- S-Video + Composite (BNC) or Audio input
- TV - Analog
- HDMI or DVI-D (either one for AV2.2 upgrade)

Basic I/O



AV2.2D upgrade I/O



AV3.0 upgrade I/O with advanced features



AV2.2H upgrade I/O



Specifications

• LCD Panel

Manufacturer :	
Size (diagonal) :	19" Widescreen TFT
Max resolution :	1440 x 900
Brightness (cd/m2) :	250
Backlight :	LED
Colors :	16.7 M
Contrast ratio (typ) :	1000 : 1
Viewing angle (H/V) :	160° x 160°
Active area (mm) :	408 x 255
MTBF (hrs) :	30,000
Signal input :	DVI-D / VGA

• Weight

Net : 5 kgs (11 lbs)

• Mounting :

Panel mount / VESA mount

• Environmental

Operating :	0 to 50°C Degree
Storage :	-5 to 60°C Degree
Relative humidity :	5~90%, non-condensing
Shock :	10G acceleration (11 ms duration)
Vibration :	5~500Hz 1G RMS random vibration

• Casing Color :

Black front panel (RAL 9005)
Dark grey rear case (RAL 7037)

• Regulatory :

FCC, CE

• Power

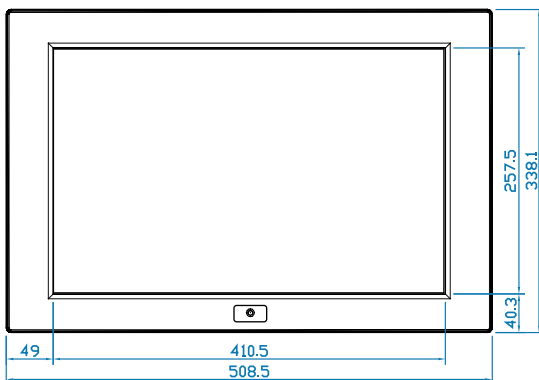
Input :	Auto-sensing 100 to 240VAC, 50 / 60Hz
Consumption :	Max. 48 Watt, Standby 5 Watt

• Dimensions

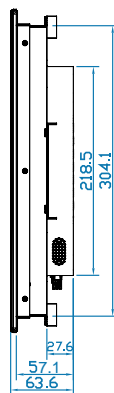
Product : 508.5 x 63.6 x 338.1 mm / 20 x 2.5 x 13.3 inch

Diagrams (mm)

Front View



Side View



Rear View

