



RAILYARD SUPPLY.com



Product CATALOG

Industrial Product Distribution



Railyard Supply, a division of CWI Railroad System Specialists
US Headquarters:
1827 County Line Rd
Barto, PA 19504

Ryan Wolfe – Sales Director
610-652-5218
sales@railyardsupply.com



Table of Contents

<i>Line Card</i>	3
<i>Terminal Loading Products</i>	4
<i>Sight Glasses</i>	5
<i>Meters</i>	6
<i>Pinch Valves / Knife Gate Valves</i>	7
<i>Butterfly Valves / Electric Actuators</i>	8
<i>Fuel Control Valves</i>	9
<i>Locomotive Lighting</i>	10
<i>Locomotive Jump Starters</i>	11
<i>Railroad Facilities Systems</i>	12
<i>RYDM Systems</i>	13
<i>Cable Protection Solutions</i>	14
<i>Metal Stamping, Forming, Fabrication</i>	15
<i>Natural Gas Filters and Dryers</i>	16
<i>Air Filters and Dryers</i>	17
<i>Torque Tools</i>	18
<i>Personal Lighting Systems</i>	19
<i>Construction</i>	20
<i>Service / Maintenance</i>	21
<i>Supplier Networks</i>	22
<i>Training Certifications</i>	23
<i>About Us</i>	24



Railyard Supply, a division of CWI Railroad System Specialists
US Headquarters:
1827 County Line Rd
Barto, PA 19504

Ryan Wolfe – Sales Director
610-652-5218
sales@railyardsupply.com





- Smith meters, parts, accessories



- Sight Glasses
- Flow Indicators
- Level Gauges
- Custom & Standard



- Pneumatic Pinch Valves
- Mechanical Pinch Valves
- Knife Gate Valves
- Silo Overfill Protection



- Butterfly Valves
- w/ or w/o Thermal Expansion
- Electric Actuators



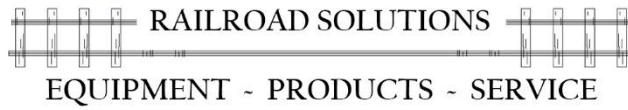
- Halogen and Incandescent
- Locomotive Headlights
- Locomotive Ditch Lights
- LED Engine Room Lights



- Control Valves



- Cable Protection Solutions



- Loading Arms
- Terminal Products
- Swivel Joints
- Adapters
- LOK Products
- Process Components



Stamping - Forming - Manufacturing

- Metal Stamping



- Natural Gas Filters
- Natural Gas Dryers



- Compressed Air Dryers
- Compressed Air Filters
- Desiccants
- Portable Drying Solutions
- Automatic Drain Valves



- Locomotive Jump Starters



- Torque Wrenches
- Torque Multipliers
- Torque Measurement



Railroad System Specialists

Integration • Sales • Service

- Railroad Facilities Systems
- Railyard Construction
- Service / Maintenance
- Locomotive Servicing Equipment



RAIL YARD DATA MANAGEMENT



- Rail Yard Data Management
- Fuel Data Collection
- Tank Monitoring
- AEI Locomotive Tracking



- Halo Lighting Systems
- Batteries, and Replacement Parts

Training / Certifications



Find us on these supplier networks



Railyard Supply, a division of CWI Railroad System Specialists

US Headquarters:
1827 County Line Rd
Barto, PA 19504

Ryan Wolfe – Sales Director
610-652-5218
sales@railyardsupply.com



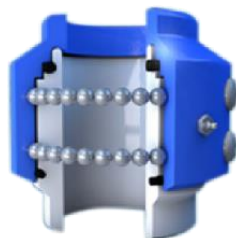
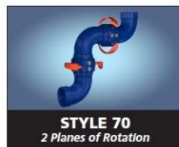
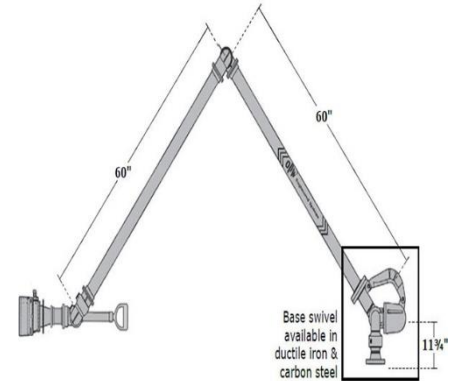
Terminal Loading Products



ENGINEERED SYSTEMS

A DOVER COMPANY

- Loading arms and accessories
- Terminal rack products
- API couplers
- Adapters
- Swivel joints
- LOK products
- Process products
- Overfill protection and grounding
- And more...



Railyard Supply, a division of CWI Railroad System Specialists

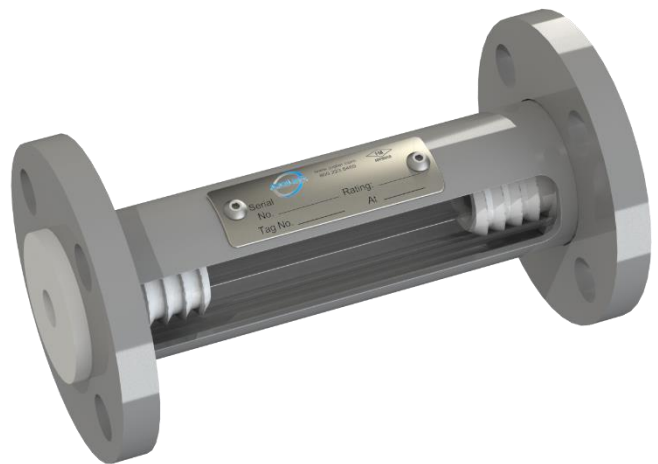
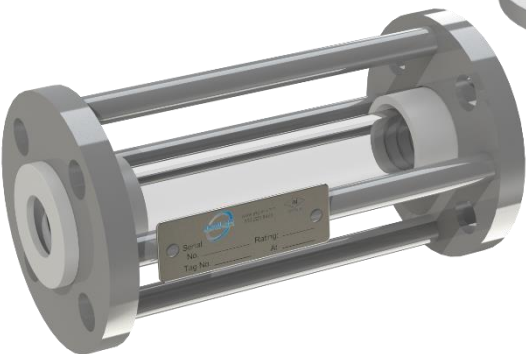
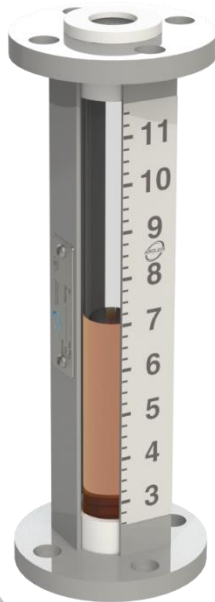
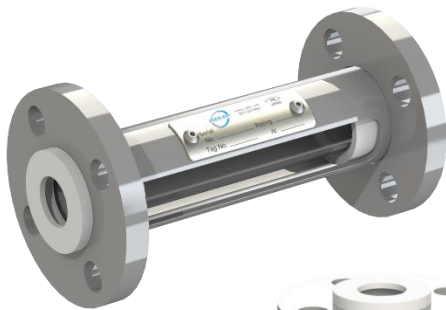
US Headquarters:
1827 County Line Rd
Barto, PA 19504

Ryan Wolfe – Sales Director
610-652-5218
sales@railyardsupply.com



Sight Glasses

- Sight glasses
- Flow indicators
- Level gauges
- Custom or standard
- Teflon lined
- Armored
- Minimal wetted parts



Railyard Supply, a division of CWI Railroad System Specialists

US Headquarters:
1827 County Line Rd
Barto, PA 19504

Ryan Wolfe – Sales Director
610-652-5218
sales@railyardsupply.com



Meters & Parts

- Smith positive displacement meters
- Universal pulsers
- Gears
- Calibrators
- Misc. parts



TechnipFMC



Railyard Supply, a division of CWI Railroad System Specialists

US Headquarters:
1827 County Line Rd
Barto, PA 19504

Ryan Wolfe – Sales Director
610-652-5218
sales@railyardsupply.com



Pinch Valves / Knife Gate Valves

- Pneumatic actuated
 - VMC series
 - VMP series
 - VF series
 - VT series
- Mechanically actuated
 - OV series
- Knife Gate Valves
 - Type A
 - Type B
 - Type C
- Silo overfill protection



Railyard Supply, a division of CWI Railroad System Specialists

US Headquarters:
1827 County Line Rd
Barto, PA 19504

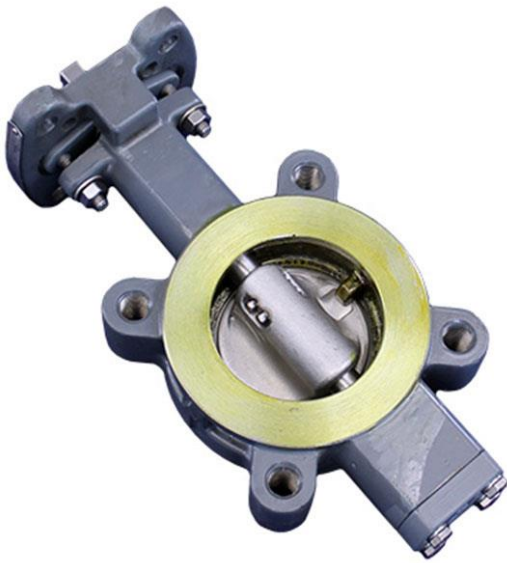
Ryan Wolfe – Sales Director
610-652-5218
sales@railyardsupply.com



Butterfly Valves / Electric Actuators

- Stock items include
 - Electric actuators
 - 3" viton seated valves
 - 4" viton seated valves
 - 3" metal seated valves
 - 4" metal seated valves
- Account for thermal expansion
 - 10 psi check valves available

Valworx®



Railyard Supply, a division of CWI Railroad System Specialists

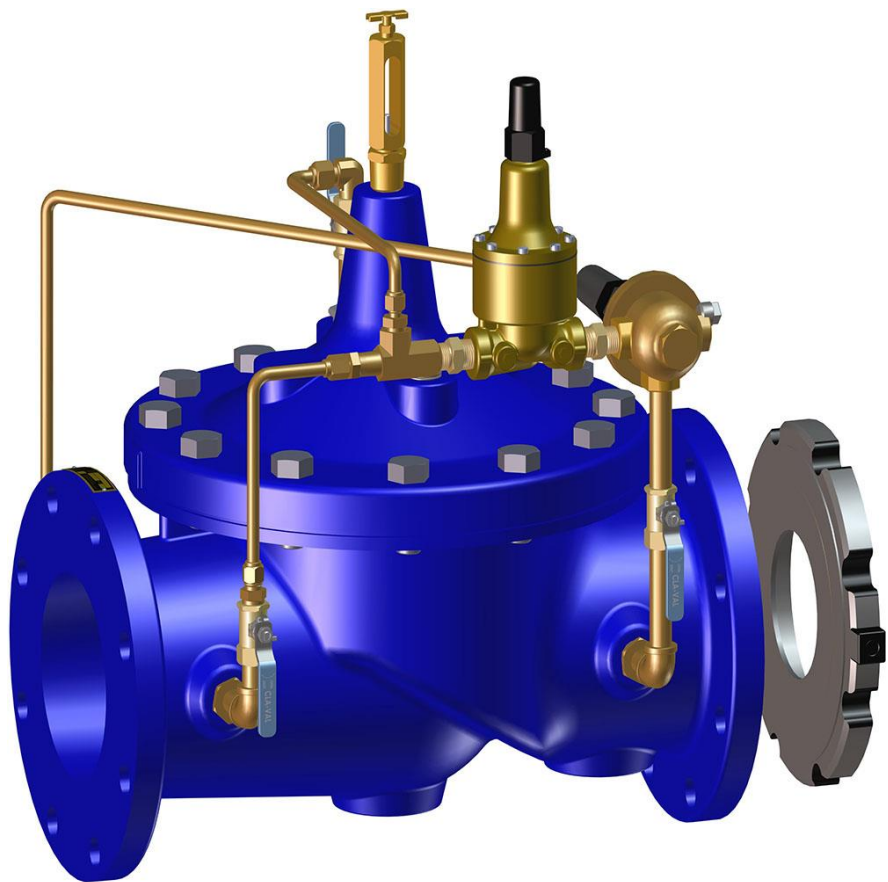
US Headquarters:
1827 County Line Rd
Barto, PA 19504

Ryan Wolfe – Sales Director
610-652-5218
sales@railyardsupply.com



Fuel Control Valves

- Fuel specific control valves
- Pilot valves
- Pressure reducing
- Pressure relieving



Railyard Supply, a division of CWI Railroad System Specialists

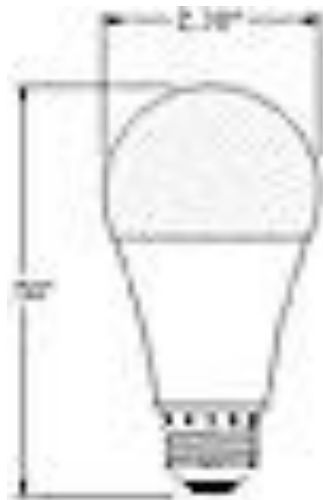
US Headquarters:
1827 County Line Rd
Barto, PA 19504

Ryan Wolfe – Sales Director
610-652-5218
sales@railyardsupply.com



Locomotive Lighting

- Halogen headlights
- Incandescent headlights
- Step / ditch lights
- LED engine room lights



Railyard Supply, a division of CWI Railroad System Specialists

US Headquarters:
1827 County Line Rd
Barto, PA 19504

Ryan Wolfe – Sales Director
610-652-5218
sales@railyardsupply.com



Locomotive Jump Starters

- AGM64RR
- 214RR
- 2400RR
- 3324RR
- 3370RR
- Start up to 6000 hp engines



Railyard Supply, a division of CWI Railroad System Specialists
US Headquarters:
1827 County Line Rd
Barto, PA 19504

Ryan Wolfe – Sales Director
610-652-5218
sales@railyardsupply.com



Railroad Facilities Systems

- Locomotive service centers and equipment
- Heated reel, pump, tote, and elevated cabinets
- Fixed and mobile sand systems
- High capacity locomotive fueling
- Meter, pump, and filter systems
- Truck loading / unloading systems
- Tank car loading / unloading systems
- Lube oil, water, and compressed air systems
- LST equipment
- Automated derail systems
- Locomotive movement alarm systems
- RYDM
- AEI tracking systems

CWI

Railroad System Specialists

Integration • Sales • Service



Railyard Supply, a division of CWI Railroad System Specialists

US Headquarters:
1827 County Line Rd
Barto, PA 19504

Ryan Wolfe – Sales Director
610-652-5218
sales@railyardsupply.com



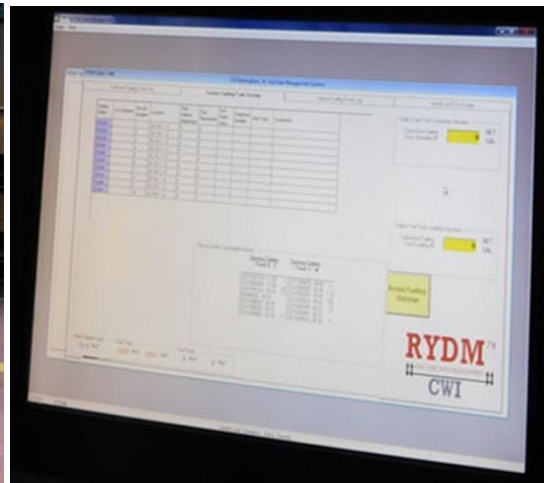
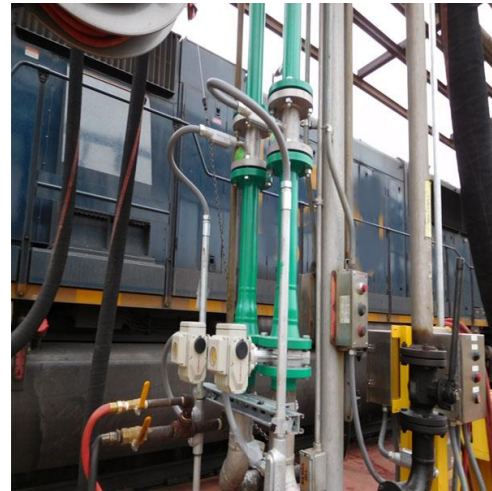
RYDM Systems

- Rail Yard Data Management
- Fuel monitoring
- Tank monitoring – any product
- Nozzle fueling
- AEI locomotive tracking
- SmartBox
- Truck unloading / loading
- Tank car unloading / loading
- Dedicated website
- Dedicated RYDM team
- Automated emails

RYDM

RAIL YARD DATA MANAGEMENT

CWI



Railyard Supply, a division of CWI Railroad System Specialists

US Headquarters:
1827 County Line Rd
Barto, PA 19504

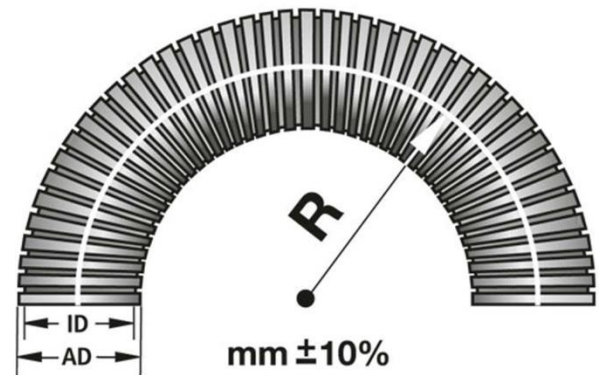
Ryan Wolfe – Sales Director
610-652-5218
sales@railyardsupply.com



Cable Protection Solutions

- Conduit and Fittings
- Fast assembly and disassembly
- Integrated sealing and locking mechanism
- No tools required
- Spiral wrap
- Hose sock

AEROSUSA INC.
Unsurpassed in Cable Protection and Strain Relief



Railyard Supply, a division of CWI Railroad System Specialists

US Headquarters:
1827 County Line Rd
Barto, PA 19504

Ryan Wolfe – Sales Director
610-652-5218
sales@railyardsupply.com



Metal Stamping, Forming, Fabrication

- Made in USA

CORONA



Stamping • Forming • Manufacturing



Railyard Supply, a division of CWI Railroad System Specialists

US Headquarters:
1827 County Line Rd
Barto, PA 19504

Ryan Wolfe – Sales Director
610-652-5218
sales@railyardsupply.com



Natural Gas Filters and Dryers

- Gas pak pro
- Pipeline deliquescent
- HLSXG explosion proof
- GF200 series filters



Railyard Supply, a division of CWI Railroad System Specialists
US Headquarters:
1827 County Line Rd
Barto, PA 19504

Ryan Wolfe – Sales Director
610-652-5218
sales@railyardsupply.com



Air Filters and Dryers

VAN AIR



- Dryers
 - Portable dryers
 - Single tower deliquescent
 - Mini heatless
 - Large heatless
 - HLSXA explosion proof
 - In-line desiccant
 - Moisture blocks
- Desiccants
- Coalescing filters
- Particulate filters
- Mist eliminators
- Moisture separators
- Automated drain valves



Railyard Supply, a division of CWI Railroad System Specialists

US Headquarters:
1827 County Line Rd
Barto, PA 19504

Ryan Wolfe – Sales Director
610-652-5218
sales@railyardsupply.com

 **RAILYARD**
SUPPLY.com
RAILROAD SOLUTIONS
EQUIPMENT • PRODUCTS • SERVICE

CWI
Railroad System Specialists
Integration • Sales • Service

17

Torque Tools

- Torque measurement tools
- Industrial torque wrenches
- Hand torque multipliers



Railyard Supply, a division of CWI Railroad System Specialists

US Headquarters:
1827 County Line Rd
Barto, PA 19504

Ryan Wolfe – Sales Director
610-652-5218
sales@railyardsupply.com



Personal Lighting Systems

- ¼ mile visibility
- 360 degree lighting
- Powerful flood task lighting
- Rechargeable battery
- Connects to any hard hat
- Lightweight and cordless



*Railyard Supply, a division of CV
US Headquarters:
1827 County Line Rd
Barto, PA 19504*

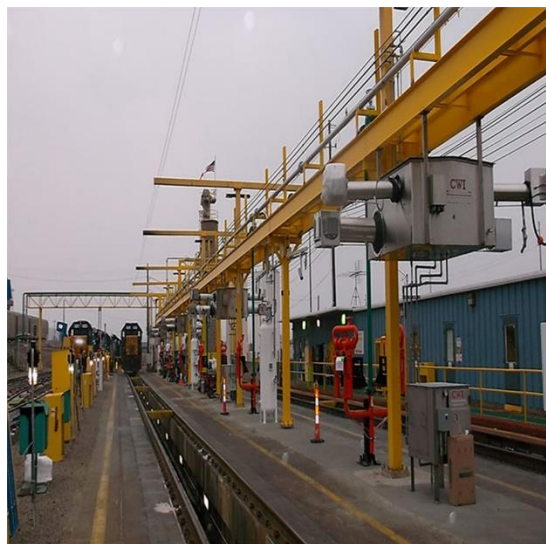
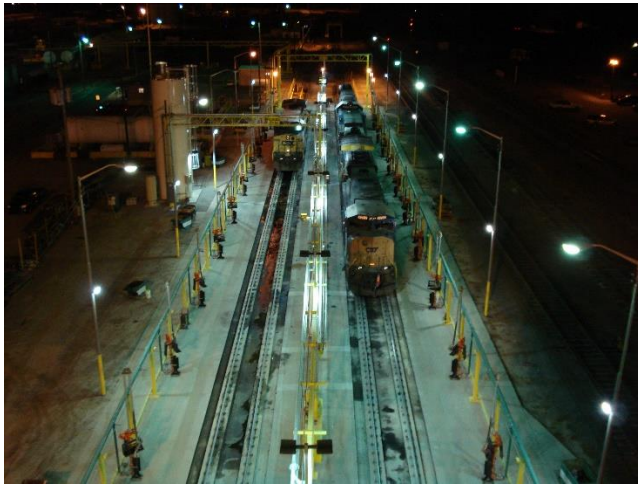
Railyard Construction

- Specializing in facilities, mechanical, and capital projects departments
- Licensed and insured
- Unlimited bonding capacity
- 35+ years experience
- Design and build projects
- In-house engineering
- CAD design
- Nationwide reach

CWI

Railroad System Specialists

Integration • Sales • Service



Railyard Supply, a division of CWI Railroad System Specialists

US Headquarters:
1827 County Line Rd
Barto, PA 19504

Ryan Wolfe – Sales Director
610-652-5218
sales@railyardsupply.com



Service / Maintenance

- Routine Maintenance
- Meter Calibration
- Fuel System Inspection
- Strainer cleaning, valve greasing
- Emergency Repairs
- Sand System Maintenance
- Free Telephone Support
- Nationwide Reach

CWI

Railroad System Specialists

Integration • Sales • Service



Railyard Supply, a division of CWI Railroad System Specialists

US Headquarters:
1827 County Line Rd
Barto, PA 19504

Ryan Wolfe – Sales Director
610-652-5218
sales@railyardsupply.com



Supplier Networks

Find Railyard Supply on these supplier networks!!!



**American Short Line and
Regional Railroad Association**

Railyard Supply, a division of CWI Railroad System Specialists

*US Headquarters:
1827 County Line Rd
Barto, PA 19504*

*Ryan Wolfe – Sales Director
610-652-5218
sales@railyardsupply.com*



22

Training Certifications



*Contractor
Training*



eRailSafeSM
a service of eVerifyfile



THE RIGHT FIT

RWT

ROADWAY WORKER TRAINING

A RailPros Company

Railyard Supply, a division of CWI Railroad System Specialists

US Headquarters:
1827 County Line Rd
Barto, PA 19504

Ryan Wolfe – Sales Director
610-652-5218
sales@railyardsupply.com



About Us

Railyard Supply is the railroad facilities systems and industrial product distribution partner that provides full 360-degree service to bring the most value for your investment. We believe customers are best served by a company that can meet all their needs. Since 1984, our company of engineers, fabricators, construction teams, service techs, sales agents, procurement teams, IT personnel, accounting, and leadership teams work together to provide best-in-class solutions. Our strategic problem solving and technology implementation helps each customer reach their goals.

- *Industrial distribution – products focused towards the railway industry*
- *Engineering – design our equipment and projects*
- *Fabrication – custom facilities equipment*
- *Construction – licensed and insured railyard construction*
- *Service – full support of our equipment, meter calibration, emergency services*
- *RYDM – online digital fuel monitoring, tank monitoring, and more*



Railyard Supply, a division of CWI Railroad System Specialists
US Headquarters:
1827 County Line Rd
Barto, PA 19504

Ryan Wolfe – Sales Director
610-652-5218
sales@railyardsupply.com

