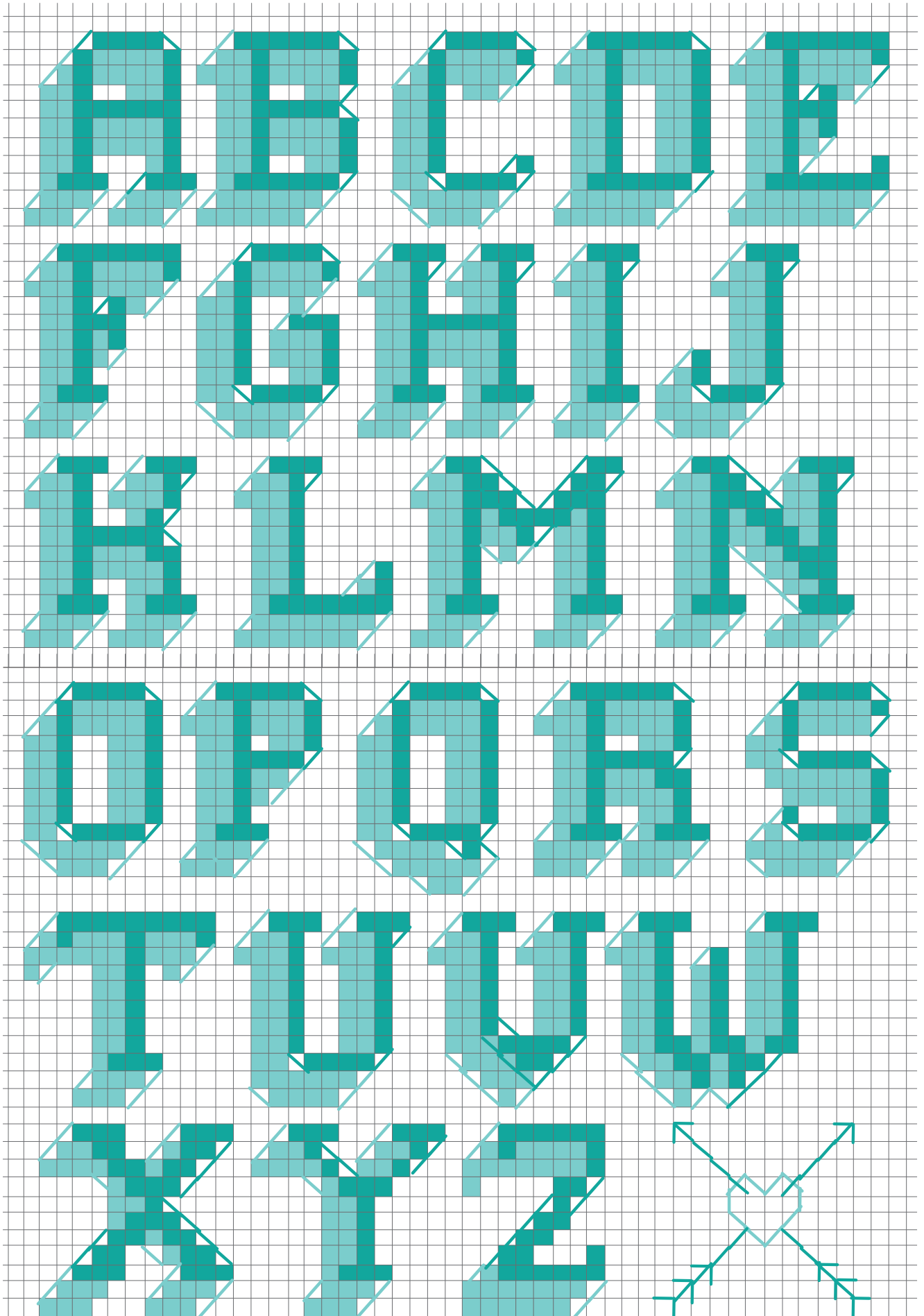


# STITCH LETTER TEMPLATE



Perfect for adding text on the Stitch Envelope Pouch



Find more inspiration, patterns and tutorials at [www.wearechasingthreads.com](http://www.wearechasingthreads.com)

# STITCH GLASSES TEMPLATE



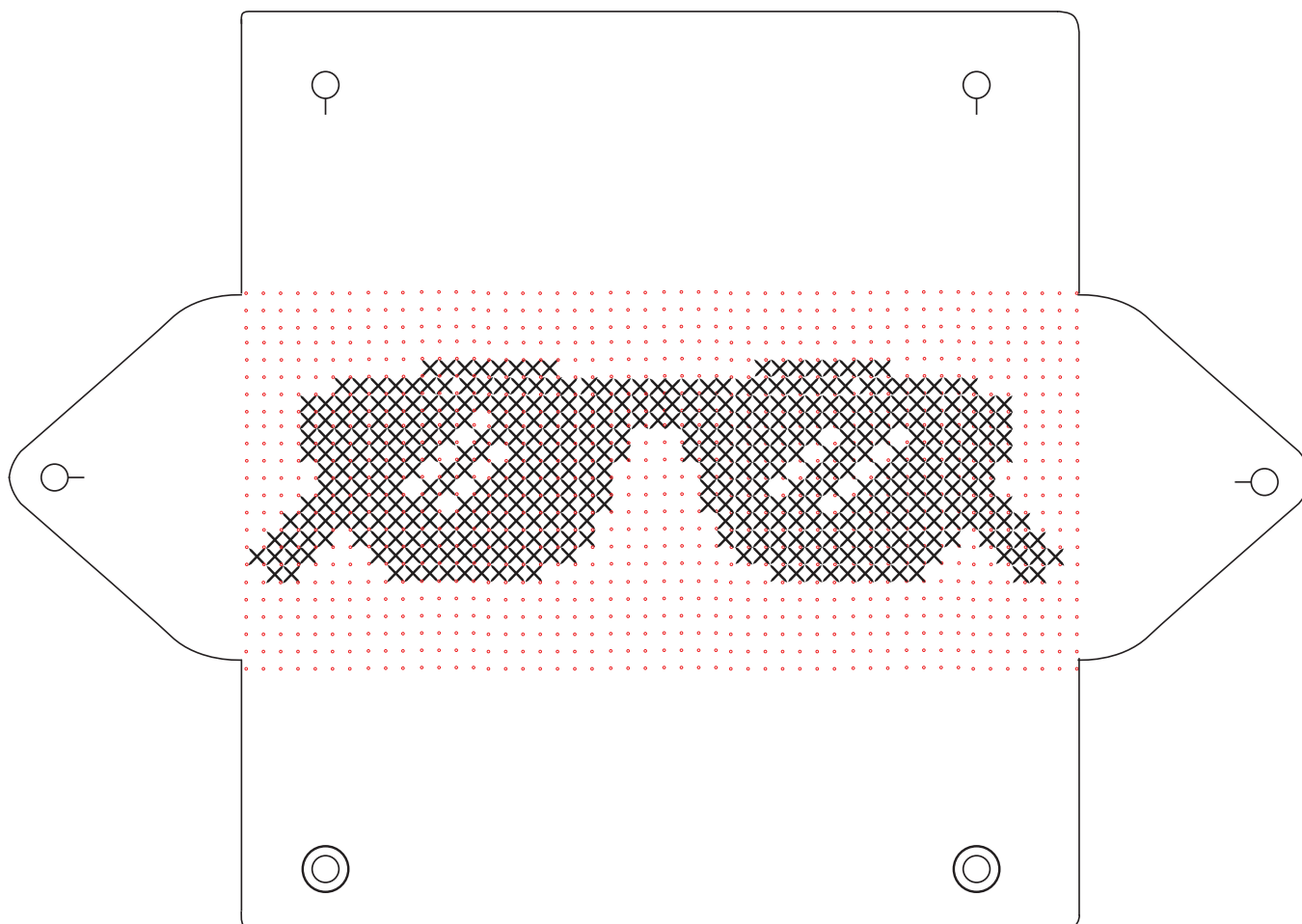
1. Unwind the thread and cut in half. The thread is made up of 6 strands, divide this down to only 2 or 3 strands for a finer design.



2. Thread your needle and tie a knot in the other end.



3. Open out the envelope fully flat. Starting from the back, sew through the pre-perforated holes to embroider the design of your choice.



4. Tie off your last stitch and cut the thread end. Fold the case back into an envelope and store with your glasses or stationery.