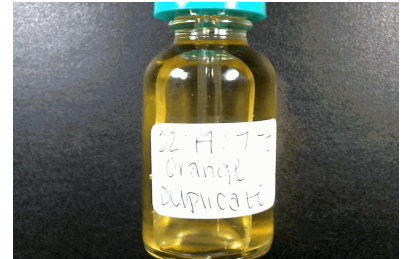


EVIO Labs Medford (pka Kenevir Research)  
 540 East Vilas Road, Suite F, Central Point, OR 97502  
 541-668-7444 / OLCC 010-1001626980D / www.EVIOLabs.com

## Orange Isolate Tincture FD

Silver Lining Xtracts LLC  
 AG-R1049952IHH



Confident Cannabis ID: 1902KR0102.0694

Sample ID: M190231-05

Matrix: Tincture

METRC Batch #:

Batch ID: 02:14:7-5

Sampling Method/SOP: SOP.T.20.010

Batch Size (g):

Date Sampled: 02/25/19 09:00

Unit for Sale: 30mL

Date Accepted: 02/25/19

Harvest/Production Date: 02/22/19

Harvest/Process Lot ID: 02:14:7-5

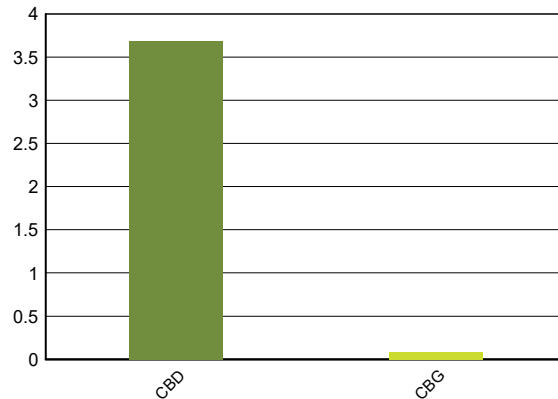
### Cannabinoid Analysis

Date/Time Extracted: 02/27/19 14:44

Analysis Method/SOP: SOP.T.40.020

Date/Time Analyzed: 02/28/19 03:47

Cannabinoids	LOQ(%)	mg/g	% weight	Cannabinoid Profile
<b>Total THC ((THCA*0.877)+Δ)</b>		<b>&lt; LOQ</b>	<b>&lt; LOQ</b>	
<b>Total CBD ((CBDA*0.877)+C)</b>		<b>36.83</b>	<b>3.683</b>	
THCA	0.0100	< LOQ	< LOQ	
delta 9-THC	0.0100	< LOQ	< LOQ	
delta 8-THC	0.0100	< LOQ	< LOQ	
CBDA	0.0100	< LOQ	< LOQ	
CBD	0.0100	36.83	3.683	
CBN	0.0100	< LOQ	< LOQ	
CBG	0.0100	0.82	0.0820	
CBC	0.0100	< LOQ	< LOQ	
Sum of tested Cannabinoids	0.0100	37.65	3.765	



"Total THC" and "Total CBD" are calculated values and are an Oregon reporting requirement (OAR 333-064-0100). For Cannabinoid analysis, only delta 9-THC, THCA, CBD, CBDA are ORELAP accredited analytes. Cannabinoid values reported for plant matter are dry weight corrected; Oregon Water Activity action level is 0.65Aw and Oregon Moisture Content action level is 15%. Samples above limit will be highlighted RED; FD = Field Duplicate; LOQ = Limit of Quantitation.

Ian Riversong  
 Laboratory Director - 3/4/2019

**EVIO Labs Medford (pka Kenevir Research)**  
**540 East Vilas Road, Suite F, Central Point, OR 97502**  
**541-668-7444 / OLCC 010-1001626980D / www.EVIOLabs.com**

## Quality Control

**Batch: M19B102 - SOP.T.30.050 Prep for Cannabinoids**

<b>Blank(M19B102-BLK1)</b>			<b>Extracted: 02/27/19 14:44</b>		<b>Analyzed: 02/28/19 01:45</b>		
<b>Analyte</b>	<b>Result</b>	<b>LOQ</b>	<b>Recovery Limits</b>	<b>Analyte</b>	<b>Result</b>	<b>LOQ</b>	<b>Recovery Limits</b>
THCA	< LOQ	0.0100 (%)	< LOQ	delta 9-THC	< LOQ	0.0100 (%)	< LOQ
delta 8-THC	< LOQ	0.0100 (%)	< LOQ	CBDA	< LOQ	0.0100 (%)	< LOQ
CBD	< LOQ	0.0100 (%)	< LOQ	CBG	< LOQ	0.0100 (%)	< LOQ
CBN	< LOQ	0.0100 (%)	< LOQ	CBC	< LOQ	0.0100 (%)	< LOQ
Sum of tested Cannabinoid:	< LOQ	0.0100 (%)	< LOQ				

<b>LCS(M19B102-BS1)</b>			<b>Extracted: 02/27/19 14:44</b>		<b>Analyzed: 02/28/19 02:03</b>		
<b>Analyte</b>	<b>% Recovery</b>	<b>LOQ</b>	<b>Recovery Limits</b>	<b>Analyte</b>	<b>% Recovery</b>	<b>LOQ</b>	<b>Recovery Limits</b>
THCA	97.8	(%)	70-130	delta 9-THC	103	(%)	70-130
CBDA	102	(%)	70-130	CBD	103	(%)	70-130



Ian Riversong  
 Laboratory Director - 3/4/2019