

EVIO Labs Medford (pka Kenevir Research)  
 540 East Vilas Road, Suite F, Central Point, OR 97502  
 541-668-7444 / OLCC 010-1001626980D / www.EVIOLabs.com

**SG Orange Blossom Honey**  
*Silver Lining Xtracts LLC*  
 Info Only



Confident Cannabis ID: 1905KR0075.2020

Sample ID: M190649-03

Matrix: Ingestible

METRC Batch #:

Sampling Method/SOP: SOP.T.20.010

Date Sampled: 05/16/19 09:00

Date Accepted: 05/16/19

Harvest/Process Lot ID:

Batch ID: 05:15:7-00

Batch Size (g):

Unit for Sale: 100.8 g

Harvest/Production Date: 05/13/19

## Cannabinoid Analysis

**FOR INFORMATIONAL USE ONLY - NOT FOR REGULATORY PURPOSES**

Date/Time Extracted: 05/23/19 11:15

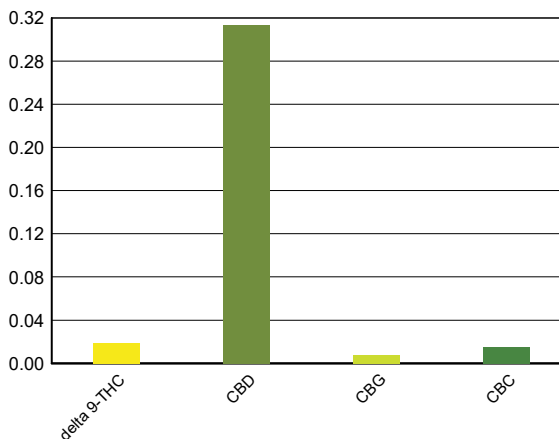
Analysis Method/SOP: SOP.T.40.020

Date/Time Analyzed: 05/24/19 16:53

Sample mass: 100.8g/ Unit

Cannabinoids	LOQ(%)	mg/g	mg/unit	Cannabinoid Profile
<b>Total THC</b> <small>((THCA*0.877)+Δ9THC)</small>		<b>&lt; LOQ</b>	<b>&lt; LOQ</b>	
<b>Total CBD</b> <small>((CBDA*0.877)+CBD)</small>		<b>3.14</b>	<b>317</b>	

THCA	0.0500	< LOQ	< LOQ
delta 9-THC	0.0500	< LOQ	< LOQ
delta 8-THC	0.0500	< LOQ	< LOQ
CBDA	0.0500	< LOQ	< LOQ
CBD	0.0500	3.14	317
CBN	0.0500	< LOQ	< LOQ
CBG	0.0500	< LOQ	< LOQ
CBC	0.0500	< LOQ	< LOQ
Sum of tested Cannabinoids	0.0500	3.56	359



"Total THC" and "Total CBD" are calculated values and are an Oregon reporting requirement (OAR 333-064-0100). For Cannabinoid analysis, only delta 9-THC, THCA, CBD, CBDA are ORELAP accredited analytes. Cannabinoid values reported for plant matter are dry weight corrected; Oregon Water Activity action level is 0.65Aw and Oregon Moisture Content action level is 15%. Samples above limit will be highlighted RED; FD = Field Duplicate; LOQ = Limit of Quantitation.

Ian Riversong  
 Laboratory Director - 5/28/2019

EVIO Labs Medford (pka Kenevir Research)  
 540 East Vilas Road, Suite F, Central Point, OR 97502  
 541-668-7444 / OLCC 010-1001626980D / www.EVIOLabs.com

## Quality Control

**Batch: M19E113 - SOP.T.30.050 Prep for Cannabinoids**

Blank(M19E113-BLK1)			Extracted: 05/23/19 11:15		Analyzed: 05/24/19 09:14		
Analyte	Result	LOQ	Recovery Limits	Analyte	Result	LOQ	Recovery Limits
THCA	< LOQ	0.0500 (%)	< LOQ	delta 9-THC	< LOQ	0.0500 (%)	< LOQ
delta 8-THC	< LOQ	0.0500 (%)	< LOQ	CBDA	< LOQ	0.0500 (%)	< LOQ
CBD	< LOQ	0.0500 (%)	< LOQ	CBG	< LOQ	0.0500 (%)	< LOQ
CBN	< LOQ	0.0500 (%)	< LOQ	CBC	< LOQ	0.0500 (%)	< LOQ
Sum of tested Cannabinoid:	< LOQ	0.0500 (%)	< LOQ				

LCS(M19E113-BS1)			Extracted: 05/23/19 11:15		Analyzed: 05/24/19 09:31		
Analyte	% Recovery	LOQ	Recovery Limits	Analyte	% Recovery	LOQ	Recovery Limits
THCA	108	(%)	70-130	delta 9-THC	96.7	(%)	70-130
CBDA	113	(%)	70-130	CBD	90.2	(%)	70-130



Ian Riversong  
 Laboratory Director - 5/28/2019