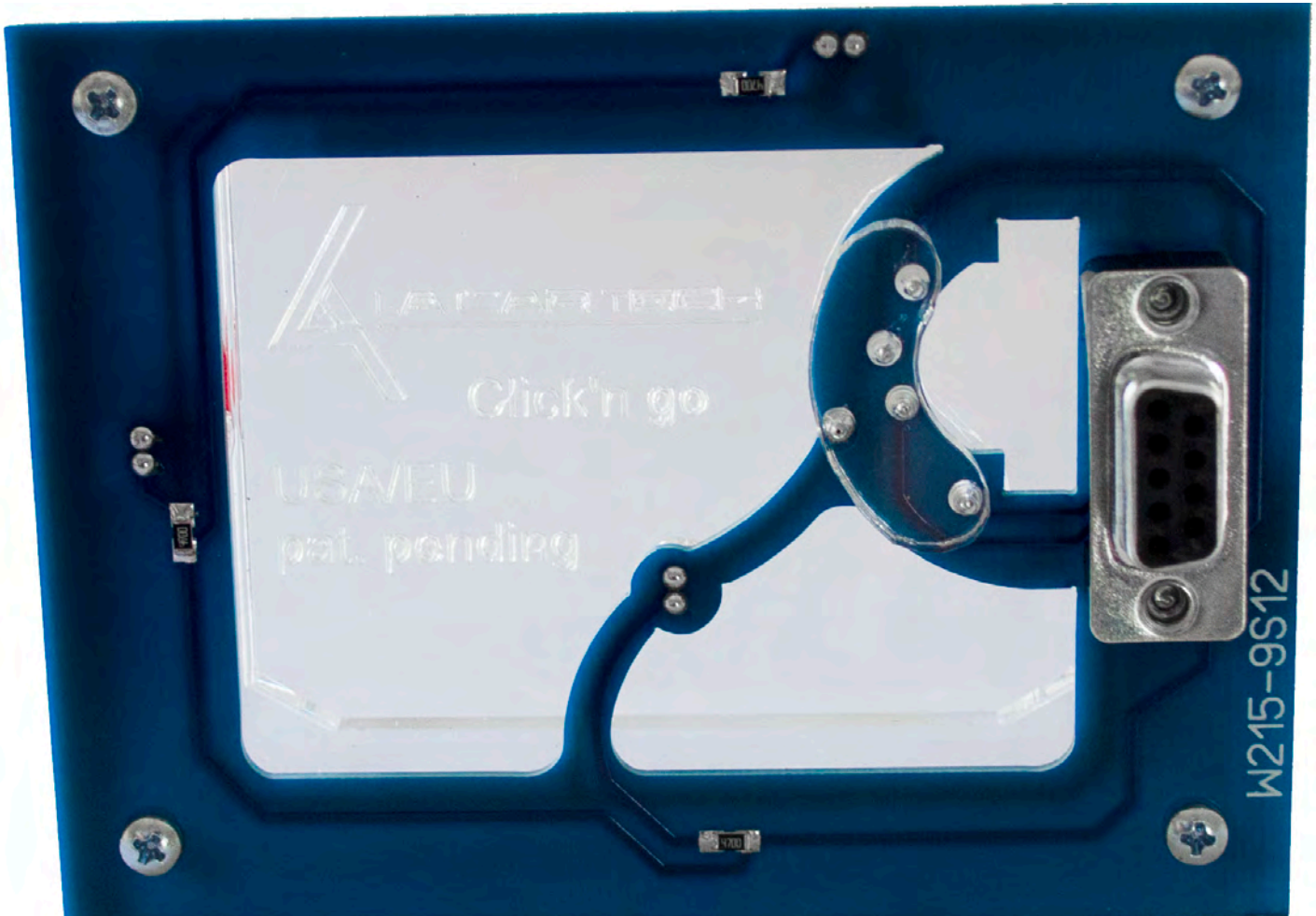


Click'n Go

W215 9S12 Click'n Go Adapter

Works with MBProg Programmer. No soldering required.



www.mbkeyprog.com



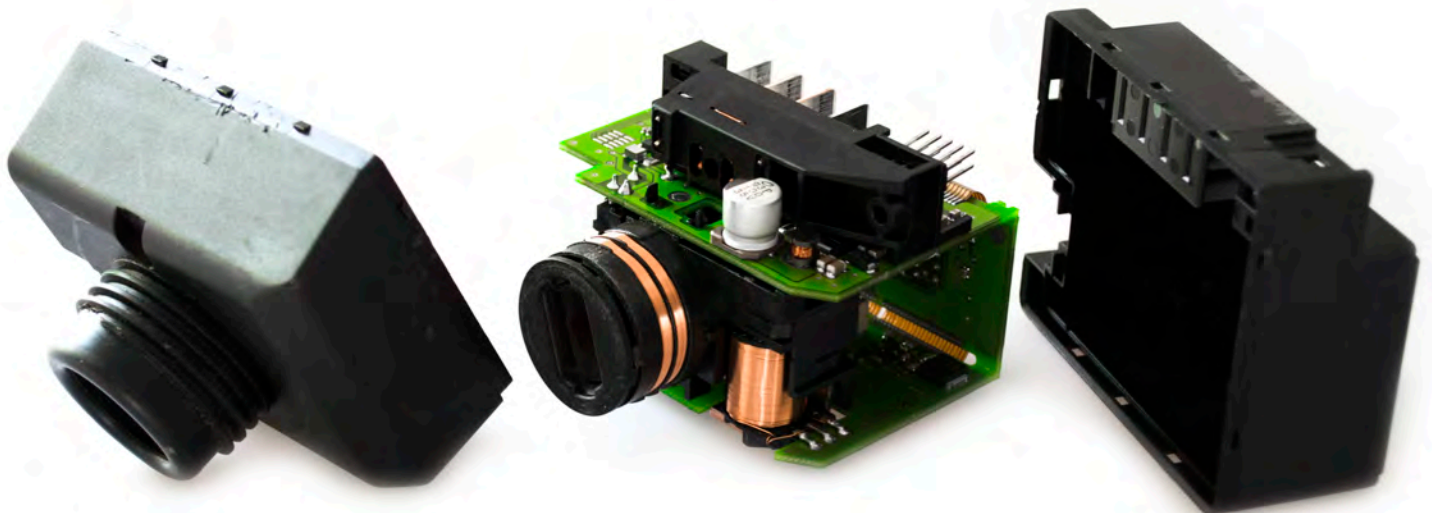
+48 517 443 433
+48 22 724 99 96
info@mbkeyprog.com

W215 (9S12)



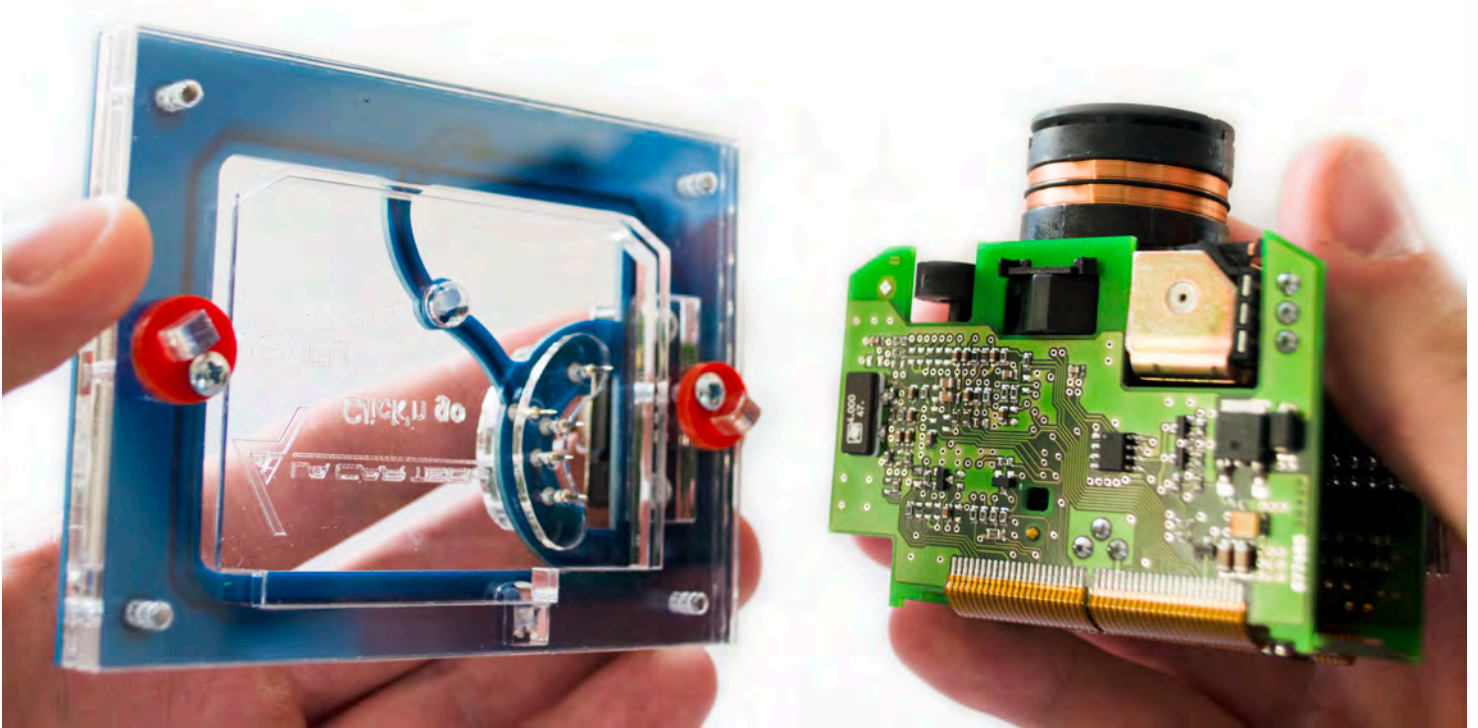
How to connect

Carefully open by pushing in the EIS back body tabs.

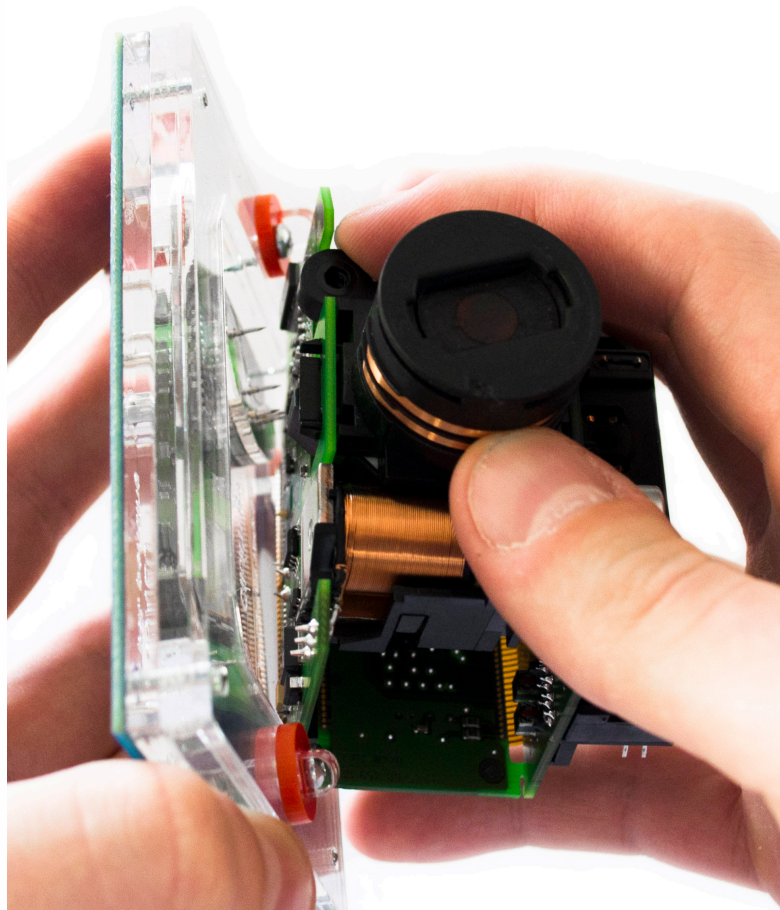


W215 (9S12)

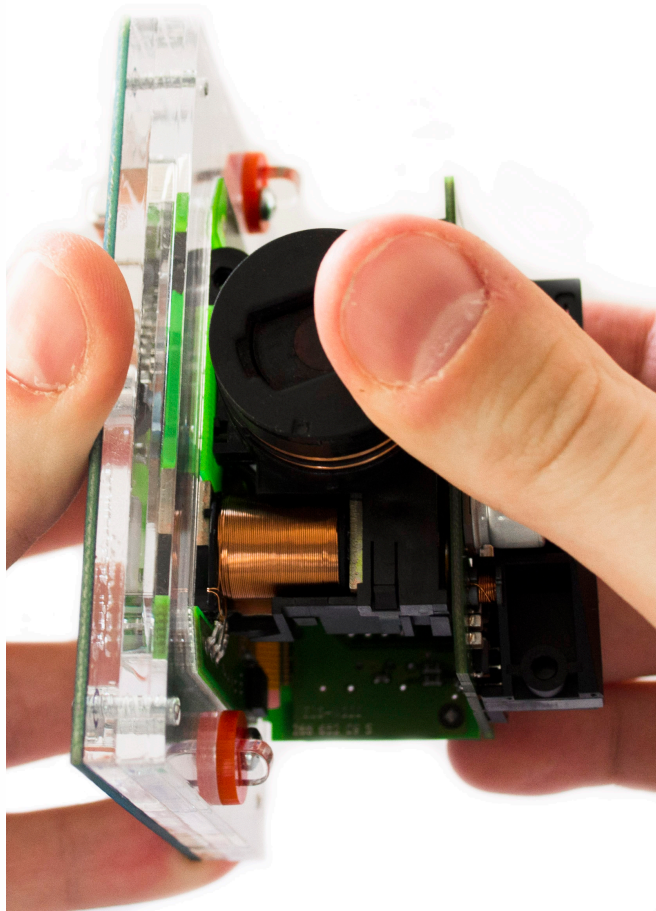
Match the top of the EIS board with top of Click'n Go adapter.



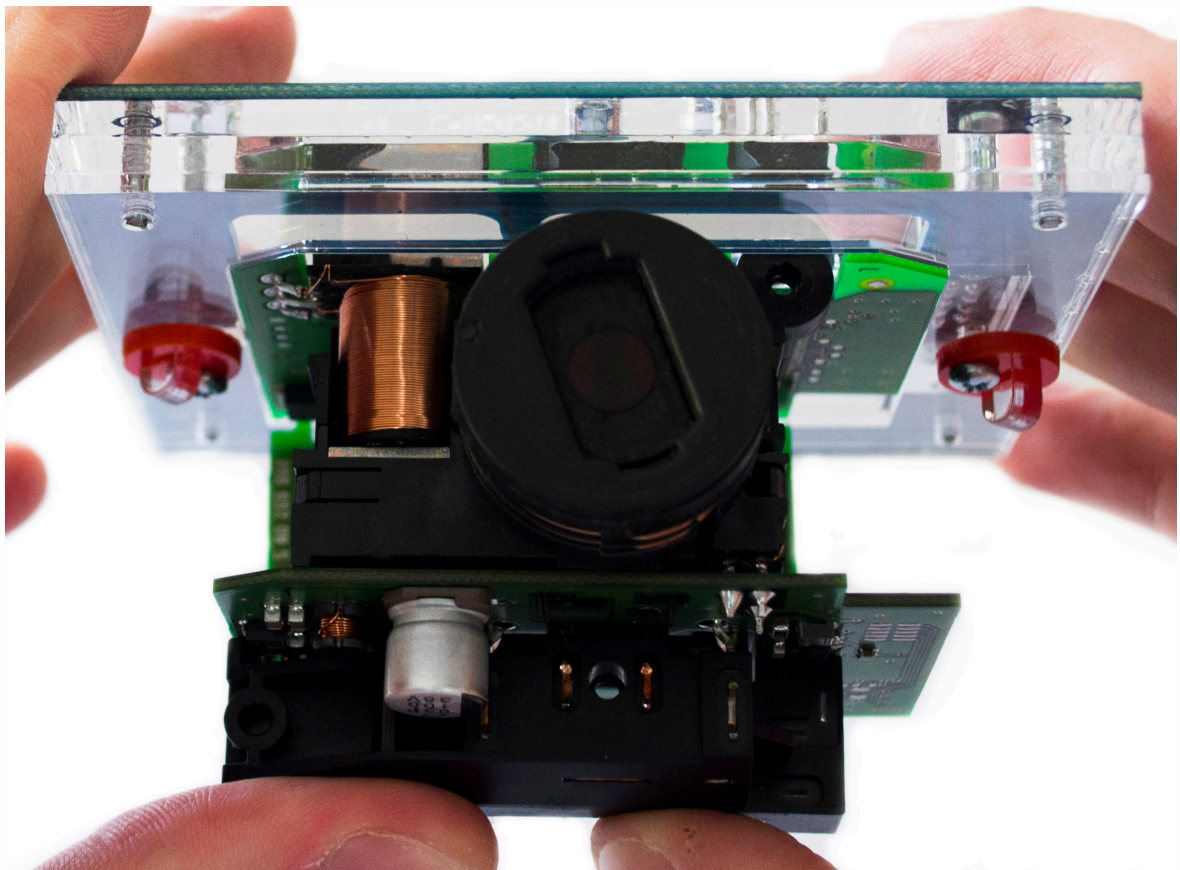
Mount the EIS board on the Click'n Go Adapter.



W215 (9S12)

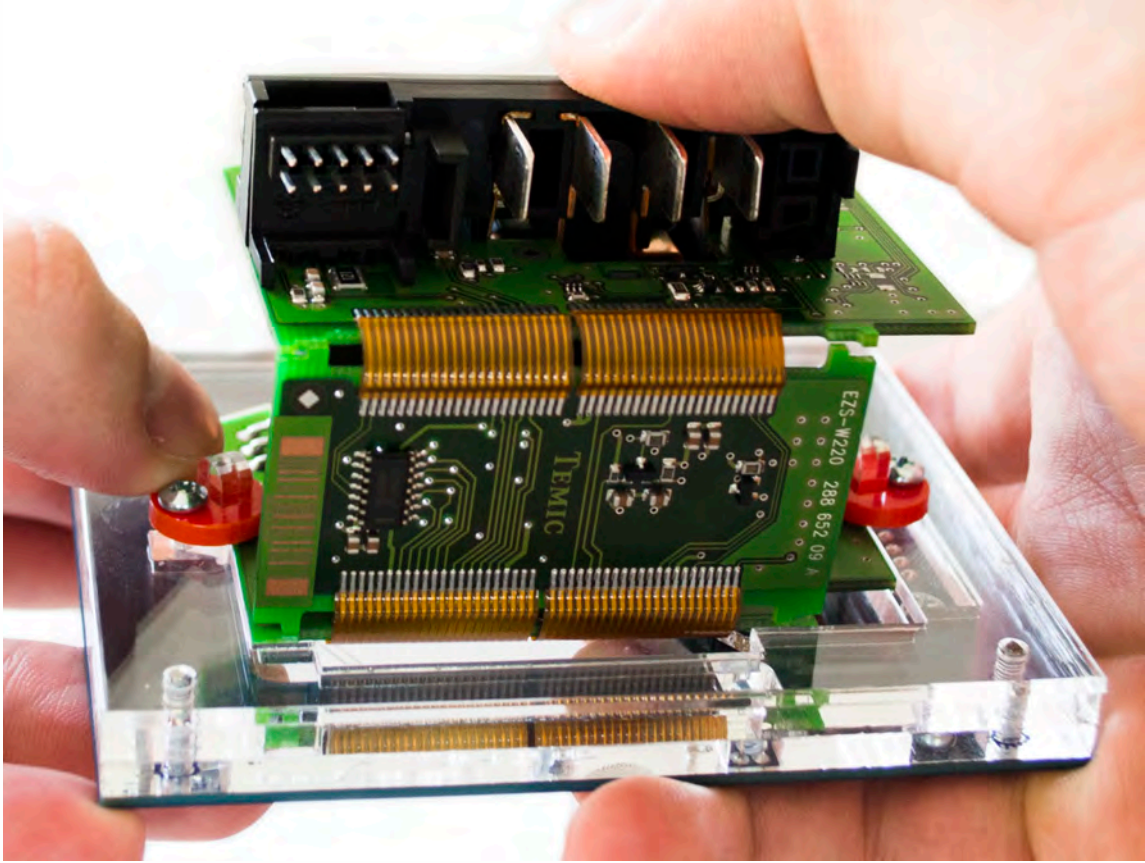


Carefully push down the EIS on to Click'n Go adapter.



W215 (9S12)

Secure the board by turning the locks over the EIS board.

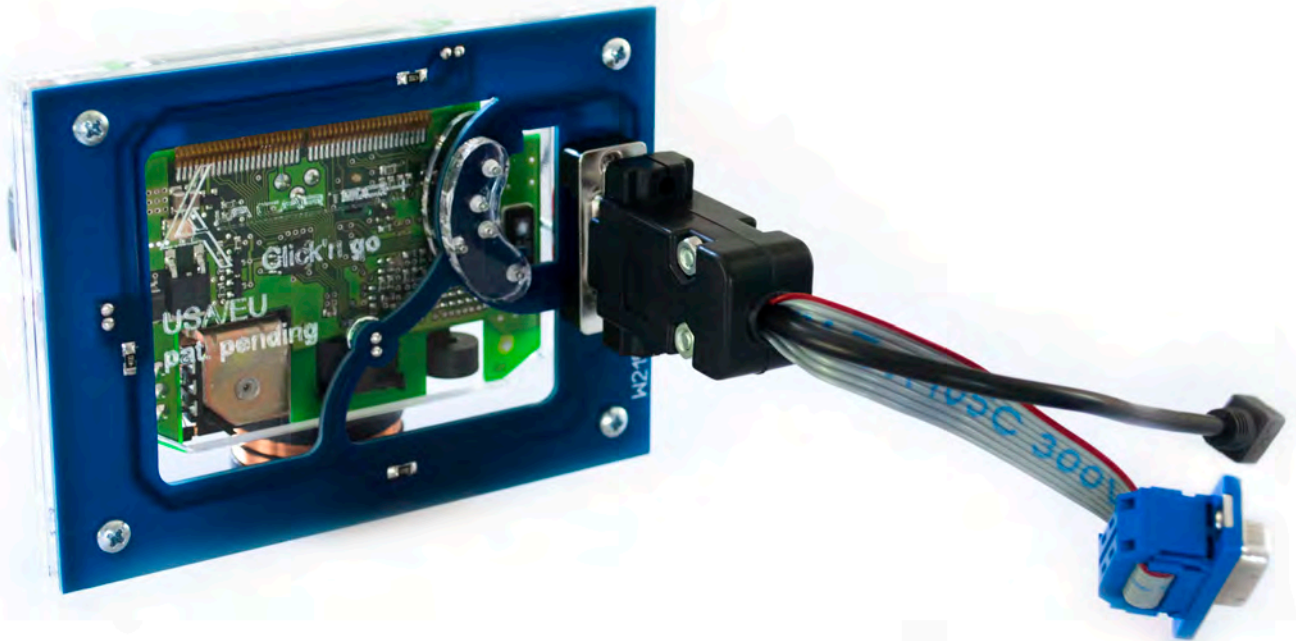


Make sure that EIS is mounted correctly on the Click'n Go adapter.

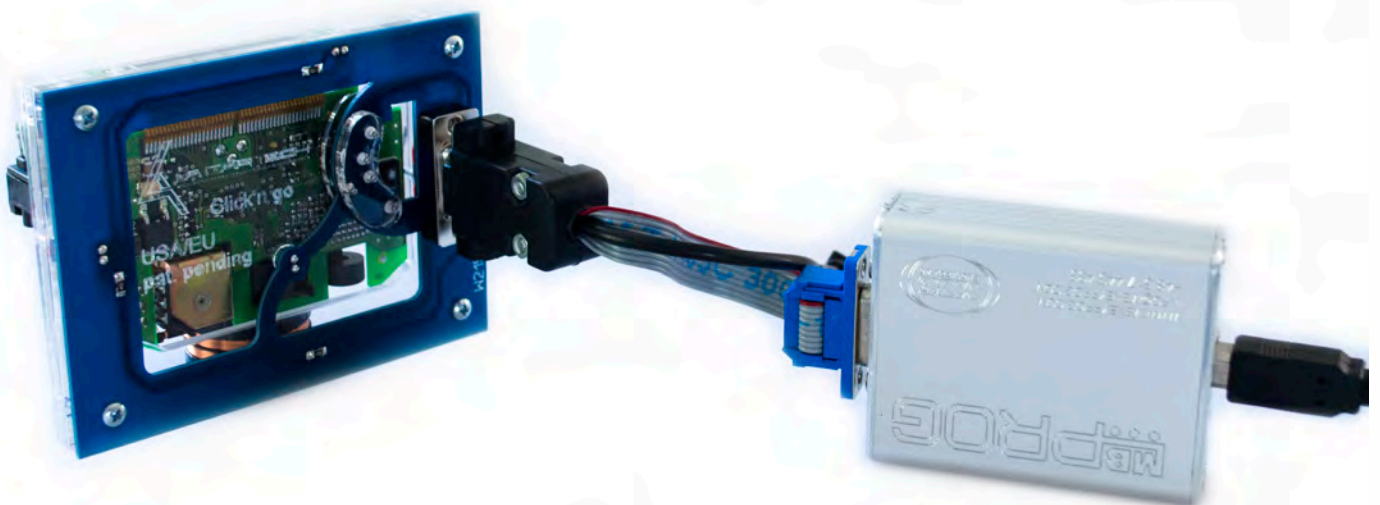


W215 (9S12)

Connect Click'n Go cable to Click'n Go adapter.



Connect Click'n Go cable to MBProg.
Connect MBProg USB cable to PC and MBProg.



W215 (9S12)



How to read

Open MBProg software.

Check bottom right corner if your device is correctly connected.

Now click Chip button.

MultiProg v1.40.5.6

File Edit Device Tools Help Exit

READ Write VERIFY ERASE **CHIP** TEST PIN Usecure Security Help User manual

Selected Device: None

	00	01	02	03	04	05	06	07	08	09	0A	0B	0C	0D	0E	0F	01	2	3	4	5	6	7	8	9	A	B	C	D	E	F
0x00	FF	FF	FF	FF	FF	FF	FF	FF	FF	FF	FF	FF	FF	FF	FF	FF
0x10	FF	FF	FF	FF	FF	FF	FF	FF	FF	FF	FF	FF	FF	FF	FF	FF
0x20	FF	FF	FF	FF	FF	FF	FF	FF	FF	FF	FF	FF	FF	FF	FF	FF
0x30	FF	FF	FF	FF	FF	FF	FF	FF	FF	FF	FF	FF	FF	FF	FF	FF
0x40	FF	FF	FF	FF	FF	FF	FF	FF	FF	FF	FF	FF	FF	FF	FF	FF
0x50	FF	FF	FF	FF	FF	FF	FF	FF	FF	FF	FF	FF	FF	FF	FF	FF
0x60	FF	FF	FF	FF	FF	FF	FF	FF	FF	FF	FF	FF	FF	FF	FF	FF
0x70	FF	FF	FF	FF	FF	FF	FF	FF	FF	FF	FF	FF	FF	FF	FF	FF
0x80	FF	FF	FF	FF	FF	FF	FF	FF	FF	FF	FF	FF	FF	FF	FF	FF
0x90	FF	FF	FF	FF	FF	FF	FF	FF	FF	FF	FF	FF	FF	FF	FF	FF
0xA0	FF	FF	FF	FF	FF	FF	FF	FF	FF	FF	FF	FF	FF	FF	FF	FF
0xB0	FF	FF	FF	FF	FF	FF	FF	FF	FF	FF	FF	FF	FF	FF	FF	FF
0xC0	FF	FF	FF	FF	FF	FF	FF	FF	FF	FF	FF	FF	FF	FF	FF	FF
0xD0	FF	FF	FF	FF	FF	FF	FF	FF	FF	FF	FF	FF	FF	FF	FF	FF
0xE0	FF	FF	FF	FF	FF	FF	FF	FF	FF	FF	FF	FF	FF	FF	FF	FF
0xF0	FF	FF	FF	FF	FF	FF	FF	FF	FF	FF	FF	FF	FF	FF	FF	FF

Vcc= 5.0

Device Info

Device:

Size:

MCU ID:

Program Adres Range

Start Adres: En.

End Adres:

Programmer Information

SWA 1.94

SWB 1015

SWA.B v212

Upd.Status Ok

Date SW

SN : 5904855

Name JtagDS

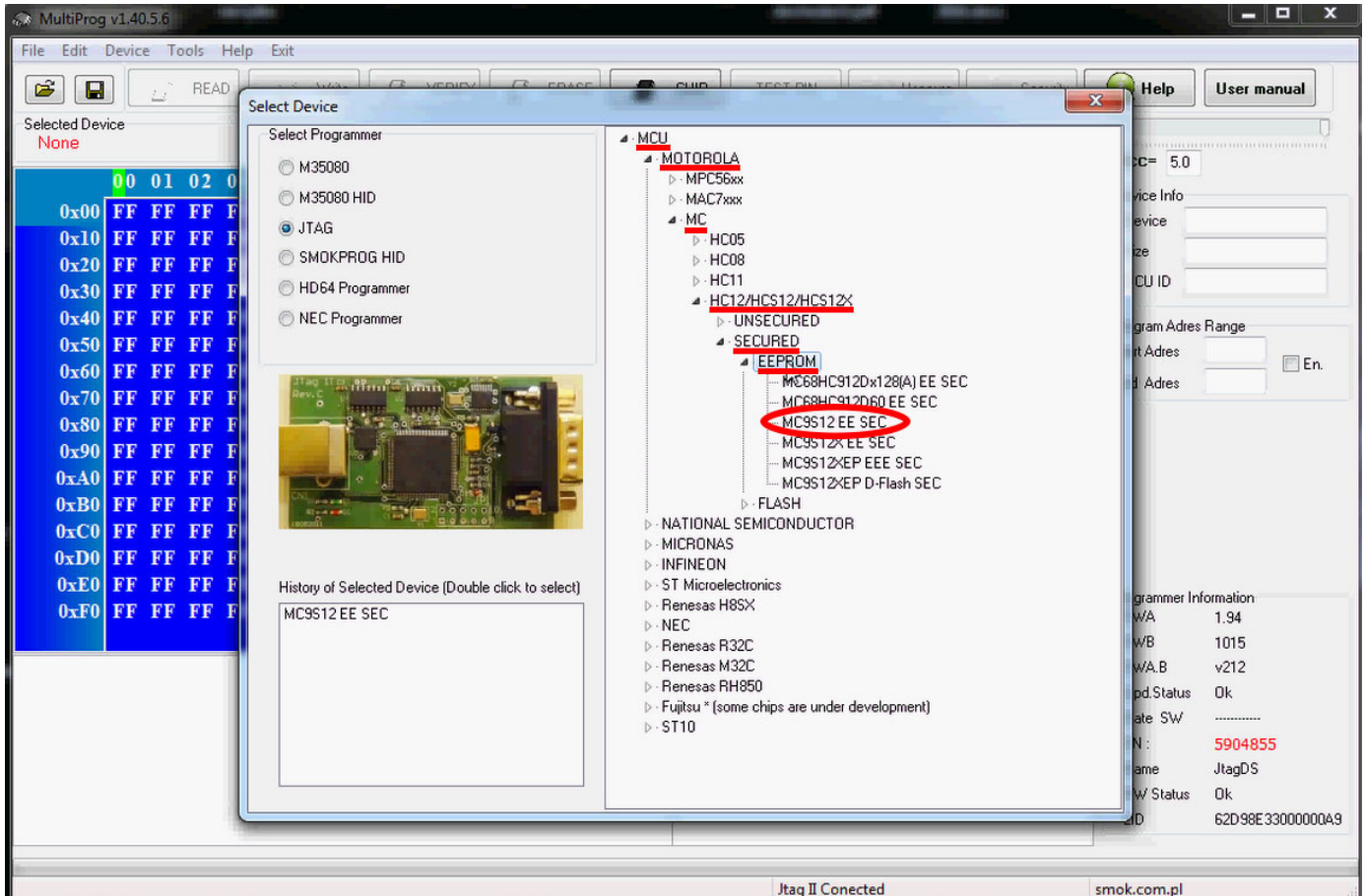
HW Status Ok

LID 62D98E3300000A9

Jtag II Conected smok.com.pl

W215 (9S12)

Make sure that JTAG is selected as a working programmer.
Select MOTOROLA > MC > HC12/HCS12/HCS12X > SECURED > EEPROM
and double click on MC9S12 EE SEC option as seen in the red circle.



W215 (9S12)

Now click on Read button.

The screenshot shows the MultiProg v1.40.5.6 software interface. The 'Read' button, represented by a green upward-pointing arrow, is circled in red. Below the toolbar, the selected device is identified as 'MC9S12 EE SEC'. The main window displays a memory dump table with the following structure:

Address	00	01	02	03	04	05	06	07	08	09	0A	0B	0C	0D	0E	0F	01	2	3	4	5	6	7	8	9	A	B	C	D	E	F
0x000	FF	FF	FF	FF	FF	FF	FF	FF	FF	FF	FF	FF	FF	FF	FF	FF	FF	FF	FF	FF	FF	FF	FF	FF	FF	FF	FF	FF	FF	FF	FF
0x010	FF	FF	FF	FF	FF	FF	FF	FF	FF	FF	FF	FF	FF	FF	FF	FF	FF	FF	FF	FF	FF	FF	FF	FF	FF	FF	FF	FF	FF	FF	FF
0x020	FF	FF	FF	FF	FF	FF	FF	FF	FF	FF	FF	FF	FF	FF	FF	FF	FF	FF	FF	FF	FF	FF	FF	FF	FF	FF	FF	FF	FF	FF	FF
0x030	FF	FF	FF	FF	FF	FF	FF	FF	FF	FF	FF	FF	FF	FF	FF	FF	FF	FF	FF	FF	FF	FF	FF	FF	FF	FF	FF	FF	FF	FF	FF
0x040	FF	FF	FF	FF	FF	FF	FF	FF	FF	FF	FF	FF	FF	FF	FF	FF	FF	FF	FF	FF	FF	FF	FF	FF	FF	FF	FF	FF	FF	FF	FF
0x050	FF	FF	FF	FF	FF	FF	FF	FF	FF	FF	FF	FF	FF	FF	FF	FF	FF	FF	FF	FF	FF	FF	FF	FF	FF	FF	FF	FF	FF	FF	FF
0x060	FF	FF	FF	FF	FF	FF	FF	FF	FF	FF	FF	FF	FF	FF	FF	FF	FF	FF	FF	FF	FF	FF	FF	FF	FF	FF	FF	FF	FF	FF	FF
0x070	FF	FF	FF	FF	FF	FF	FF	FF	FF	FF	FF	FF	FF	FF	FF	FF	FF	FF	FF	FF	FF	FF	FF	FF	FF	FF	FF	FF	FF	FF	FF
0x080	FF	FF	FF	FF	FF	FF	FF	FF	FF	FF	FF	FF	FF	FF	FF	FF	FF	FF	FF	FF	FF	FF	FF	FF	FF	FF	FF	FF	FF	FF	FF
0x090	FF	FF	FF	FF	FF	FF	FF	FF	FF	FF	FF	FF	FF	FF	FF	FF	FF	FF	FF	FF	FF	FF	FF	FF	FF	FF	FF	FF	FF	FF	FF
0x0A0	FF	FF	FF	FF	FF	FF	FF	FF	FF	FF	FF	FF	FF	FF	FF	FF	FF	FF	FF	FF	FF	FF	FF	FF	FF	FF	FF	FF	FF	FF	FF
0x0B0	FF	FF	FF	FF	FF	FF	FF	FF	FF	FF	FF	FF	FF	FF	FF	FF	FF	FF	FF	FF	FF	FF	FF	FF	FF	FF	FF	FF	FF	FF	FF
0x0C0	FF	FF	FF	FF	FF	FF	FF	FF	FF	FF	FF	FF	FF	FF	FF	FF	FF	FF	FF	FF	FF	FF	FF	FF	FF	FF	FF	FF	FF	FF	FF
0x0D0	FF	FF	FF	FF	FF	FF	FF	FF	FF	FF	FF	FF	FF	FF	FF	FF	FF	FF	FF	FF	FF	FF	FF	FF	FF	FF	FF	FF	FF	FF	FF
0x0E0	FF	FF	FF	FF	FF	FF	FF	FF	FF	FF	FF	FF	FF	FF	FF	FF	FF	FF	FF	FF	FF	FF	FF	FF	FF	FF	FF	FF	FF	FF	FF
0x0F0	FF	FF	FF	FF	FF	FF	FF	FF	FF	FF	FF	FF	FF	FF	FF	FF	FF	FF	FF	FF	FF	FF	FF	FF	FF	FF	FF	FF	FF	FF	FF
0x100	FF	FF	FF	FF	FF	FF	FF	FF	FF	FF	FF	FF	FF	FF	FF	FF	FF	FF	FF	FF	FF	FF	FF	FF	FF	FF	FF	FF	FF	FF	FF

The right-hand panel of the software shows the following information:

- Vcc= 5.0
- Device Info: Device, Size, MCU ID
- Program Adres Range: Start Adres 000000, End Adres 0007FF
- Programmer Information: SWA 1.94, SWB 1015, SWA.B v212, Upd.Status Ok, Date SW -----, SN: 5904855, Name JtagDS, HW Status Ok, LID 62D98E3300000A9

At the bottom of the window, the status bar indicates 'Jtag II Connected' and 'smok.com.pl'.

W215 (9S12)

The EIS reading process is done.

MultiProg v1.40.6.1

File Edit Device Tools Help Exit

READ Write VERIFY ERASE CHIP TEST PIN Usecure Security Help User manual

Selected Device
MC9S12 EE SEC

Address	00	01	02	03	04	05	06	07	08	09	0A	0B	0C	0D	0E	0F	Hex	ASCII
0x000	33	03	FF	FF	1A	51	FF	FF	60	00	FF	FF	FF	FF	FF	FF	3.....Q.....	
0x010	02	0C	FF	FF	40	AC	FF	FF	0E	06	FF	FF	0F	00	FF	FF@.....	
0x020	00	00	FF	FF	00	00	FF	FF	01	00	FF	FF	01	00	FF	FFU.....	
0x030	01	01	FF	FF	01	55	FF	FF	AA	02	FF	FF	02	00	FF	FF5.....	
0x040	2B	16	FF	FF	14	2B	FF	FF	16	14	FF	FF	2B	16	FF	FFWD..B2..20..	
0x050	14	FF	FF	FF	A4	AA	FF	FF	00	FF	FF	FF	01	FF	FF	FF12..52..A4..55..	
0x060	01	FF	FF	FF	57	44	FF	FF	42	32	FF	FF	32	30	FF	FF65..8.....Z..	
0x070	31	32	FF	FF	35	32	FF	FF	41	34	FF	FF	35	35	FF	FF	
0x080	36	35	FF	FF	38	FF	FF	FF	00	FF	FF	FF	00	5A	FF	FF	
0x090	00	FF	FF	FF	01	FF	FF	FF	01	FF	FF	FF	01	FF	FF	FF	
0x0A0	02	FF	FF	FF	00	FF	FF	FF	0F	FF	FF	FF	00	FF	FF	FF	
0x0B0	00	01	FF	FF	FF	FF	FF	FF	FF	FF	FF	FF	FF	FF	FF	FF	
0x0C0	FF	FF	FF	FF	FF	FF	FF	FF	FF	FF	FF	FF	FF	FF	FF	FF	
0x0D0	FF	FF	FF	FF	FF	FF	FF	FF	FF	FF	FF	FF	FF	FF	FF	FF	
0x0E0	FF	FF	FF	FF	FF	FF	FF	FF	FF	FF	FF	FF	FF	FF	FF	FF	
0x0F0	FF	FF	FF	FF	FF	FF	FF	FF	FF	FF	FF	FF	FF	FF	FF	FF	
0x100	CF	FF	FF	FF	00	FF	FF	FF	6A	F5	FF	FF	46	BE	FF	FF	

Read EE MC9S12 EE SEC
Read ID MCU ok
MCU ID :0101
Memory Config:1380
Unsecuring...
f=136, t1=1, t2=28
Unsecure Ok
Reading EE MC9S12 Secured...
Read OK
Saved backup File : C:\Users\PatrykMBE\Documents\Temp\Temp24.bin

Read OK

Jtag II Connected

smok.com.pl

Vcc= 5.0

Device Info
Device: 9s12DG128
Size: 2048
MCU ID: 0101

Program Adres Range
Start Adres: 000000
End Adres: 0007FF

Programmer Information
SWA: 1.95
SWB: 1015
SWA.B: v212
Upd.Status: Ok
Date SW:

SN: 5904855
Name: JtagDS
HW Status: Ok
LID: 62D98E3300000A9



www.mbkeyprog.com



+48 517 443 433
+48 22 724 99 96
info@mbkeyprog.com