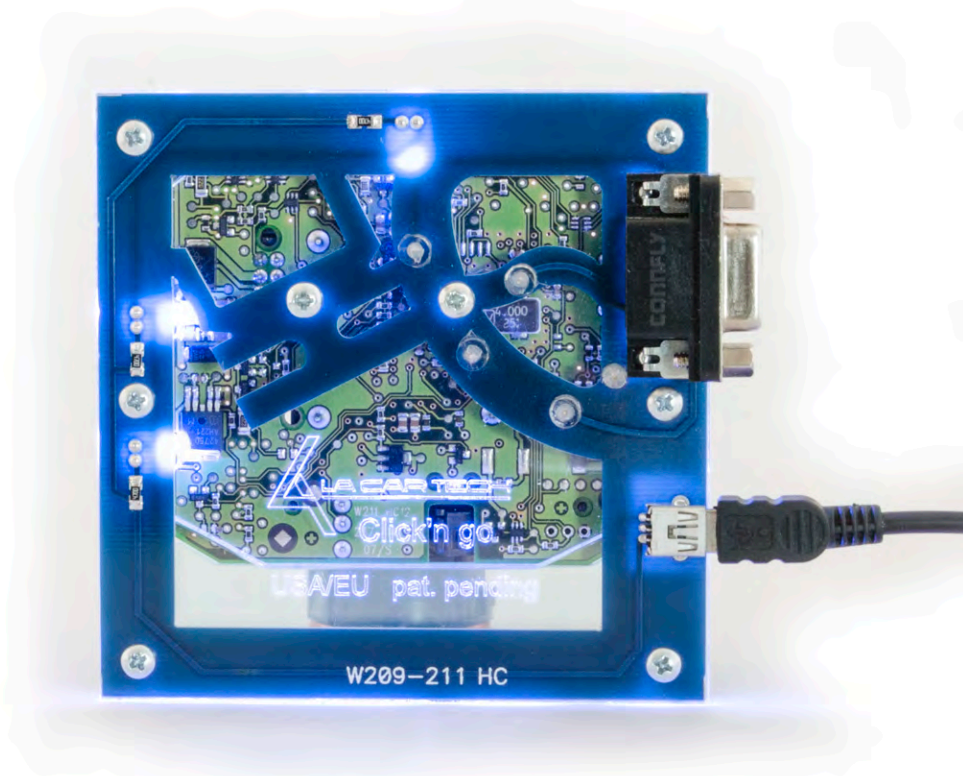


Click'n Go

W209-211 HC Click'n Go Adapter

Works with MBProg Programmer. No soldering required.



Check the PCB, in the yellow circle you will see what type of MCU you are working with. To use this Click'n Go adapter be sure you see W211_HC12.



www.mbkeyprog.com



+48 517 443 433
+48 22 724 99 96
info@mbkeyprog.com

W209/W211 HC



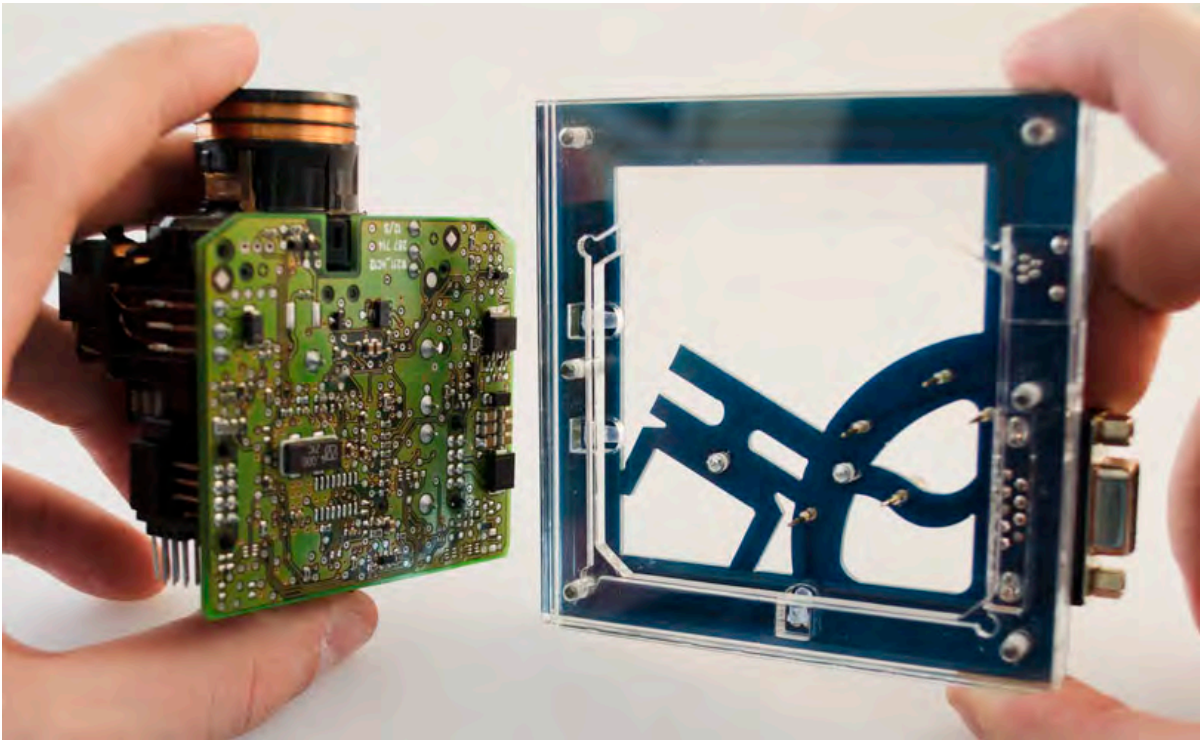
How to connect

Carefully open by pushing in the EIS back body tabs.



W209/W211 HC

Match the top of the EIS board with top of Click'n Go adapter.

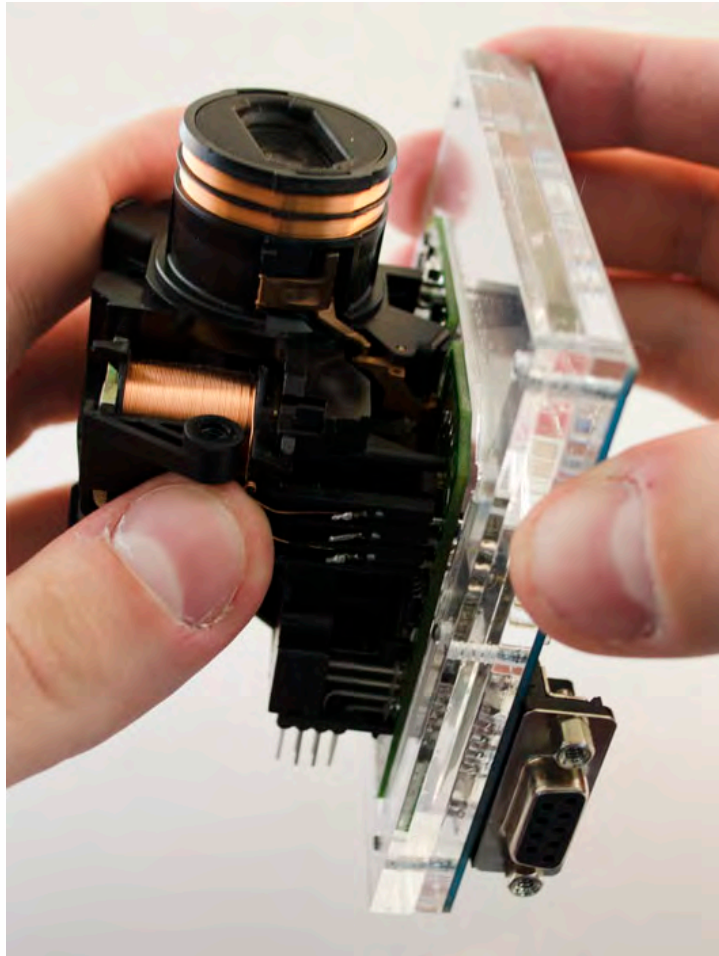


Carefully put the bottom of EIS into Click'n Go adapter.

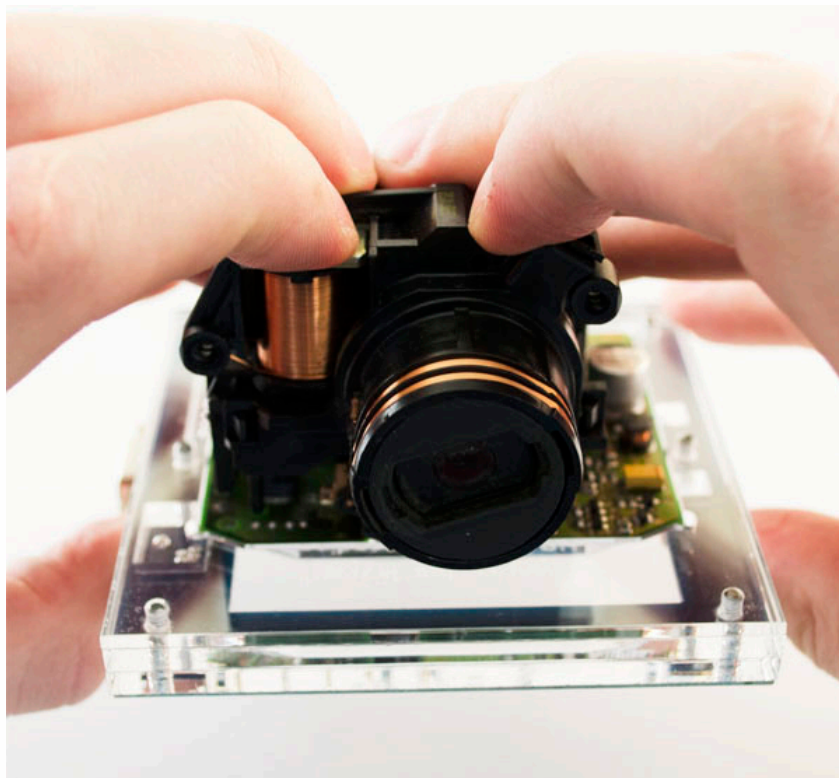


W209/W211 HC

Mount the EIS board on the Click'n Go Adapter.



Carefully push down the EIS on to Click'n Go adapter.



W209/W211 HC

Make sure that Click'n Go adapter is mounted correctly on the EIS.

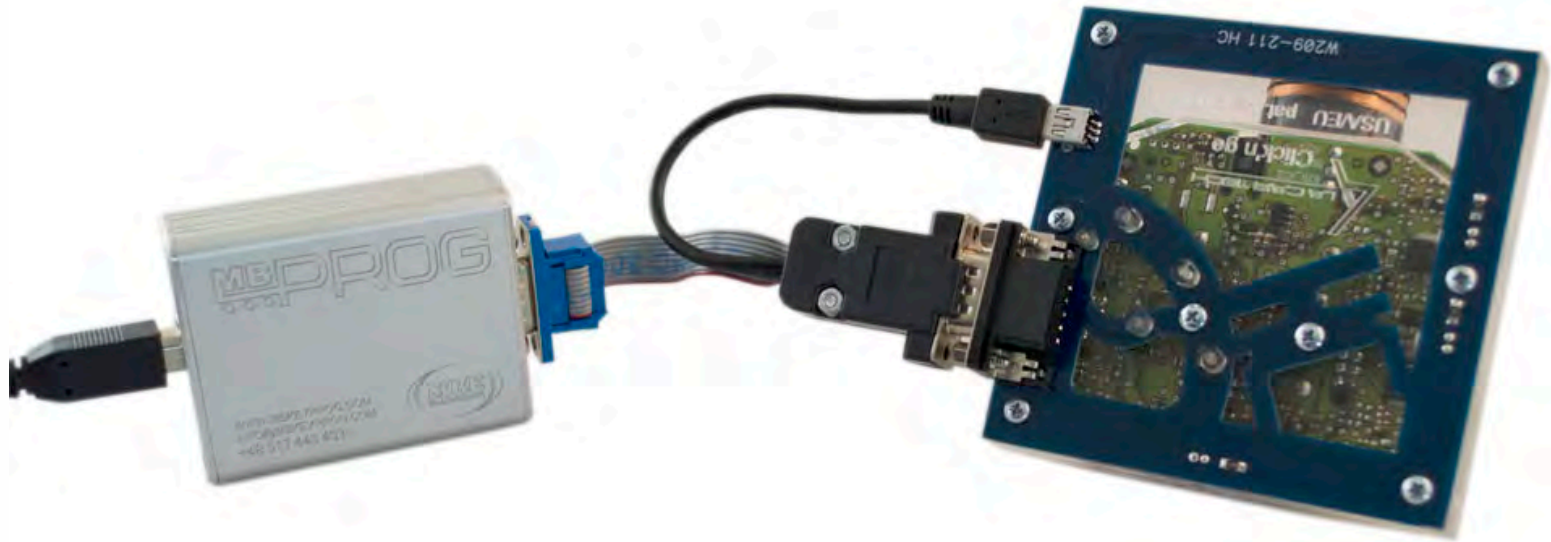


Connect both cables to Click'n Go adapter.



W209/W211 HC

Connect MBProg 2 Click'n Go cable to MBProg.
Connect USB cable to MBProg and PC.



W209/W211 HC

How to read

Open MBProg software.

Check bottom right corner if your device is correctly connected.

Now click Chip button.

The screenshot shows the MultiProg v1.40.5.6 software interface. The 'CHIP' button in the top toolbar is circled in red. The main window displays a memory dump table with columns for addresses (00-0F, 0-15) and hex values (FF). The 'Programmer Information' panel in the bottom right is also circled in red, showing the following details:

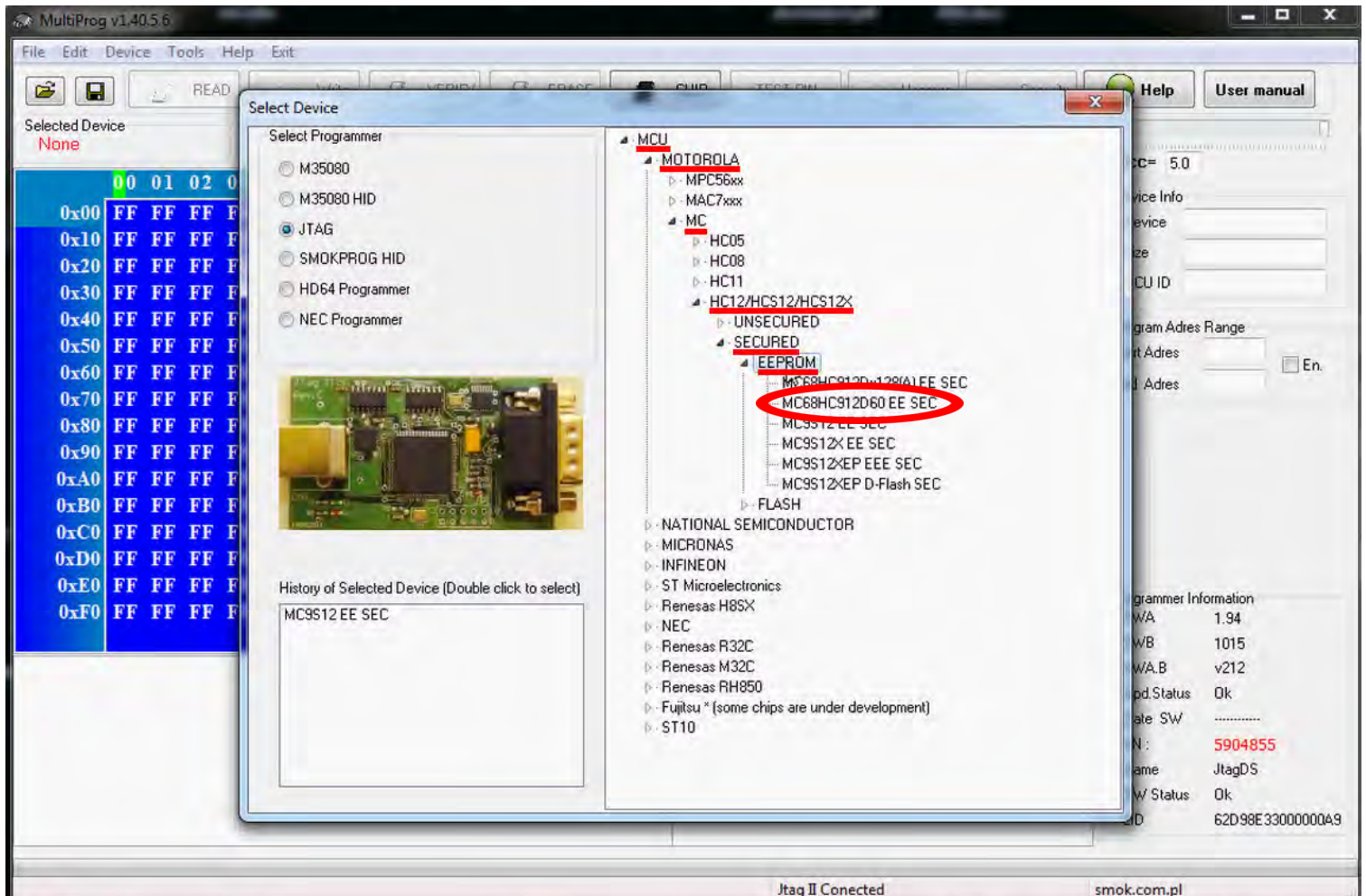
Programmer Information	
SWA	1.94
SWB	1015
SWA.B	v212
Upd.Status	Ok
Date SW	-----
SN :	5904855
Name	JtagDS
HW Status	Ok
LID	62D98E33000000A

At the bottom of the window, the status bar shows 'Jtag II Conected' and 'smok.com.pl'.

W209/W211 HC

Make sure that JTAG is selected in programmer software.

Select MOTOROLA > MC > HC12/HCS12/HCS12X > SECURED > EEPROM
and double click on MC68HC912D60 EE SEC option as seen in the red circle.



W209/W211 HC

The EIS reading process is done.

If you can see VIN# it has been read correctly.

MultiProg v1.40.5.6

File Edit Device Tools Help Exit

READ Write VERIFY ERASE CHIP TEST PIN Usecure Security Help User manual

Selected Device: MC68HC912D60 EE SEC

00	01	02	03	04	05	06	07	08	09	0A	0B	0C	0D	0E	0F	0123456789ABCDEF	
0x000	FF	FF	00	5A	15	02	EB	F9	3E	00	02	08	29	FF	FF	FF	...
0x010	0F	FF	FF	FF	00	FF	00	00	00	01	00	00	00	00	00	00	...
0x020	3F	4E	00	3F	4E	00	3F	4E	00	FF	FF	FF	FF	FF	A4	AA	7N. ?N. ?N.
0x030	2E	00	00	00	FF	FF	00	FF	57	44	42	32	31	31	30	31	... WDB21101
0x040	36	32	41	31	35	34	32	39	30	FF	FF	FF	FF	FF	FF	FF	61A154290.....
0x050	FF	FF	FF	FF	FF	FF	FF	FF	FF	FF	FF	FF	FF	FF	02	FF	...
0x060	0F	FF	01	FF	03	00	00	FF	00	FF	00	FF	FF	FF	FF	FF	...
0x070	FF	FF	FF	FF	FF	FF	FF	FF	FF	FF	FF	FF	FF	FF	FF	FF	...
0x080	FD	EF	FF	FF	FF	FF	FF	FF	FF	FF	FF	FF	FF	FF	FF	FF	...
0x090	FF	FF	FF	FF	FF	FF	FF	FF	FF	FF	FF	FF	FF	FF	FF	FF	...
0x0A0	FF	FF	FF	FF	FF	FF	FF	FF	FF	FF	FF	FF	FF	FF	FF	FF	...
0x0B0	FF	FF	FF	FF	FF	FF	FF	FF	FF	FF	FF	FF	FF	FF	FF	FF	...
0x0C0	FF	FF	FF	FF	FF	FF	FF	FF	FF	FF	FF	FF	FF	FF	FF	FF	...
0x0D0	FF	FF	FF	FF	FF	FF	FF	FF	FF	FF	FF	FF	FF	FF	FF	FF	...
0x0E0	FF	FF	FF	FF	FF	FF	FF	FF	FF	FF	FF	FF	FF	FF	FF	FF	...
0x0F0	FF	FF	FF	FF	FF	FF	FF	FF	FF	FF	FF	FF	FF	FF	FF	FF	...
0x100	CF	FF	01	FF	FF	FF	68	16	27	9D	EB	20	00	00	27	AD	...

Read EEprom HC12 Secure
Unsecuring...
f=96, t1=66, t2=21
Unsec No.6
Unsecure Ok
MC68HC912DG128
Read Ok
Saved backup File : C:\Users\PatrykMBE\Documents\Temp\Temp15.bin

Device Info:
Vcc= 5.0
Device: MC68HC912DG128
Size: 7FF
MCU ID:
Program Adres Range:
Start Adres: 000000
End Adres: 000801
Programmer Information:
SWA: 1.94
SWB: 1015
SWA.B: v212
Upd.Status: Ok
Date SW:
SN: 5904855
Name: JtagDS
HW Status: Ok
LID: 62D98E3300000A9

Read Ok Jtag II Conected smok.com.pl



www.mbkeyprog.com



+48 517 443 433
+48 22 724 99 96
info@mbkeyprog.com