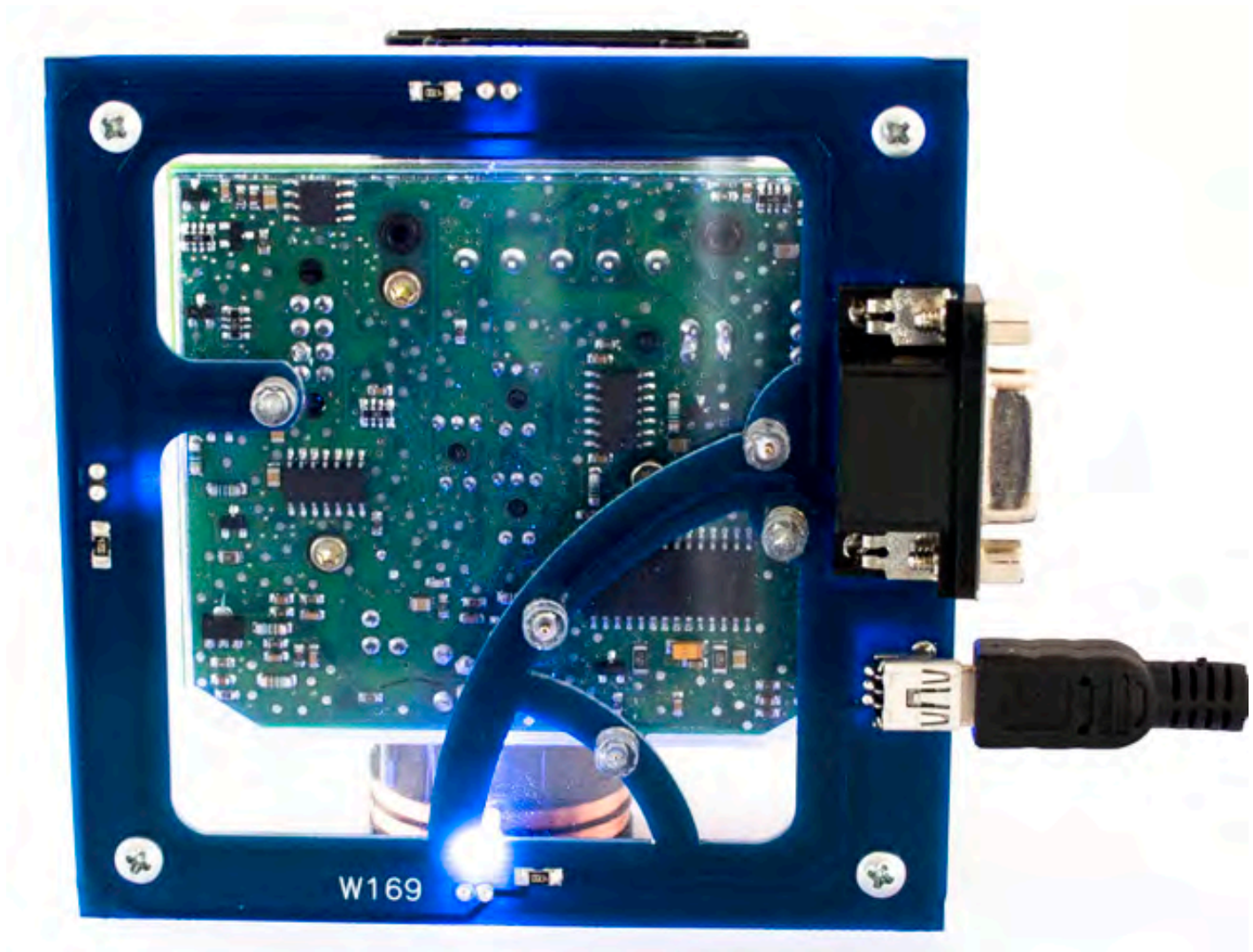


Click'n Go



W169 Click'n Go Adapter

Works with MBProg Programmer. No soldering required.



www.mbkeyprog.com



+48 517 443 433
+48 22 724 99 96
info@mbkeyprog.com

W169



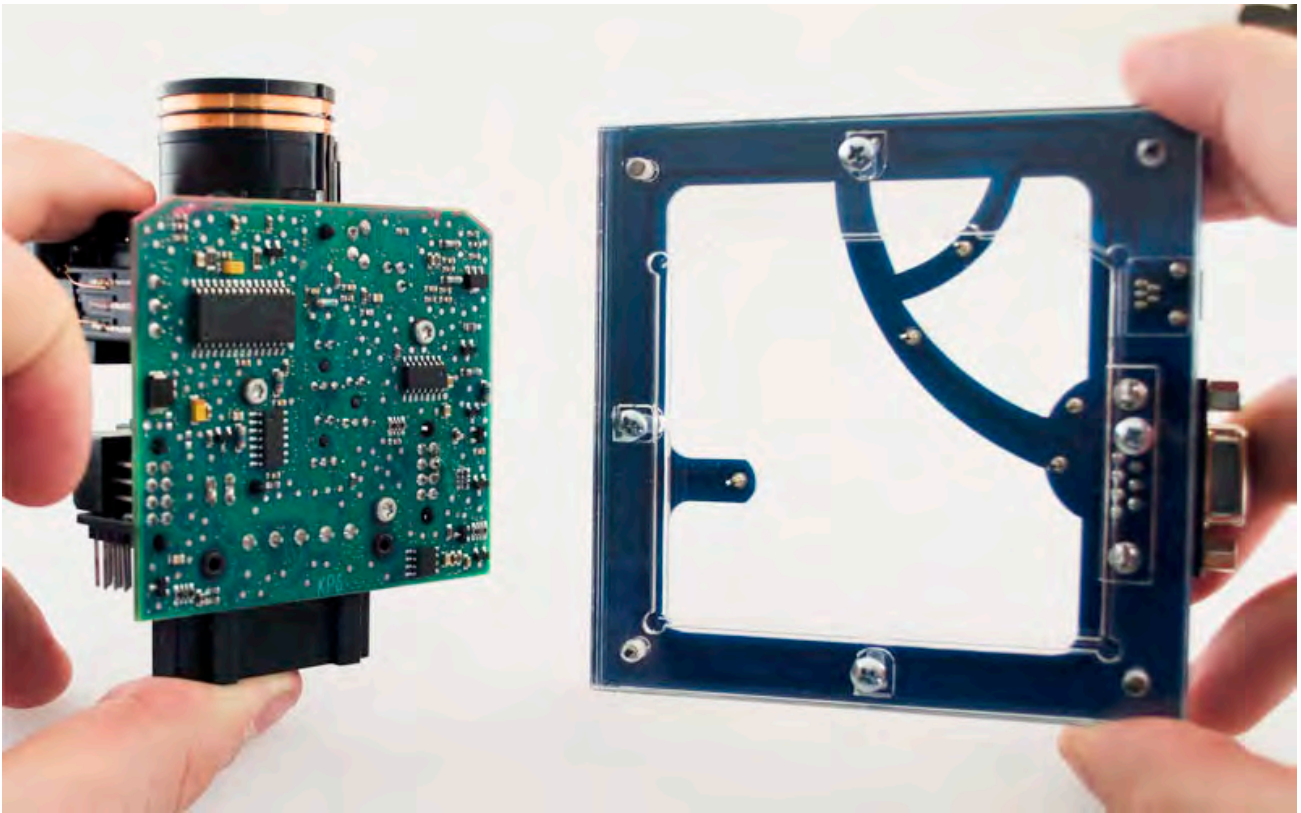
How to connect

Carefully open by pushing in the EIS back body tabs.

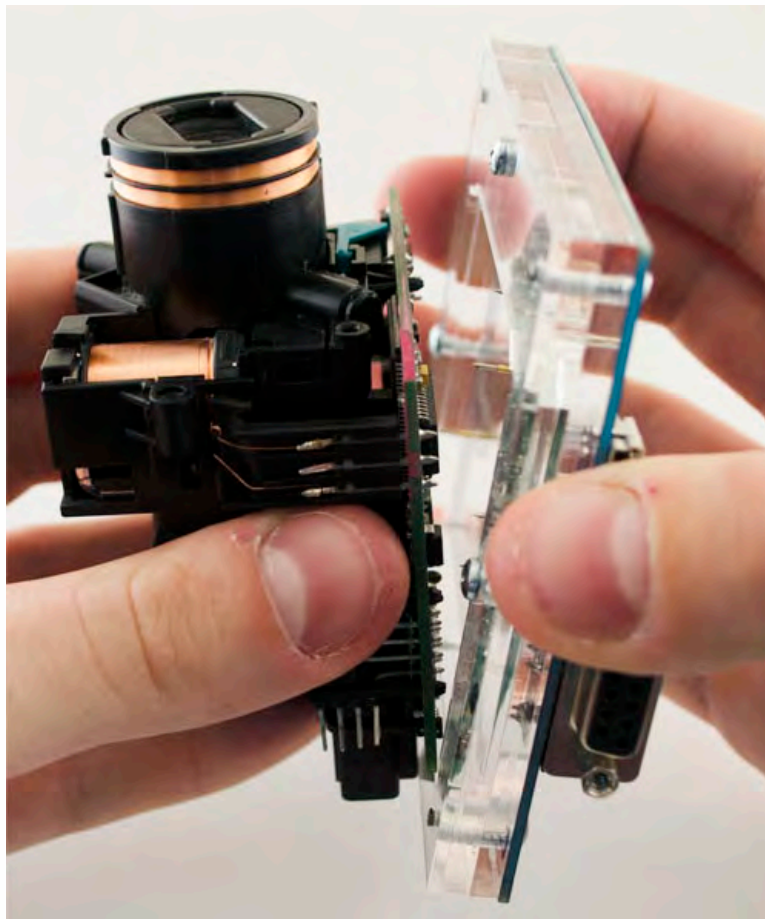


W169

Match the top of the EIS board with top of Click'n Go adapter.

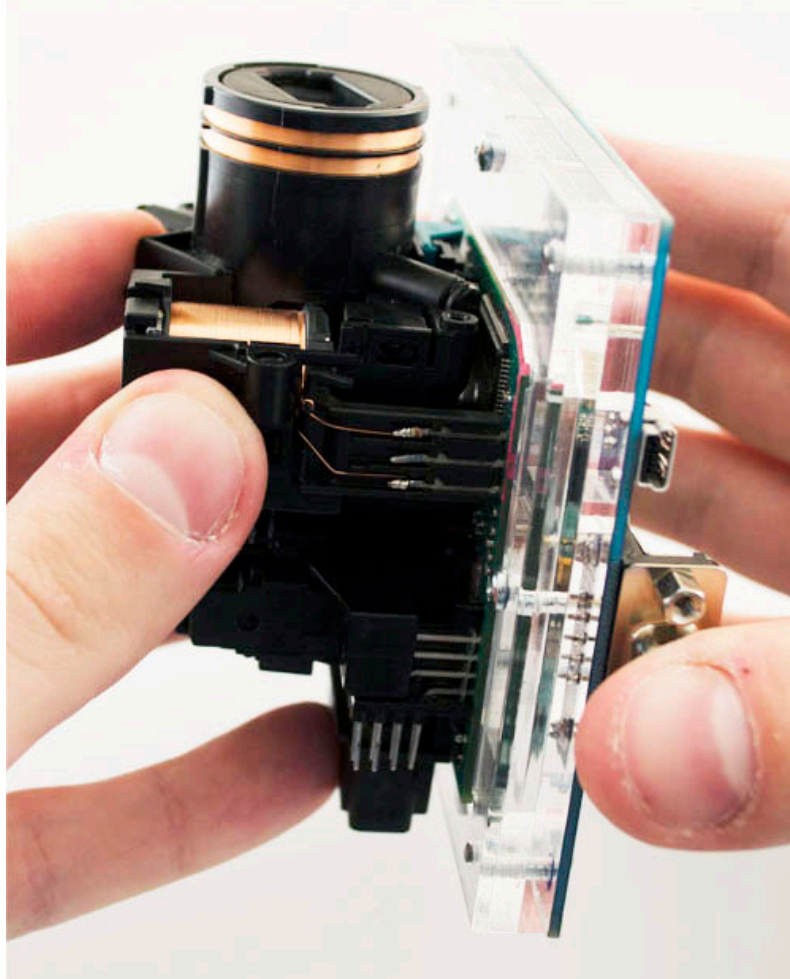


Mount the EIS board on the Click'n Go Adapter.

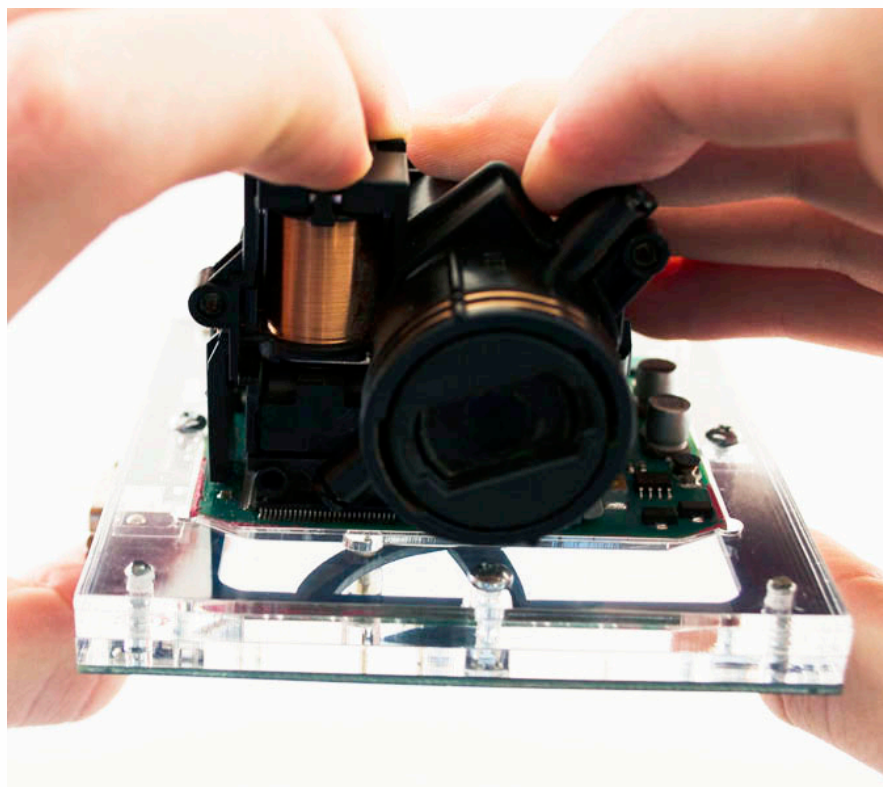


W169

Put the top of EIS board into Click'n Go adapter.

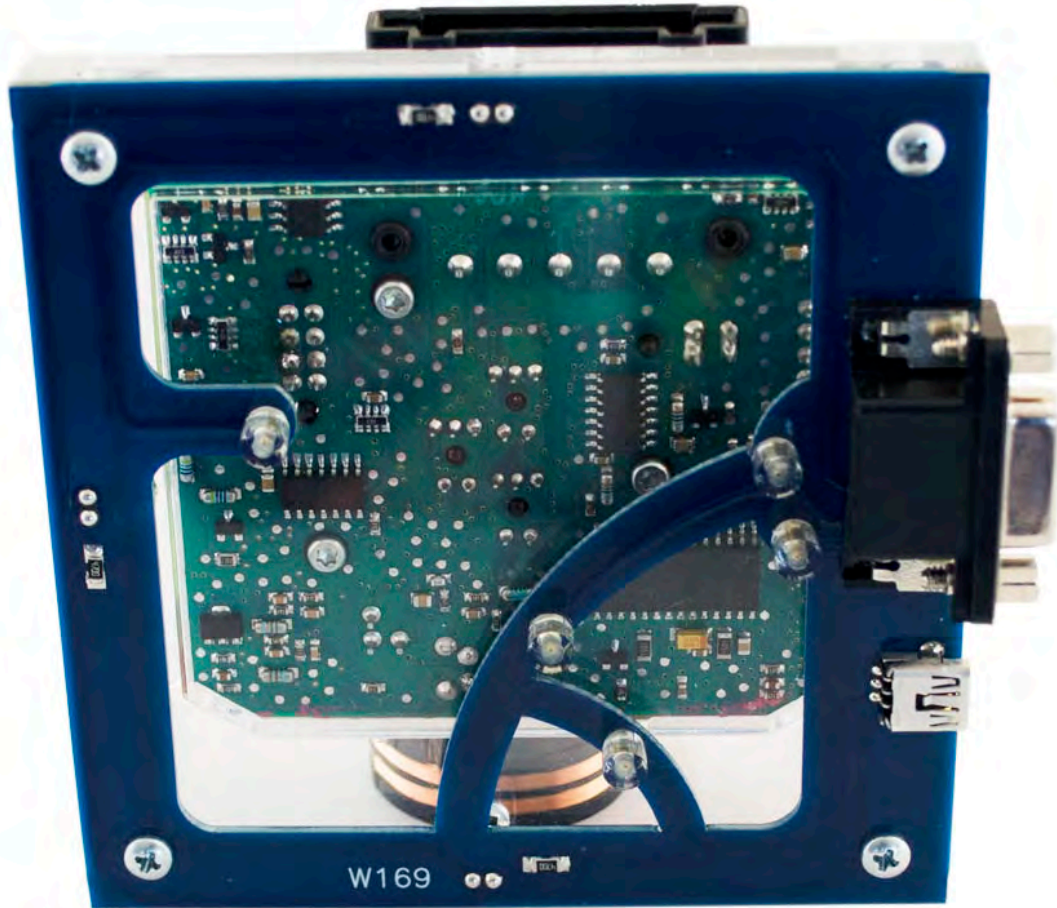


Carefully push down the EIS on to Click'n Go adapter.



W169

Make sure that Click'n Go adapter is mounted correctly on the EIS.



Connect both cables to Click'n Go adapter.



W169

**Connect MBProg 2 Click'n Go cable to MBProg.
Connect USB cable to MBProg and PC.**



W169

How to read

- Open MBProg software.
- Check bottom right corner if your device is correctly connected.
- Now click Chip button.

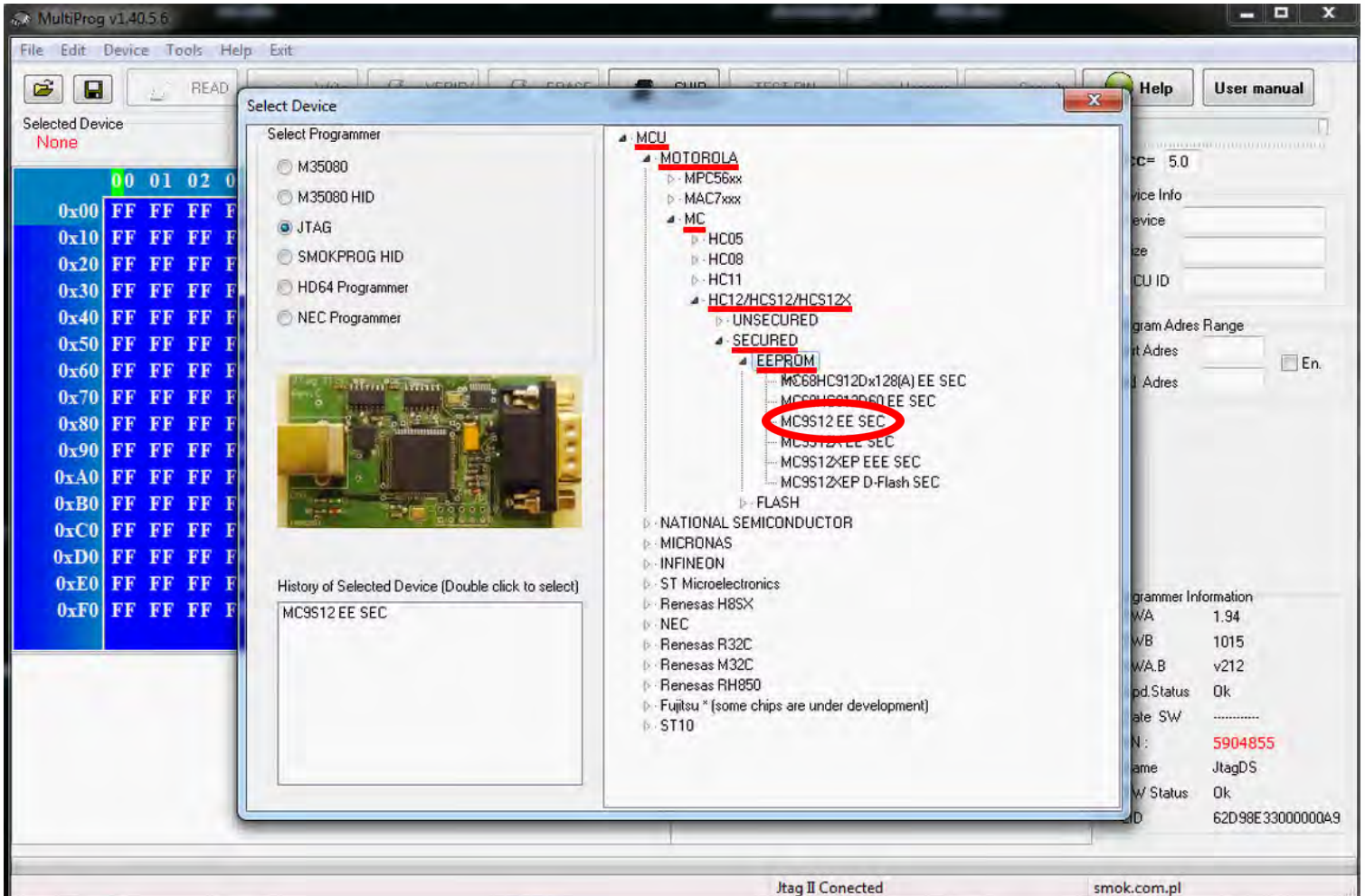
The screenshot displays the MultiProg v1.40.5.6 software interface. The main window shows a memory dump with columns for addresses (00-0F) and hex values (FF). The 'CHIP' button in the toolbar is circled in red. The bottom right corner, also circled in red, contains the 'Programmer Information' section with the following details:

Programmer Information	
SWA	1.94
SWB	1015
SWA.B	v212
Upd.Status	Ok
Date SW
SN :	5904855
Name	JtagDS
HW Status	Ok
LID	62D98E3300000A9

At the bottom of the window, the status bar shows 'Jtag II Conected' and 'smok.com.pl'.

W169

Make sure that JTAG is selected in programmer software.
Select MOTOROLA > MC > HC12/HCS12/HCS12X > SECURED > EEPROM
and double click on MC9S12 EE SEC option as seen in the red circle.



W169

The EIS reading process is done.
If you can see VIN# it has been read correctly.

MultiProg v1.40.5.6

File Edit Device Tools Help Exit

READ Write VERIFY ERASE CHIP TEST PIN Unsecure Security Help User manual

Selected Device: MC9S12 EE SEC

Address	00	01	02	03	04	05	06	07	08	09	0A	0B	0C	0D	0E	0F	01	2	3	4	5	6	7	8	9	A	B	C	D	E	F
0x3B0	FF	FF	FF	FF	FF	FF	FF	FF	FF	FF	FF	FF	FF	FF	FF	FF	S.R.	W												
0x3C0	FF	FF	FF	FF	FF	FF	FF	FF	FF	FF	FF	FF	01	24	52	07	12	57													
0x3D0	44	44	32	34	35	32	30	37	31	4A	31	31	33	30	37	33	DD2452071J113073														
0x3E0	01	A7	40	74	A2	9A	00	09	14	00	00	00	00	00	00	00	@														
0x3F0	00	00	14	00	00	00	20	E0	00	00	00	00	10	72	05	C5	U														
0x400	00	00	90	55	68	00	FF	FF	08	1E	C8	01	53	2A	6F	AE	U														
0x410	02	E6	86	70	CA	D2	AF	D3	FD	19	79	8F	35	2D	50	2C	p														
0x420	FF	FF	FF	FF	FF	FF	FF	FF	FF	01	01	04	FF	FF	FF	FF															
0x430	FF	FF	FF	FF	FF	FF	FF	FF	FF	FF	FF	FF	FF	FF	FF	FF															
0x440	FF	FF	00	80	00	00	00	00	00	00	00	00	00	80	42	02															
0x450	F5	D1	3B	7F	BC	60	E3	E8	AB	00	FF	FF	FF	FF	FF	FF															
0x460	FF	FF	AA	21	80	0F	A4	AA	FF	FF	AA	57	44	44	32	34															
0x470	35	32	30	37	31	4A	31	31	33	30	37	33	57	B3	D3	25	52071J113073W														
0x480	9F	87	FA	86	11	13	00	00	00	20	00	20	BF	BF	FF	BF															
0x490	00	00	00	20	00	00	20	20	BF	BF	BF	BF	00	00	00	00															
0x4A0	00	00	00	00	FF	FF	FF	FF	00	51	FF	FF	FF	FF	02	00															
0x4B0	02	E0	E0	55	00	00	AA	E0	A4	88	26	E9	1C	B2	38	C4	U														

Read EE MC9S12 EE SEC
Read ID MCU ok
MCU ID : 0115
Memory Config : 1380
Unsecuring...
f=136, t1=165, t2=7
Unsecure Ok
Reading EE MC9S12 Secured...
Read OK
Saved backup File : C:\Users\PatrykMBE\Documents\Temp\Temp9.bin

Read OK

Jtag II Connected

smok.com.pl

Device Info
Vcc= 5.0
Device: 9s12DG128
Size: 2048
MCU ID: 0115
Program Adres Range
Start Adres: 000000
End Adres: 0007FF

Programmer Information
SWA: v1.94
SWB: 1015
SWA.B: v212
Upd.Status: Ok
Date SW:



www.mbkeyprog.com



+48 517 443 433
+48 22 724 99 96
info@mbkeyprog.com