

MB Keymaker Pro



MB Keymaker Pro Copying of existing transponder (use of GMT46 transponder)



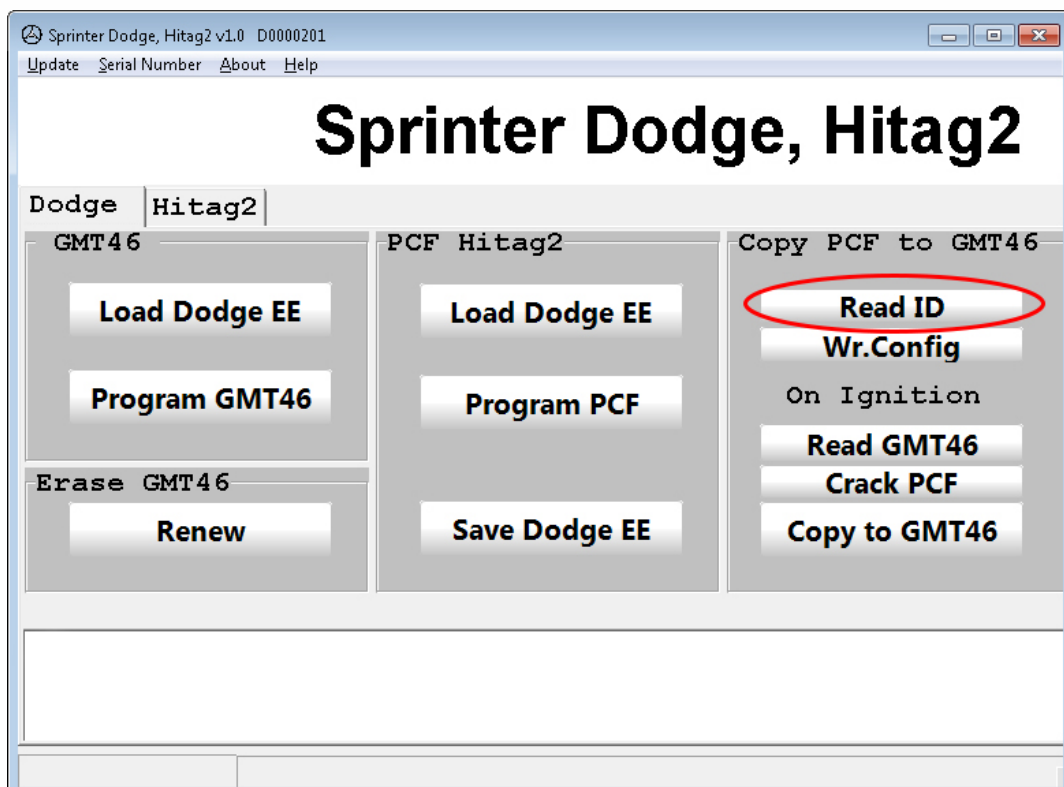
MB Keymaker Pro

Connect the device to the computer
Put existing key with PCF 7936 transponder or PCF 7936 transponder itself into the device

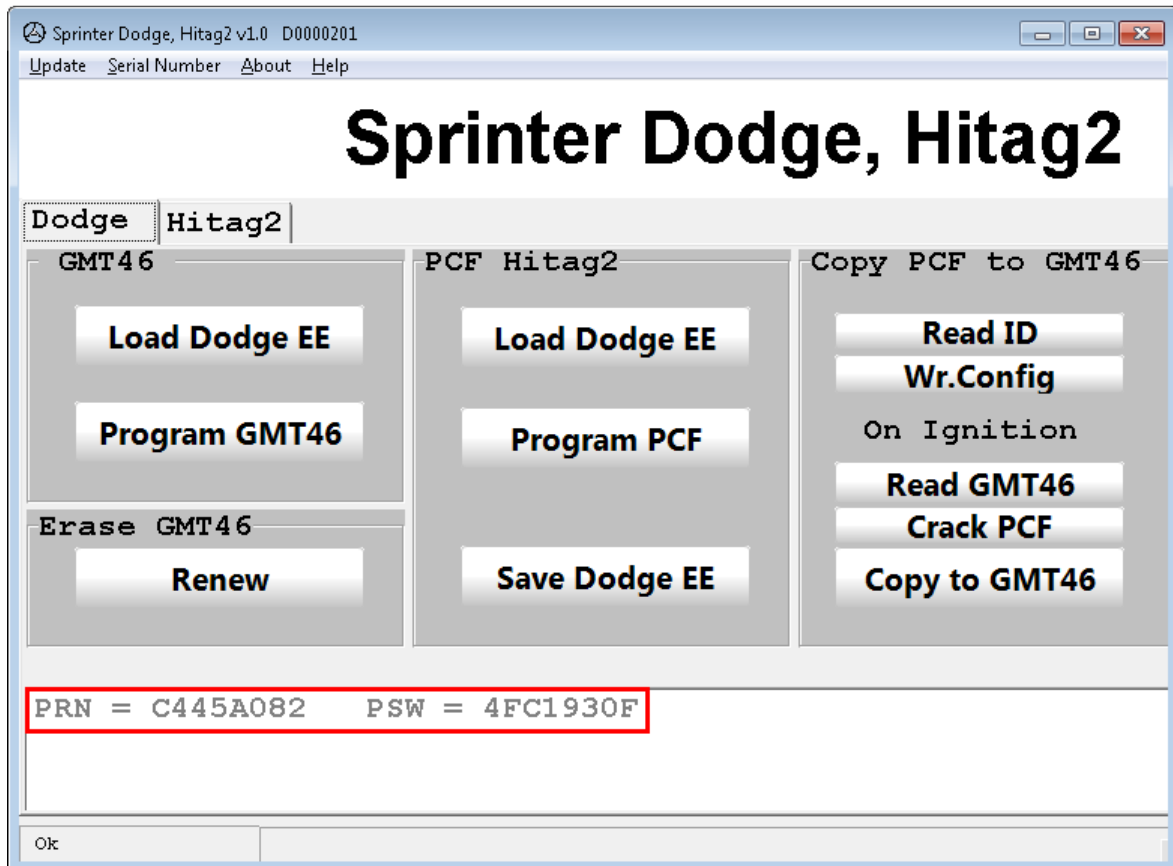


Run Keymaker Pro software and click Read ID in the Copy PCF to GMT46 tab

It should show you transponder status



MB Keymaker Pro

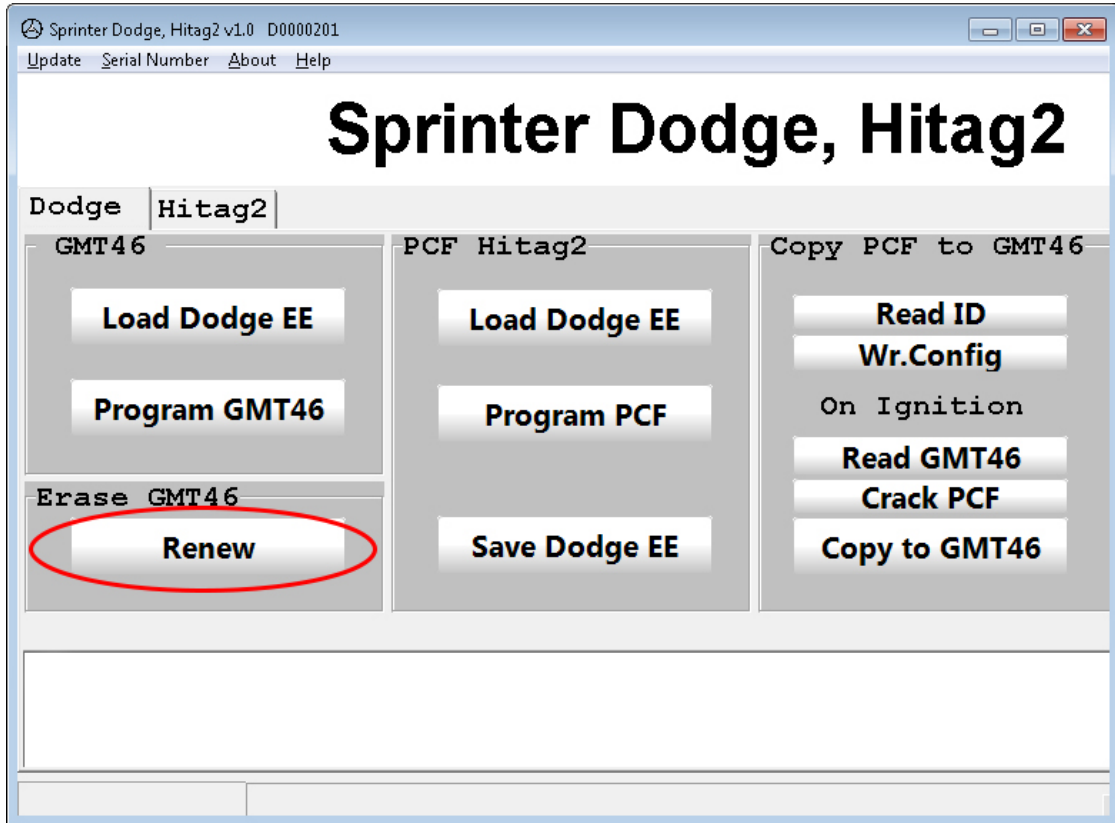


Put a new GMT46 transponder into the device

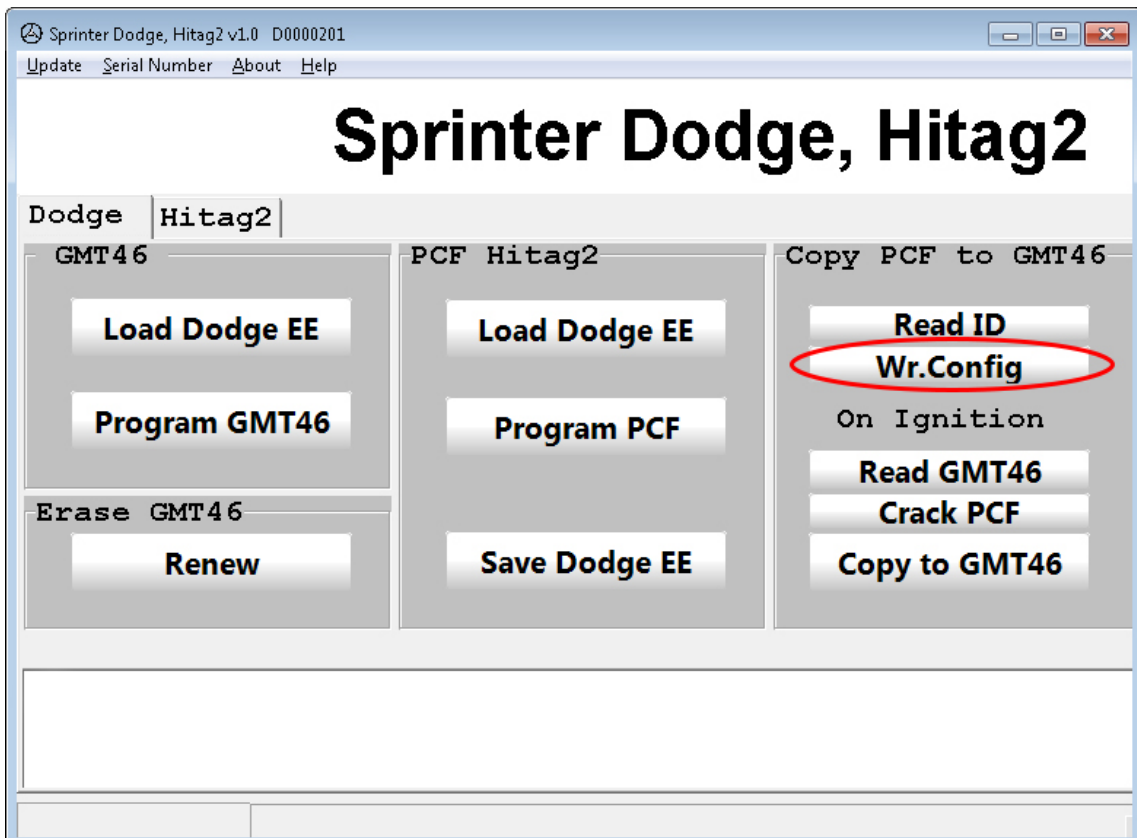


MB Keymaker Pro

Click Renew



Click WrConfig



MB Keymaker Pro

**Put prepared transponder in the key
Put the key in the ignition of a car for about 5 seconds**



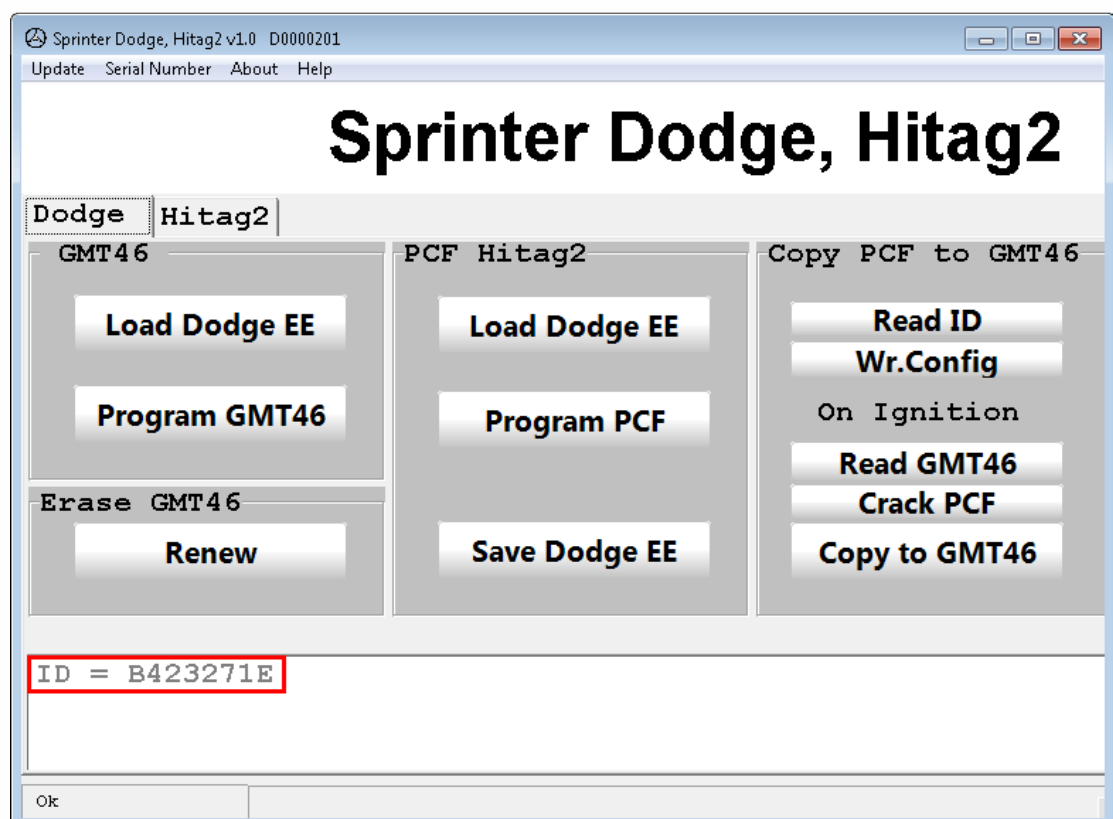
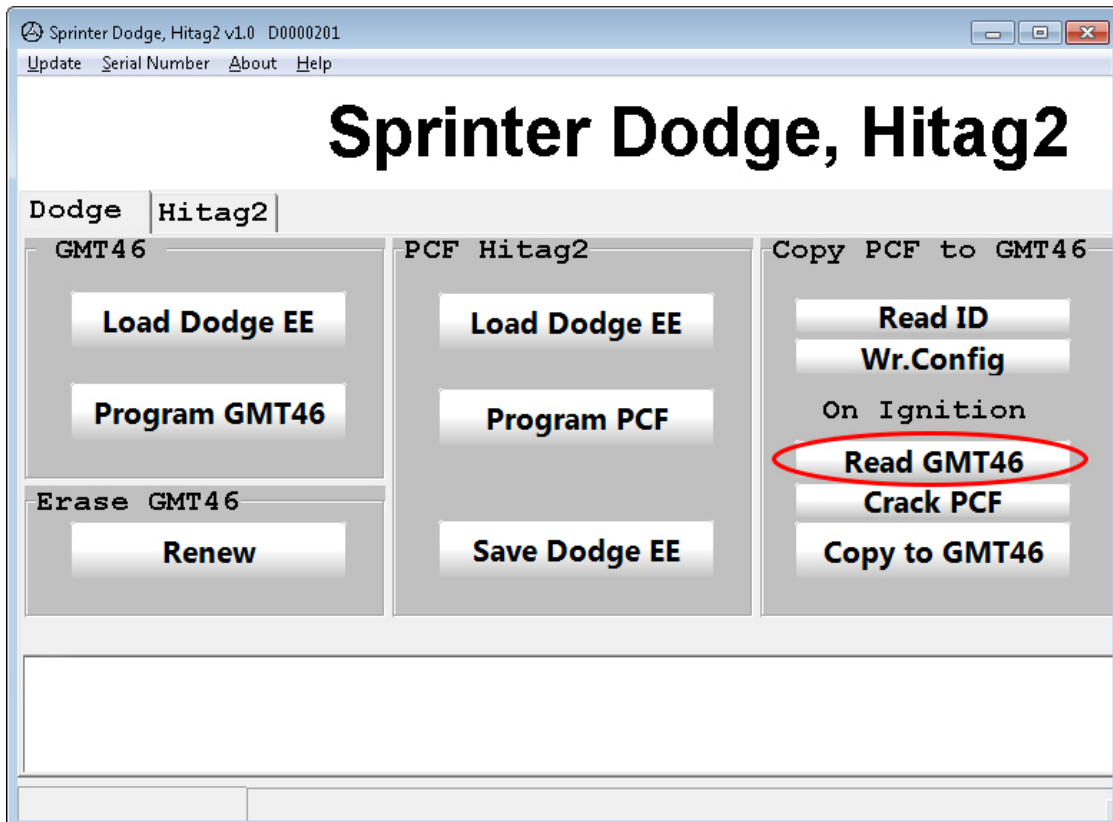
Put transponder out of the key and put it into the device



MB Keymaker Pro

Click Read GMT46 button in Copy PCF to GMT46 tab

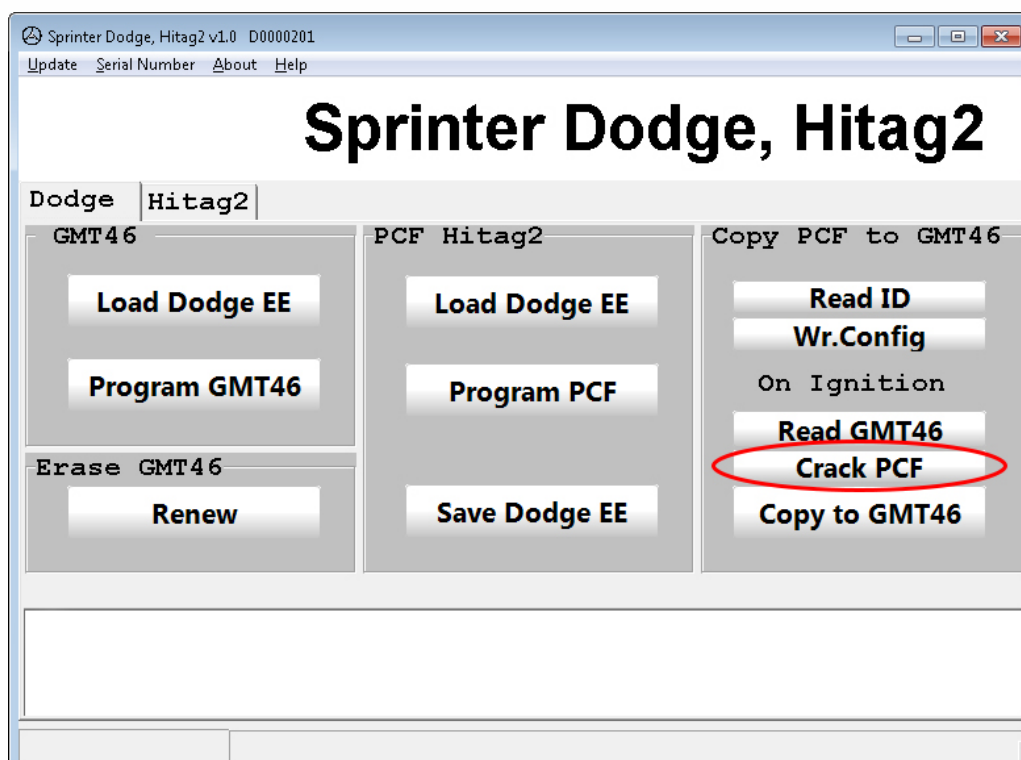
It should show you status. If it shows 0's, 1's or Error message you have to repeat the whole process again.



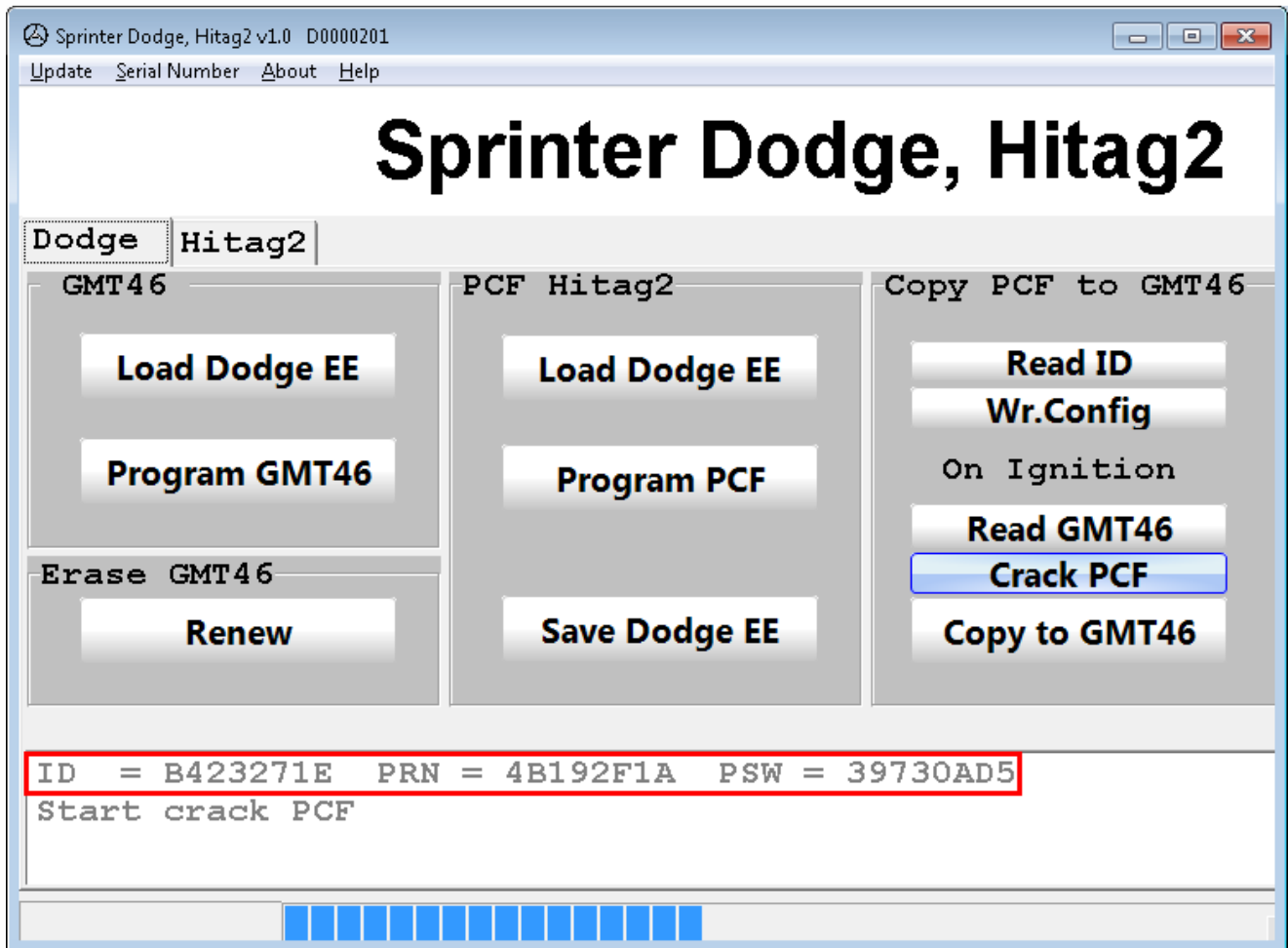
MB Keymaker Pro

Put existing key with PCF 7936 transponder or PCF 7936 transponder itself into the device and click Crack PCF

During Crack PCF it should show you transponder status



MB Keymaker Pro

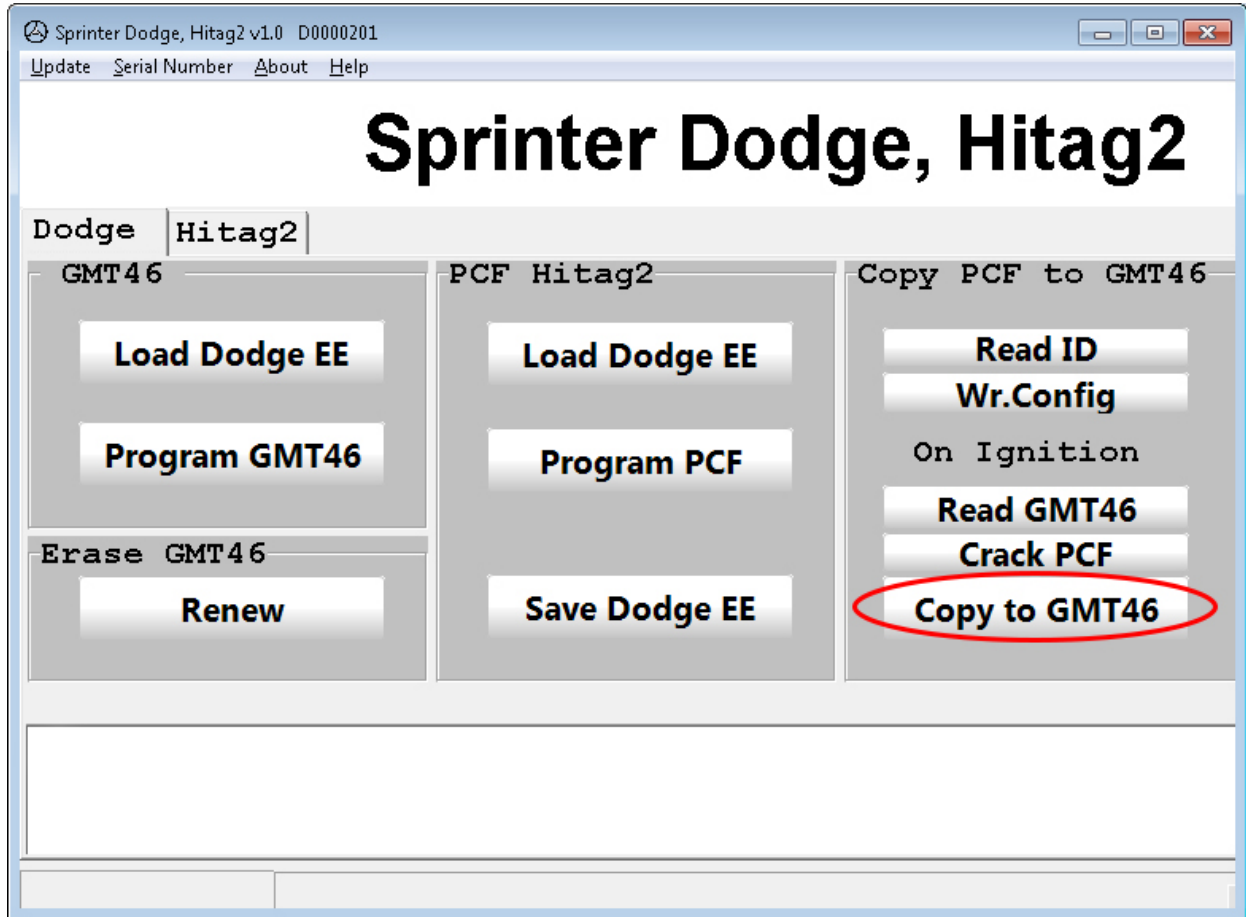


Put GMT46 transponder into the device



MB Keymaker Pro

Click Copy to GMT46 button
It will show you "Successful" status message



Put transponder in the key and run a car

