

MB Keymaker Pro



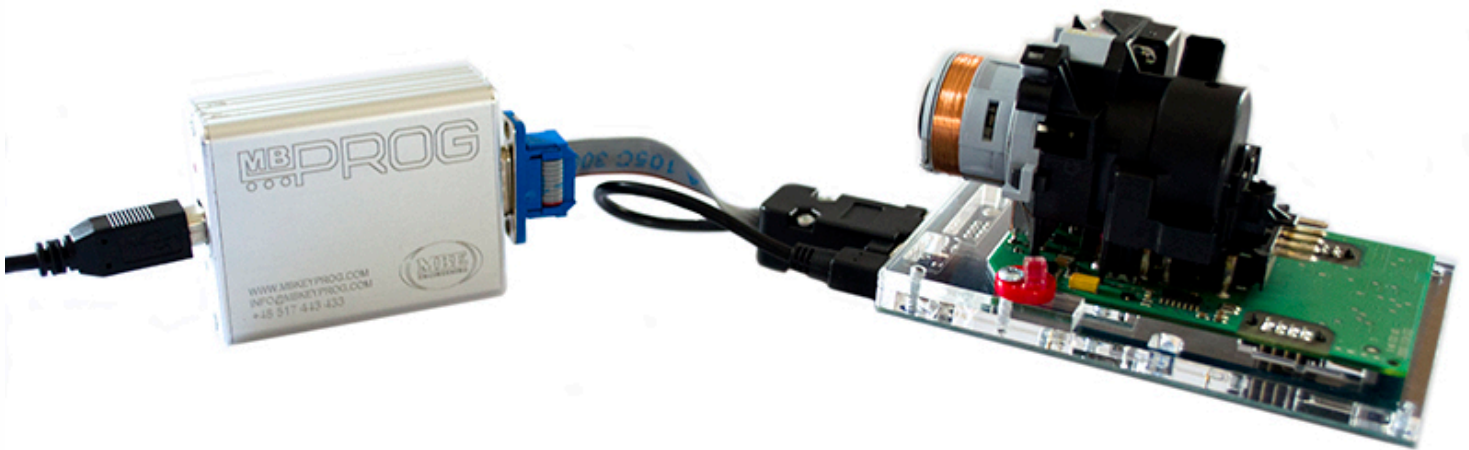
MB Keymaker Pro
All keys lost - add new key (with GMT46 transponder)



MB Keymaker Pro

Read a memory dump out of the EIS with use of MBProg and Click'n Go

Connect Click'n Go adapter to EIS
Connect USB cable to PC



Open MBProg and click on Chip button

MultiProg v1.40.6.3

File Edit Device Tools Help Exit

READ Write VERIFY ERASE **CHIP** TEST PIN Usecure Security Help User manual

Selected Device: None

	00	01	02	03	04	05	06	07	08	09	0A	0B	0C	0D	0E	0F	0123456789ABCDEF
0x00	FF	FF	FF	FF	FF	FF	FF	FF	FF	FF	FF	FF	FF	FF	FF	FF
0x10	FF	FF	FF	FF	FF	FF	FF	FF	FF	FF	FF	FF	FF	FF	FF	FF
0x20	FF	FF	FF	FF	FF	FF	FF	FF	FF	FF	FF	FF	FF	FF	FF	FF
0x30	FF	FF	FF	FF	FF	FF	FF	FF	FF	FF	FF	FF	FF	FF	FF	FF
0x40	FF	FF	FF	FF	FF	FF	FF	FF	FF	FF	FF	FF	FF	FF	FF	FF
0x50	FF	FF	FF	FF	FF	FF	FF	FF	FF	FF	FF	FF	FF	FF	FF	FF
0x60	FF	FF	FF	FF	FF	FF	FF	FF	FF	FF	FF	FF	FF	FF	FF	FF
0x70	FF	FF	FF	FF	FF	FF	FF	FF	FF	FF	FF	FF	FF	FF	FF	FF
0x80	FF	FF	FF	FF	FF	FF	FF	FF	FF	FF	FF	FF	FF	FF	FF	FF
0x90	FF	FF	FF	FF	FF	FF	FF	FF	FF	FF	FF	FF	FF	FF	FF	FF
0xA0	FF	FF	FF	FF	FF	FF	FF	FF	FF	FF	FF	FF	FF	FF	FF	FF
0xB0	FF	FF	FF	FF	FF	FF	FF	FF	FF	FF	FF	FF	FF	FF	FF	FF
0xC0	FF	FF	FF	FF	FF	FF	FF	FF	FF	FF	FF	FF	FF	FF	FF	FF
0xD0	FF	FF	FF	FF	FF	FF	FF	FF	FF	FF	FF	FF	FF	FF	FF	FF
0xE0	FF	FF	FF	FF	FF	FF	FF	FF	FF	FF	FF	FF	FF	FF	FF	FF
0xF0	FF	FF	FF	FF	FF	FF	FF	FF	FF	FF	FF	FF	FF	FF	FF	FF

Vcc= 5.0

Device Info

Device:

Size:

MCU ID:

Program Adres Range

Start Adres: En.

End Adres:

Programmer Information

SWA: 1.95

SWB: 1015

SWA.B: v212

Upd.Status: Ok

Date SW:

SN: 7205005

Name: JtagDS

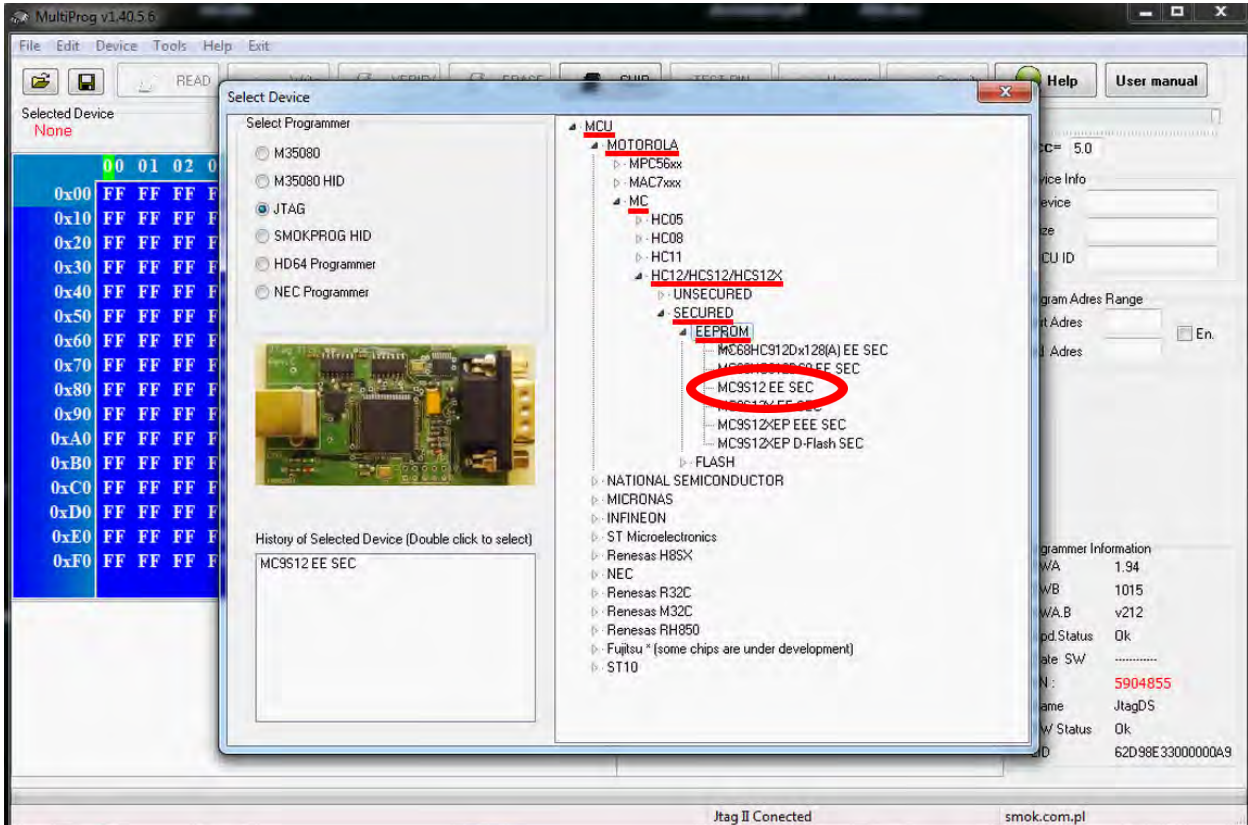
HW Status: Ok

LID: 6295901500000006

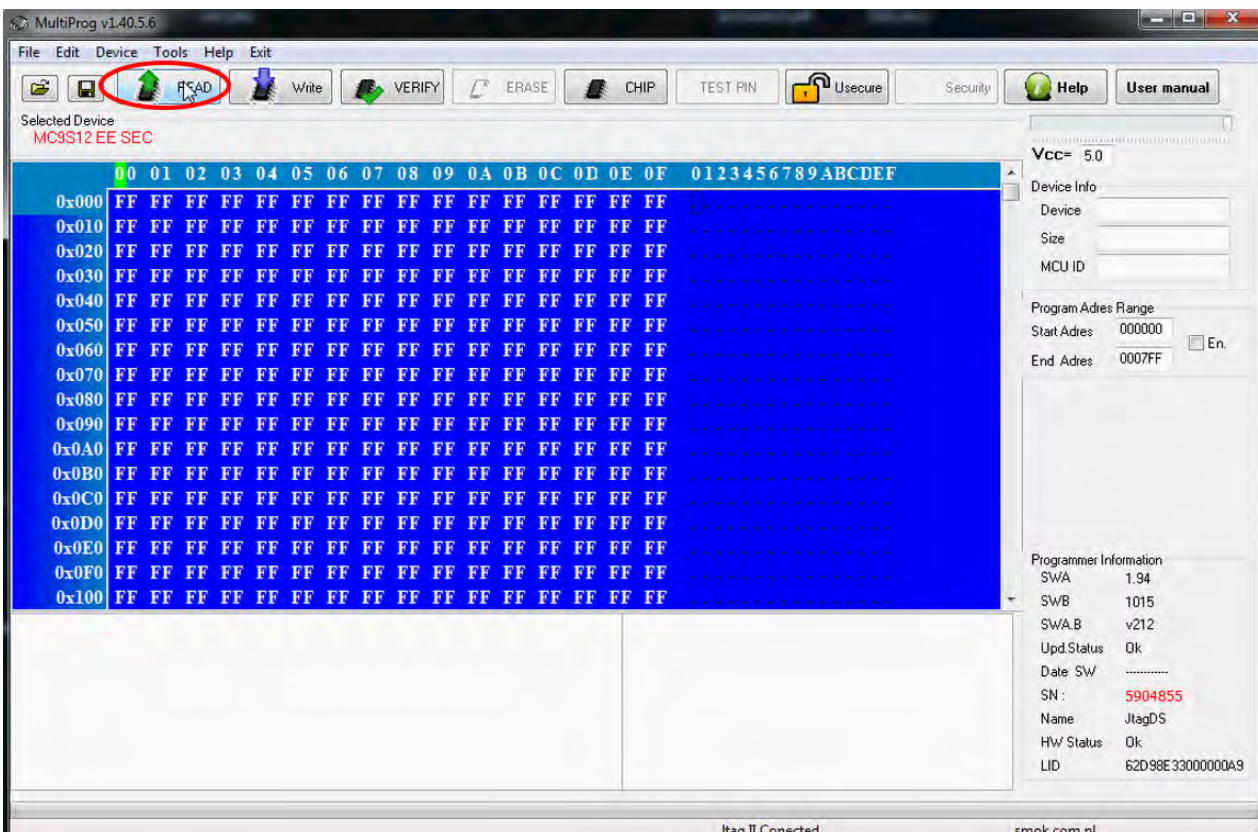
Jtag II Conected smok.com.pl

MB Keymaker Pro

Make sure that JTAG is selected in programmer software.
Select MOTOROLA > MC > HC12/HCS12/HCS12X > SECURED > EEPROM
and double click on MC9S12 EE SEC option as seen in the red circle.

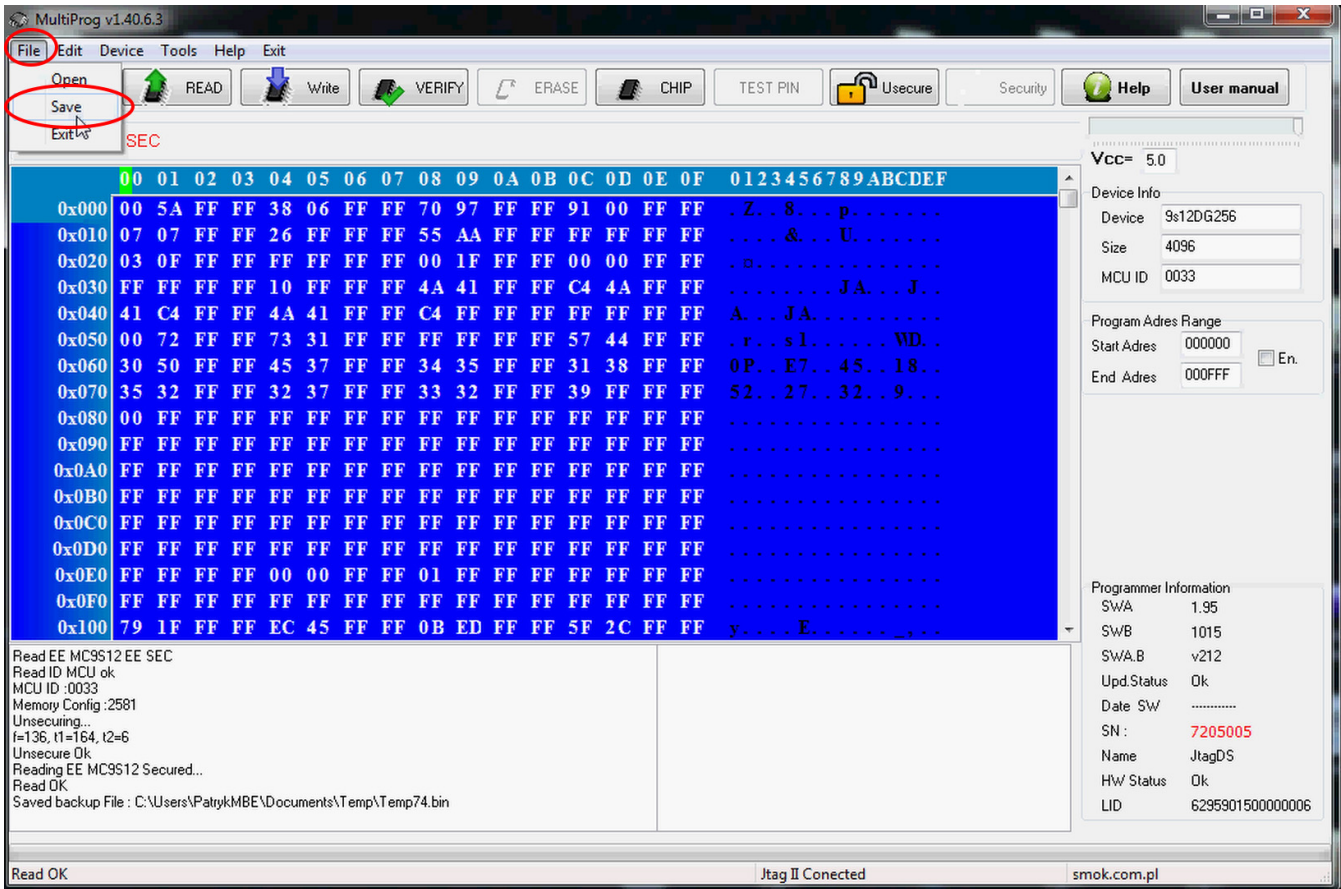


Now click on Read button.

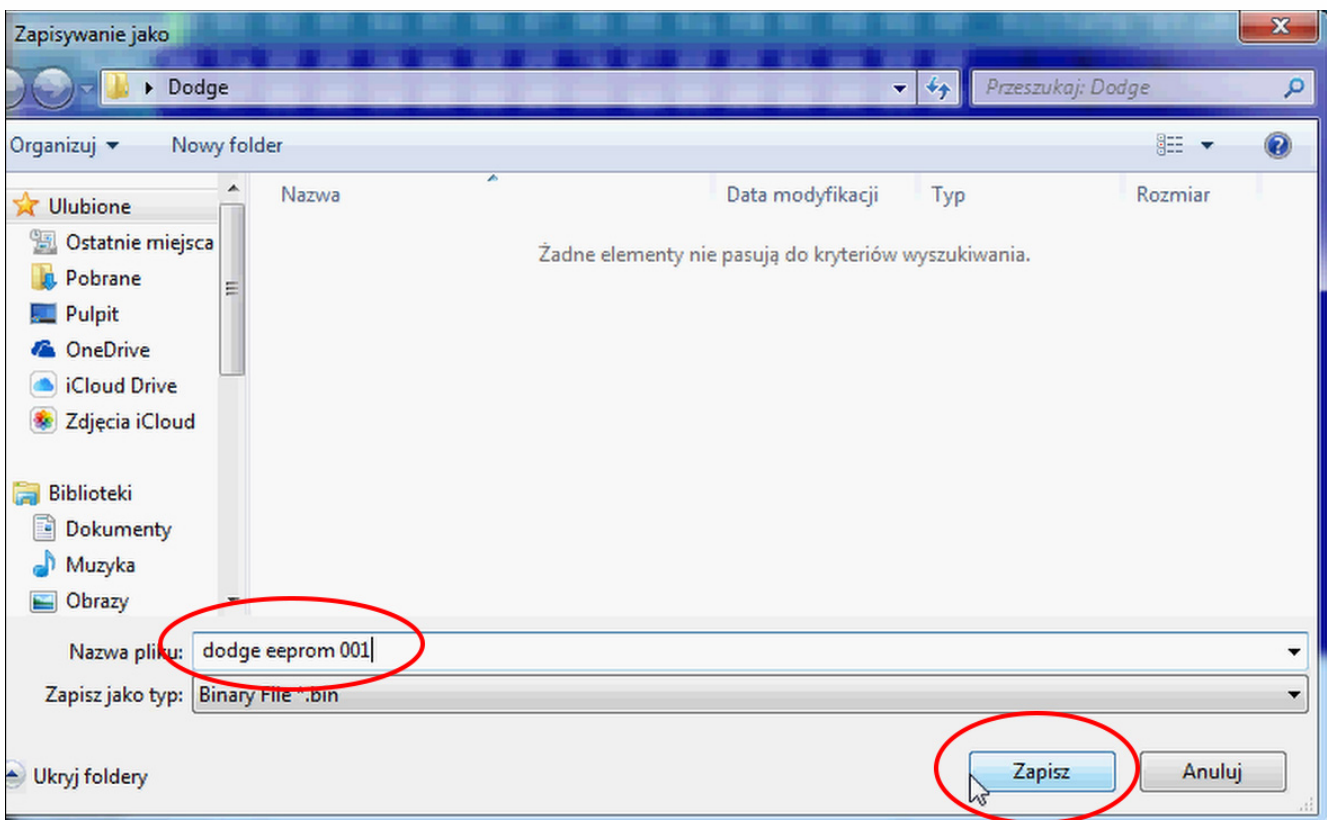


MB Keymaker Pro

Now click on File and select Save option



Choose a file location and a name for the dump
Click save button

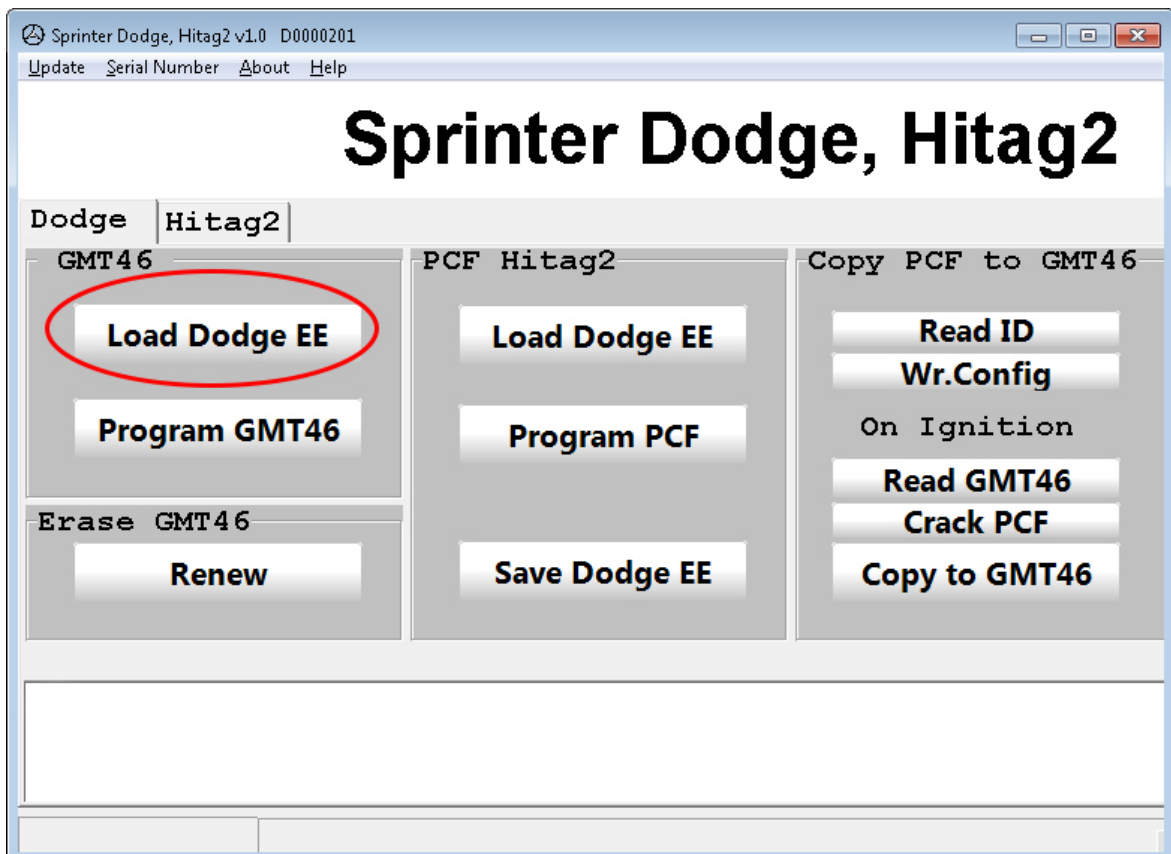


MB Keymaker Pro

Connect the device to the computer
Put a new GMT46 transponder in the device

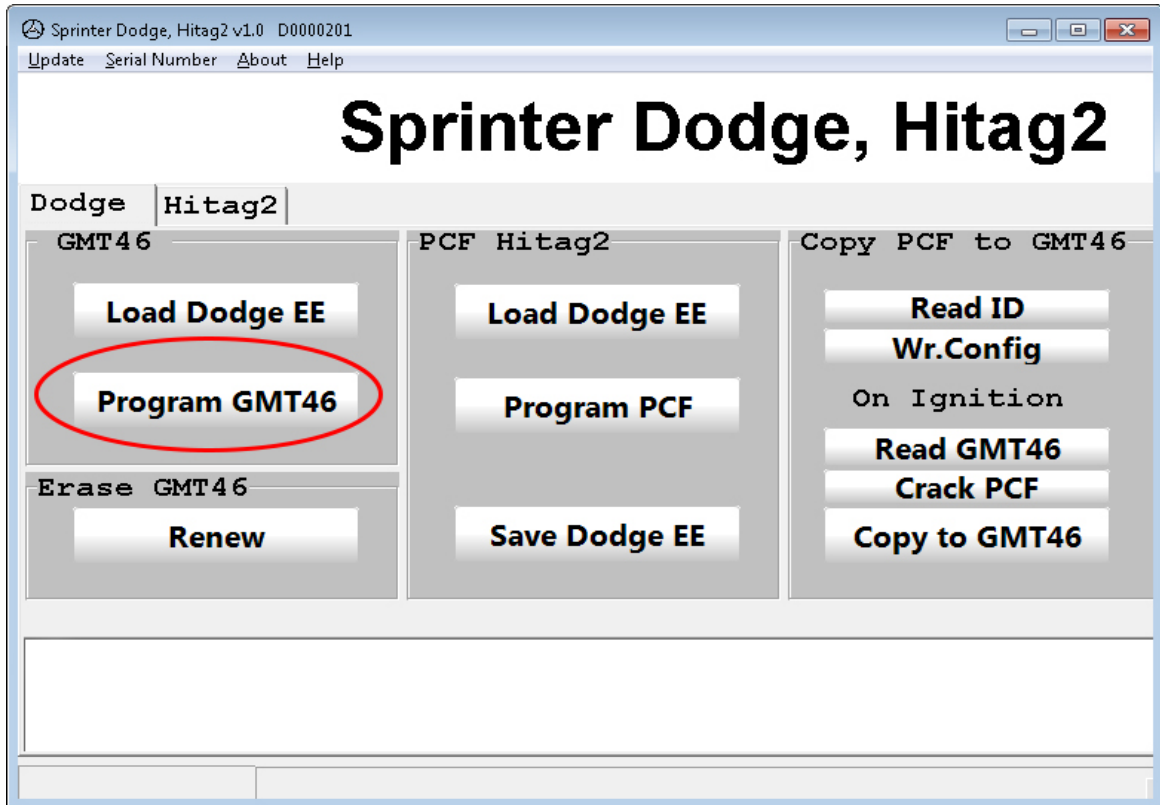


Run Keymaker Pro software and click Load Dodge EE in GMT46 tab
Choose proper file



MB Keymaker Pro

Click Program GMT46 button



Put transponder in a key and run a car

