

SLIMdri™ L-162 Hand Dryer



Surface-Mounted ADA Compliant Hand Dryers

WORLD DRYER

SLIMdri™ is an energy efficient, surface-mounted and ADA compliant hand dryer. The SLIMdri hand dryer is perfect for all commercial washrooms. The On/Off heating control, stylish low-profile design with flexible cover options and universal voltage features fits any décor or washroom environment.

Product Benefits

- Surface-mounted ADA compliant
- Simplifies installation and reduces installation costs
- Up to 40% faster dry time than leading competitive surface-mounted ADA dryers
- Up to 70% less energy than competitive dryers
- Universal voltage – accepts 110-120 / 208 / 220-240 VAC input
- ON/OFF heat control to customize comfort and energy savings
- Incorporates SteriTouch® antimicrobial technology inhibiting the growth of bacteria, mold and fungus extending the dryer's service life
- Automatic activation
- IP23 rating - protection against harmful water ingress
- Ultra compact and contemporary stylish design
- Durable and vandal resistant



Architecture & Engineering Specifications

SLIMdri™ Model L-162 hand dryers shall be manufactured by World Dryer® Corporation to include a cover constructed of die-cast aluminum and finished with black epoxy paint that is incorporated with SteriTouch® antimicrobial additive. The covers shall be attached to the wall mounting plate with tamper-proof screws. Motor shall be universal brush type motor operating at 13,000 RPM and shall be thermally protected. Dryer shall deliver 70 cubic feet per minute of air volume at a velocity of 140 MPH (12,320 LFM). Dryer shall incorporate universal control accepting 115 / 208 / 230VAC input. Dryer will incorporate a chrome wire heating element protected by an automatic resetting thermal cutoff. Dryer shall be activated by an automatic active infrared sensor controlled by a circuit board with a 3 second run-on time and 60 second vandal shut-off. Control board shall contain a heater control switch which can be set to either the ON or OFF position. Dryer shall provide a 48° temperature rise. Dryer shall have an ingress protection rating of IP23. Hand dryers shall be listed under reexamination service of Underwriters Laboratories, Inc. standards for safety.

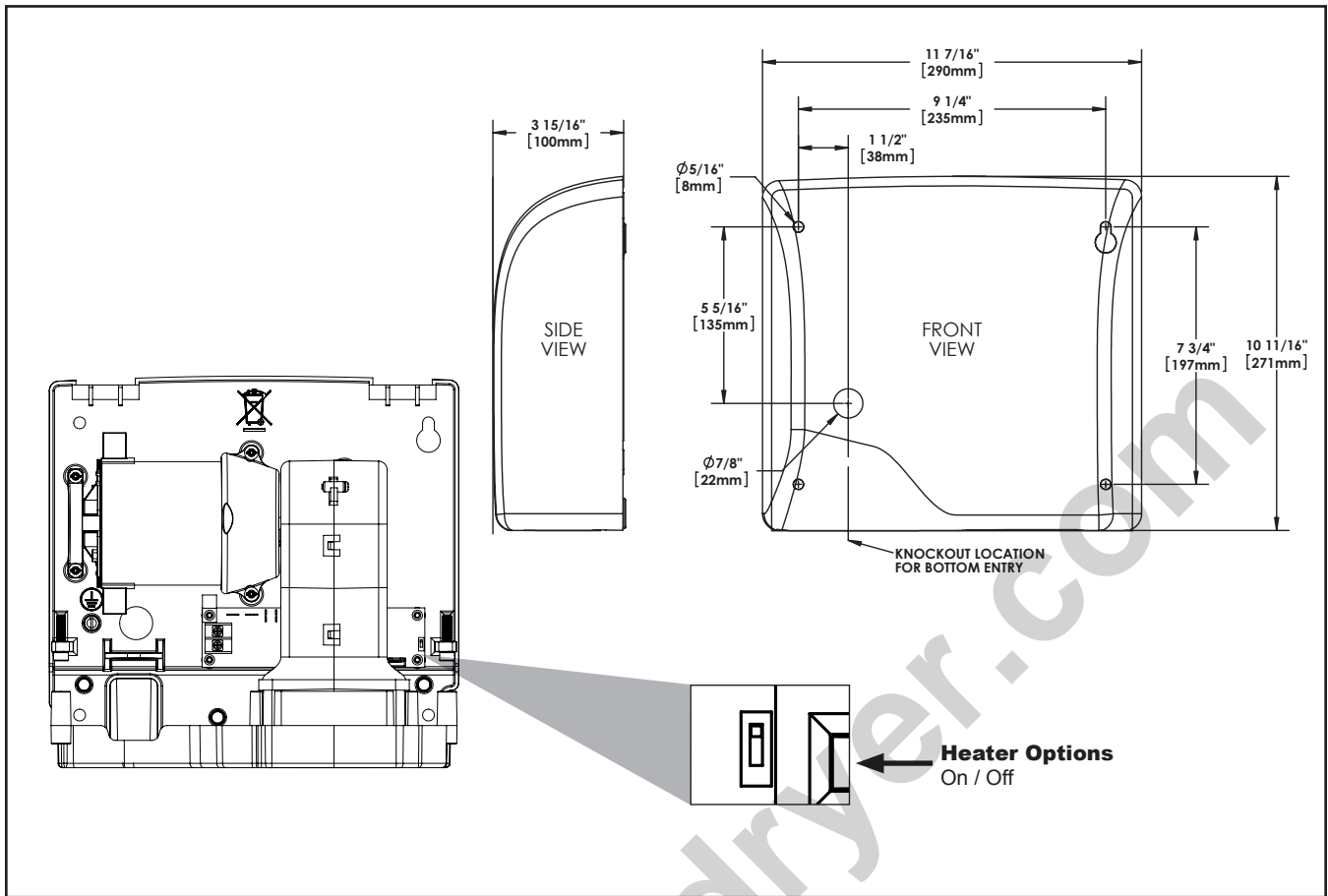
Electrical specifications:

	110-120 V	208 V	220-240 V
Amps	8.3	3.7	4.1
Watts	950	775	950
Hz	60 Hz	60 Hz	60 Hz

Cover options:

Cast Aluminum - with black epoxy paint

Cover Material	Cover Finish / Kit	110-120 / 208 / 220-240 V	Unit Weight	Shipping Weight	Unit Size (HxWxD) inch/mm	Shipping Size (HxWxD) inch/mm
Aluminum	Black	L-162	9.0 lbs / 4.1 kgs	10.6 lbs / 4.8 kgs	10.7" x 11.43" x 3.9" / 271 x 290 x 100	13.8" x 13" x 6.9" / 350 x 330 x 175



Placement Instruction

- Hand dryers should be spaced at least 2 feet apart, near but not over the wash basin
- In congested areas, dryers should be located to create a flow from wash basin to dryer to exit
- SLIMdri should be mounted at least 18" above or away from reflective surfaces which may interfere with the automatic sensor operation.
- Dryer Quantity Recommendation:
 Average Traffic: 1 dryer per 2 wash basins
 Heavy Traffic: 1 dryer per wash basin
 Industrial 54" Circular wash fountains: 4 dryers per sink
- Recommended mounting heights from floor to dryer bottom edge

Men's washrooms	46" (117 cm)
Women's washrooms	44" (112 cm)
Children's washrooms, ages 4-7	32" (81 cm)
Children's washrooms, ages 7-10	36" (91 cm)
Children's washrooms, ages 10-13	40" (102 cm)
Children's washrooms, ages 13-17	44" (112 cm)
Handicap Mounting Height	37" (94 cm)

Installation Guide

- SLIMdri™ hand dryers require a dedicated circuit with a minimum rating of 15 amps and must be properly grounded
- GFI circuit protection is recommended.
- One side of dryer should be mounted to a stud

Certifications



IP23



Warranty



10 year limited warranty
5 year motor and sensor



Allied Hand Dryer, LLC
 760 W Summt Ave
 San Antonio, TX 78212
 800-535-4393
 sales@handdryer.com
 www.handdryer.com

