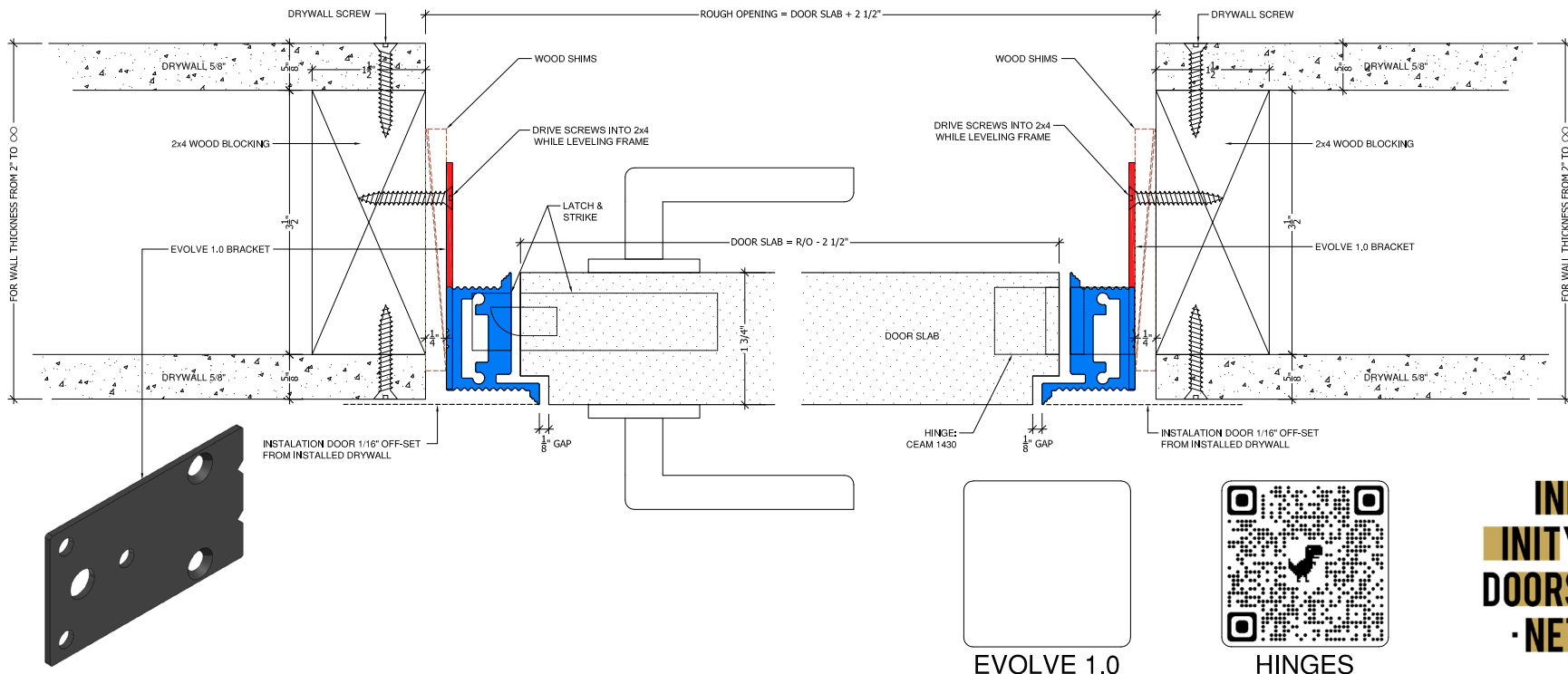


Push Door Installation Instructions - Evolve 1.0 Frame 2023

Step 1

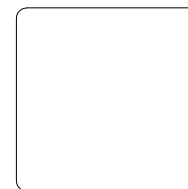
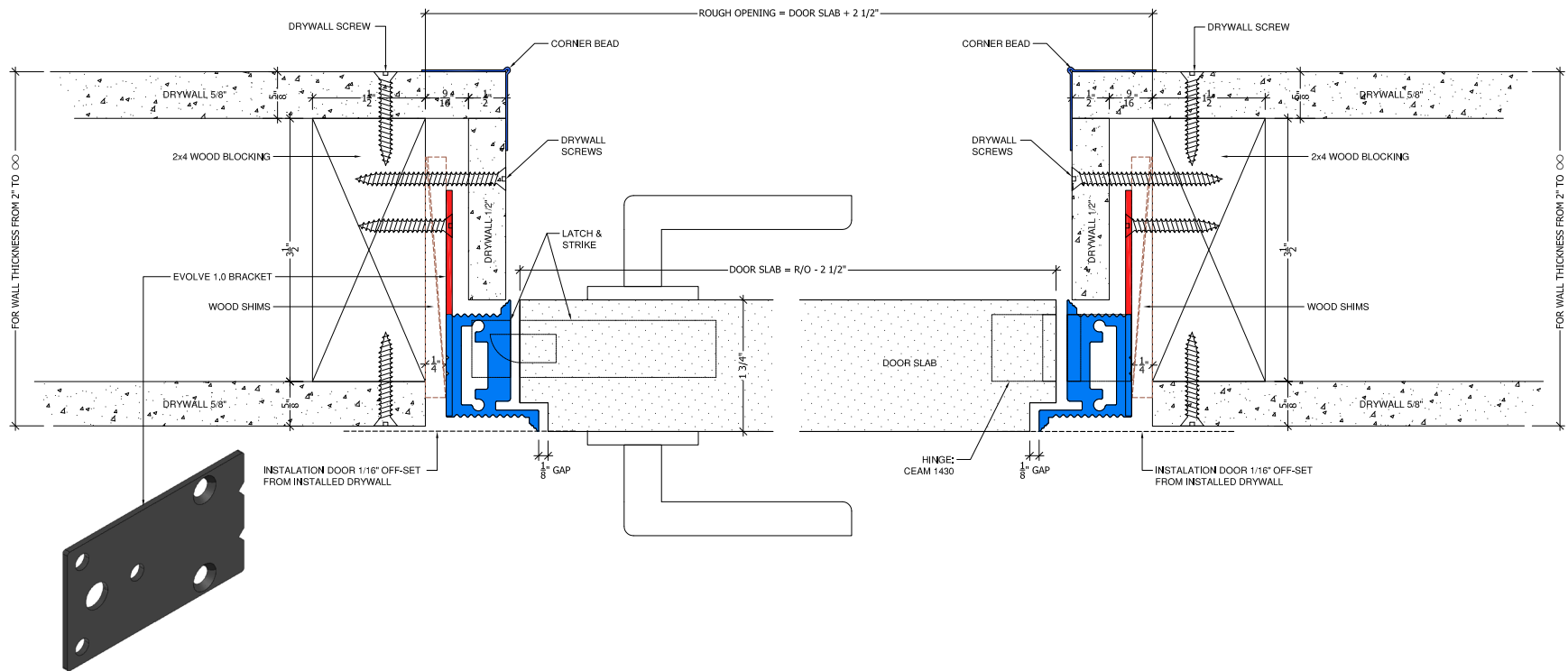
- The Door Assembly is shipped pre-hung, assembled, and tested. It can be installed together or separately.
 - If installing separately, remove the door-slab from the frame and set it on its long side against a wall to avoid warping.
 - Do not remove hinges from the frame. Remove them from door side.
 - Screw in the supplied wood "Spacer" to guarantee internal width of frame is maintained throughout the installation. See QR code below.
- Clip on supplied connecting brackets on factory pre-drilled holes located on the back side of the frame.
 - Stand up frame and start screwing bracket into the 2x4 using # 8 wood screws (not supplied). Use at least 8 brackets. On frames longer than 96" use 10 brackets (5 per vertical side).
 - Brackets or screws are not required on the horizontal frame header.
 - Note that the bracket center hole diameter is larger than the 3 other holes, allowing for micro adjustment of the frame in every direction before final installation.
- Level the frame with a laser or an 8 ft. level.
 - Position the frame at least 1/16" offset from the drywall's outermost corner, otherwise you might end up with the rest of the corners not been leveled with drywall. Walls are never plumb, even in level 5 construction.
 - Use wood shims (not supplied) to adjust the frame level.
 - Ensure the frame is perfectly leveled before removing the "Spacer"
 - Remove 4"X 4" wood blocks from "Spacer" and slide the remaining long wood piece up and down. It should slide smoothly, if not, you need to adjust the shims in or out to close or tighten the gaps.
- Install Door Slab.
 - Re-hang the door if it was removed and proceed to check level one last time using door slab as a guide.
 - Ensure a 1/8" all around gap exists between the door and frame, and if so, tighten strongly all bracket screws.
 - Fine-tune the gaps and door height with 3-D hinges if necessary. **See QR coded below.**



Push Door Installation Instructions - Evolve 1.0 Frame 2023

Step 2

- Verify that the frame is leveled and that the door opens and closes smoothly. Check the 1/8" gaps once again, and make final adjustments if needed.
- Utilize the 3-D hinge micro adjustments, up-down, right-left, and in-out movement to ensure everything is perfect.



EVOLVE 1.0



HINGES



Push Door Installation Instructions - Evolve 1.0 Frame 2023

Step 3

1. Flush Side Plastering:

- Use fiberglass mesh tape and 20-minute plaster to fill in the space between the installed drywall and the front ledge of the frame. This procedure will eliminate cracking.
- Tape the frame with 3-M blue tape to protect from plaster.
- Sand and paint the area like any other wall.

2. Back Side Finishing:

- Attach drywall pieces on the return like any wall.
- Finally, apply a corner-bead as you would on any wall.

3. A team of 2 average installers should be able to hang 3 doors per day. An experienced team should be able to hang 5 doors per day.

