

Instructions for a 1955-1959 Chevy Truck Altman Easy Latch Kit

PLEASE READ THIS NOTICE BEFORE BEGINNING ANY PHASE OF INSTALLATION!!!! This kit is designed to be installed by someone with a fair amount of mechanical aptitude. However, if you are not comfortable making a cut in your door or altering the items mentioned in these instructions it is advised to seek the help of a professional.

This kit will **NOT** fix door alignment problems. Please adjust your door and get it fitting properly before beginning installation. This is done best with no latches in the door at all. Make the door fit nicely in the hole.

If you have gaskets on your door or door jam that make it hard to close the door or hold the door out this kit will **NOT** help this issue. The best thing to do is get gaskets that allow your door to close flush with the other panels when properly aligned.

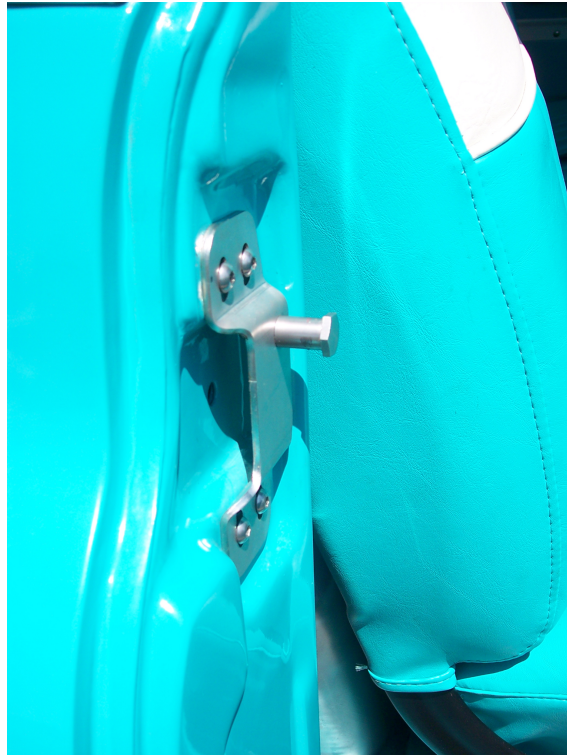
No Altman Easy Latch Kit will allow you to lock your door by pushing forward on the interior handle. It is advised to use electric lock actuators or fabricate your own lock rods.

1. Begin by placing your window in the up position. Remove your interior door handle, window crank, arm rest, interior door plate, door latch, and your exterior door handle.
2. Measure the area to be cut using the supplied dimensions.



Starting at the center of the interior panel mounting hole indicated in the picture above. Measure up the corner of the door $1\frac{3}{8}$ " make a mark. Measure toward the inside of the door $1\frac{3}{8}$ " from the corner and make another mark. Measure toward the outside of the door $2\frac{3}{8}$ " from the corner and make another mark. From those 2 points measure straight up $5\frac{3}{8}$ ". Use a marker to draw your lines according to your measurements. Make sure to tread lightly around the window track as there is little clearance between it and the section you are removing. It is advised to use a cutoff wheel in this particular area as a saw can cut into the track.

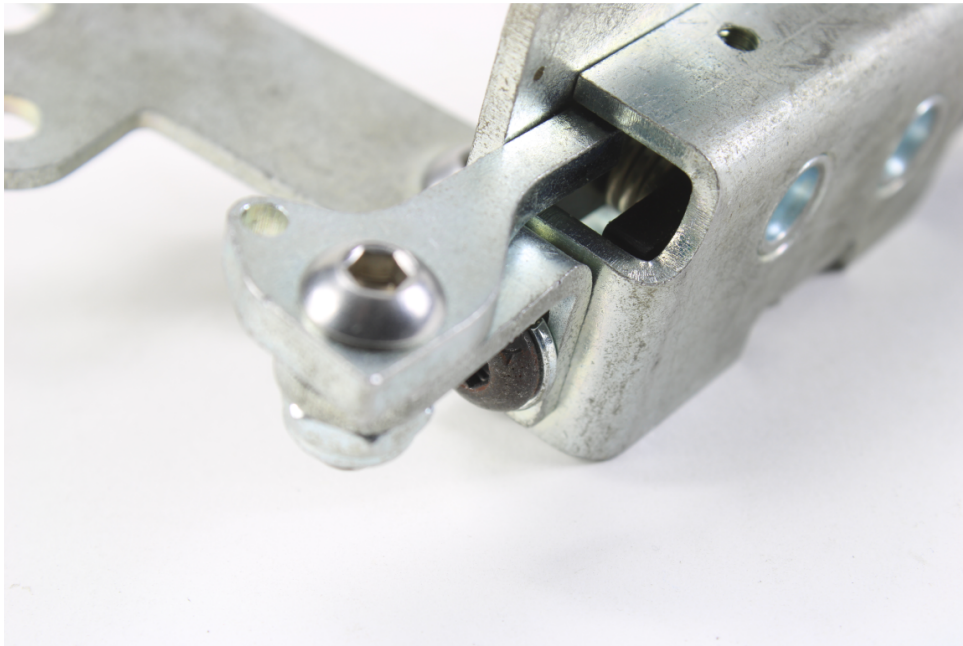
3. Place your new latch kit in place and bolt it into the stock location using the supplied hardware.
4. Next, attach the strap to your new latch kit using the supplied 10-32 bolt and locking nut. Do not over tighten as this is a pivot point and must remain free to move. Make sure to place it on the front side of the new latch kit lever.
5. Latch and trip the new assembly using your finger and the interior handle several times to ensure everything is working smoothly.
6. Replace your exterior door handle and again latch and trip the assembly checking for any problems.
7. Remove your old striker setup and replace it with your new striker plate and bolt. Line it up with the center of your new latch the best you can then slowly close the door.



As you close and open the door, feel for “climbing” or “dropping” and then adjust accordingly. The striker also has in and out adjustment.

8. Once you are satisfied with the way your door opens and closes, reassemble the interior and move to the next door. Don't forget to lubricate all moving parts.

We do not send the latches out with the lock mechanisms attached. If you are not using power lock actuators, there is a risk of the locks vibrating into the lock position. Your doors have locks integrated into the button on the exterior handle. If you have a need for a lock mechanism on the latch, you will find these pieces in a separate bag.



The 90 Degree lock lever bracket mounts to the bottom of the latch using the 1/4-28X3/8 Black Button Head Bolt and Lock Washer. Attach the lock lever to the bracket using the 1/4-20 Stainless Button Head Bolt and Locking Nut. The lock lever should be able to rotate smoothly.

How the lock works:

When the latch is in the fully closed position (Latch will click twice when fully closed). The lock lever should be able to rotate in front of the black actuating mechanism inside the latch, blocking it from moving, thus preventing the latch from opening. The lock lever bracket has a slotted mounting hole to allow adjustment in the lock mechanism.

Exterior Handle:

Many reproduction handles for this model have different options when it comes to the length of the shaft coming from your exterior button. We designed this kit based on the original handle design. If you find that the shaft on your handle is too long, it may be necessary for you to shorten it.