



WWW.NKUKU.COM  
T:+44(0)1803 866847  
E:INFO@NKUKU.COM

---

## ASSEMBLY INSTRUCTIONS

# AKONO DESK LAMP

## EU COMPATIBLE

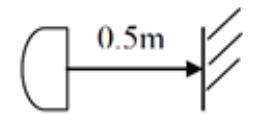
Thank you for purchasing the Akono Desk Lamp.  
Please read the instructions carefully before use to ensure safe and satisfactory operation of this product and retain for reference.

### WARNING

This product is only suitable for connection to a 240V 50Hz supply and is not suitable for a bathroom or use outdoors.

FOR INDOOR USE ONLY

Minimum Distance: This is the symbol which denotes this requirement.



## FIXING INSTRUCTIONS

### ADJUSTMENT

The luminaire can be adjusted in several positions, this is achieved by gently moving the arms to the required position. The lamp head angle can also be adjusted in the same way. Before touching the lamp head, please make sure the lamp is off and cooled down.

To tidy any excess black wire, carefully pull this through towards the lamp base.

### FITTING/REPLACING BULB

Bulb type - 40W Max E27 bulb.

When changing a bulb, always switch off at the mains and allow the bulb to cool before handling. Dispose of used bulbs carefully. Do not exceed the wattage stated.

### FITTING THE PLUG

This luminaire is suitable for both UK and EU plug sockets. On opening, the EU plug is sitting inside the UK plug adapter.

To fit in the UK, make sure the EU plug is securely in place inside the adapter and the screw(s) on the underside of the plug are fixed tightly. This is now ready for use.

To fit using the EU plug remove the screw(s) from the underside of the plug. Open the UK plug and take out the EU plug. This is now ready to be used. Please dispose of the UK plug adapter responsibly.

### CARE & CLEANING

Finish - We recommend cleaning with a soft dry cloth. Do not use abrasive materials as these will damage the finish.

