

Subaru Impreza Spoiler Extension Install Guide

Spoiler installation guide for Subaru Impreza (Hatchback/5DR) 2017+

VM IS NOT RESPONSIBLE FOR ANY DAMAGE TO YOU, YOUR CAR, OR ANY OTHER OBJECT(s) OR PERSON(s). Professional installation highly recommended!!!

Note: You will need to remove the OEM spoiler for this install.

What's Included:

- 1 Spoiler Extension
- 2 VM Brackets (wrapped together)

Hardware:

- 4 #10x32x1/2" Bolts
- 4 #10x32x1/2" Flange Nuts
- 4 #10x32x3/4" Bolts
- 4 #10 washers
- 4 #10 inner lock washers
- 4 Well-nuts

What you need:

- Basic tools
- Drill
- Right angle Drill attachment (see picture in step 4)
- Drill bit to make the pilot hole (1/4" works, a 5/64" was used in this installation)
- 3/8" drill bit
- Thread lock/Loctite IMPORTANT (this prevents the bolts from backing out)
- Marker or pen
- Mounting Tape (3M scotch extreme works well)
- Masking tape (for marking the drill points).
- Helping Hand (makes things a lot easier)

IMPORTANT: LOCTITE IS REQUIRED. 3M TAPE IS REQUIRED.

Preparation

Step 1:
Remove any pre-existing hardware (lips, etc) and clean the wing. This isn't necessary, but helpful.



Step 2:
Remove the top inner panel to reveal securing bolts. There will be 6 bolts in order to remove the wing.



Step 3:
Remove all 6 bolts. There will be two (opposite) hidden behind a cover. Close the hatch and pull the wing off. It's secured with three green clips, so the first time removing it will be harder than normal.



Step 4:
Disconnect the third brake light cable and the window washer fluid line. The third brake light cable might need a knife or flathead screwdriver to remove.



Step 5:
Prepare the wing by cleaning the underside (where the adhesive will eventually mount to)



Installation

Step 1:

Mount the VM brackets to the spoiler extension together using the (4) 1/2" bolts and flange nuts. Place a small amount of mounting tape on each VM bracket. This will help the install process as it will allow you to hold the spoiler in place while you mark the drill points.

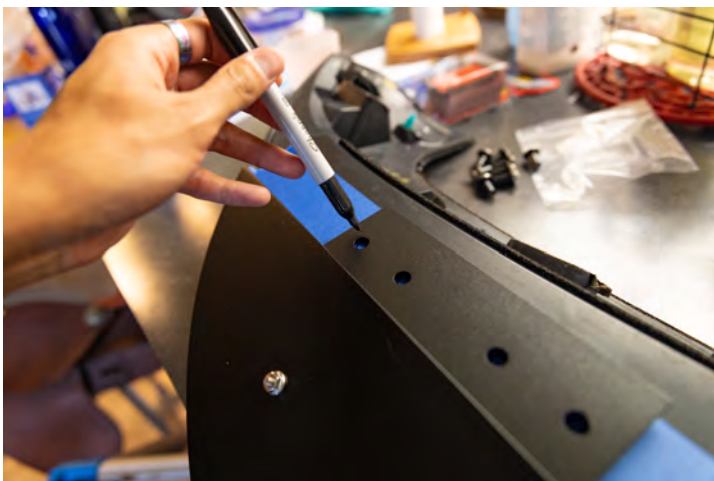
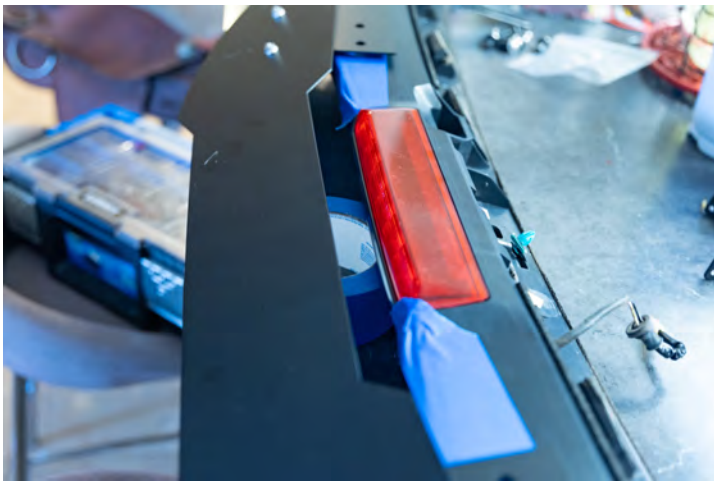
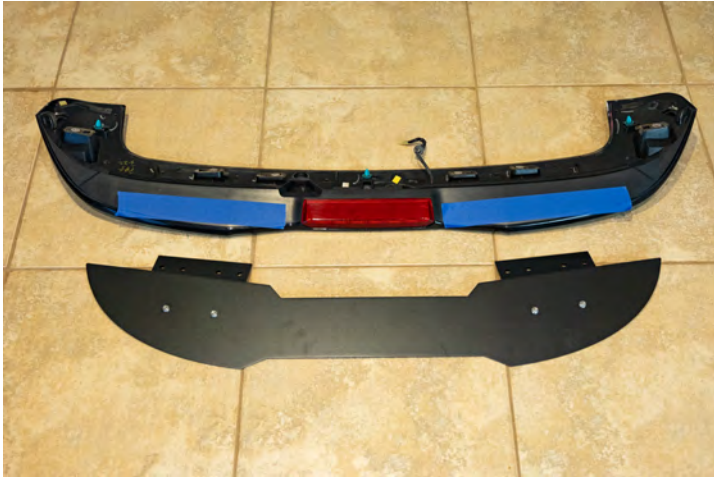


Step 2:

Place the masking tape in the area where the brackets will mount. This is to mark the drilling holes needed for the 4 well-nuts.



Step 3:
Line up and test fit the spoiler extension to the OEM spoiler. Having someone help you with this will make life easier. **CRITICAL:** Once you line it up make sure it doesn't move. Mark the holes on each bracket with a marker or pen. **MARK THE ENTIRE HOLE.** If you want, you can measure each pen-mark to insure that it is in line and where you want it. Remember, measure twice, cut once.

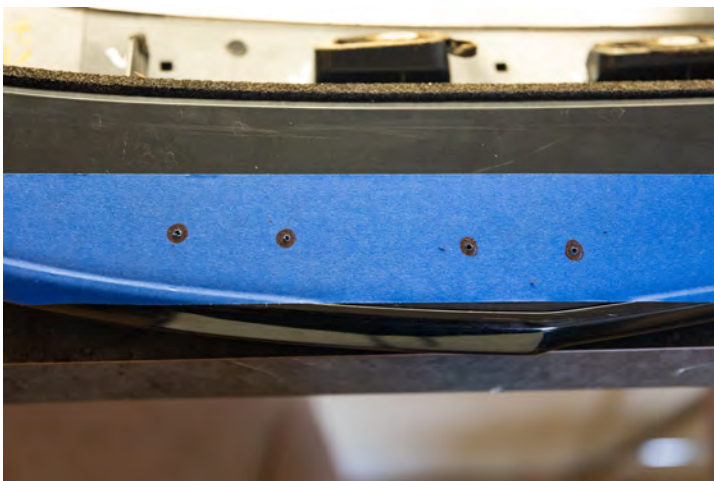


Step 4:
Remove the VM bracket from the spoiler extension and double check that the angle clears the edge of your OEM wing. If it doesn't, go back to step 1. Again, you can measure as many times as you need. You can only drill once.



Step 5:
Drill your pilot holes using a 5/64" bit. Make sure to drill in the CENTER of your mark. Once your pilot holes are drilled, use the 3/8" bit to drill the final holes.

KEEP IN MIND, THE SPOILER IS PLASTIC, so be careful not to drill too deep or you can drill right through your OEM spoiler! **DO NOT USE** anything larger than 3/8" bit! It **NEEDS** to be 3/8" sized holes. Once drilled, remove the tape.



Step 6:

Install the well-nuts into the VM brackets. This will help with tape alignment.

DO NOT TIGHTEN!

After installing the well-nut, place the mounting tape in the areas shown on the diagram below. Mounting tape adds additional support and reduces vibration. **REQUIRED!** Do not skip this step. Once your tape is mounted, remove the well-nuts again.



Step 7:

With your OEM wing and spoiler extension upside down, align the holes on the spoiler extension. Remove the 3M adhesive. One by one, put threadlocker on the well-nuts and insert them into the spoiler extension making sure to keep the holes in alignment. It should look something like Step 6 but with the OEM wing attached. It is important that you threadlock the well-nuts one by one since the threadlock will set very quickly. Hand-tighten these bolts only. If you over tighten them you run the risk of crushing the OEM wing plastic too much.



Step 8:
You're done! All you need to do is reinstall your OEM spoiler. Do this by reversing steps 1-4 in **Preparation.**

