

# GP DAYS E-BRIEFING



TRACK BRIEFING SPA FRANCORCHAMPS





# CONTENT

**03 INTRODUCTION**

**04 GETTING THERE**

**05 PADDOCK OVERVIEW**

**06 BEFORE GETTING ON THE CIRCUIT**

**07 GETTING ONTO THE CIRCUIT**

**08 GETTING OFF THE CIRCUIT**

**09 HOTSPOT: EAU ROUGE**

**10 FULL COURSE YELLOW (FCY)**

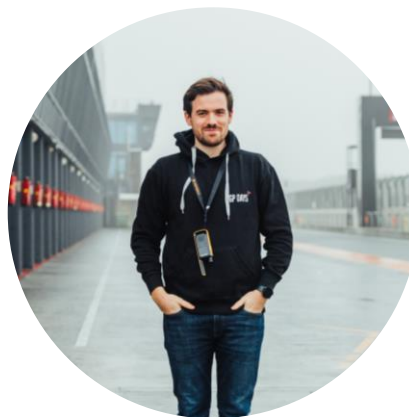
**11 CONTACT**







# INTRODUCTION



## A BRIEF MESSAGE FROM FALK:

“

Please go through this Track Briefing very **carefully**. It's an integral part for everyone staying safe on track! Let's make sure we're going to have an epic day together!

Please reach out anytime in case there are any points that are unclear, or if you have any other questions regarding your Track Day with us at Spa Francorchamps!

[CLICK HERE TO ACCESS VIDEO](#)



# GETTING THERE

► We recommend using the Blanchimont Entrance, especially if you are towing your track tool on a trailer!

## THERE ARE TWO WAYS TO ENTER THE CIRCUIT

### 01 Ster Entrance (not recommended with trailers – max. height 2.30m)

*Address: Route Du Fagnou 4, 4970 Stavelot*

*After going through the tunnel, you will arrive right in the Paddock. Follow the signs for F1 Paddock to get to our check in box, etc.*

### 02 Blanchimont Entrance (accessible for all kind of vehicles)

*Address: Route De l'Eau Rouge 22, 4970 Stavelot*

*Keep on following the access road, it will naturally lead you to the lower Paddock and do not be surprised – it is pretty long! Follow signs for F1 Paddock to get to our check in box, etc.*

## COMMON QUESTIONS

Can I drop of my car / trailer the evening before the Track Day?

- Yes, we will communicate the timing around two days before the Track Day – usually drop-off will be possible between 8:00pm – 9:00pm

Can I stay in the Paddock overnight?

- No, this is not possible under any circumstances. You will have to leave the premises immediately after you dropped of your trailer / car.

When can I access the circuit on the day of the Track Day?

- You will be able to access the premises from 7:30am onwards



*If the check point shown above is manned, simply state you are there for the Track Day and they will open the gate. If there is nobody, wait for a short while, the barrier is usually opened once they see you on the video camera. If not, send us a message to our WhatsApp Group!*

# Paddock Overview

▶ While the Paddock is massive, we will only be in the F1 Paddock “at the top”!

- ▶ Being a Formula 1 track, the Paddock and Facilities are massive at Spa
- ▶ We will be located in the F1 Paddock at the top
- ❶ The GP Days Box (Box #9) will be at the very end of the F1 Paddock. Here the Check-in will take place and you will be able to get yourself some coffee, drinks, snacks and have a rest
- ▶ When parking your cars and trailers, please pay attention to use all the available space efficiently and not blocking any of the pit boxes as they might be booked by other participants
- ❷ Feel free to use the overflow parking on the lower part of the Paddock if you want to have a bit more space for yourself
- ❸ A fuel station is located in the lower section of the Paddock (*card payment only!*)
  - *Usually, it is not worth it to drive to a petrol station outside of the circuit as the prices are pretty much the same*
- ❹ The track-side restaurant (Pit Brasserie) is open throughout the day and will serve lunch
- ▶ Toilets are located on the same level as the Pit Brasserie

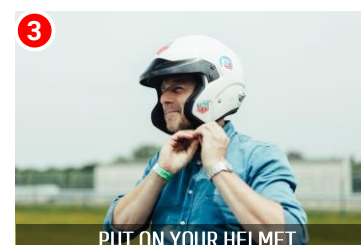
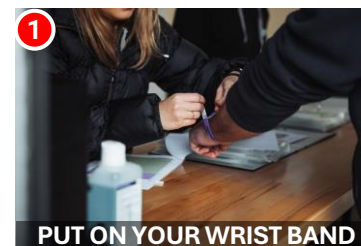




# BEFORE GETTING ON THE CIRCUIT

▶ A little reminder of what has been discussed during the General Briefing!

- 1 Put on your wrist band (all drivers and passengers) you received at check-in
- 2 Please fix numbers to the windscreen (Passenger Side) of your car
  - Remember your number so in case you receive a “technical” or “black” flag you know it is concerning you
- 3 Drivers and Passengers must wear a helmet
  - Put on your helmet and close it before entering the track
  - Jet Helmets (Open Face) are only allowed in closed cars
- 4 Your car must be equipped with a towing eye / hook [either front or back] before entering the track
- 5 Keep your windows closed on track! Should the marshals see your windows are open more than a fingers width on track, you will be black flagged
  - ▶ If you drive a convertible and do not have a full roll-cage, your roof must remain closed
  - Please remember, that the **maximum number of occupants** for each car is set at “2” (One Driver and One Passenger)



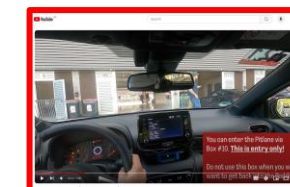
# GETTING ONTO THE CIRCUIT

➤ Have a look in the mirror while getting onto the track. Cars will be approaching fast down towards Eau Rouge!

- ➊ You will be able to enter the pitlane via Pitbox #10 located close to the GP Days Box – **do not use any other way to get into the pitlane!**
  - ➋ Afterwards, turn right and drive through the pitlane until the end, where you will find a marshal who is checking whether:
    - *Your car has your number sticker attached to it*
    - *The driver and passenger are wearing their wrist bands and helmets*
    - *The car has a towing eye fitted*
    - *All windows are closed*
- Please ensure that the marshal is able to see your wrist band as well as the wrist band of your passenger and is not covered by any gloves, clothing, etc.
- Always drive in the left lane of the Pitlane i.e. the “Fast Lane”
- Upon joining the track, check your mirrors frequently, accelerate and stay as close as possible to the wall on the right until you are up to speed. **Do not cross the white line on the left!**
- Please remember, that cars already on the circuit always have the right of way



**CHECK OUT THIS VIDEO TO UNDERSTAND, HOW TO GET FROM THE PADDOCK IN THE PITLANE AND ONTO THE TRACK:**

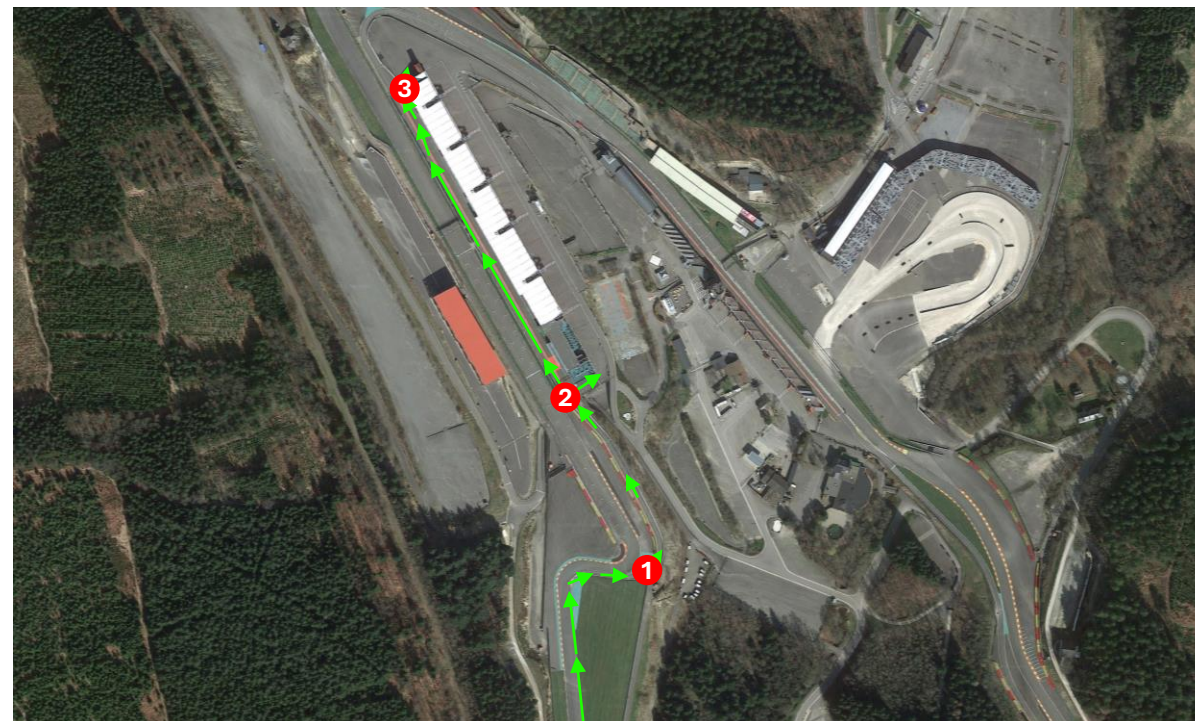




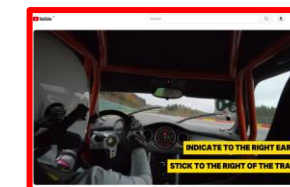
# GETTING OFF THE CIRCUIT

▶ Commit early and use your indicators to show other drivers that you will be entering the pitlane!

- ➊ The entry to the pitlane (“Pit Entry”) is located right at the last corner of the circuit (“Bus Stop”)
- ▶ If you want to leave the track, stick to the right and indicate right to make people aware that you are about to slow down and drive off into the pitlane
- ▶ Stick to the very right (“Inside”) of the Bus Stop chicane at all times **and do not cross the racing line last minute in order to exit the track**
- ▶ There are two ways to get back to the Paddock from the pitlane:
  - ➋ Almost immediately after entering the pitlane, turn right and you will enter the Paddock close to our GP Days Box
  - ➌ Drive to the end of the pitlane and turn right to get to the far end of the Paddock



**CHECK OUT THIS VIDEO TO UNDERSTAND, HOW TO LEAVE THE TRACK AND GET BACK TO THE PADDOCK:**





# HOT SPOT: EAU ROUGE / RAIDILLON

▶ Probably one of the most beautiful, yet infamous corners in the world!

- ▶ High speeds, massive elevation change, and limited visibility make Eau Rouge / Raidillon exciting but also dangerous
- ▶ In Eau Rouge our “Only Overtake with Consent” Rule gets a whole new meaning! **Only overtake another car here if you are 100% sure that the driver has seen you, otherwise slot in behind and overtake on the long straight (“Kemmel Straight”) which is coming afterwards**
- ▶ Take care of each other and always leave enough room for error as things can go wrong here pretty quickly
- ▶ If you encounter a yellow flag in this section, slow down and be extra careful. A broken-down car, debris and more might be hidden behind the crest at the top and only visible at the last moment
- ▶ **Please start your cool-down lap after Eau Rouge** (there is plenty of track left to get rid of the heat in your brakes, etc. afterwards) and keep your momentum as slow cars – especially at the top of Eau Rouge / Raidillon can lead to dangerous situations for fast cars approaching from behind



# SOMETHING SPECIAL: FULL COURSE YELLOW (FCY)

▶ The entire circuit will be „under yellow“ – no overtaking!

- ▶ In case there is an incident on track which requires Marshalls to intervene but does not justify a red flag, the circuit will be put under a Full Course Yellow (FCY)
- ▶ It will be shown on the LED panels at the side of the track as well as at the marshal posts – together with a yellow flag
- ▶ In general, you should treat this like any Yellow Flag but this time, it concerns the entire circuit
- ▶ You may stay on track and do some „cool down“ laps and wait until the track is clear again
- ▶ Once the incident is cleared, the Marshalls will stow away the FCY boards and show a green flag – the LED panels will either be switched off or show green as well. You are good to go!



**Stay Vigilant!**

**Slow Down!**

**Turn on Hazards!**

**Max. 80km/h!**

**No Overtaking!**

**You May Stay on Track!**



# DO YOU HAVE ANY QUESTIONS?

► Let us know if anything is unclear, it is for all our safety!

**THERE ARE NO STUPID QUESTIONS! JUST REACH OUT IF THERE IS ANYTHING WE CAN HELP YOU WITH...**



SEND US AN E-MAIL: [SUPPORT@GP-DAYS.COM](mailto:SUPPORT@GP-DAYS.COM)



CALL US: +49 (0) 201 319 3771 15



JOIN OUR WHATSAPP GROUP: [ACCESS LINK](#)

## FOLLOW US ON SOCIAL MEDIA



[@gpdays1](#)



[@gpdays](#)



[@gpdays](#)



SIGN UP TO OUR [NEWSLETTER](#)

