

# GP DAYS E-BRIEFING



TRACK BRIEFING BILSTER BERG

 [WWW.GPDAYS.COM](http://WWW.GPDAYS.COM) 





# CONTENT

**03 INTRODUCTION**

**04 GETTING THERE**

**05 PADDOCK OVERVIEW**

**06 BEFORE GETTING ON THE CIRCUIT**

**07 GETTING ONTO THE CIRCUIT**

**08 GETTING OFF THE CIRCUIT**

**09 TRANSPONDER AND BOLLARDS**

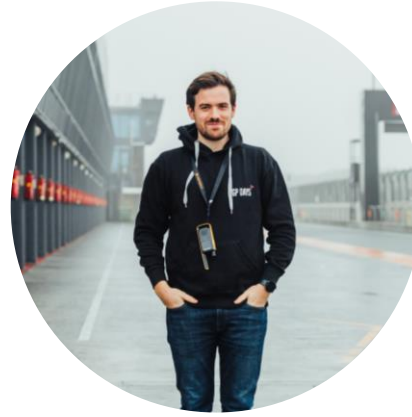
**10 CONTACT**







# INTRODUCTION



## A BRIEF MESSAGE FROM FALK:

“

Please go through this Track Briefing very carefully. It's an integral part for everyone staying safe on track! Let's make sure we're going to have an epic day together!

Please reach out anytime in case there are any points that are unclear, or if you have any other questions regarding your Track Day with us at Bilster Berg!

# GETTING THERE

▶ **Address (Access Road): Bilster Berg 1, 33014 Bad Driburg, Germany**

- ▶ If you use the address above, it should be very easy to find the access road to the circuit
- ① Once you are driving up to the track, keep an eye on the little booth on the left (and barrier). Here, an employee of Bilster Berg will check whether you are on the entry list
- ▶ It is very important that all Drivers, Passengers and Spectators sign our Online Liability Waiver (E-Waiver) as we'll use this to create the entry list
- ② Once you've passed the check point, follow the road, always keep left and drive through the underpass
- ③ You will automatically reach the lower Paddock where we'll be located

## COMMON QUESTIONS

Can I drop of my car / trailer the evening before the Track Day?

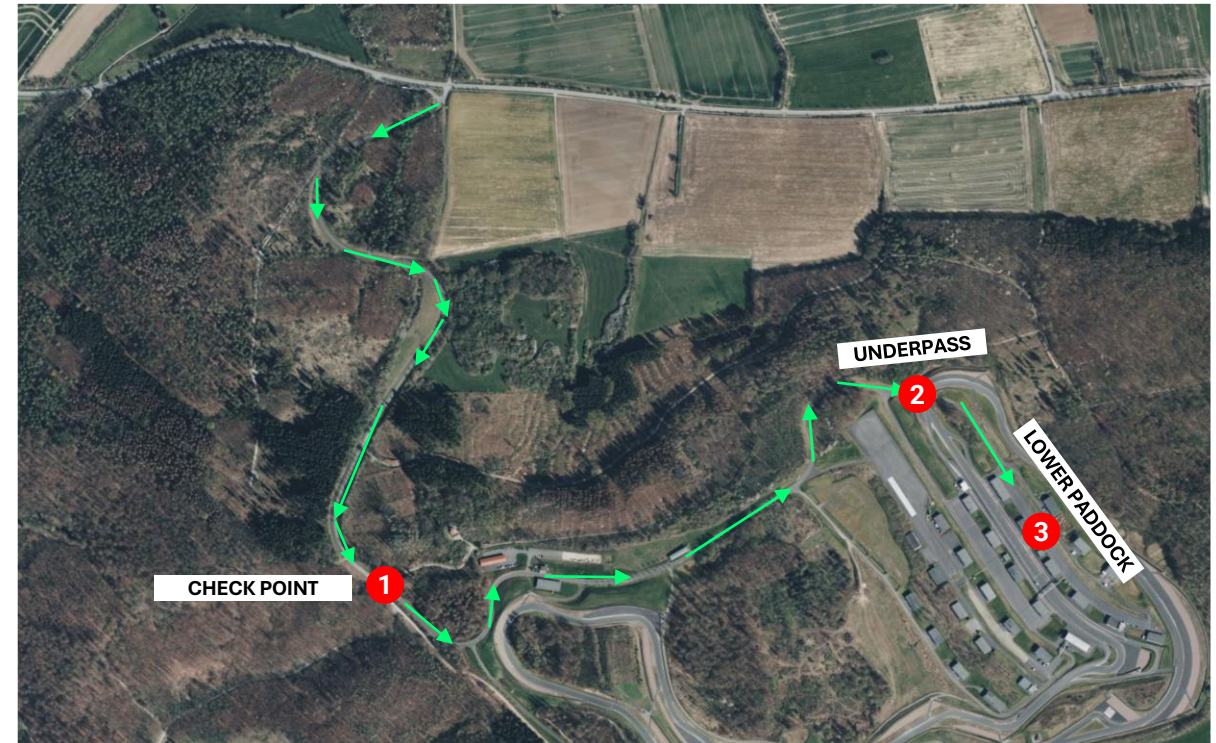
- ▶ *Yes, we will communicate the timing around two days before the Track Day – usually drop-off will be possible between 5:00pm – 7:00pm*

Can I stay in the Paddock overnight?

- ▶ *No, this is not possible under any circumstances. You will have to leave the premises immediately after you dropped of your trailer / car.*

When can I access the circuit on the day of the Track Day?

- ▶ *You will be able to access the premises ~ 7:00am onwards*

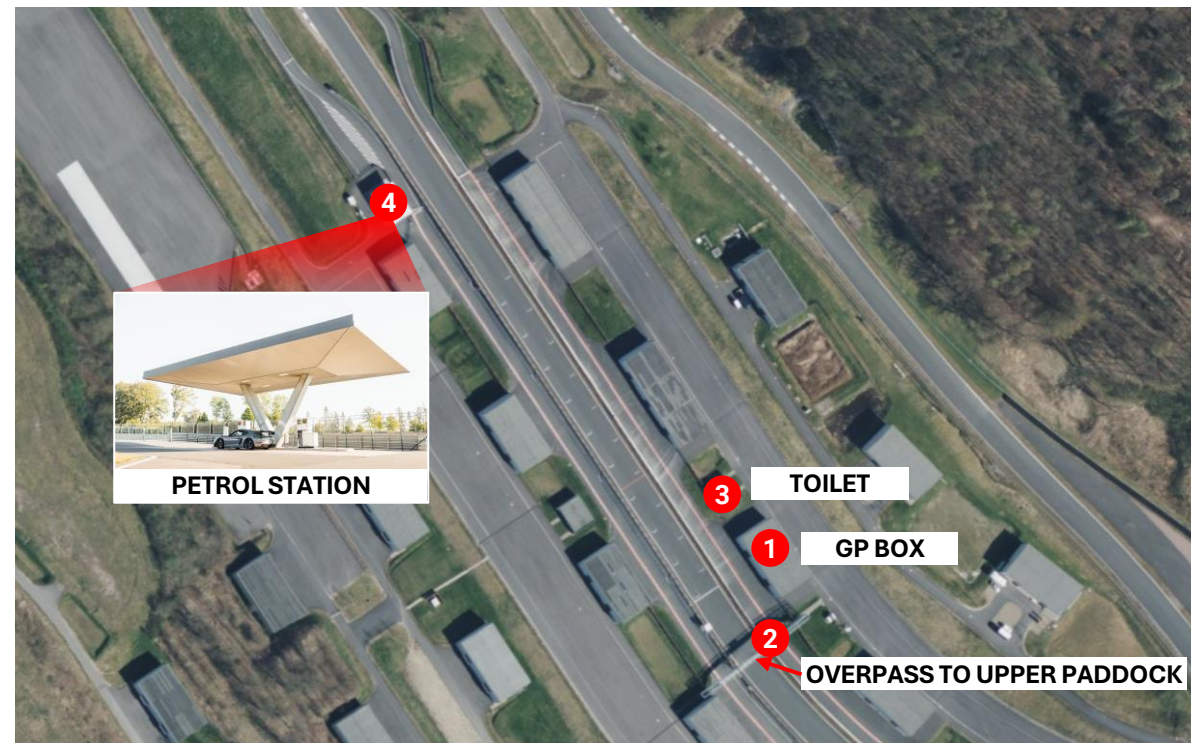




# PADDOCK OVERVIEW

▶ We will be located in the lower Paddock – please stick to the speed limit of 20km/h!

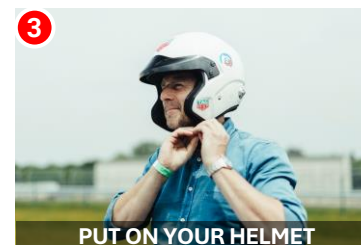
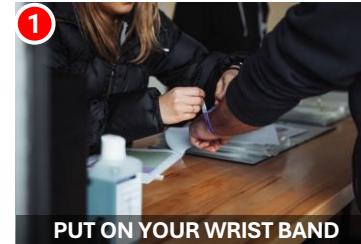
- 1 You will find our Team throughout the day in the GP Days Box (Box B8)
- ▶ Here we will provide coffee, water and little snacks in our box starting in the morning upon check in – free of charge
- ▶ The track restaurant will serve between 12:00pm and 2:00pm (paid by the participants)
- 2 The restaurant (TURN 1) is located on the other side of the track in the “upper Paddock” (oberes Fahrerlager). You can reach the upper Paddock via the Overpass
- 3 Toilets are located in the small building next to the GP Days Box in – if you stand in front of our Box, the toilets will be on the right
- 4 A petrol station is located in the “Upper Paddock” (oberes Fahrerlager). Please remember that this one is card payment only!
- ▶ In order to get to the petrol station, you have to leave our Paddock – the “Lower Paddock” (oberes Fahrerlager) and take the first right turn after the underpass. The petrol station will be on the left
- ▶ Here you will also find a compressor to adjust your tyre pressure



# BEFORE GETTING ON THE CIRCUIT

▶ A little reminder of what has been discussed during the General Briefing!

- 1 Put on your wrist band (all drivers and passengers) you received at check-in
  - 2 Please fix numbers to both sides of your car
    - Remember your number so in case you receive a “technical” or “black” flag you know it is concerning you
  - 3 Drivers and Passengers must wear a helmet
    - Put on your helmet and close it before entering the track
    - Jet Helmets (Open Face) are only allowed in closed cars
  - 4 Your car must be equipped with a **towing eye / hook** (either front or back) before entering the track
  - 5 Install transponder we handed to you at check-in
  - 6 **Keep your windows closed on track!** Should the marshals see your windows are open more than a fingers width on track, you will be black flagged
- ▶ If you drive a convertible and do not have a full roll-cage, your roof must remain closed
- ▶ Please remember, that the **maximum number of occupants** for each car is set at “2” (One Driver and One Passenger)

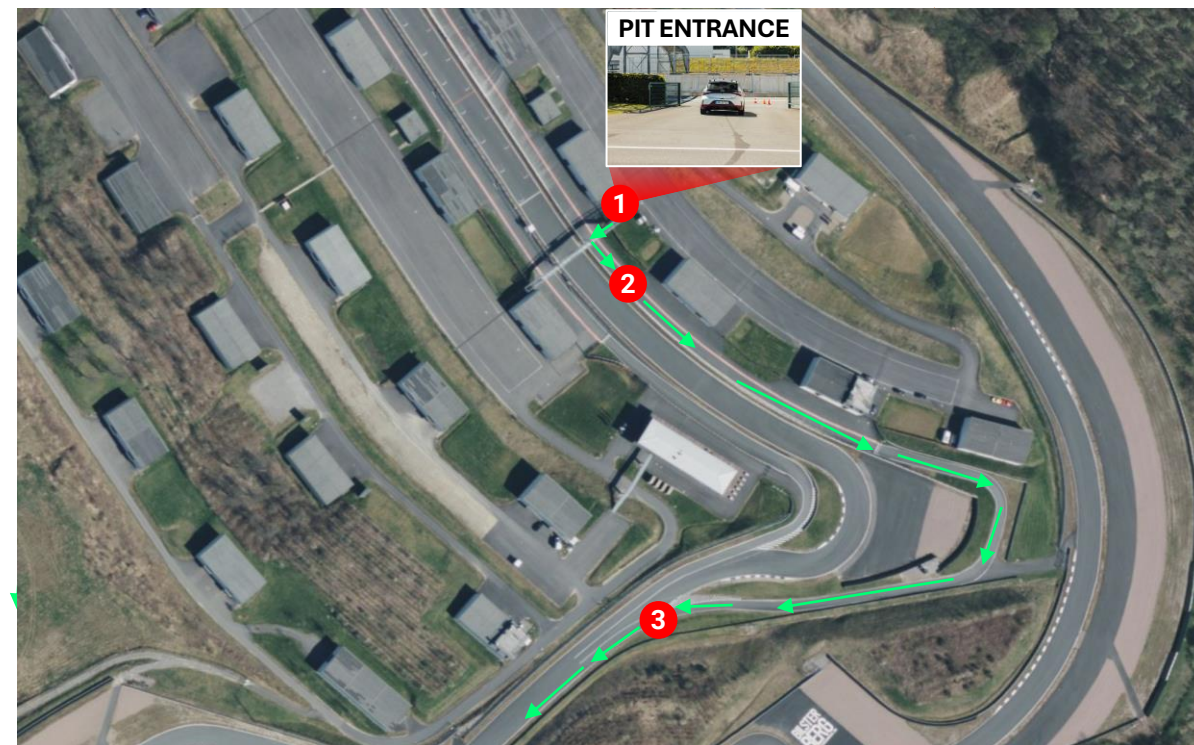




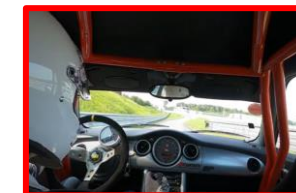
# GETTING ONTO THE CIRCUIT

▶ Have a look in the mirror while getting onto the track. Cars will be accelerating hard out of the first corner!

- 1 You will be able to enter the pitlane via the “Gate” next (on the left) to the GP Box (B8)
  - 2 Turn left. Shortly after, you will see a marshal who will be checking whether:
    - Your Car has your numbers attached to it
    - Driver and Passenger are wearing their wrist bands
    - Your car has a tow hook fitted
    - Your car has a transponder mounted
    - All windows are closed
- ▶ Please ensure that the marshal can see your wrist band as well as the wrist band of your passenger
- 3 Upon joining the track, check your mirrors frequently, accelerate and stay as far left as possible until you are up to speed. Do not cross the white line on the right!
- ▶ Please remember, that cars already on the circuit always have the right of way



**CHECK OUT THIS VIDEO TO UNDERSTAND, HOW TO GET FROM THE PADDOCK IN THE PITLANE AND ONTO THE TRACK:**



# GETTING OFF THE CIRCUIT

▶ Commit early and use your indicators to show other drivers that you will be entering the pitlane!

- 1 If you want to leave the track, stick to the very left in the last corner and indicate left to make people aware that you are about to slow down and drive off into the pitlane
  - 2 The entry to the pitlane is located on the left immediately after the last corner
- ▶ Do not cut across the track to enter the pitlane last second
- 3 Almost immediately after entering the pitlane, turn left through the gate and you'll be able to enter the Paddock
- ▶ Do not drive until the end of the Pitlane. There is no access to the Paddock



**CHECK OUT THIS VIDEO TO UNDERSTAND, HOW TO LEAVE THE TRACK AND GET BACK TO THE PADDOCK:**





# | THINGS TO REMEMBER: TRANSPONDERS AND BOLLARDS

▶ Don not lose your Transponder or hit any of the Bollards – it is going to be expensive!

- 1 In order to measure the noise of your car accurately, you will have to mount a transponder before accessing the track
  - ▶ The transponder has to be mounted on the outside, at the front of your car
  - ▶ We will hand you the transponder at check in and explain you how to install it to your car
  - ▶ Please remember that you will need to hand us a deposit such as your Driver's License or ID-card [This is just so you don't forget to return it after the Track Day]
  - ▶ Don't loose the Transponder! Bilster Berg will charge you €400 [excl. VAT]
  - ▶ If you forget to hand over your transponder after the Track Day, a fee of €50 will be charged. Please remember that participants must pay for the parcel to return the transponder
- 2 You'll find several bollards on the in and outside of almost all corners
  - ▶ Don't touch them or run them over! If you damage a Bollard, the circuit will charge you between € 150 and € 250 [excl. VAT] depending on the type of damage

1  
TRANSPONDER



2  
BOLLARDS



# DO YOU HAVE ANY QUESTIONS?

▶ Let us know if anything is unclear, it is for all our safety!

THERE ARE NO STUPID QUESTIONS! JUST REACH OUT IF THERE IS ANYTHING WE CAN HELP YOU WITH...



SEND US AN E-MAIL: [SUPPORT@GP-DAYS.COM](mailto:SUPPORT@GP-DAYS.COM)



CALL US: +49 (0) 201 319 3771 15



JOIN OUR WHATSAPP GROUP: [ACCESS LINK](#)

FOLLOW US ON SOCIAL MEDIA



[@gpdays1](#)



[@gpdays](#)



[@gpdays](#)



SIGN UP TO OUR [NEWSLETTER](#)

