

GP DAYS E-BRIEFING



TRACK BRIEFING CIRCUIT METTET



CONTENT

03 INTRODUCTION

04 GETTING THERE

05 PADDOCK OVERVIEW

06 BEFORE GETTING ON THE CIRCUIT

07 GETTING ONTO THE CIRCUIT

08 GETTING OFF THE CIRCUIT

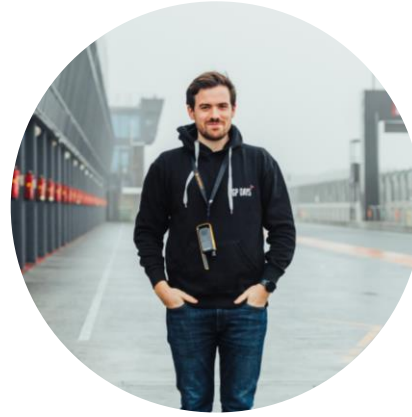
09 HOTSPOTS: TURN 4 & TURN 7

10 CONTACT





INTRODUCTION



A BRIEF MESSAGE FROM FALK:

“

Please go through this Track Briefing very carefully. It's an integral part for everyone staying safe on track! Let's make sure we're going to have an epic day together!

Please reach out anytime in case there are any points that are unclear, or if you have any other questions regarding your Track Day with us at Circuit Mettet!

GETTING THERE

▶ Address (Entrance Gate): Rue Saint-Donat 6 5640 Mettet, Belgium

- 1 Please enter the address above and look out for the circuit's large entrance gate – it is very hard to miss!
 - 2 Once you drive by the gate, follow the small road until you reach the "Paddock Barrier"
- ▶ Here, you need to enter the following code: 0249 (A)
 - ▶ Turn left and go down the ramp to access the Paddock

COMMON QUESTIONS

Can I drop of my car / trailer the evening before the Track Day?

- ▶ Yes, you can access the Paddock from 7:00pm onwards the day before the Track Day to drop of your trailer or car

Can I stay in the Paddock overnight?

- ▶ Yes, you can stay in the Paddock overnight on the day before the Track Day

When can I access the circuit on the day of the Track Day?

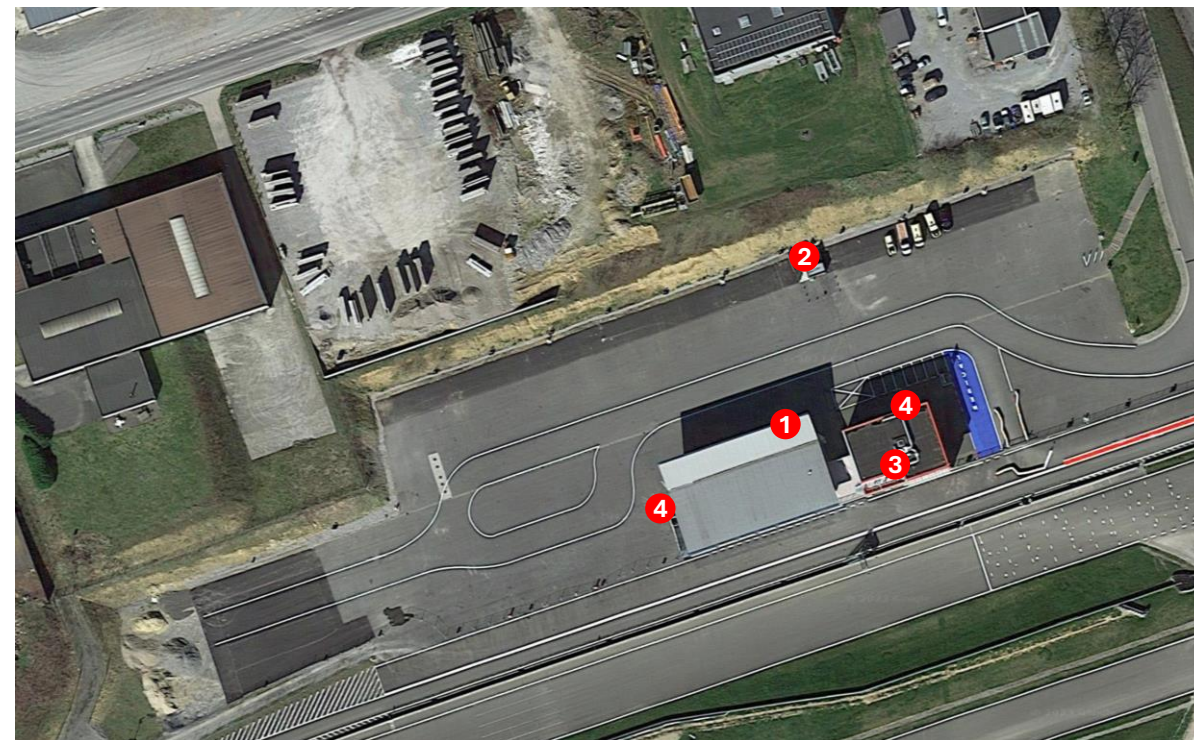
- ▶ You will be able to access the premises from 7:00am onwards



Paddock Overview

▶ Please adhere to the strict speed limit of 20km/h all around the Paddock!

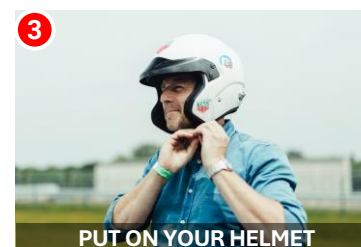
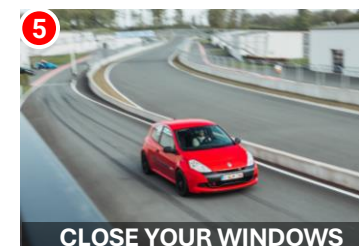
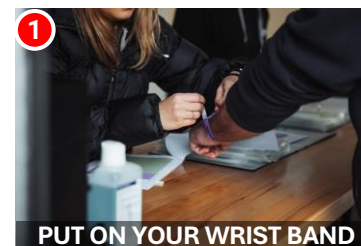
- ❶ You will find our Team throughout the day in the GP Days Box (Box 1)
- ▶ Here, you'll also have access to an air compressor to adjust your tyre pressures and basic tools, in case you left something at home
- ▶ Please remember that you'll be able to get free coffee in our box between 7:30am to 9:00am
- ❷ The little food stall in the Paddock will be open from around 7:30am onwards
- ▶ You can also buy some small snacks like sandwiches, drinks, etc.
- ❸ The restaurant will be open during the day. Feel free to use the terrace – you'll have a great view over the entire circuit!
- ❹ Toilets are located at the front of the main building as well as on the back of the Pitboxes
- ▶ **Please do not park in front of boxes 2 – 5 upon your arrival, they may be booked by other participants**



BEFORE GETTING ON THE CIRCUIT

▶ A little reminder of what has been discussed during the General Briefing!

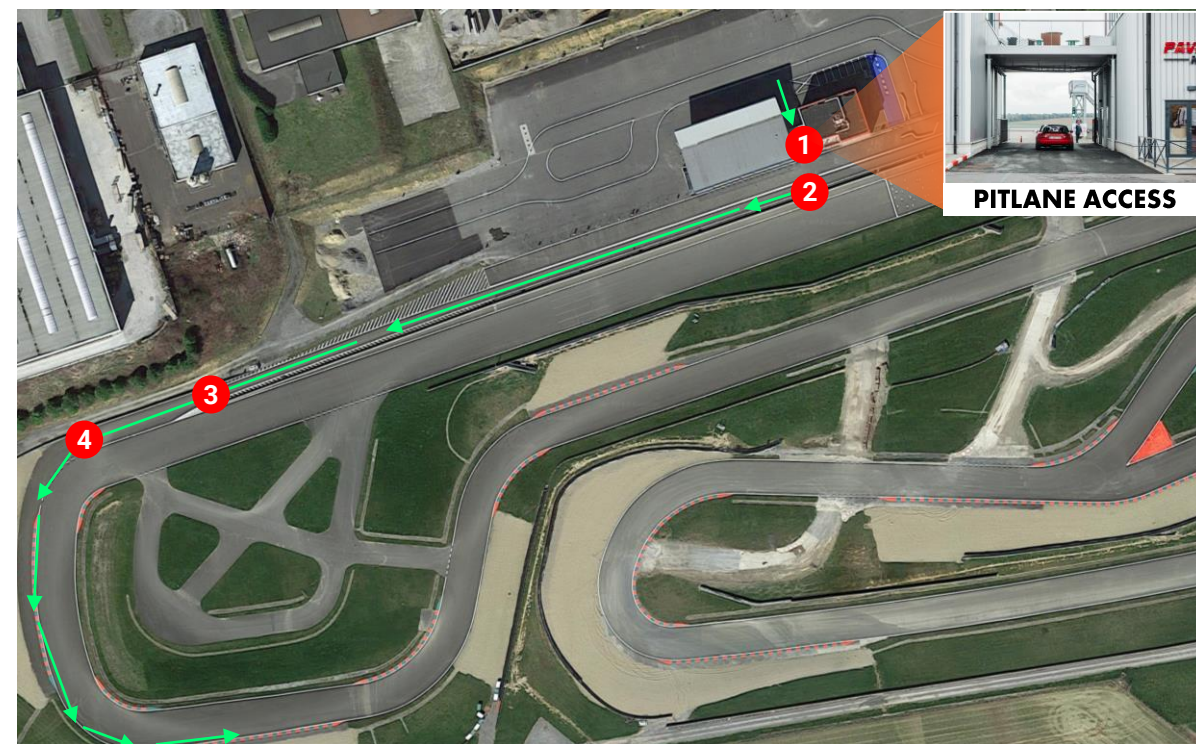
- 1 Put on your wrist band (all drivers and passengers) you received at check-in
 - 2 Please fix numbers to the windscreen (Passenger Side) of your car
 - Remember your number so in case you receive a “technical” or “black” flag you know it is concerning you
 - 3 Drivers and Passengers must wear a helmet
 - Put on your helmet and close it before entering the track
 - Jet Helmets (Open Face) are only allowed in closed cars
 - 4 Your car must be equipped with a **towing eye / hook** (either front or back) before entering the track
 - 5 **Keep your windows closed on track!** Should the marshals see your windows are open more than a fingers width on track, you will be black flagged
- ▶ If you drive a convertible and do not have a full roll-cage, your roof must remain closed
- ▶ Please remember, that the **maximum number of occupants** for each car is set at “2” (One Driver and One Passenger)



GETTING ONTO THE CIRCUIT

▶ Have a look in the mirror while getting onto the track. Cars will be approaching fast on the main straight!

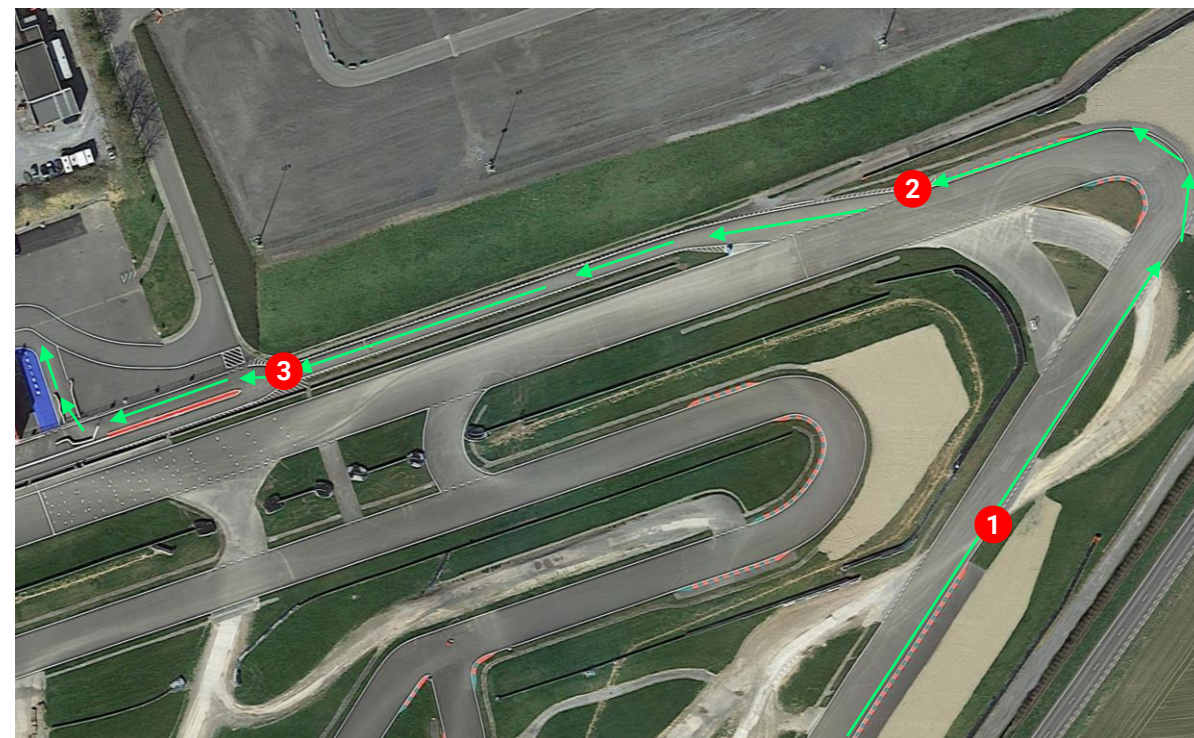
- 1 You will be able to enter the pitlane via the “Tunnel” between the main building and the Pitboxes, located right next to the GP Days Box
 - 2 Afterwards, turn right and drive through the pitlane, where you will find a marshal who is checking whether:
 - *Your car has your number sticker attached to it*
 - *The driver and passenger are wearing their wrist bands and helmets*
 - *The car has a towing eye fitted*
 - *All windows are closed*
- ▶ Please ensure that the marshal is able to see your wrist band as well as the wrist band of your passenger
- 3 Drive until the end of the pitlane
- ▶ Always drive in the left lane of the Pitlane i.e. the “Fast Lane”
- 4 Upon joining the track, check your mirrors frequently, accelerate and stay as far right as possible while joining the circuit. **Do not cross the white line on the left!**
- ▶ Please remember, that cars already on the circuit always have the right of way



GETTING OFF THE CIRCUIT

▶ Commit early and use your indicators to show other drivers that you will be entering the pitlane!

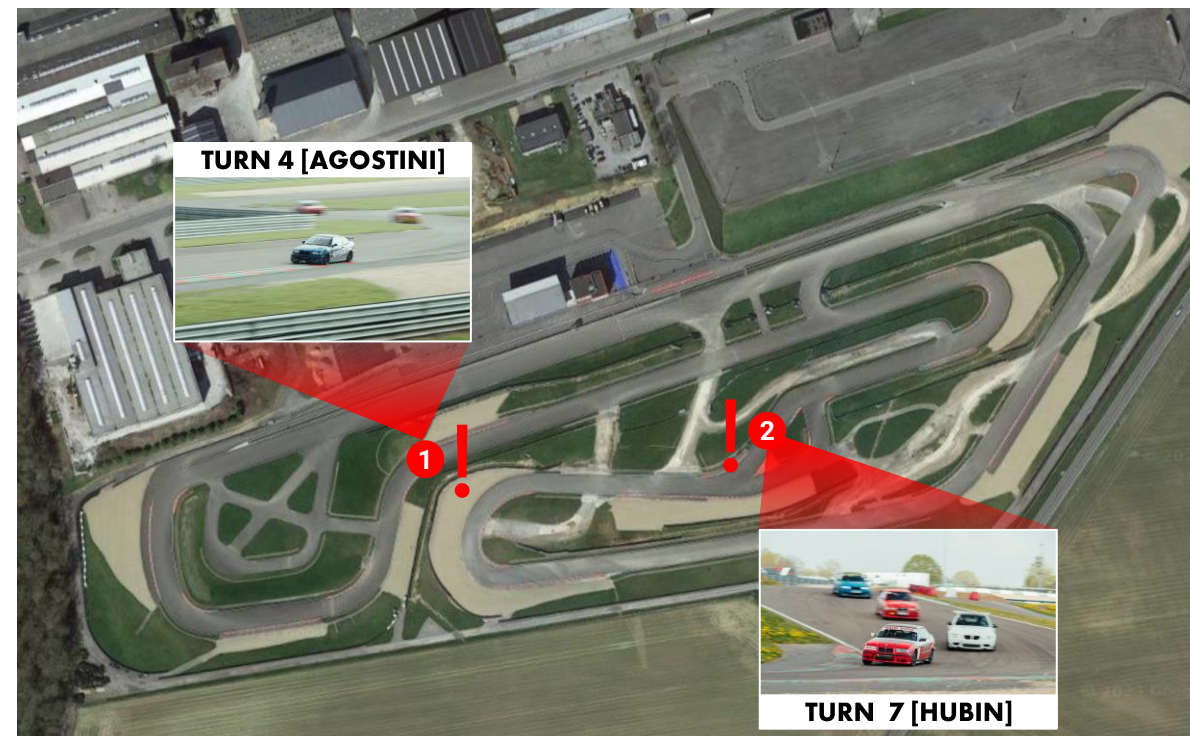
- 1 If you want to leave the track, stick to the right and indicate right to make people aware that you're about to slow down to drive off into the pitlane
 - 2 The entry to the pitlane is located directly after the last corner of the circuit on the right side
- ▶ Stick to the very right of the last corner at all times and do not cross the racing line last minute in order to exit the track
- ▶ Almost immediately after entering the pitlane, keep right and you'll be able enter the Paddock
- 3 A huge sign will indicate the access to the Paddock



HOT SPOTS: TURN 4 EXIT AS WELL AS TURN 7 (CORK-SCREW)

▶ Take extra care while going through these sections!

- ❶ The exit of Turn 4 (Agostini) is particularly tricky in the wet. There's a bump on exit which can easily unsettle the car
 - ▶ We often see that the rear becomes light and cars spinning out towards the inside of the corner – sometimes hitting the barrier! **Be especially careful in rear-wheel drive cars!**
- ❷ We wouldn't describe Turn 7 - Hubin - also called "Cork Screw", as a "danger zone", but rather an extremely cool section of the track
 - ▶ Nevertheless, you should be careful here, especially if you don't know the track very well yet
 - ▶ The Cork Screw is basically a "blind" corner and has already caught out many "Mettet Newcomers" and sent them into the grass



DO YOU HAVE ANY QUESTIONS?

▶ Let us know if anything is unclear, it is for all our safety!

THERE ARE NO STUPID QUESTIONS! JUST REACH OUT
IF THERE IS ANYTHING WE CAN HELP YOU WITH...



SEND US AN E-MAIL: SUPPORT@GP-DAYS.COM



CALL US: +49 (0) 201 319 3771 15



JOIN OUR WHATSAPP GROUP: [ACCESS LINK](#)

FOLLOW US ON SOCIAL MEDIA



[@gpdays1](#)



[@gpdays](#)



[@gpdays](#)



SIGN UP TO OUR [NEWSLETTER](#)

