



MOUNTAIN OFF ROAD ENTERPRISES, LLC.
P.O. BOX 690 DELTA COLORADO 81416
(877)JEEP-A2Z or (877)533-7229
FAX (888)698-5337
E-mail: info@mountainoffroad.com
www.mountainoffroad.com

INSTALLATION INSTRUCTIONS for JKDBT12 DUAL BATTERY TRAY



HARDWARE KIT:

- 1- DUAL BATTERY TRAY
- 1- BATTERY HOLD DOWN BRACKET
- 1- 5/16" -18 ALL THREAD X 7-7/8" LONG
- 1- 5/16"-18 NYLOCK NUT
- 1- 5/16" FLAT WASHER
- 2- Plastic Nut Caps

NOTES: Does not include wiring. , Designed to fit Optima Group 34 or 34/78 batteries or as long as battery dimensions do not exceed 10.3L x 6.8W x 7.9H

Please read and understand all instructions before beginning the installation of the Dual Battery Tray. Please read the terms and policies on the back of these instructions.

The **JKDBT12** Dual Battery Tray is designed to fit the following Jeep® vehicles: 2012 to Current JK Wranglers equipped with 6-cylinder engines (3.6L).

STEP 1: With the Jeep® on flat level ground, apply the parking brake. Disconnect battery terminals and remove ground from stud on inner fender.

STEP2: Remove Air filter box top and filter by loosening hose clamp. Pull intake tube off of box. Remove vacuum hose from side of box. Pull straight up on bottom of air filter box and remove from factory battery tray assembly. (see figure 1)

STEP 3: Remove bolt holding the Power Steering Res. and move out of way.(see figure 1)

STEP 4: Disconnect all connectors (shown in figure 2) and disconnect the push in plastic wiring harness retainers holding all wiring harnesses into the battery box.

STEP 5: Remove fuse box from battery tray by pressing on the 4 tabs in each corner. Then lift up fuse box being careful not to pull wiring to far. Carefully release levers that retain Power Distribution wire harnesses and carefully disconnect all connectors from fuse box. Then move it out of way. Remove Battery hold down and remove battery.(see figure 3)



STEP 6: Remove 4 bolts and 3 nuts that retain the OEM battery box and remove box from Jeep. (Note: there is a plastic retainer that is under the wheel well that will need to be removed. (see figure 4)

STEP 7: With the battery box removed the OEM battery box will need to be cut to reuse the air box area & fuse box mounting area. Cut box as shown per figure 5. Grind front ear and side mount back approximately 3/8" and slot hole 3/8" to move fuse box/air box toward the grill. (see figure 6)

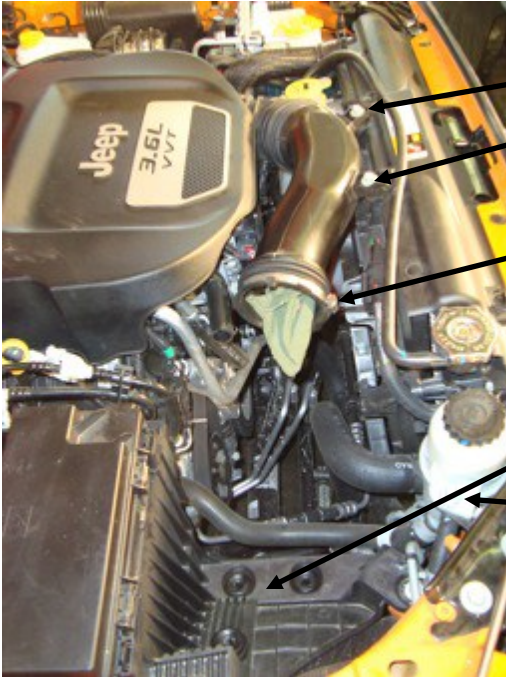
STEP 8: Install the new Dual Tray onto the firewall and start all the original hardware ,3 nuts and the 1 bolt through the access hole. Leave loose until installing OEM cut off fuse box / air box portion.

STEP 9: Install the section of the OEM battery box which was cut off in step 7 using the original hardware. With both the Dual Battery Tray and OEM fuse box / air box in place and settled in tighten all factory hardware installed to this point.

STEP 10: Move the Purge Valve Solenoid from the wheel well side of the battery box to the engine side by removing clips holding on the center section tubing. Remove center tubing assembly for the solenoid. Reassemble solenoid on the engine side of the battery box side by pushing back in the retainer clips previously removed. Slide on solenoid on post of Dual Battery Tray. (see figure 7)

STEP 11: With the 3 nuts of the Dual Battery Tray tight on the firewall, mark studs protruding through the OEM nut and cut off studs flush with the end of the nut. Place on supplied plastic nut covers to protect battery from rubbing.

STEP 12: Reinstall the wiring harnesses to the fuse box by camming over all the connectors. Snap fuse box back onto the OEM mounting bracket. Reinstall Air filter box and Power Steering Res. in the original position. Install both batteries into tray and retain using the supplied hold down bracket, 5/16" all thread, 5/16" washer, and 5/16" nut. Reconnect all connectors that were disconnected in Step 4. Reconnect the batteries. This can be done in many ways and we recommend having a electrical specialist do this for you. You can hook up one of the batteries using the OEM cables so the Jeep is drivable if the need arises. Double check that you have all connectors hooked up and tight. Happy Wheelin.



1 Remove two air intake hose bolts.

2 Loosen hose clamp on air filter box.

3 Wiggle and lift bottom of air filter box to totally remove from battery area.

4 Remove bolt on Power Steering Reservoir

Figure 1



Remove all wire harness plastic retainers out of battery box using a forked tool. There are more than what is shown here.

Figure 2

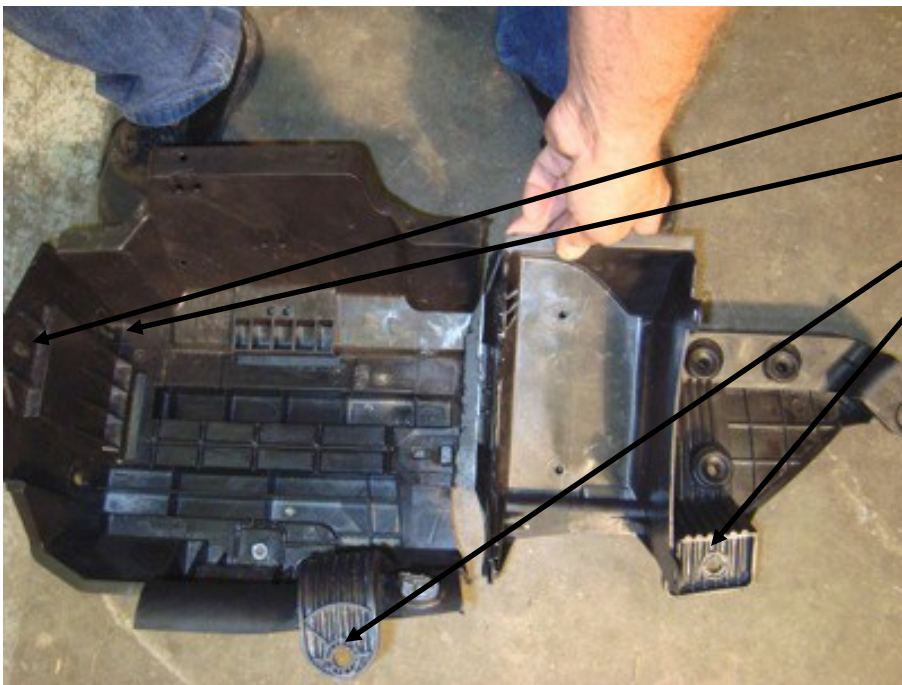


1. Remove fuse box from battery box by unlocking four post locking tabs.

2 Remove each wire harness from fuse box by unlocking red safety lock and swing lock.

3 Remove fuse box from area.

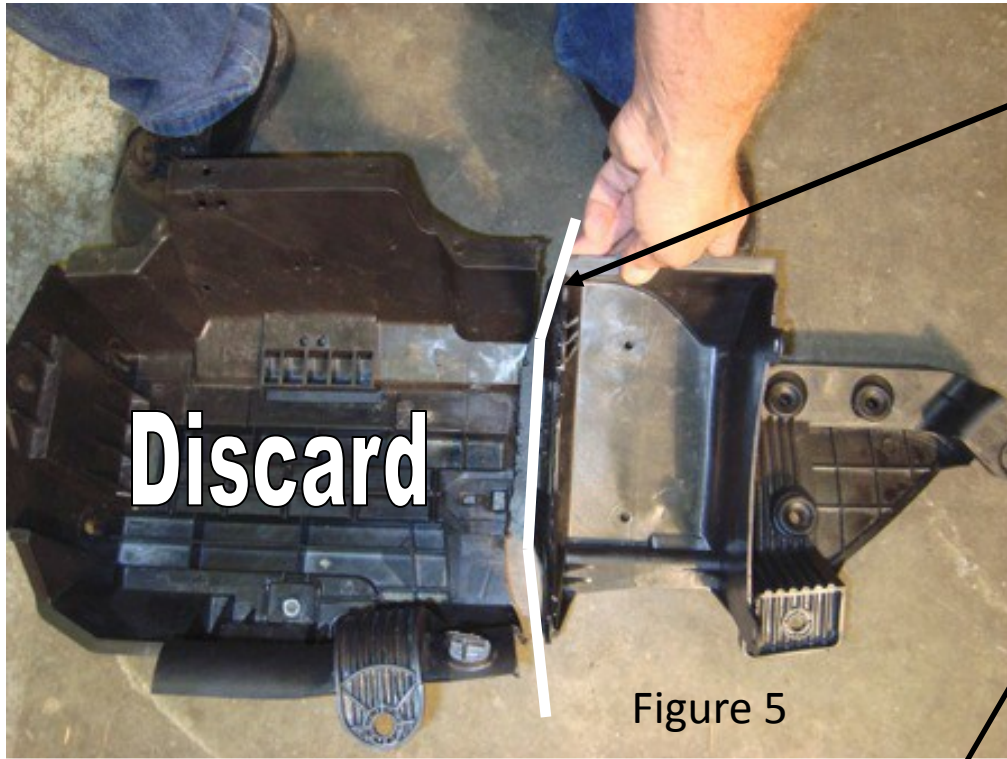
Figure 3



1. Remove 3 nuts on firewall

2. Remove 4 bolts that hold in OEM battery tray

Figure 4



Cut Line. Be sure to leave all 4 plastic posts of the Fuse Box

Notch for 5/16" nut welded to battery tray

Figure 5

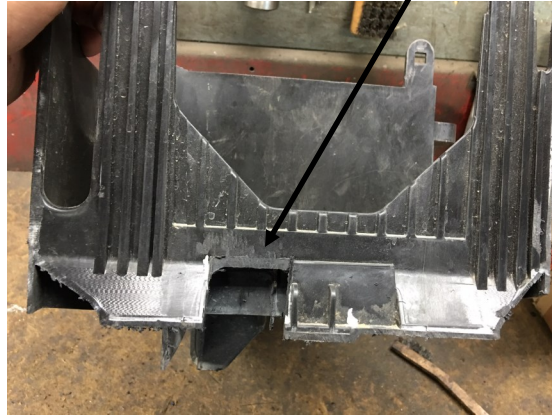
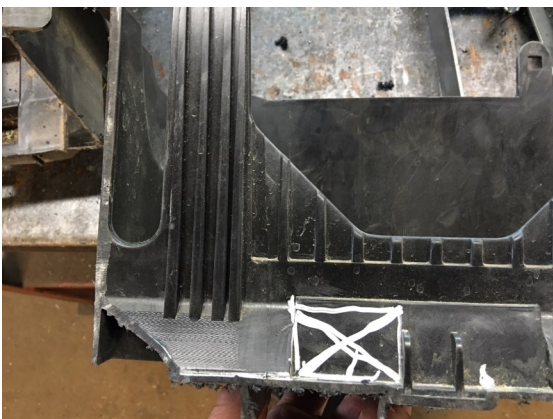


Figure 6

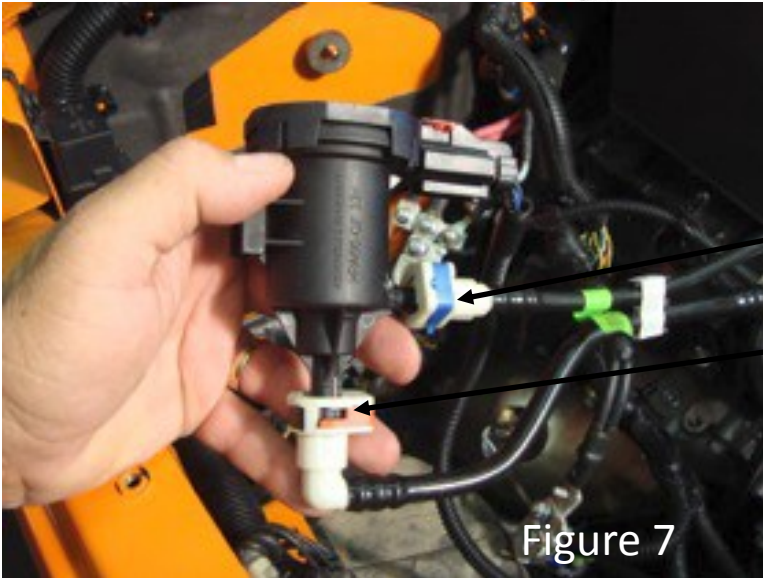


Figure 7

Remove colored clips from white collars.
Remove middle hard hoses. Move the Purge Valve Solenoid to engine side of battery box.
Reattach colored clips to white collars creating a shorter assembly.

TERMS-POLICIES:

FIT and **TOLERANCES:** M.O.R.E.™ parts are the results of countless hours of research, testing, fitting and refining. Jeep® frames have a wide tolerance on bolt hole centers from frame to frame. This is why M.O.R.E.™ has installed “slots” in which to mount them. In addition to the factory tolerances, most people install other than factory equipment such as suspension lift kits, skid plates, different transfer cases etc. M.O.R.E.™ has done the best job we can to insure that our parts fit with all of the possibilities. However, you may find it necessary to grind, elongate, bend, or force these parts to fit on your rig. Please use common sense when installing these parts and let us know how we can improve them.

DAMAGE CLAIMS: All orders are carefully packed, however, mishandling by the carrier can result in damage. The carrier has the responsibility for the shipment from the time it leaves our warehouse until it is delivered to you. All claims for lost or damaged goods should be reported to the carrier, not to **M.O.R.E.™** LLC.

RETURNS: No returns will be accepted without prior permission from **M.O.R.E.™** LLC. After you receive a Return Goods Authorization (RGA) number, merchandise must be returned prepaid and insured. A claim must be made within 30 days from receipt of merchandise. The original invoice or a copy with the RGA number written on must accompany all returns. A 20% restocking fee will be charged on all parts returned for credit or refund unless merchandise is proven to be defective or was shipped wrong by **M.O.R.E.™** LLC. *No merchandise will be issued credit or refund if it has been installed, modified, used in any way or is in unsalable condition.*

WARRANTY: All merchandise is warranted to be free from defects in materials and workmanship prior to installation. Any alteration or improper use will void this warranty. Because all parts we sell are intended for use in heavy-duty applications it is not possible to warrantee or guarantee the performance of any items. **M.O.R.E.™** LLC. products and the products manufactured by others, which we sell may be subject to an infinite variety of conditions due to the manner in which they are used, serviced and/or installed. Purchasers and users of such products rely upon their own judgment as to the suitable use selection, service and installation of such products.

PRODUCT DISCLAIMER: Modification of your vehicle to enhance performance with parts sold by **M.O.R.E.™** LLC. may create a dangerous condition which could cause serious bodily injury, and the buyer hereby expressly assumes all risks associated with any such modifications. All parts sold by **M.O.R.E.™** LLC. are for racing or off road use only. Mountain Off Road Enterprises LLC. will not accept responsibility for personal injury or property damage arising from the failure of any parts manufactured or sold by **M.O.R.E.™** LLC.

Specifications are subject to change without notice.

Jeep®, AMC®, CJ®, YJ®, TJ®, LJ®, JK®, Wrangler®, are registered trademarks of DaimlerChrysler. **M.O.R.E.™** is not affiliated with DaimlerChrysler.

M.O.R.E.™, BombProof™, S.R.S.™, SlipLoc™, DoubleJointed™, RockProof™, are trademarks used by **Mountain Off Road Enterprises, LLC.** These instructions and the M.O.R.E.™ logo are copyright©, 1999-2009.