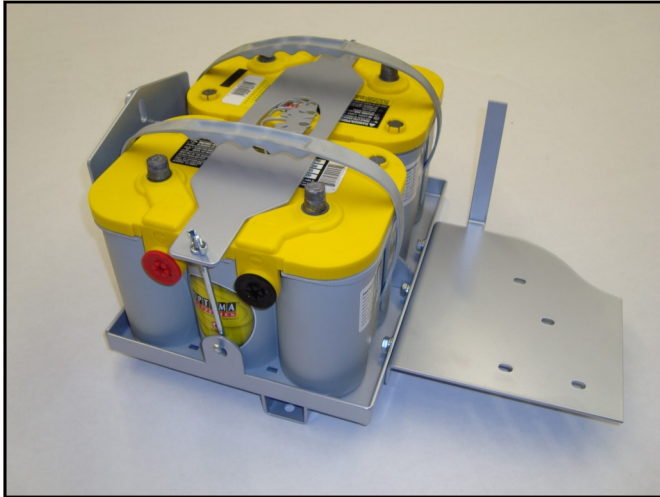


**MOUNTAIN OFF ROAD ENTERPRISES, LLC.**  
P.O. BOX 690 DELTA COLORADO 81416  
**(877)JEEP-A2Z or (877)533-7229**  
FAX (888)698-5337  
E-mail: [info@mountainoffroad.com](mailto:info@mountainoffroad.com)  
[www.mountainoffroad.com](http://www.mountainoffroad.com)

## INSTALLATION INSTRUCTIONS for JKDBT0709 DUAL BATTERY TRAY



### HARDWARE KIT:

- 1- DUAL BATTERY TRAY
- 1- POWER DISTRIBUTION/PCM BRACKET
- 1- BATTERY HOLD DOWN BRACKET
- 3- 5/16-18x1 BOLT
- 5- 5/16" NUTS
- 8- 5/16" FLAT WASHERS
- 2- 5/16 "J" BOLT

NOTES: Does not include wiring. , Designed to fit Optima class 34 or 34/78 batteries. OEM batteries will also work but may require longer hold down "J" bolts.

Please read and understand all instructions before beginning the installation of the Dual Battery Tray. Please read the terms and policies on the back of these instructions.

The **JKDBT0709** Dual Battery Tray is designed to fit the following Jeep® vehicles: 2007 to Current JK Wranglers equipped with 6-cylinder engines (3.8L).

**STEP 1:** With the Jeep® on flat level ground, apply the parking brake, Disconnect battery terminals and remove ground from stud on inner fender. ( see figure 3 )

**STEP 2:** Remove Air filter box by loosening hose clamp , pull intake tube off of box ,remove vent hose from side of box and pull straight up. ( see figure 1 )

**STEP 3:** Remove bolt holding the Power Steering Res. And move out of way.( see figure 2 )

**STEP 4:** Disconnect all connectors shown in FIGURE 3.

**STEP 5:** Disconnect large connector coming from PCM. Carefully release tabs that retain Power Distribution/PCM to bracket and lift up on Power Distribution/PCM . Carefully disconnect all connectors from Power Distribution/PCM and move out of way. Remove Battery hold down and remove battery.( see figures 4,5 & 6).

**STEP 6:** Remove 4 bolts and 3 nuts that retain the OEM battery box and remove box from Jeep. ( Note: there is a plastic retainer that is under the wheel well that will need to be removed.

**STEP 7:** The OEM battery box will need to be cut to reuse the airbox & PCM mounting. Remove the Power Distribution/PCM mounting bracket and cut box per figure 7 & 8.

**STEP 8:** Install the new Dual Tray onto the firewall and start all the original hardware ,3 nuts and the 1 bolt through the access hole. ( see figure 9 &10 ) While tightening hold the tray to the DS to allow clearance between battery and relay.



**STEP 9:** Install the section of the OEM battery box which was cut off in step 7 using the original hardware but **DO NOT TIGHTEN**. Install the new Power Distribution/PCM bracket over top of the OEM section you just installed. Using the included 5/16" bolts, nuts, & washers attach the Power Distribution/PCM bracket to the Dual Battery tray, **DO NOT TIGHTEN**. Now install the OEM Power Distribution/PCM mounting bracket start all the original bolts and then tighten all the mounting bolts. ( see figure 11,12 & 13 )

**STEP 10:** Reinstall the Power Distribution/PCM by reconnecting all the connectors and snap it back onto the mounting bracket. ( see figure 14 ) Install both batteries into tray and retain using the hold down bracket and "J" Bolts. Position Sensor over tab on bracket as shown in figure 15. Reconnect all connectors that were disconnected in Step 4. Reinstall Air filter box and Power Steering Res. In the original position. Reconnect batteries, This can be done in many ways and we recommend having a electrical specialist do this for you. You can hook up one of the batteries using the OEM cables so the Jeep is driveable if the need arises. Double check that you have all connectors hooked up and that the heater hoses, etc. will not rub on anything sharp.

FIGURE 1

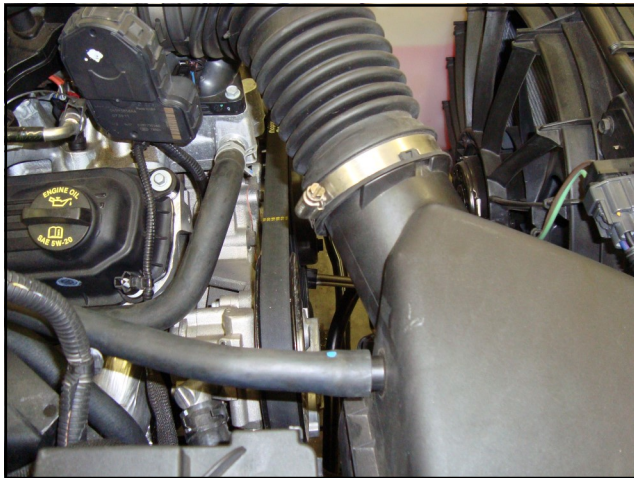


FIGURE 2





FIGURE 3

Disconnect all connectors shown in pictures.

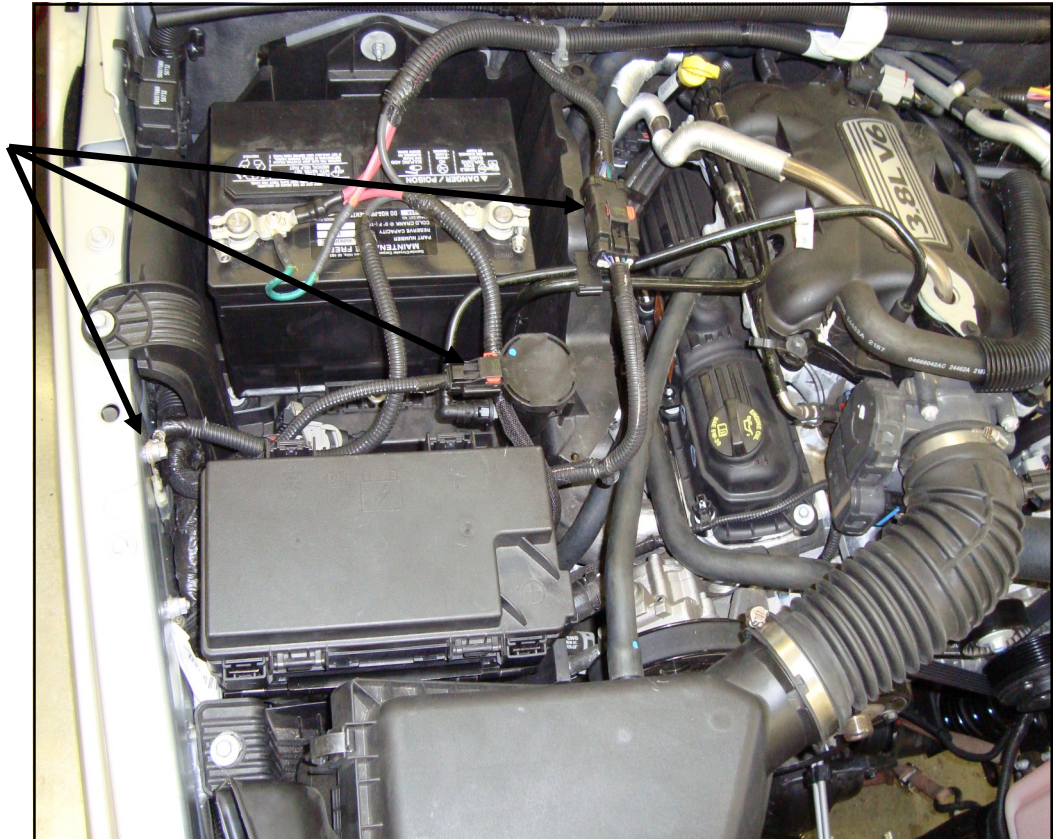


FIGURE 4

FIGURE 5

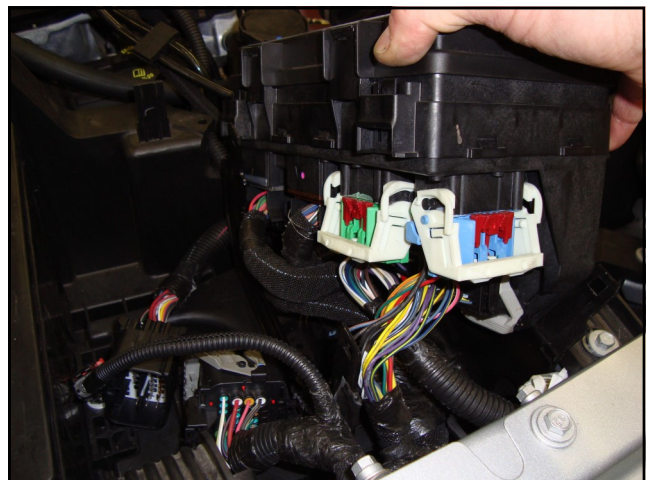
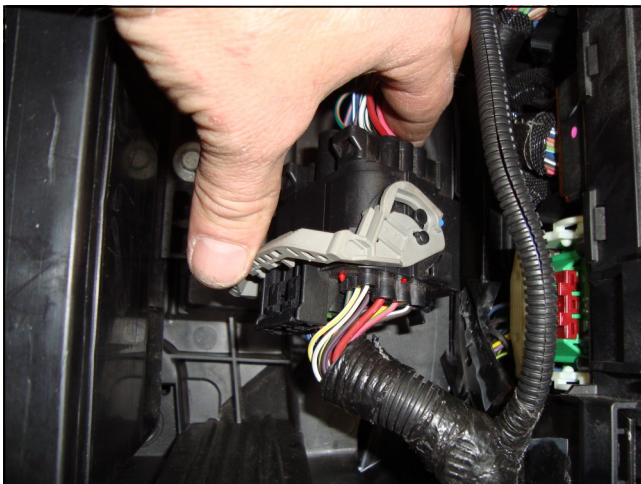




FIGURE 6

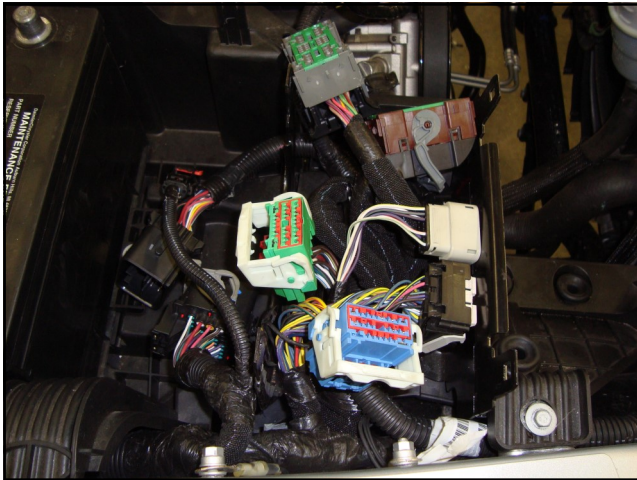


FIGURE 7

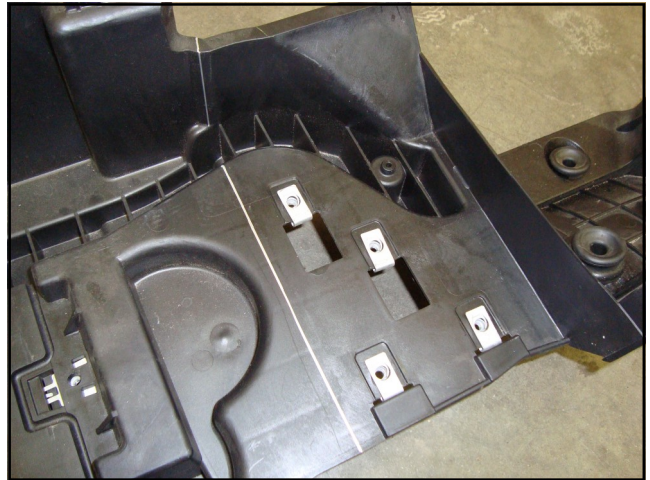


FIGURE 8

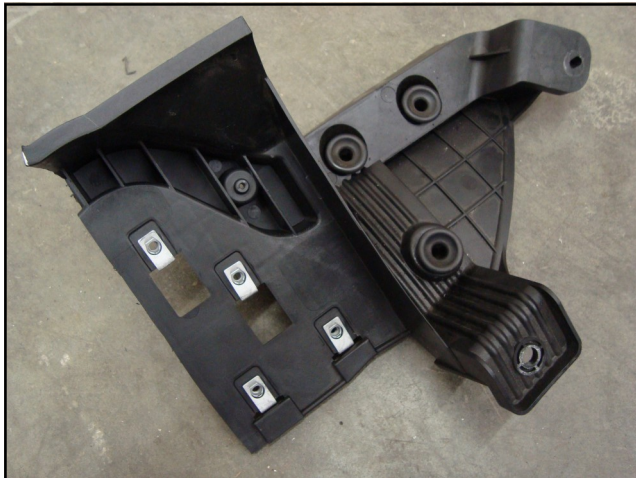


FIGURE 9





FIGURE 10

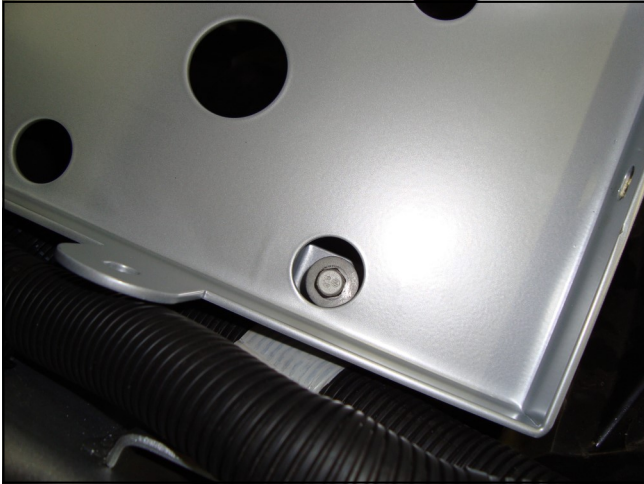


FIGURE 11

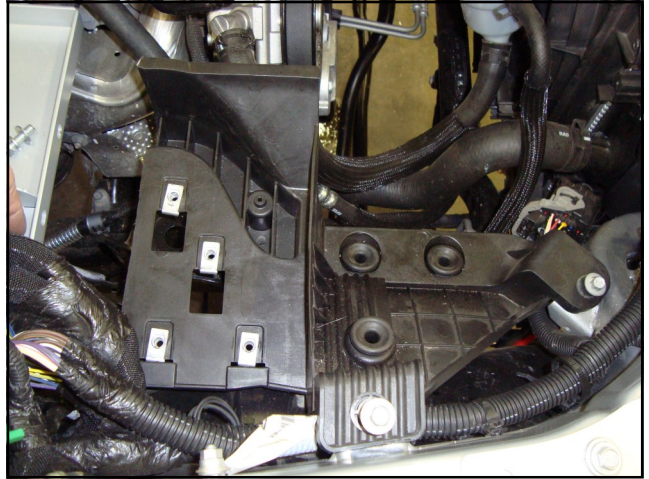


FIGURE 12

FIGURE 13

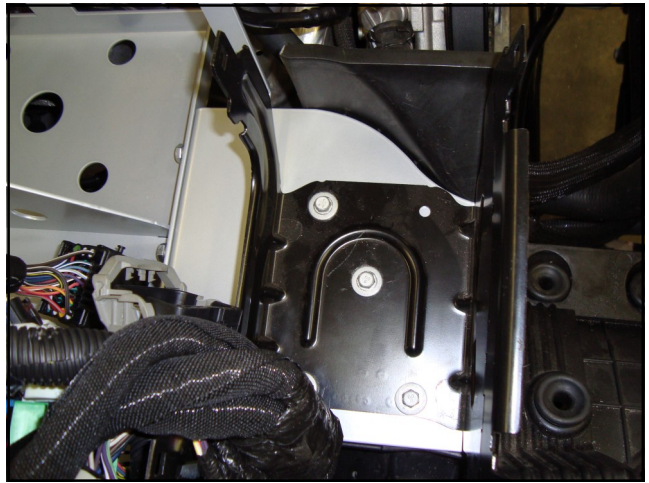
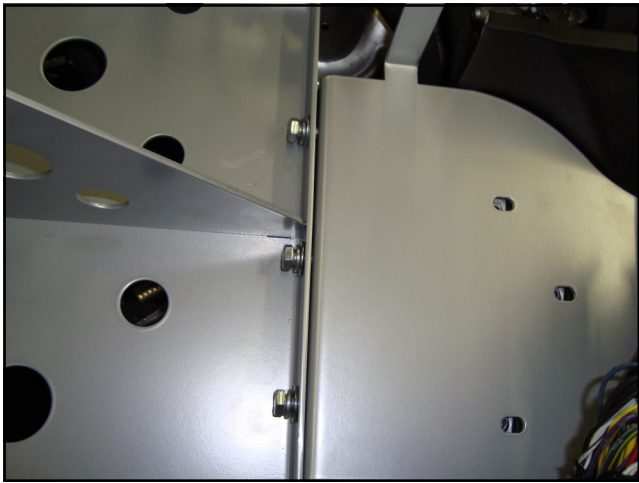
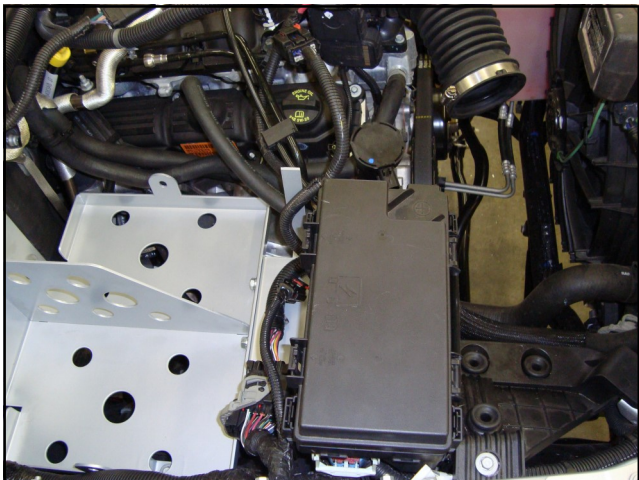
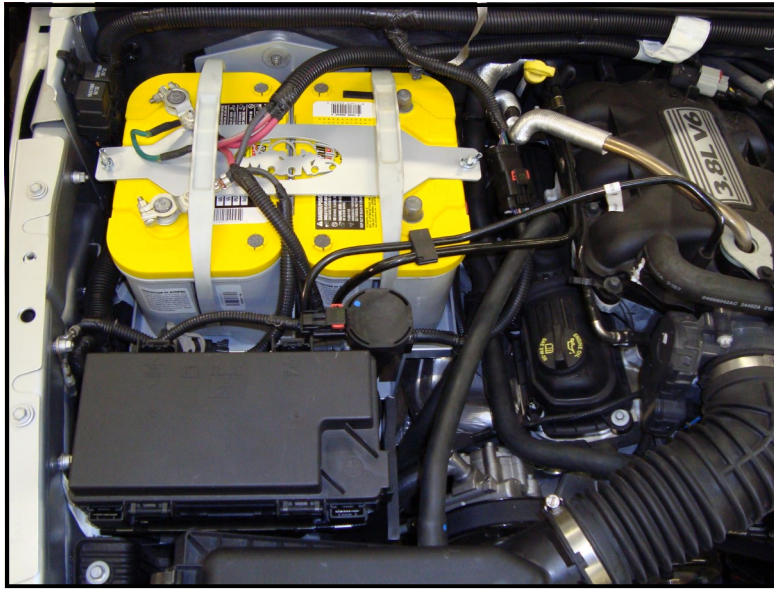


FIGURE 14

FIGURE 15





TERMS-POLICIES:

**FIT** and **TOLERANCES:** M.O.R.E.™ parts are the results of countless hours of research, testing, fitting and refining. Jeep® frames have a wide tolerance on bolt hole centers from frame to frame. This is why M.O.R.E.™ has installed “slots” in which to mount them. In addition to the factory tolerances, most people install other than factory equipment such as suspension lift kits, skid plates, different transfer cases etc. M.O.R.E.™ has done the best job we can to insure that our parts fit with all of the possibilities. However, you may find it necessary to grind, elongate, bend, or force these parts to fit on your rig. Please use common sense when installing these parts and let us know how we can improve them.

**DAMAGE CLAIMS:** All orders are carefully packed, however, mishandling by the carrier can result in damage. The carrier has the responsibility for the shipment from the time it leaves our warehouse until it is delivered to you. All claims for lost or damaged goods should be reported to the carrier, not to **M.O.R.E.™** LLC.

**RETURNS:** No returns will be accepted without prior permission from **M.O.R.E.™** LLC. After you receive a Return Goods Authorization (RGA) number, merchandise must be returned prepaid and insured. A claim must be made within 30 days from receipt of merchandise. The original invoice or a copy with the RGA number written on must accompany all returns. A 20% restocking fee will be charged on all parts returned for credit or refund unless merchandise is proven to be defective or was shipped wrong by **M.O.R.E.™** LLC. No merchandise will be issued credit or refund if it has been installed, modified, used in any way or is in unsalable condition.

**WARRANTY:** All merchandise is warranted to be free from defects in materials and workmanship prior to installation. Any alteration or improper use will void this warranty. Because all parts we sell are intended for use in heavy-duty applications it is not possible to warrantee or guarantee the performance of any items. **M.O.R.E.™** LLC. products and the products manufactured by others, which we sell may be subject to an infinite variety of conditions due to the manner in which they are used, serviced and/or installed. Purchasers and users of such products rely upon their own judgment as to the suitable use selection, service and installation of such products.

**PRODUCT DISCLAIMER:** Modification of your vehicle to enhance performance with parts sold by **M.O.R.E.™** LLC. may create a dangerous condition which could cause serious bodily injury, and the buyer hereby expressly assumes all risks associated with any such modifications. All parts sold by **M.O.R.E.™** LLC. are for racing or off road use only. Mountain Off Road Enterprises LLC. will not accept responsibility for personal injury or property damage arising from the failure of any parts manufactured or sold by **M.O.R.E.™** LLC.

**Specifications are subject to change without notice.**

**Jeep®, AMC®, CJ®, YJ®, TJ®, LJ®, JK®, Wrangler®,** are registered trademarks of DaimlerChrysler. **M.O.R.E.™** is not affiliated with DaimlerChrysler.

**M.O.R.E.™, BombProof™, S.R.S.™, SlipLoc™, DoubleJointed™, RockProof™,** are trademarks used by **Mountain Off Road Enterprises, LLC.** These instructions and the M.O.R.E.™ logo are copyright©, 1999-2009.