



MOUNTAIN OFF ROAD ENTERPRISES, LLC

P O BOX 690, DELTA, CO 81416

Phone: 877-533-7229

Fax: 888-698-5337

E-mail: info@mountainoffroad.com

www.mountainoffroad.com

INSTALLATION INSTRUCTIONS FOR: JFB200, JFBHC200 & JFBS200

PLEASE READ AND UNDERSTAND TERMS / POLICIES BEFORE PROCEEDING



HARDWARE KIT:

- 4- Carriage bolts 1x13x1 1/4"
- 6- 1/2"-13 x1 1/4" Bolts
- 14-1/2" Flat Washers
- 6-1/2" Lock Washers
- 4-1/2"-13 Crimp Nuts
- 1- Bracket Right
- 1- Bracket Left



TERMS / POLICIES:

FIT and TOLERANCES: All parts in M.O.R.E.™ products are the results of countless hours of research, testing, fitting and refining. Jeeps have a large tolerances from vehicle to vehicle. In addition to the factory tolerances, most people install other then factory equipment (aftermarket add-ons). M.O.R.E.™ has done the best job we can to insure that our parts fit with some of the possibilities. However, you may find it necessary to grind, elongate, bend, or force the parts you buy to fit on your rig. Be sure that you want to install them before you modify them. Please use common sense when installing these parts and let us know how we can improve them.

DAMAGE CLAIMS: All orders are carefully packed, however, mishandling by the carrier can result in damage. The carrier has the responsibility for the shipment from the time it leaves our warehouse until it is delivered to you. All claims for lost or damaged goods should be reported to the carrier, not to M.O.R.E.™ LLC.

RETURNS: No returns will be accepted without prior permission from M.O.R.E.™ LLC. After you receive a Return Goods Authorization (RGA) number, merchandise must be returned prepaid and insured. A claim must be made with in 30 days from receipt of merchandise. The original invoice or a copy with the RGA number written on must accompany all returns. A 20% restocking fee will be charged on all parts returned for credit or refund unless merchandise is proven to be defective or was shipped wrong by M.O.R.E.™ LLC. No merchandise will be issued credit or refund if it has been installed, modified, used in any way or is in unsalable condition.

WARRANTY: All merchandise is warranted to be free from defects in materials and workmanship prior to installation. Any alteration or improper use will void this warranty. Because all parts we sell are intended for use in heavy-duty applications it is not possible to warrantee or guarantee the performance of any items. M.O.R.E.™ LLC. products and the products manufactured by others, which we sell may be subject to an infinite variety of conditions due to the manner in which they are used, serviced and/or installed. Purchasers and users of such products rely upon their own judgment as to the suitable use selection, service and installation of such products.

PRODUCT DISCLAIMER: Modification of your vehicle to enhance performance with parts sold by M.O.R.E.™ LLC. may create a dangerous condition which could cause serious bodily injury, and the buyer hereby expressly assumes all risks associated with any such modifications. All parts sold by M.O.R.E.™ LLC. are for racing or off road use only. Mountain Off Road Enterprises LLC. will not accept responsibility for personal injury or property damage arising from the failure of any parts manufactured or sold by M.O.R.E.™ LLC.

Specifications are subject to change without notice.

Jeep®, AMC®, CJ®, YJ®, TJ® Wrangler®, are registered trademarks of DaimlerChrysler. M.O.R.E.™ is not affiliated with DaimlerChrysler.

M.O.R.E.™, BombProof™, S.R.S.™, SlipLoc™, DoubleJointed™, RockProof™, are trademarks used by Mountain Off Road Enterprises, LLC. copyright©, 1999-2009.

M.O.R.E.™ recommends pre-fitting this *BUMPER* into your Jeep® BEFORE you paint it. Make sure that you Have no fit issues with any Aftermarket accessories. We know that some aftermarket swaybars may require a small amount of grinding or cutting to clear. Once you are happy with all aspects of it then paint it and re-install it. Once you modify it in any way, it is **NON-RETURNABLE !!!**

1– Remove Factory bumper , if equipped remove any lights. Remove plastic trim cover over sway bar.

2– Install winch into winch tray using supplied hardware with the winch. (Depending on winch it may be necessary to install the 2 -1/2” carriage bolts into the slotted holes in the winch tray on the passenger side).

3– Attach Left & Right brackets to the frame using the 1/2”-13x 1 1/4” bolts ,flat washers and lock washers. Install 1/2” flat washers between frame and bracket , Do not tighten at this time. (Brackets bolt to the forward 2 holes on the frame). See figure 1

4– Slide the bumper over the frame and align the slotted holes in the winch tray with the frame brackets and the bottom holes on the bumper with the factory holes . Install 1/2”-13x 1 1/4” bolts ,flat washers and lock washers into both lower holes and install the 1/2” Carriage bolts through the winch tray holes into the frame brackets. Install 1/2” flat washers and Crimp lock nuts to these bolts. Do Not tighten any bolts until all bolts have been installed. See figure 2

5– Level bumper and tighten all bolts.

Figure 1, (P.S. of Jeep)

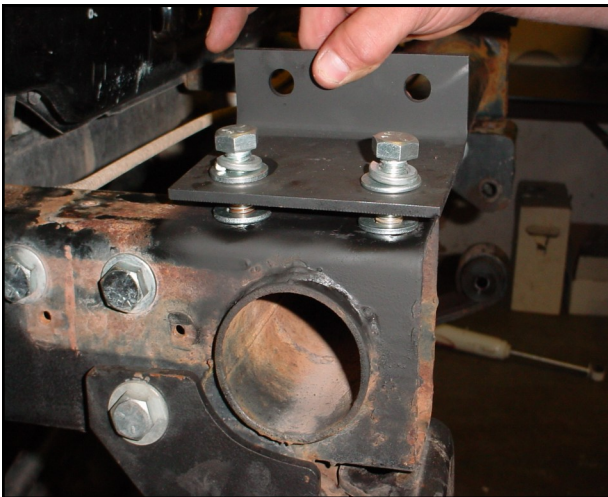


Figure 2

