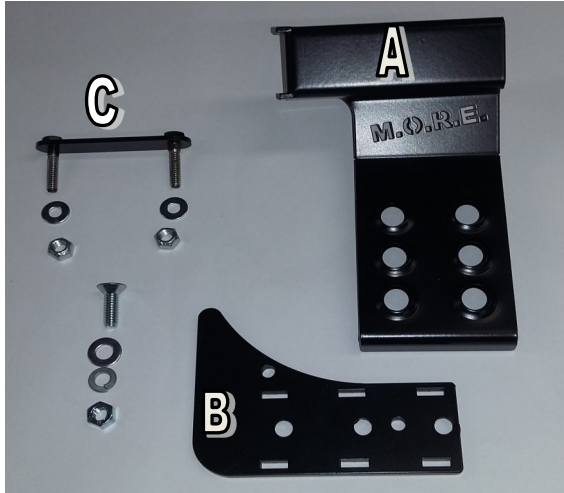




MOUNTAIN OFF ROAD ENTERPRISES, LLC.
P.O. BOX 690 DELTA COLORADO 81416
(877)JEEP-A2Z or (877)533-7229
FAX (888)698-5337
E-mail: info@mountainoffroad.com
www.mountainoffroad.com

INSTALLATION INSTRUCTIONS for DPJL18



HARDWARE KIT:

- 1 - Dead Pedal Bracket (A)
- 1 - Mounting Plate (B)
- 1 - Backing Plate with 1/4" bolts welded (C)
- 2 - 1/4" Flat Washers
- 2 - 1/4" Lock Nuts
- 1 - 5/16" x 1" Fat Top Bolt
- 1 - 5/16" Flat Washer
- 1 - 5/16" Lock Washer
- 1 - 5/16" Nut

Please read and understand all instructions before beginning the installation of the Dead Pedal. Please read the terms and policies on the back of these instructions.

The **DPJL18** Dead Pedal is designed to fit the following Jeep® vehicles: 2018 JL Wranglers equipped with an **Automatic Transmission Only**.

STEP 1: Pick one of the three locations on the mounting plate (**B**) (See Figure 1) and install the tabs of the dead pedal (**A**) into the mounting plate. With the tabs in the mounting plate, fasten the mounting plate to the dead pedal bracket by installing the 5/16" bolt into the countersunk hole in the backside of the mounting bracket, and fully tighten the bolt with flat washer, lock washer, and nut at this time. **Make sure there is no play between the mounting plate and Dead Pedal bracket before moving on to STEP 2.** (See Figure 2)

STEP 2: Open DS door and find the metal reinforcement plate above the plastic kick panel. (See Figure 3)

STEP 3: Install the backing plate with the welded 1/4" bolts (**C**) into the factory upper and lower holes in the metal plate utilizing the holes closest to the firewall. (See Figure 4)

STEP 4: Install the assembled Dead Pedal over the 1/4" bolts from the backing plate and loosely install 1/4" flat washers and nuts on the bolts. (See Figure 5)

STEP 5: Test fit the Dead Pedal to make sure it is located in the correct mounting spot for your foot. If you are **not** happy with the location of the Dead Pedal, go back to **STEP 1** to relocate the Dead Pedal. If you are happy with the location of the Dead Pedal, tighten the nuts.
GO JEEPIN!



FIGURE 1

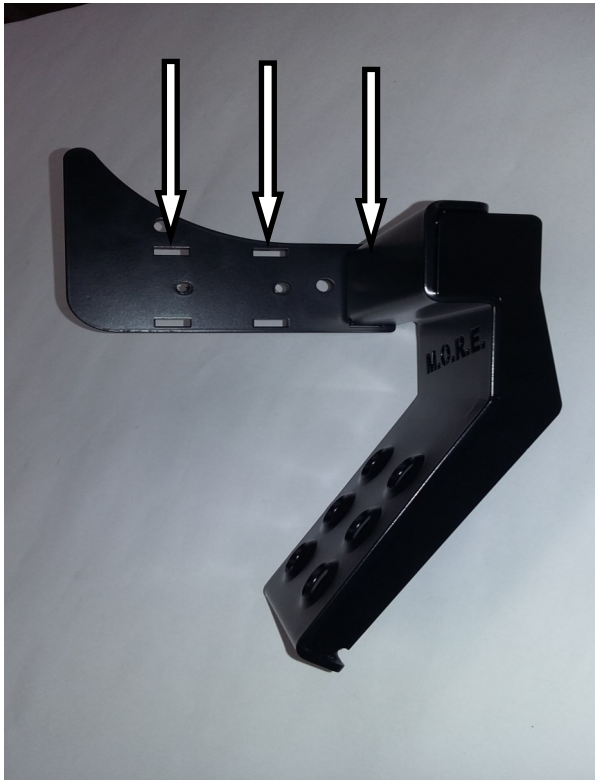


FIGURE 2

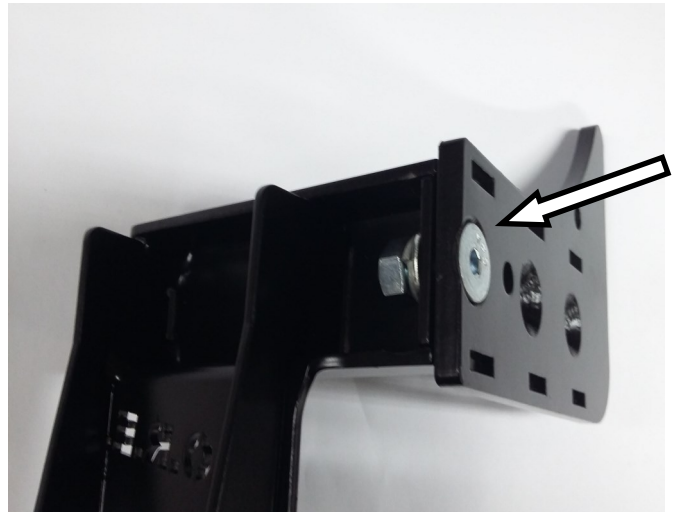


FIGURE 3



FIGURE 4

FIGURE 5



TERMS-POLICIES:

FIT and **TOLERANCES:** M.O.R.E.™ parts are the results of countless hours of research, testing, fitting and refining. Jeep® frames have a wide tolerance on bolt hole centers from frame to frame. This is why M.O.R.E.™ has installed “slots” in which to mount them. In addition to the factory tolerances, most people install other than factory equipment such as suspension lift kits, skid plates, different transfer cases etc. M.O.R.E.™ has done the best job we can to insure that our parts fit with all of the possibilities. However, you may find it necessary to grind, elongate, bend, or force these parts to fit on your rig. Please use common sense when installing these parts and let us know how we can improve them.

DAMAGE CLAIMS: All orders are carefully packed, however, mishandling by the carrier can result in damage. The carrier has the responsibility for the shipment from the time it leaves our warehouse until it is delivered to you. All claims for lost or damaged goods should be reported to the carrier, not to **M.O.R.E.™** LLC.

RETURNS: No returns will be accepted without prior permission from **M.O.R.E.™** LLC. After you receive a Return Goods Authorization (RGA) number, merchandise must be returned prepaid and insured. A claim must be made within 30 days from receipt of merchandise. The original invoice or a copy with the RGA number written on must accompany all returns. A 20% restocking fee will be charged on all parts returned for credit or refund unless merchandise is proven to be defective or was shipped wrong by **M.O.R.E.™** LLC. No merchandise will be issued credit or refund if it has been installed, modified, used in any way or is in unsalable condition.

WARRANTY: All merchandise is warranted to be free from defects in materials and workmanship prior to installation. Any alteration or improper use will void this warranty. Because all parts we sell are intended for use in heavy-duty applications it is not possible to warrantee or guarantee the performance of any items. **M.O.R.E.™** LLC. products and the products manufactured by others, which we sell may be subject to an infinite variety of conditions due to the manner in which they are used, serviced and/or installed. Purchasers and users of such products rely upon their own judgment as to the suitable use selection, service and installation of such products.

PRODUCT DISCLAIMER: Modification of your vehicle to enhance performance with parts sold by **M.O.R.E.™** LLC. may create a dangerous condition which could cause serious bodily injury, and the buyer hereby expressly assumes all risks associated with any such modifications. All parts sold by **M.O.R.E.™** LLC. are for racing or off road use only. Mountain Off Road Enterprises LLC. will not accept responsibility for personal injury or property damage arising from the failure of any parts manufactured or sold by **M.O.R.E.™** LLC.

Specifications are subject to change without notice.

Jeep®, AMC®, CJ®, YJ®, TJ®, LJ®, JK®, Wrangler®, are registered trademarks of DaimlerChrysler. **M.O.R.E.™** is not affiliated with DaimlerChrysler.

M.O.R.E.™, BombProof™, S.R.S.™, SlipLoc™, DoubleJointed™, RockProof™, are trademarks used by **Mountain Off Road Enterprises, LLC.** These instructions and the M.O.R.E.™ logo are copyright©, 1999-2009.