



MOUNTAIN OFF ROAD ENTERPRISES, LLC.
P.O. BOX 690 DELTA COLORADO 81416
Phone: 877-533-7229
888-698-5337
E-mail: info@mountainoffroad.com
www.mountainoffroad.com

INSTALLATION INSTRUCTIONS for DP0709



HARDWARE KIT:

- 1- Dead Pedal Bracket
- 2- 6-1.0x30mm bolt
- 2- 6-1.0 Flat Washer
- 2- 6mm Lock Washer

Please read and understand all instructions before beginning the installation of the Dead Pedal. Please read the terms and policies on the back of these instructions.

The **DP0709** Dead Pedal is designed to fit the following Jeep® vehicles: 2007-2017 JK Wranglers equipped with an **Automatic Transmission Only**.

STEP 1: Open DS door and remove Electrical harness (If Equipped) and remove door limit strap. **Be careful not to allow the door to swing all the way or you may end up with a dent from the mirror contacting the body.** (See Figure 1)

STEP 2: Remove both bolts that retain the limit strap bracket, this will require a T30 torx socket. (See Figure 2)

STEP 3: Remove both nuts that retain the 2 ground wires, **Do not Remove the ground wires from the studs.** (See Figure 3)

STEP 4: Install the Dead Pedal Bracket over the 2 ground wire studs and reinstall the nuts, (**Do Not Tighten nuts**). **Make sure that the ground wires are angled straight up so they lie in the cut out.** (See Figure 4)

STEP 5: Reinstall the door limit strap bracket between the Dead Pedal bracket and the body and install the supplied 6mm bolts, with lock and flat washers. (See Figure 5). Tighten all hardware , reinstall the limit strap and the electrical harness. **GO JEEPIN!**

FIGURE 1

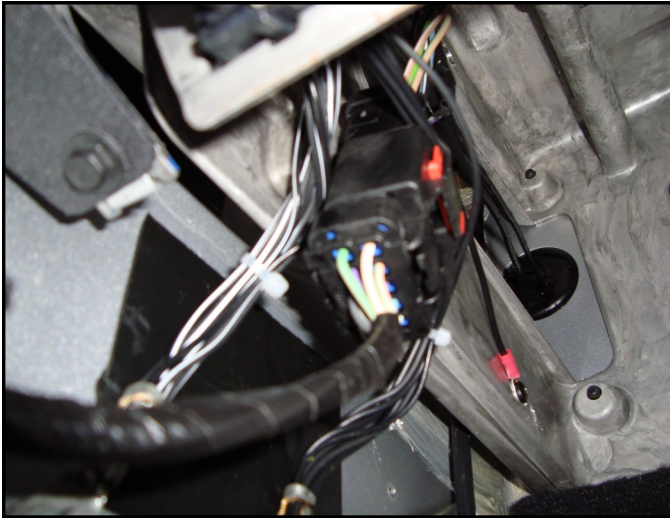


FIGURE 2

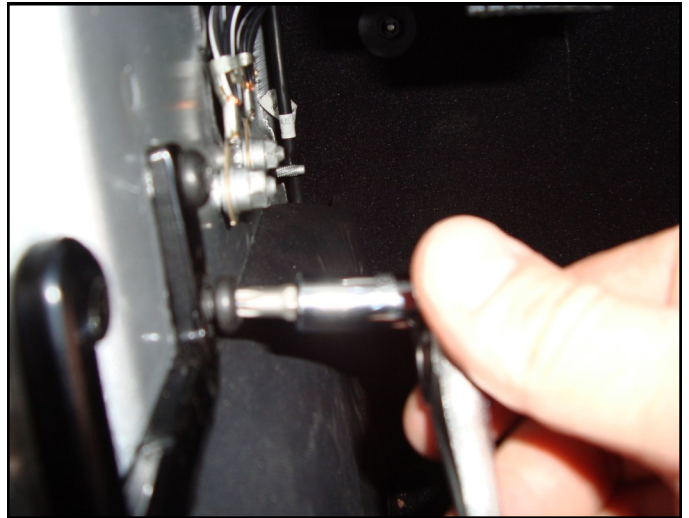


FIGURE 3



FIGURE 4

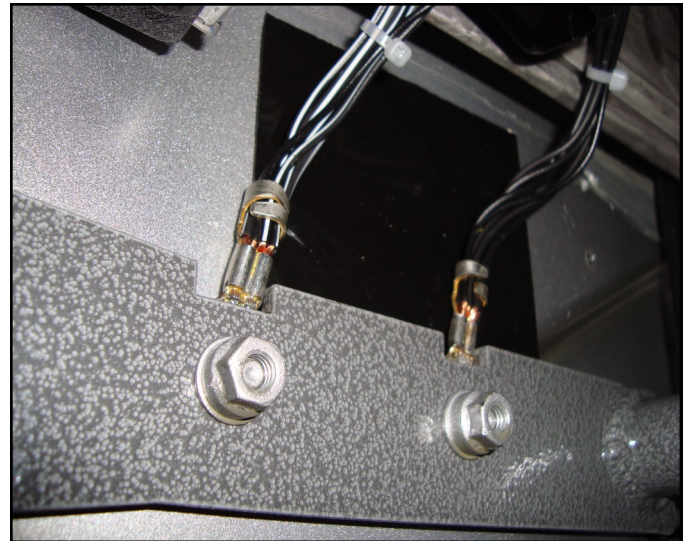
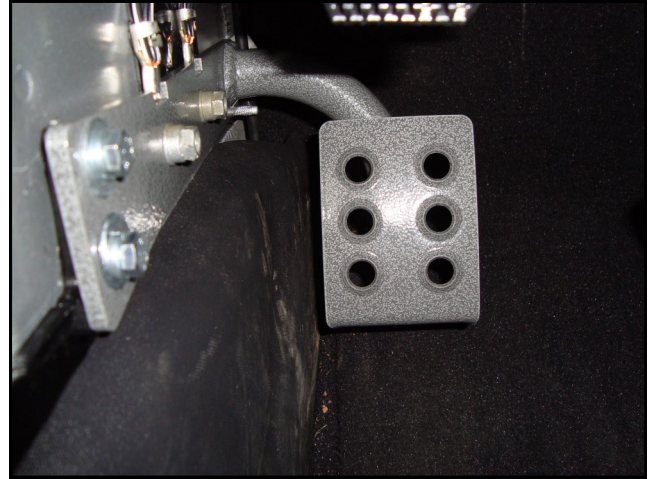
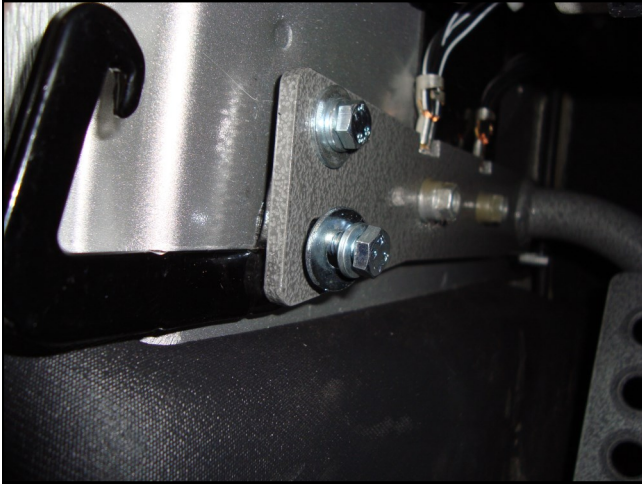


FIGURE 5



TERMS-POLICIES:

FIT and **TOLERANCES:** M.O.R.E.™ parts are the results of countless hours of research, testing, fitting and refining. Jeep® frames have a wide tolerance on bolt hole centers from frame to frame. This is why M.O.R.E.™ has installed “slots” in which to mount them. In addition to the factory tolerances, most people install other than factory equipment such as suspension lift kits, skid plates, different transfer cases etc. M.O.R.E.™ has done the best job we can to insure that our parts fit with all of the possibilities. However, you may find it necessary to grind, elongate, bend, or force these parts to fit on your rig. Please use common sense when installing these parts and let us know how we can improve them.

DAMAGE CLAIMS: All orders are carefully packed, however, mishandling by the carrier can result in damage. The carrier has the responsibility for the shipment from the time it leaves our warehouse until it is delivered to you. All claims for lost or damaged goods should be reported to the carrier, not to **M.O.R.E.™** LLC.

RETURNS: No returns will be accepted without prior permission from **M.O.R.E.™** LLC. After you receive a Return Goods Authorization (RGA) number, merchandise must be returned prepaid and insured. A claim must be made within 30 days from receipt of merchandise. The original invoice or a copy with the RGA number written on must accompany all returns. A 20% restocking fee will be charged on all parts returned for credit or refund unless merchandise is proven to be defective or was shipped wrong by **M.O.R.E.™** LLC. No merchandise will be issued credit or refund if it has been installed, modified, used in any way or is in unsalable condition.

WARRANTY: All merchandise is warranted to be free from defects in materials and workmanship prior to installation. Any alteration or improper use will void this warranty. Because all parts we sell are intended for use in heavy-duty applications it is not possible to warrantee or guarantee the performance of any items. **M.O.R.E.™** LLC. products and the products manufactured by others, which we sell may be subject to an infinite variety of conditions due to the manner in which they are used, serviced and/or installed. Purchasers and users of such products rely upon their own judgment as to the suitable use selection, service and installation of such products.

PRODUCT DISCLAIMER: Modification of your vehicle to enhance performance with parts sold by **M.O.R.E.™** LLC. may create a dangerous condition which could cause serious bodily injury, and the buyer hereby expressly assumes all risks associated with any such modifications. All parts sold by **M.O.R.E.™** LLC. are for racing or off road use only. Mountain Off Road Enterprises LLC. will not accept responsibility for personal injury or property damage arising from the failure of any parts manufactured or sold by **M.O.R.E.™** LLC.

Specifications are subject to change without notice.

Jeep®, AMC®, CJ®, YJ®, TJ®, LJ®, JK®, Wrangler®, are registered trademarks of DaimlerChrysler. **M.O.R.E.™** is not affiliated with DaimlerChrysler.

M.O.R.E.™, BombProof™, S.R.S.™, SlipLoc™, DoubleJointed™, RockProof™, are trademarks used by **Mountain Off Road Enterprises, LLC.** These instructions and the M.O.R.E.™ logo are copyright©, 1999-2009.