



**MOUNTAIN OFF ROAD ENTERPRISES, LLC.**  
 P O BOX 690, DELTA, CO 81416  
 877-533-7229 888-698-5337 Fax  
 E-mail: info@mountainoffroad.com  
 www.mountainoffroad.com

**INSTALLATION INSTRUCTIONS FOR: 9950**

PLEASE READ AND UNDERSTAND TERMS / POLICIES BEFORE PROCEEDING

These mounts fit 1987-1995 Jeep® YJ Wrangler rear upper shock mounts. They will work with or without a body lift. They will allow the use of shocks that are 2" longer than the stock mounts. You must purchase new shocks.

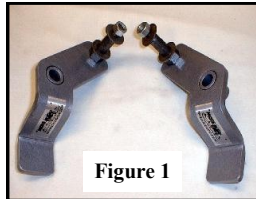


Figure 1

**CONTENTS OF KIT:**

- 1- Left Bracket, with shock pin (Drivers side)
  - 1- Right Bracket, with shock pin (Passengers side)
- See figure 1**

**STEP 1:** Jack up the rear of your YJ and support the axle with jack stands. Remove the rear shocks. Save the mounting nuts and washers, they will be re-installed. If your YJ has the fuel filter located on the drivers side frame rail, the small skid plate for it will need to be modified so the shock clears it. Remove it for now.

**STEP 2:** Place the 9950 shock mounts on the factory studs. The passenger side may contact the heat shield on the floorboard. Modify as necessary. The 9950 shock mounts need to have a locating hole drilled in the frame. Carefully mark the frame where the locating pin contacts the frame and remove the 9950 mounts. Drill a 1/2" hole in the frame for this locating pin.

**See Figure 2** (arrow).

**STEP 3:** Re-install the 9950 shock mounts. Make sure the locating pin seats into the hole that you just drilled. It maybe necessary to file the hole slightly to allow the 9950 to slide all the way onto the factory shock stud. Install the factory shock nut and washer. Tighten to 25 Lb. Ft. torque.

**See Figure 3.**

**STEP 4:** You now need to fit your Jeep® for new shocks. Typically, 2" longer shocks can be installed, however, we recommend measuring your Jeep® for proper length. **See Figure 4.** After new shocks are installed, modify the fuel filter skid plate to clear the shock, and reinstall it.

Figure 2

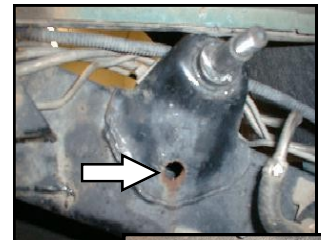


Figure 3

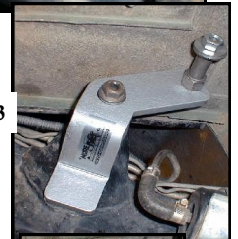


Figure 4



**TERMS / POLICIES:**

**FIT and TOLERANCES:** All parts in M.O.R.E.™ products are the results of countless hours of research, testing, fitting and refining. Jeeps have a large tolerances from vehicle to vehicle. In addition to the factory tolerances, most people install other than factory equipment (aftermarket add-ons). M.O.R.E.™ has done the best job we can to insure that our parts fit with some of the possibilities. However, you may find it necessary to grind, elongate, bend, or force the parts you buy to fit on your rig. Be sure that you want to install them before you modify them. Please use common sense when installing these parts and let us know how we can improve them.

**DAMAGE CLAIMS:** All orders are carefully packed, however, mishandling by the carrier can result in damage. The carrier has the responsibility for the shipment from the time it leaves our warehouse until it is delivered to you. All claims for lost or damaged goods should be reported to the carrier, not to M.O.R.E.™ LLC.

**RETURNS:** No returns will be accepted without prior permission from M.O.R.E.™ LLC. After you receive a Return Goods Authorization (RGA) number, merchandise must be returned prepaid and insured. A claim must be made within 30 days from receipt of merchandise. The original invoice or a copy with the RGA number written on must accompany all returns. A 20% restocking fee will be charged on all parts returned for credit or refund unless merchandise is proven to be defective or was shipped wrong by M.O.R.E.™ LLC. No merchandise will be issued credit or refund if it has been installed, modified, used in any way or is in unsalable condition.

**WARRANTY:** All merchandise is warranted to be free from defects in materials and workmanship prior to installation. Any alteration or improper use will void this warranty. Because all parts we sell are intended for use in heavy-duty applications it is not possible to warrantee or guarantee the performance of any items. M.O.R.E.™ LLC. products and the products manufactured by others, which we sell may be subject to an infinite variety of conditions due to the manner in which they are used, serviced and/or installed. Purchasers and users of such products rely upon their own judgment as to the suitable use selection, service and installation of such products.

**PRODUCT DISCLAIMER:** Modification of your vehicle to enhance performance with parts sold by M.O.R.E.™ LLC. may create a dangerous condition which could cause serious bodily injury, and the buyer hereby expressly assumes all risks associated with any such modifications. All parts sold by M.O.R.E.™ LLC. are for racing or off road use only. Mountain Off Road Enterprises LLC. will not accept responsibility for personal injury or property damage arising from the failure of any parts manufactured or sold by M.O.R.E.™ LLC.

Specifications are subject to change without notice.

Jeep®, AMC®, CJ®, YJ®, TJ® Wrangler®, are registered trademarks of DaimlerChrysler. M.O.R.E.™ is not affiliated with DaimlerChrysler.

M.O.R.E.™, BombProof™, S.R.S.™, SlipLoc™, DoubleJointed™, RockProof™, are trademarks used by Mountain Off Road Enterprises, LLC. copyright©, 1999-2008.