



MOUNTAIN OFF ROAD ENTERPRISES LLC
P.O. BOX 690, DELTA, COLORADO 81416
877-533-7229 888-698-5337 fax
E-mail: info@mountainoffroad.com
www.mountainoffroad.com

INSTALLATION INSTRUCTIONS FOR S.R.S.™ 8795-5.

Please read Terms and Policies on page 2

This system fits 1987-1995 Jeep® YJ Wrangler vehicles. It consists of the front brackets and hardware to install them *only*. No shackle attachment is provided with this part number. Before starting installation, check the frame to make sure it is in good condition, is straight and has no heavy rust. Only install it on vehicles in good sound condition. This system will work with stock or most aftermarket front bumpers, with or without a winch. No welding is required for installation.

LEAF SPRINGS: This system has been designed to work with stock and aftermarket leaf springs. It has been tested with springs up to 3.5" of lift over stock and works fine. It will work with spring under (stock) or over the axle (custom).

PITMAN ARM: You must use a stock pitman arm. If a aftermarket pitman arm is used that has more drop than the stock arm it may contact the tie rod upon suspension compression.

DRIVE SHAFT: The front drive shaft will need to have a longer slip-yoke installed. Due to the action of the suspension movement the stock slip-yoke will not have enough length or movement. We recommend calling the following drive line shop: Tom Wood's Custom Drive Shafts, 1-877-497-4238 (toll free).

TIRE SIZE: Stock leaf spring equipped Jeeps can run up to a 30" tall tire without tire to fender contact. 2.5" lift spring equipped Jeeps can use up to a 31" tall tire, or up to a 32" tall tire if the bump stop is lowered one inch, and a one inch body lift is installed. 3.5" to 4" lift spring equipped Jeeps can use up to a 33" tall tire (mounted on a 8" wide wheel) if the bump stop is lowered two inches and a 1" body lift is installed. Tires taller than 33" plan on several modifications (Bump stop, body lift, fender trimming etc.).

BRAKE HOSES: The stock brake hoses will work if you are using stock leaf springs under the axle. If you have any lift in your springs, or a spring over axle conversion, the stock brake hoses will have to be replaced with longer units. Please call for these hoses if you need them, we stock extended stainless steel braided hoses for Jeep® vehicles.

TRAC BAR and ANTI SWAY BAR: It is mandatory that you keep the trac bar and anti-sway bar in place when using this shackle reversal system. If you desire full suspension articulation M.O.R.E.™ suggests that you install a pair of Quick Disconnects on the anti-sway bar and use our SlipLoc™ Trac Bar. These items are in our catalog.

FIT and TOLERANCES: All parts in this system are the results of countless hours of research, testing, fitting and refining. Jeep® frames have a wide tolerance on bolt hole centers from frame to frame. This is why M.O.R.E.™ has installed several "slots" in which to mount our bracketry. In addition to the factory tolerances, most people install other than factory equipment such as bumpers, springs etc. M.O.R.E.™ has done the best job we can to insure that our parts fit with all of the possibilities. However, you may find it necessary to grind, elongate, bend, or force the parts in this system to fit on your rig. Please use common sense when installing these parts and let us know how we can improve them. Thank you.

M.O.R.E.™ Shackle Reversal System # 8795-5 contains the following items:

<u>ITEM</u>	<u>DESCRIPTION</u>	<u>QTY.</u>	<u>PART NUMBER</u>
A	Bracket-Drivers side	1	8795-DS
B	Bracket-Passenger side	1	8795-PS
C	Bushing-Aluminum	4	8795-125
F	Tube Spacer 3/4 OD X 2-3/4 long	1	S101299
H	Bolt-Spring Pivot ft. 9/16"x4-1/2"	2	13271
I	Bolt-Bracket to Frame 1/2"x4-1/2"	3	13221
K	Bolt-Pivot Bracket to Frame 1/2"x1-1/4"	2	13207
L	Nut-Crimplock 9/16"	2	37270
M	Nut-Crimplock 1/2"	5	37268
N	Washer-Flat 9/16"	4	33088
O	Washer-Flat 1/2"	12	33086
-	Instruction Sheet	1	8795-5IS

Photo of contents on page 4

Please familiarize yourself with all components in the system. The instructions will refer to the item by letter not description. Read all instructions carefully before work is started on your vehicle. In addition to basic hand tools, the following specialty tools are needed to perform this installation: Drill (1/2" chuck), 3/4" diameter drill bit with 1/2" shank, 1/2" diameter drill bit, floor jack, jack stands (4), torque wrench

TERMS-POLICIES:

DAMAGE CLAIMS: All orders are carefully packed, however, mishandling by the carrier can result in damage. The carrier has the responsibility for the shipment from the time it leaves our warehouse until it is delivered to you. All claims for lost or damaged goods should be reported to the carrier, not to **M.O.R.E.™ LLC**.

RETURNS: No returns will be accepted without prior permission from **M.O.R.E.™ LLC**. After you receive a Return Goods Authorization (RGA) number, merchandise must be returned prepaid and insured. A claim must be made within 30 days from receipt of merchandise. The original invoice or a copy with the RGA number written on must accompany all returns. A 20% restocking fee will be charged on all parts returned for credit or refund unless merchandise is proven to be defective or was shipped wrong by **M.O.R.E.™ LLC**. No merchandise will be issued credit or refund if it has been installed, modified, used in any way or is in unsalable condition.

WARRANTY: All merchandise is warranted to be free from defects in materials and workmanship prior to installation. Any alteration or improper use will void this warranty. Because all parts we sell are intended for use in heavy-duty applications it is not possible to warrantee or guarantee the performance of any items. **M.O.R.E.™ LLC** products and the products manufactured by others, which we sell may be subject to an infinite variety of conditions due to the manner in which they are used, serviced and/or installed. Purchasers and users of such products rely upon their own judgment as to the suitable use selection, service and installation of such products.

PRODUCT DISCLAIMER: Modification of your vehicle to enhance performance with parts sold by **M.O.R.E.™ LLC** may create a dangerous condition which could cause serious bodily injury, and the buyer hereby expressly assumes all risks associated with any such modifications. All parts sold by **M.O.R.E.™ LLC** are for racing or off road use only. Mountain Off Road Enterprises LLC. will not accept responsibility for personal injury or property damage arising from the failure of any parts manufactured or sold by **M.O.R.E.™ LLC**.

Specifications are subject to change without notice.

Jeep®, AMC®, CJ®, YJ®, Wrangler®, are registered trademarks of the DaimlerChrysler. **M.O.R.E.™** is not associated with DaimlerChrysler.

M.O.R.E.™, BombProof™, S.R.S.™, SlipLoc™, DoubleJointed™, RockProof™, are trademarks used by **Mountain Off Road Enterprises, LLC**. The **M.O.R.E.™** logo is and this instruction sheet is copyright©, 1999-2008.

STEP 1: On a flat, level, hard surface (concrete) floor, jack up the Jeep® and support the frame with jack stands six inches behind the stock front spring hanger (pivot end of spring). Remove the front wheels. Remove front bumper. Remove the plastic frame cover. See figure 1.

STEP 2: Using a second set of jack stands, support the front axle under the rotor/hub area. There should be a slight bit of weight on the stands. See figure 2.

STEP 3: Remove the front drive shaft. Remove shackles and bushings from frame. Set them aside, they will be re-used. Remove pivot bolt from back of leaf springs. Remove springs.

STEP 4: On the drivers side remove the front lower bolt that extends through the frame retaining the steering box. See figure 3. Install items "C" (bushings) into the stock shackle bracket. See figure 4. Install item "A" (bracket) over item "C" and into place. Install one flat washer item "O" on bolt item "I" and install bolt through item "A". See figure 5. Install a flat washer and Crimplock nut on the bolt. Do not tighten at this time. Install the stock bolt removed from the steering box location. See figure 6. Do not tighten at this time. Install a flat washer on item "K" (bolt) and install item "K" through the back side of item "A". See figure 7. Install a flat washer and Crimplock nut on item "K". Tighten items "I" and "K" to 75 lbs. ft. torque. Tighten the stock steering box bolt to 50 lbs. ft. torque.

STEP 5: On the passengers side install items "C" into the stock shackle bracket. Install item 'B' over items "C" and into place. Install a flat washer over item "I" and install it through item "B". See figure 8. Install a flat washer on item "K" and install item "K" through back side of item "B". Install flat washer and Crimplock nut on item "K". Tighten items "K" and "I" **SLIGHTLY!** This is to hold it in place only for the next step.

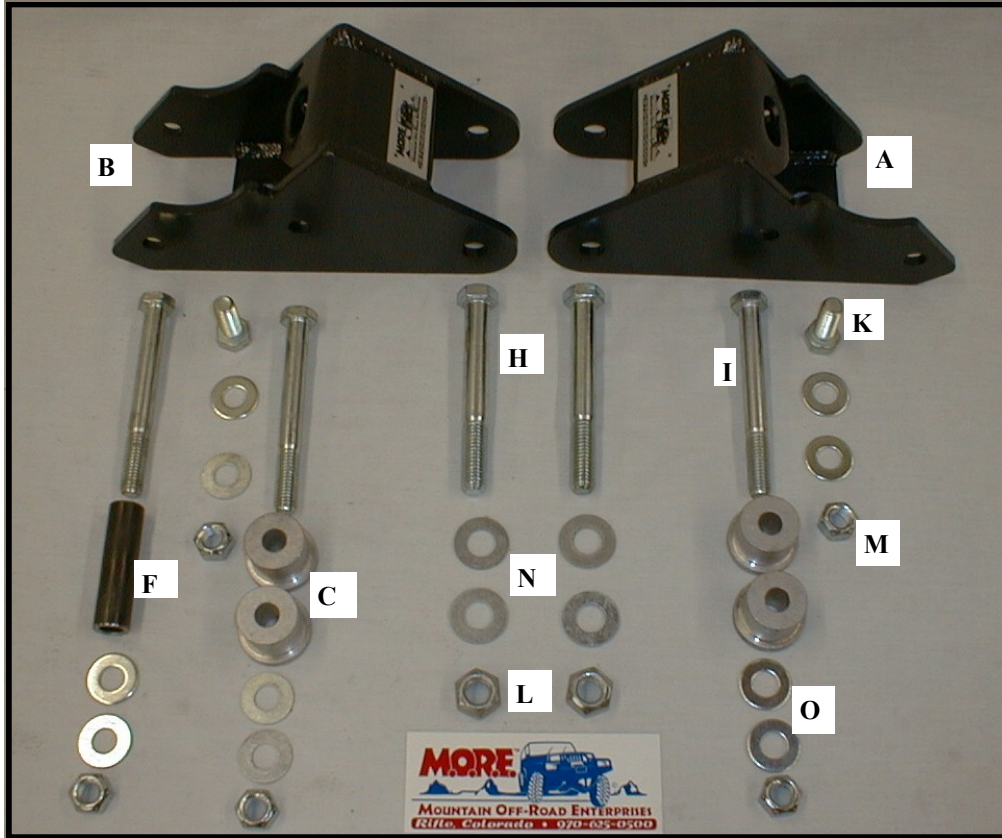
STEP 6: With a ½" diameter bit in a drill, use the bracket item "B" as a guide to drill the frame. Drill just enough to 'dimple' the frame on the inside frame rail, and the outside frame rail. See figures 9a and 9b.

STEP 7: Remove item "B" from the frame. With a 1/8" bit in a drill, drill a pilot hole through the dimpled marks in the frame, inside and out. Re-install a ½" bit and drill the pilot holes from the outside all the way through both holes. See figure 10. Install a ¾" bit in the drill and drill the **OUTSIDE FRAME RAIL ONLY** to ¾". See figure 11. Install item "F" (tube spacer) into ¾" hole. See figure 12. Re-install item "B" as performed in step 5. Install a washer over item "I" and "start" it through the hole you just drilled. Install two flat washers between the inside frame rail and the bracket as you insert item "I" all the way through the hole and bracket. See figure 13. Install a flat washer and Crimplock nut and tighten items "K" and "I" to 75 lbs. ft. torque.

STEP 8: Install the front bumper and start the upper bolts. Install the stock (Torx Head) lower bolts through items "A" and "B" up through the bumper and into the frame. See figure 14. After all four bolts are started, tighten them to 65 lbs. ft. torque.

This S.R.S™ # 8795-5 contains only the front brackets/hardware to install them. You must mount the shackles to the frame behind the front axle your own way. M.O.R.E.™ offers several universal bushing assemblies, shackle hangers and shackles for different methods. Please contact us for any of the above items. Thank you for purchasing this M.O.R.E.™ product.

PHOTO of CONTENTS: 8795-5



NOTES:



Figure 1



Figure 2



Figure 3



Figure 4

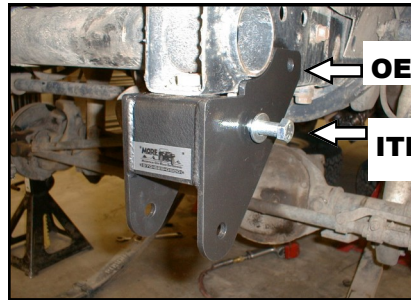


Figure 5 & 6



Figure 7

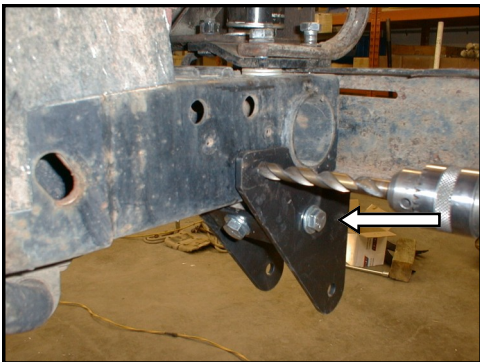


Figure 8

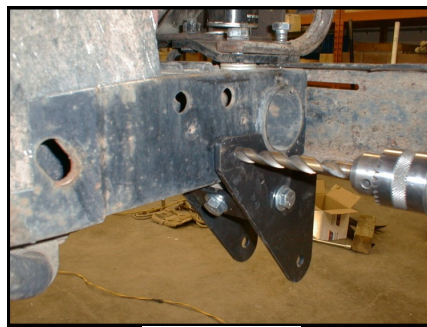


Figure 9a

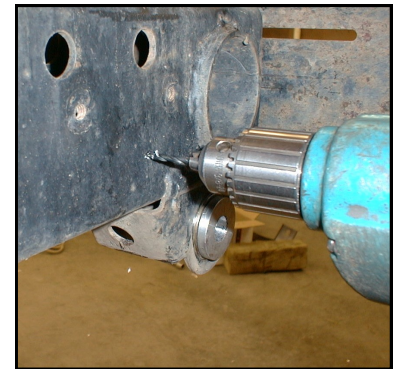


Figure 9b





FIGURE 10

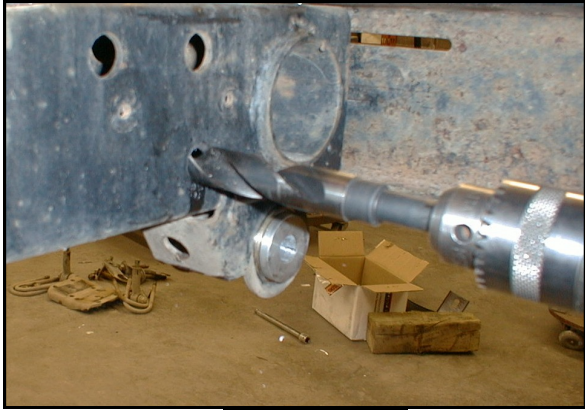


FIGURE 11



FIGURE 12



FIGURE 13

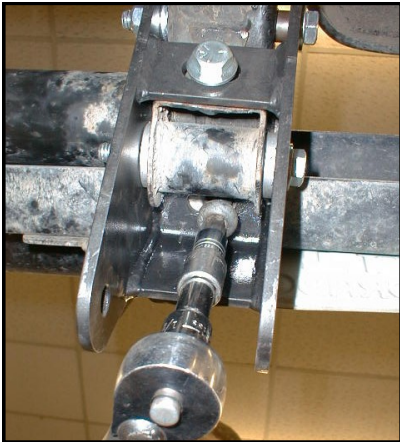


FIGURE 14

