

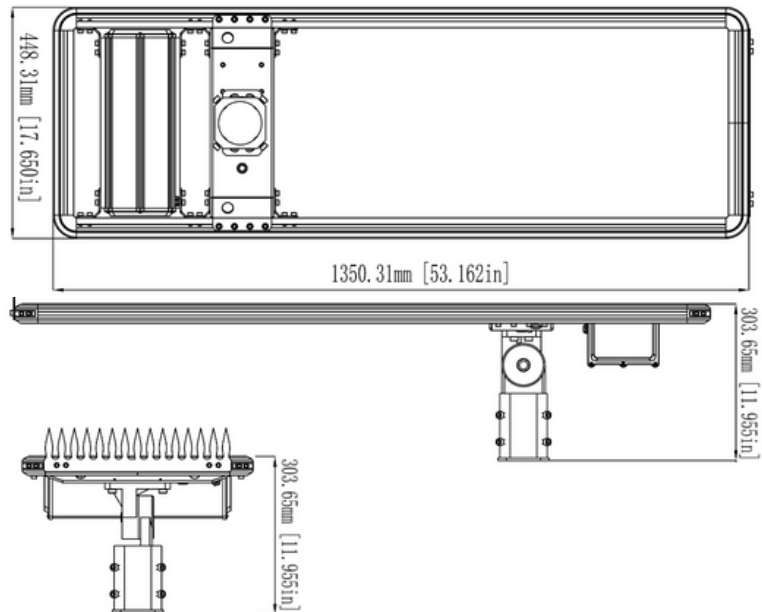
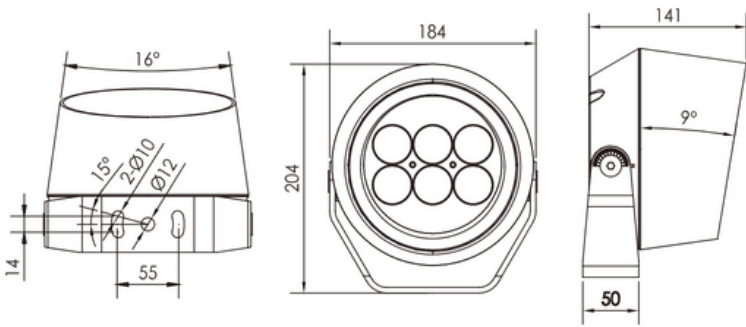


SOLARFLAIR

**POLE MOUNTED CASAMBI
RGBW LED FLOODLIGHT - 2 x 25W**



The SolarFlair LED system by Integrated Power introduces users into the world of sustainable RGB lighting solutions. The SolarFlair is an all-in-one system, integrating RGBW LED floodlights, a solar engine and Bluetooth mesh wireless technology. The addition of Casambi smart controls, allows for seamless wireless synchronization of multiple towers, and creating stunning, harmonised displays.



Features

- Heavy duty floodlight construction
- High lumen efficiency
- Wide range of optics
- Bifacial solar panel
- Inbuilt MPPT charge controller
- CREE COB LED chips
- Casambi enabled with wireless control
- Supplied with/ without pole

Applications

- Tree Uplighting
- Wall Washing
- Flagpole & Post Lighting
- Public Monuments
- Walkways
- Estates



Standard Specifications

- Rated Input Power: 2 x 25W Floodlight / 100W Bifacial Solar Panel
- Input Voltage: 24Vdc
- Battery Capacity: 748Wh Li-ion battery
- Single colour run time up to 40hrs per charge
- Colour Temperature: RGBW (3000K - White)
- Beam Angle: 15°, 24°, 36°, 60°
- Operating Temperature: -25°C ∞ 50°C
- EPA Rating (Sail Area): 0.7m² (Solar Engine)
- EPA Rating (Sail Area): 0.04m² (1x Floodlight)
- IP Rating: IP66
- Floodlight Dimensions: Ø180 x 204 x 141mm
- Panel Dimensions: 448.31 x 1350.31 x 303.65mm
- Floodlight Fitting Weight: 4kg (each)
- Panel Fitting Weight: 18.7kg
- Control: Casambi

Option List

Models List

Silver/ RGBW / 15 Degree Optic	SFPC50BKRGBWD01
Silver/ RGBW / 24 Degree Optic	SFPC50BKRGBWD02
Silver/ RGBW / 36 Degree Optic	SFPC50BKRGBWD03
Silver/ RGBW / 60 Degree Optic	SFPC50BKRGBWD04

Accessories

IES Files

IES files available on request

