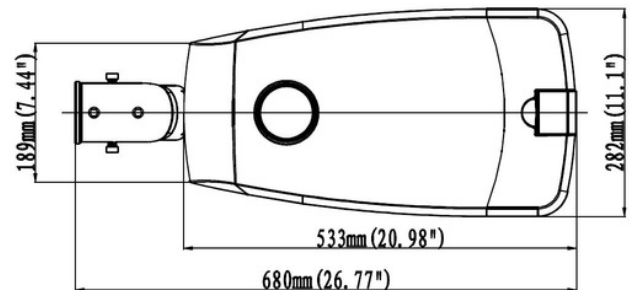
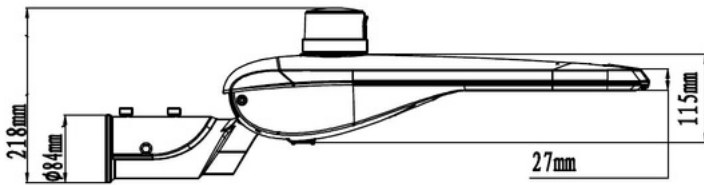


SL2 Series

LED STREETLIGHT WITH PE CELL

SILVER - 90W



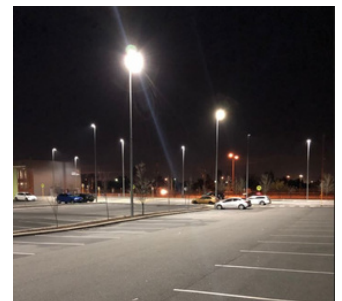
The SL2 Series LED streetlight range offers a reliable and modern LED solution for new installations and retrofits. The high output Nichia LED chips can utilise a 'Batwing' distribution lens system to ensure a wide and even spread of light, which is perfect for carparks and roadways. The smooth top surface limits the build up for dirt and debris. With the addition of Casambi wireless control, users are easily able to interact and customise their lighting environment.

Features

- All aluminium and stainless steel fitting construction
- Tool free, easy fitting access
- Reversible arm for horizontal and vertical spigots
- Different spigot size accessories available
- Auto isolation system
- Multiple optics available
- 7 Pin NEMA socket
- 0-10V dimmable driver
- Casambi ready (Casambi driver needed)
- [IPX output control](#) compatible

Applications

- Roadways
- Carparks
- Walkways
- Caryards
- Parks



Standard Specifications

- Rated Input Power: 90W
- Lumen Output: 11,700lm
- Colour Temperature: 4000K (3000K / 5000K optional)
- CRI Rating: CRI>80
- SDCM Rating: < 3
- Operating Temperature: -30/+50°C
- EPA (Sail Area): 0.195m²
- Service Life: L90B10 />50,000hrs@63°Tj
- IP Rating: IP66
- IK Rating: IK08
- Fitting weight: 6.8kg
- Suits 60mm OD spigot

Option List

- DALI Dimming /DALI
- 0-10V Dimming/ 0-10V
- Casambi/ CAS
- IPX Output Control
(additional hardware required)

Models List

Silver / 3000K / 75x150 Degree	SL2P90SI3KD01
Silver / 3000K / 45x155 Degree	SL2P90SI3KD02
Silver / 3000K / 45x145 Degree	SL2P90SI3KD03
Silver / 4000K / 75x150 Degree	SL2P90SI4KD01
Silver / 4000K / 45x155 Degree	SL2P90SI4KD02
Silver / 4000K / 45x145 Degree	SL2P90SI4KD03
Silver / 5000K / 75x150 Degree	SL2P90SI5KD01
Silver / 5000K / 45x155 Degree	SL2P90SI5KD02
Silver / 5000K / 45x145 Degree	SL2P90SI5KD03

Accessories

Spigot Arm Adaptor - 34mm	SL2ADP34
Spigot Arm Adaptor - 42mm	SL2ADP42
Spigot Arm Adaptor - 76mm	SL2ADP76
Wall Mount Bracket	SL2WADP01
Right Angle Pole Adaptor - 90mm	SL2RADP90
Dual Spigot Adaptor - 60mm	SL2ADP60D
Dual Spigot Adaptor - 76mm	SL2ADP76D
100mm Square Pole ADP - Single	SL2ADP100SQS
100mm Square Pole ADP - Double	SL2ADP100SQD

IES Files

- IES SL290SI5KN01 75x150deg 90W
- IES SL290SI5KN02 45x155deg 90W
- IES SL290SI5KN03 45x145deg 90W

