

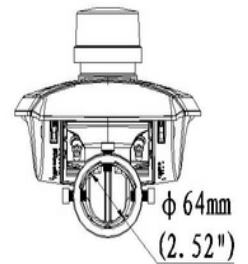
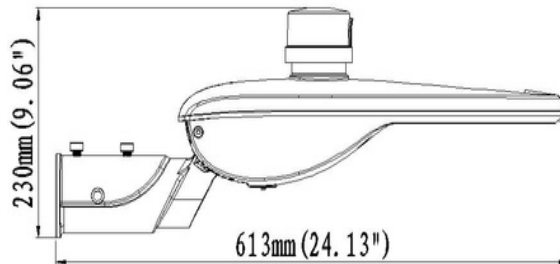
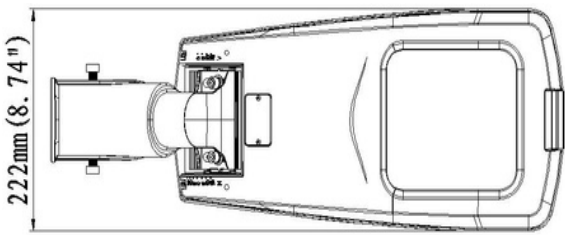
# SL2 Series

## CASAMBI LED STREETLIGHT

### 30W - SILVER



The SL2 Series LED streetlight range offers a reliable and modern LED solution for new installations and retrofits. With Casambi wireless controls, users are easily able to interact and customize their settings with programs of smart dimming, time scheduling, and grouping. The high output Nichia LED chips can utilise a 'Batwing' distribution lens system to ensure a wide and even spread of light, which is perfect for carparks and roadways. The smooth top surface limits the build up for dirt and debris.

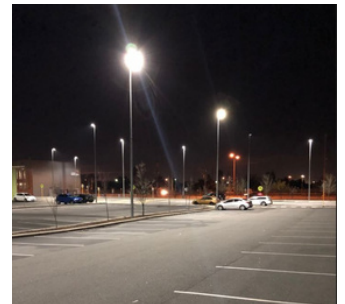


### Features

- All aluminium and stainless steel fitting construction
- Tool free, easy fitting access
- Reversible arm for horizontal and vertical spigots
- Different spigot size accessories available
- Multiple optics available
- Auto isolation system
- NEMA socket
- Casambi enabled

### Applications

- Roadways
- Carparks
- Walkways
- Caryards
- Parks



## Standard Specifications

- Rated Input Power: 30W
- Lumen Output: 3,750lm
- Colour Temp: 4000K (3000K / 5000K optional)
- CRI Rating: CRI>80
- SDCM Rating: < 3
- Operating Temperature: -30/+50°C
- EPA (Sail Area): 0.136m<sup>2</sup>
- Service Life: L90B10 / >50,000hrs@63°Tj
- Ingress Protection: IP66
- IK Rating: IK08
- Fitting weight: 4.1kg
- Suits 60mm OD spigot
- Casambi Wireless Range: Up to 200m in long range mode

## Option List

## Models List

Silver / 75x150 Degree	SL2C30SI3KD01
Silver / 45x155 Degree	SL2C30SI3KD02
Silver / 45x145 Degree	SL2C30SI3KD03
Silver / 75x150 Degree	SL2C30SI4KD01
Silver / 45x155 Degree	SL2C30SI4KD02
Silver / 45x155 Degree	SL2C30SI4KD03
Silver / 75x150 Degree	SL2C30SI5KD01
Silver / 45x155 Degree	SL2C30SI5KD02
Silver / 45x145 Degree	SL2C30SI5KD03

## Accessories

Spigot Arm Adaptor - 34mm	SL2ADP34
Spigot Arm Adaptor - 42mm	SL2ADP42
Spigot Arm Adaptor - 76mm	SL2ADP76
Wall Mount Bracket	SL2WADP01
Right Angle Pole Adaptor - 90mm	SL2RADP90
Dual Spigot Adaptor - 60mm	SL2ADP60D
Dual Spigot Adaptor - 76mm	SL2ADP76D
100mm Square Pole ADP - Single	SL2ADP100SQS
100mm Square Pole ADP - Double	SL2ADP100SQD

## IES Files

IES SL230SI5KN01 75x150deg 30W  
IES SL230SI5KN02 45x155deg 30W  
IES SL230SI5KN03 45x145deg 30W

