

# BEACH FINDS WIND CHIME

*Create a beautiful  
watering can that pours  
sea glass, shells, and  
other beach finds.*

*By Lori Julian*





## SUPPLIES

- Metal watering can with a removable shower head on the spout. You can use an antique metal coffee pot, tea pot, or other container with a spout that has multiple holes in it.
- 10 yards of 25- to 50-pound test fishing line
- 60-75 lightweight pieces of flat sea glass, sea pottery, flat seashells, and/or other beach finds, beads, etc.
- 1 oz. E6000 glue\*
- Painter's tape
- Toothpicks
- Tweezers or needle-nose pliers (optional)
- Template\*\*



## CREATING YOUR STRANDS

1. Print the template and tape pages together. Tape to your work surface with painter's or removable tape.
2. Cut 8 pieces of fishing line, each about 24" long.
3. Select your beach finds for each strand, laying them face down on the template. If you are using shells that are not flat, put the convex (rounded) side up and apply glue to this side.



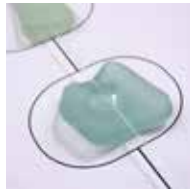
4. Working with one strand at a time, squeeze a pea-sized amount of E6000 in the center of each piece. Leave it for a few minutes so the glue begins to "set up."
5. Tape one end of the fishing line to the work surface just below the bottom item. This will be the bottom of the strand.
6. Carefully stretch the fishing line over the glued glass, through the glue. Tape the other end of the line just above the top piece on the strand. The excess fishing line at the top will be used to attach the strand to the watering can head so it can be long.



\* Be sure to work with E6000 glue in a well-ventilated room.

\*\* Printable templates and a how-to video are available at [bit.ly/bcwindchime](http://bit.ly/bcwindchime).

- Using a toothpick, push the fishing line into the glue on each piece of glass or shell. If needed, add more glue on top to make sure the fishing line is covered with glue.
- Repeat steps 4-7 for each strand. Allow strands to dry for one hour.



### ATTACHING YOUR STRANDS TO THE WATERING CAN SPOUT



- Remove the shower head from the spout on your watering can. Holding the top length of the fishing line, push it through one of the holes on the outer side of the spout towards the opening. Start with the outer holes on the spout and work toward the center.
- Grab the line with your fingers, tweezers, or pliers, pulling gently until the top item on your strand nears the spout.
- Tie a few knots, bigger than the spout holes, pulling tightly.
- Cut the excess fishing line.
- Repeat steps 1-4 for the remaining strands.
- Reattach the shower head to the watering can carefully so as not to tangle the strands. Make sure it is firmly attached. Glue it on if needed.



Your watering can wind chime is now ready to hang in your garden, yard, or home!

ENJOY YOUR DAILY DOSE OF VITAMIN SEA!

### NOTES

- Hang your wind chime on a hook, add a ribbon to hang it, or set it on a flat surface.
- If your watering can is not weatherproof, hang it where it's protected from direct contact with the weather. If you are putting it outside where it might fill with rain or snow, make sure the spout is angled so that water runs out freely.



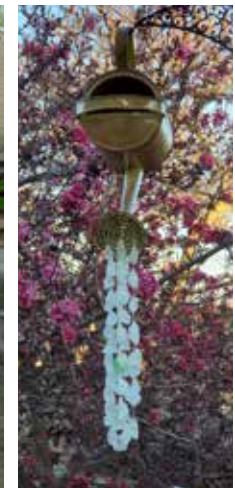
Alice Ahrens



Shauna Coobick 



Alice Ahrens



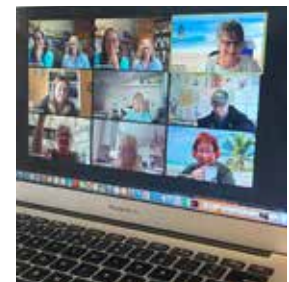
Kathy Tiffany 



Lorraine Walsh 




Jodie Greene 



Mary McCarthy 

Watch a video of the Beachcombing Club workshop and download printable templates and instructions at [bit.ly/bcwindchime](http://bit.ly/bcwindchime)

 Beachcombing Club Member