

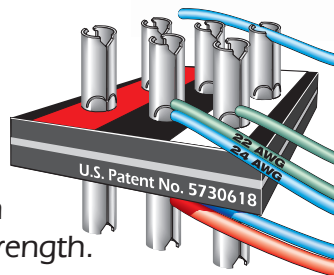
AVP Rapid Punch Terminal (RPT) System

Worldwide installations...
Unsurpassed performance...

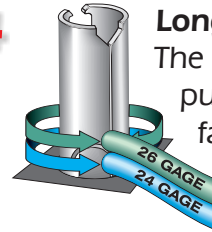


Performance Advantages

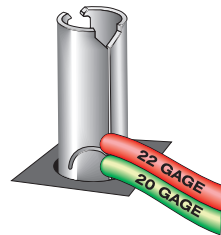
1 Bigger & Stronger
Size plus AVP's rigid mounting technique means unparalleled wire retention, no terminal push-through and overall superior strength.



4 Longer Life
The RPT terminal is certified for 300 punch cycles, using 22 to 26 gage wire, facilitating easy and durable re-configuration at any time.

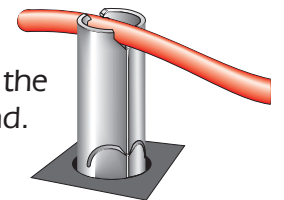


2 Extended Cable Range
The larger diameter barrel allows termination of 20-28 gage wire, solid or stranded, and it properly terminates bulkier 110 Ohm Digital Audio Cable.



3 Multiple Wire Gages
The RPT terminal is certified for termination of different wire gages, **even on the same half of the terminal**. The colored arrows show the four mechanically independent slots.

5 Faster & Easier
The wire gripper locates and retains the wire before the punch enabling quick termination with just one hand.



6 Lifetime Tip Replacement
The AVP heavy-duty punch tip is guaranteed for life (and we're still waiting for the first claim).



AVP Rapid Punch Terminal (RPT) System

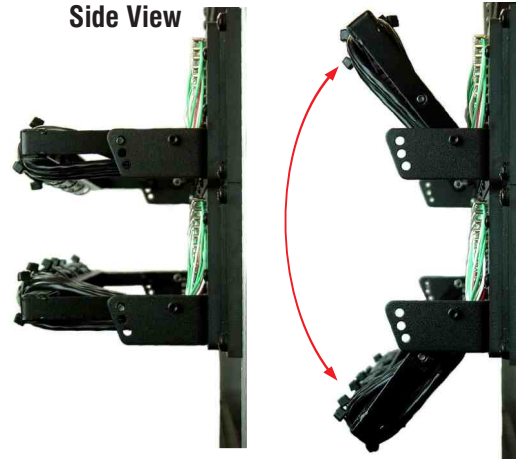
7 Common Sense
Easy and unified integration because AVP panels have consistent color-coding and sequential numbering across the entire product line!

8 Confidence
Terminate wire with 1 punch. The AVP punch tip makes a clear sound indicating a solid, gas-tight termination.

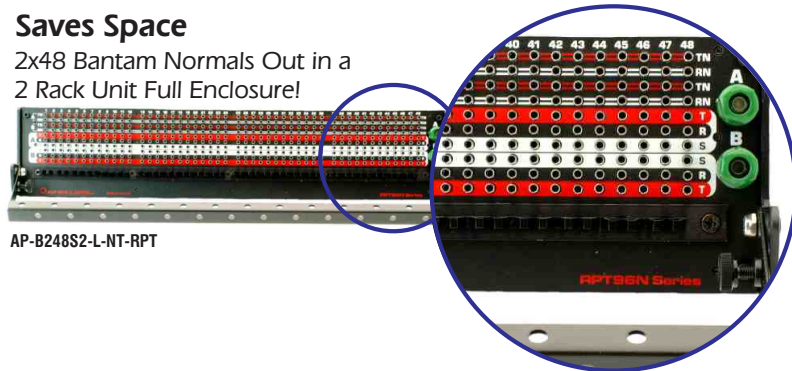
9 Serviceability
Easily replace damaged terminals.



10 RPT Pivoting Cable Bar
Accessibility is significantly improved with the pivoting cable bar, standard on all rack-mounted RPT product.

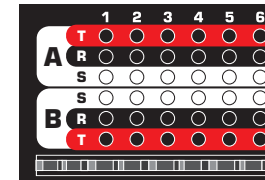


11 Saves Space
2x48 Bantam Normals Out in a 2 Rack Unit Full Enclosure!

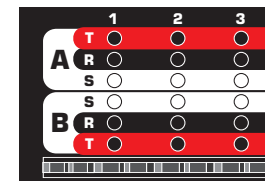


AP-B248S2-L-NT-RPT

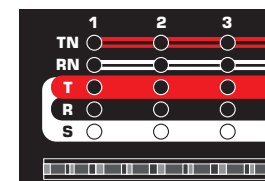
Installation Advantages



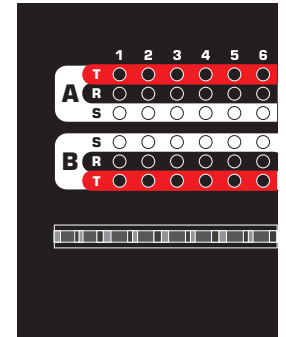
AP-B248S1 Series



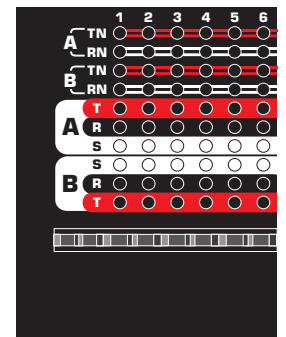
AP-A224E1 Series



AP-A124E1 Series



AP-B248S2 Series



AP-B248S2 Series with Normals Out

AVP Rapid Punch Terminal (RPT) System Standard Patchbay Styles

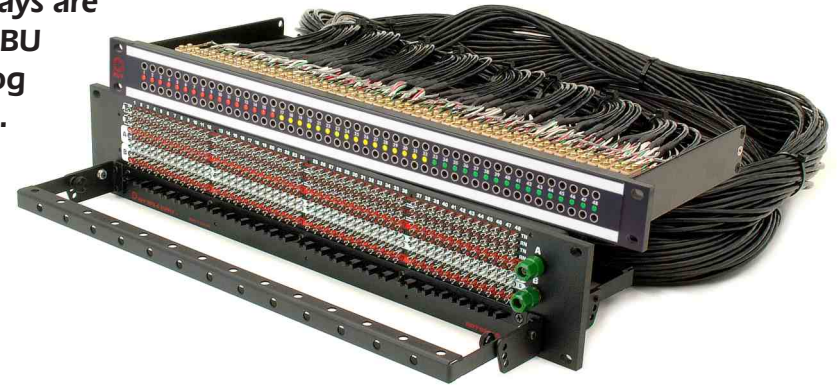
Full Enclosure



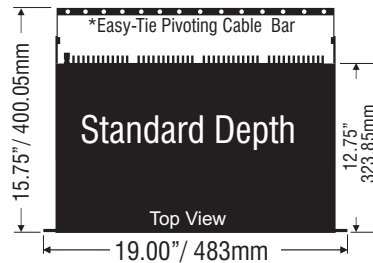
All AVP audio patchbays are suitable for AES/EBU digital and analog audio patching.



Umbilical

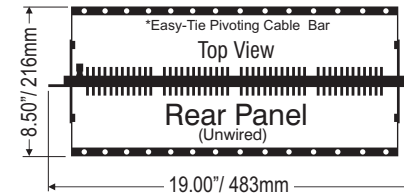


Standard Depth: 15.75", [400.05mm]



Standard umbilical length is 40", [1m]

See ordering details for specifying custom lengths



Tooling



Punch Tool with Tip **Certified 1 Million Punches**
AT-RPT-PTK2

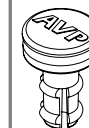


Punch Tip **Lifetime Replacement Warranty**
AT-RPT-TIP2



Removal Tool Kit
AT-RPT-RTK

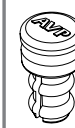
Longframe Audio Dust Plugs



DC-ABK10 ... Dust Plug, fits longframe audio jack, black, package of 10 plugs
DC-ABK50 ... Dust Plug, fits longframe audio jack, black, package of 50 plugs

For jack inside diameter, 0.250" [6.35mm]

Bantam (TT) Audio Dust Plugs

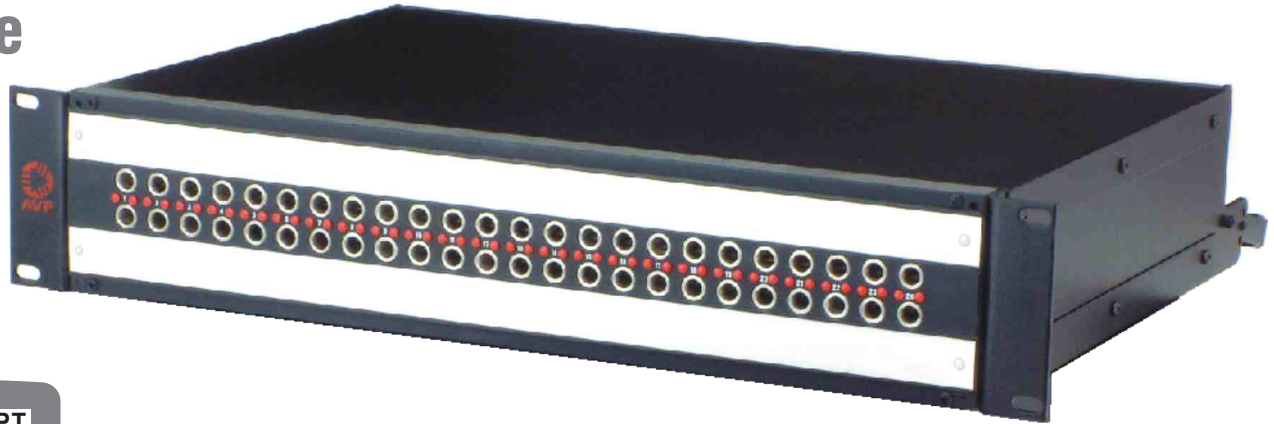


DC-BBK10 ... Dust Plug, fits bantam audio jack, black, package of 10 plugs
DC-BBK100 ... Dust Plug, fits bantam audio jack, black, package of 100 plugs

For jack inside diameter, 0.175" [4.45mm]

AVP Rapid Punch Terminal (RPT) System

Longframe Full Enclosure



- Series**
- A** Mosaic
 - T** Mosaic (Black CIS)

- Number of Jacks per Row**
- 24** 2x24 Jacks

- Panel Height**
- 1** 1 Rack Unit 1.75", 44mm
 - 2** 2 Rack Unit 3.50", 89mm

- Normaling**
- FN** Full Normals installed at jacks
 - HN** Half Normals installed at jacks
 - NN** No Normals
 - FR** Normals Out, with Full Normals installed on the Punch Block, 2RU only
 - HR** Normals Out, with Half Normals installed on the Punch Block, 2RU only
 - NT** Normals Out, 2RU only
 - NTS** Sleeve Normals Out, Switching Grounds, 2RU only

- Options, add to end of Model Number**
- BGHJ** Bussed Grounds at jacks, horizontal
 - SGVJ** Strapped Grounds at each vertical jack pair

Longframe Full Enclosure Ordering Information

Designation Layouts... www.jackfields.com/support

Popular Models	
Model	Description
AP-A224E2-L-NT-RPT	2RU, 2x24 Longframe Jacks, Normals Out, RPT Punch Block
AP-A224E2-L-FN-RPT	2RU, 2x24 Longframe Jacks, Full Normals, RPT Punch Block
AP-A224E2-L-HN-RPT	2RU, 2x24 Longframe Jacks, Half Normals, RPT Punch Block
AP-A224E1-L-FN-RPT	1RU, 2x24 Longframe Jacks, Full Normals, RPT Punch Block
AP-A224E1-L-HN-RPT	1RU, 2x24 Longframe Jacks, Half Normals, RPT Punch Block

Audio Patchcords

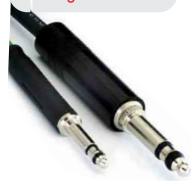
For 110 Ohm AES/EBU Digital and Analog Audio Application



- Patchcord Type**
- B** Bantam
 - L** Longframe

- Patchcord Length**
- 1** 1' [300mm]
 - 1.5** 1.5' [450mm]
 - 2** 2' [600mm]
 - 3** 3' [900mm]
 - 4** 4' [1200mm]
 - 6** 6' [1800mm]
 - 10** 10' [3.05m]

- BLACK**
- RED**
- GREEN**
- BLUE**
- YELLOW**
- PURPLE**
- ORANGE**
- WHITE**



example... LPC-3-GREEN