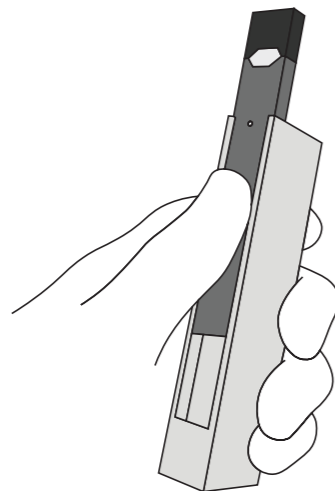


Kite'

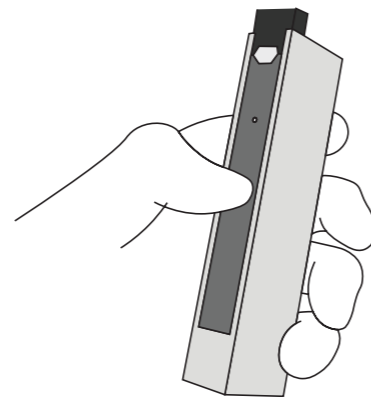


Portable Charger
for E-Cigarette

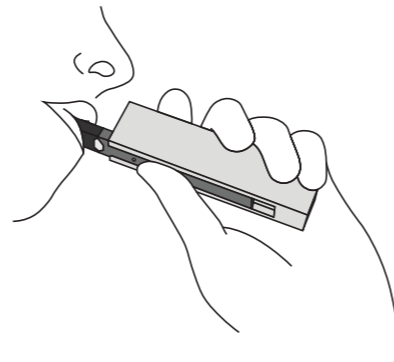
USER GUIDE



SLIDE YOUR JUUL™



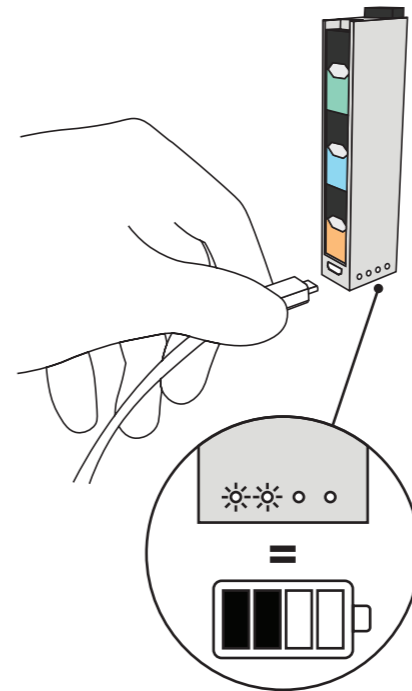
STORE & CHARGE
YOUR JUUL™



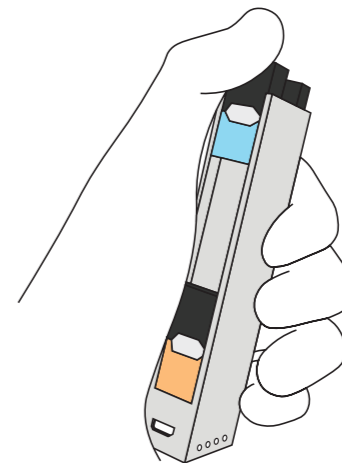
HIT YOUR JUUL™



ENJOY IN
DESIGNATED AREA



CHARGE KITE



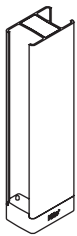
STORE YOUR PODS

Kite'

www.kitecharger.com

Manufactured for Common Man Products, LLC
101 West 23rd St, #135, New York, NY 10011

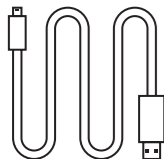
INCLUDED IN BOX



Kite Charger



User Manual



Micro USB
Charging Cable

INSTRUCTIONS FOR USE

Charging the Kite Charger

Use the supplied cable to connect your Kite to a USB charging port to initiate charging. Make sure the USB charger has a minimum output of 5V1A.

When charging, the indicator will light up and blink to show that power is being transferred. When Kite is fully charged, all 4 indicators will be lit up, and you may unplug the micro USB. It usually takes 1 hour to achieve a full charge.

Note: Inserting the JUUL™ into Kite charger while charging from a USB power source will allow both JUUL™ and Kite to charge.

Charging JUUL™

Slide your JUUL™ USB side down into the Kite to initiate charge. When properly engaged, the LED lights will illuminate indicating charging is in process. When JUUL™ indicator lights turn off, JUUL™ is fully charged.

Note: Always remove skin or any cover from JUUL™ before inserting into Kite.

INSTRUCTIONS FOR USE

Check Your Kite's Battery Level

The Kite charger indicators will light up for a couple of seconds every time you insert the JUUL™ into the charger. The indicators represent the remaining battery level left in the charger:

- 1x LED = 1 - 25%
- 2x LED = 26 - 50%
- 3x LED = 51% - 75%
- 4x LED = >75%

Low level indicator: When the battery level is lower than 3%, the first LED light will blink indicating that it is time to charge the Kite.

Pod Storage

Kite can store up to three pods in the outer channel. Simply slide pods into holder along side. To release, push the pods upwards.
Note: Please make sure the pod cap is on to avoid leakage.

SAFETY INSTRUCTIONS

Ventilation and Heat Sources

Do not place the charger in direct sunlight, in a microwave, or near heat sources such as radiators or fires.

Candles and Open Flames


Do not place lit candles or tea lights on top of, or at the sides of the product. Do not allow any open flames near the product.

Cleaning and Care

Use a soft dry cloth, or for stubborn stains use a soft cloth with a diluted mild detergent. Do not use alcohol-based fluids or abrasive materials.

Care for the Battery

Do not store the charger for extended periods with the battery completely discharged. Keep the battery charged as much as possible to extend the life of your charger. Do not use if battery has been damaged.

 This appliance complies with European Safety & Electrical Directives

SAFETY INSTRUCTIONS

FCC Warning Statements


This device complies with Part 15 of the FCC Rules. Operation is subject to the following two conditions: (1) this device may not cause harmful interference, and (2) this device must accept any interference received, including interference that may cause undesired operation. Caution: The user is cautioned that changes or modifications not expressly approved by the party responsible for compliance could void the user's authority to operate the equipment.

Note: This equipment has been tested and found to comply with the limits for a Class B digital device, pursuant to part 15 of the FCC Rules. These limits are designed to provide reasonable protection against harmful interference in a residential installation. This equipment generates uses and can radiate radio frequency energy and, if not installed and used in accordance with the instructions, may cause harmful interference to radio communications. However, there is no guarantee that interference will not occur in a particular installation. If this equipment does cause harmful interference to radio or television reception, which can be determined

SAFETY INSTRUCTIONS

by turning the equipment off and on, the user is encouraged to try to correct the interference by one or more of the following measures:

- Reorient or relocate the receiving antenna.
- Increase the separation between the equipment and receiver.
- Connect the equipment into an outlet on a circuit different from that to which the receiver is connected.
- Consult the dealer or an experienced radio/TV technician for help.

 Do not open, or attempt to open, the casing. There are no user-serviceable parts inside. Damage caused by opening the casing may void the warranty. This product features an internal Lithium-ion battery, please treat with care. Improper handling may result in fire, personal injury and damage to property. Disassembling or puncturing the battery can cause an explosion or fire.

SAFETY INSTRUCTIONS

Age Restrictions

NOT FOR SALE TO MINORS

Keep away from children and pets.

Abide by all local laws. Vaping may be prohibited in certain locations and under the age of 21. It is your responsibility to comply with all local laws, regulations and requirements.

No Affiliation

This product is not authorized, endorsed by or otherwise affiliated with JUUL™ Labs, Inc.

*JUUL™ is a registered trademark of JUUL Labs, Inc. (www.juul.com)

SPECIFICATIONS

Dimensions:

102 x 17.5 x 27mm

Battery:

Lithium-ion 700 mAh

Country of Origin:

China

Technical specifications are subject to change without notice.

Charging Time:

1hr

Power In:

Micro USB 5V 1A DC

LIMITED WARRANTY

Kite charger comes with a one (1) year limited warranty from the date of retail purchase by the original purchaser. Warranty provides for a free replacement product for any defects or malfunctions. You must pay shipping charges. Proof of purchase required. This warranty gives you specific legal rights, and you may also have other rights which vary from state to state.

For warranty service contact us at support@kitecharger.com.