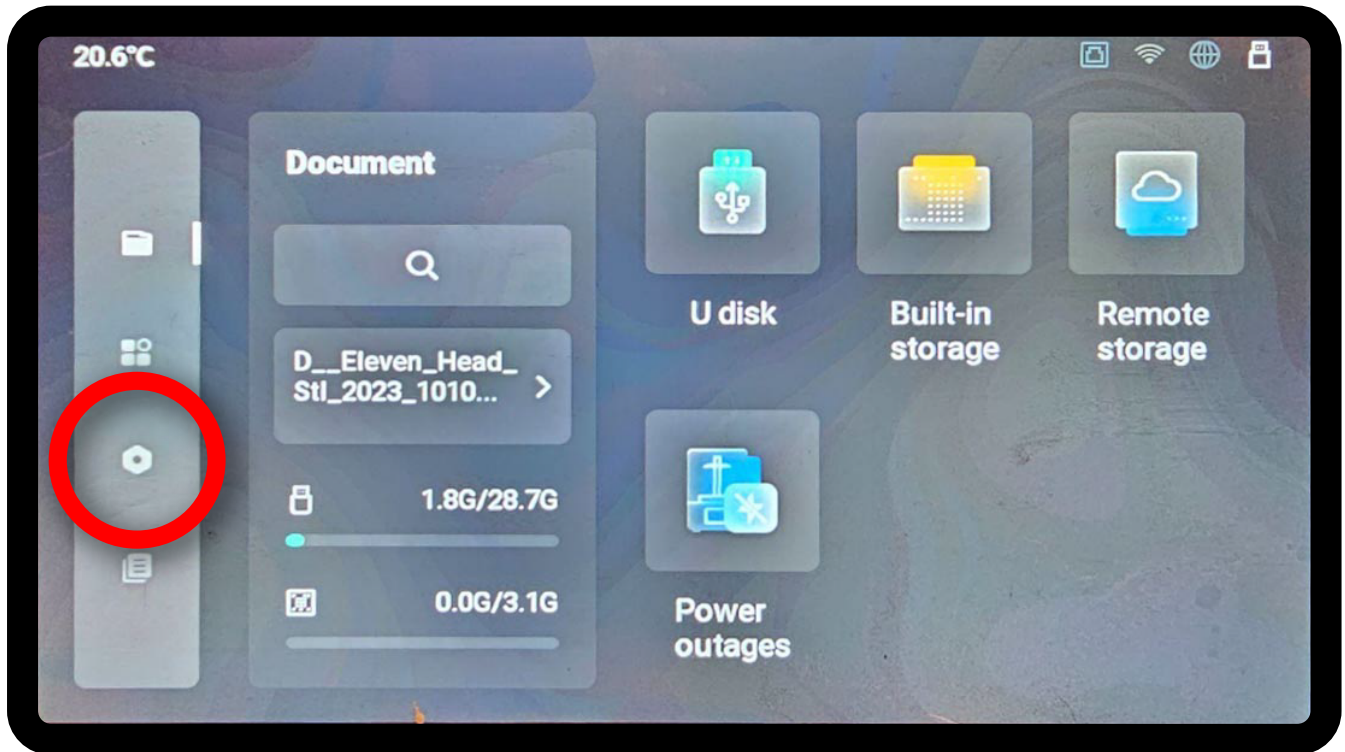
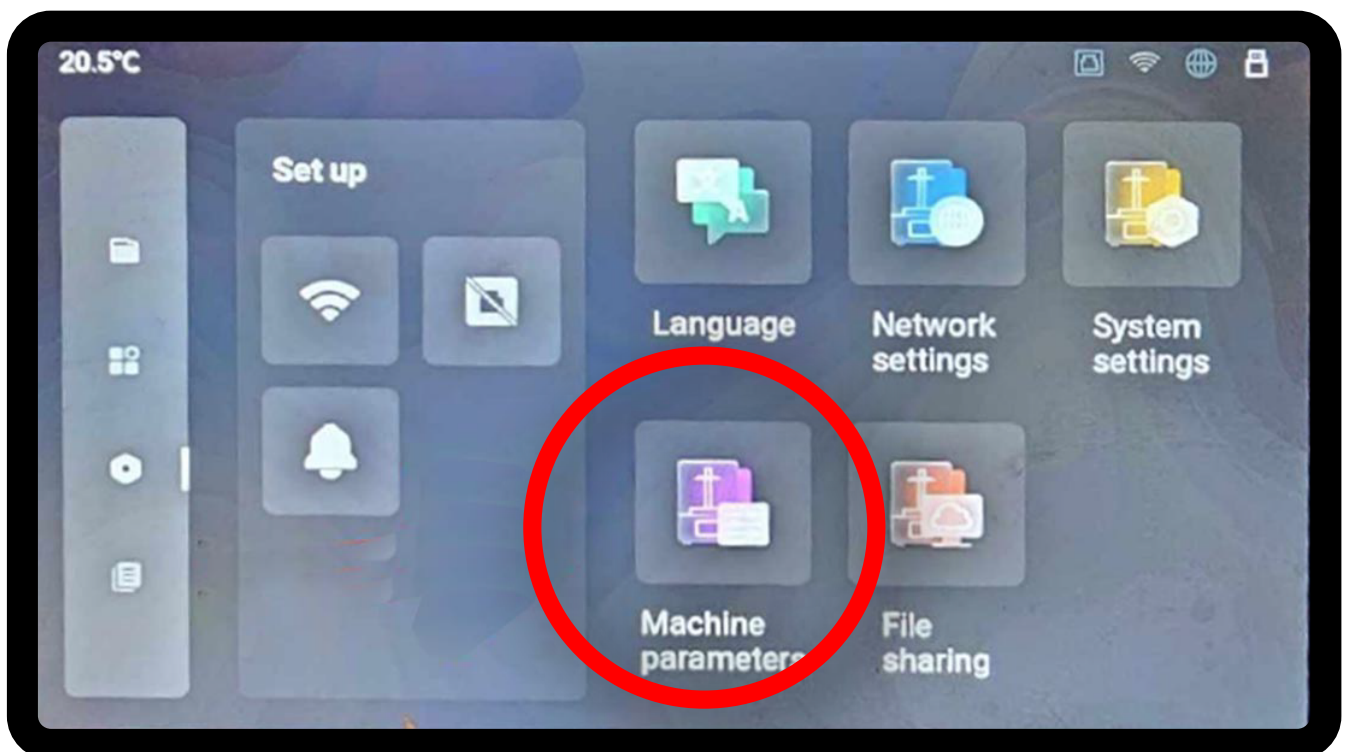


After the machine is powered on, hit the third button down on the left side.

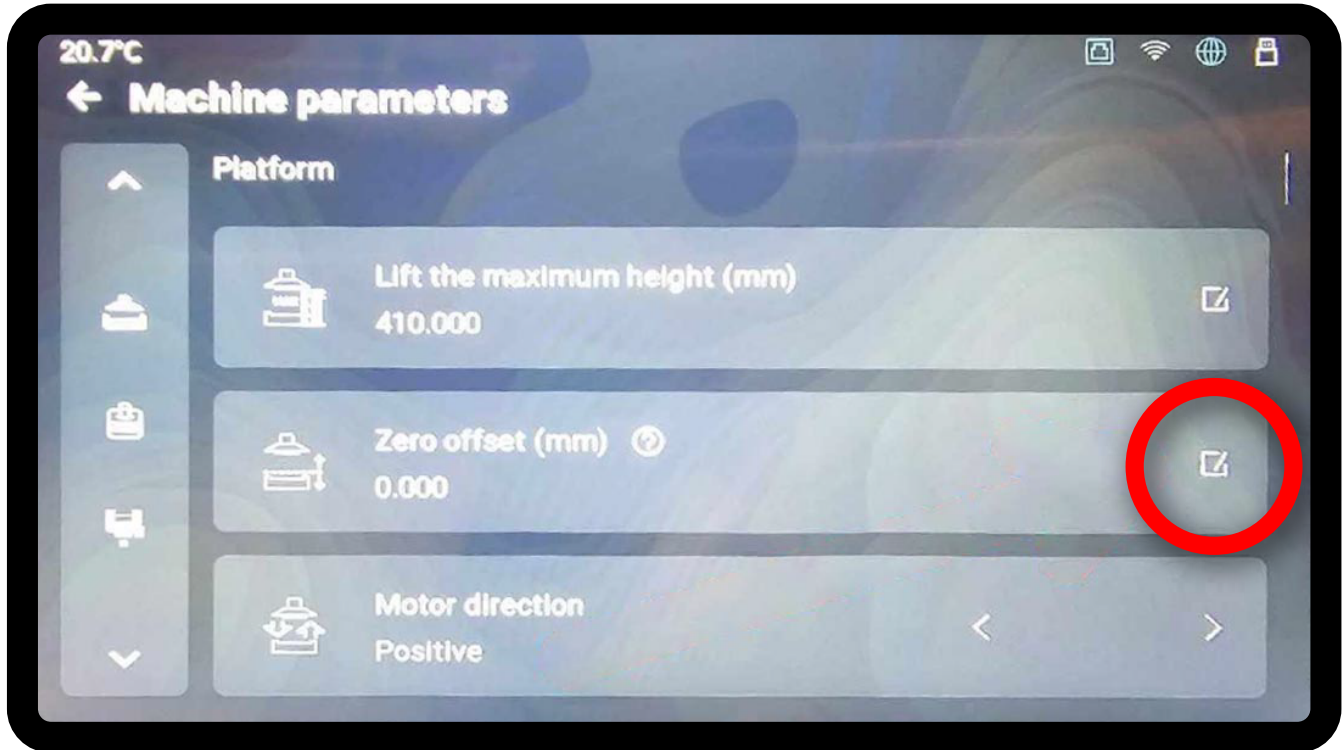


This will take you to the set up screen

Select Machine Parameters

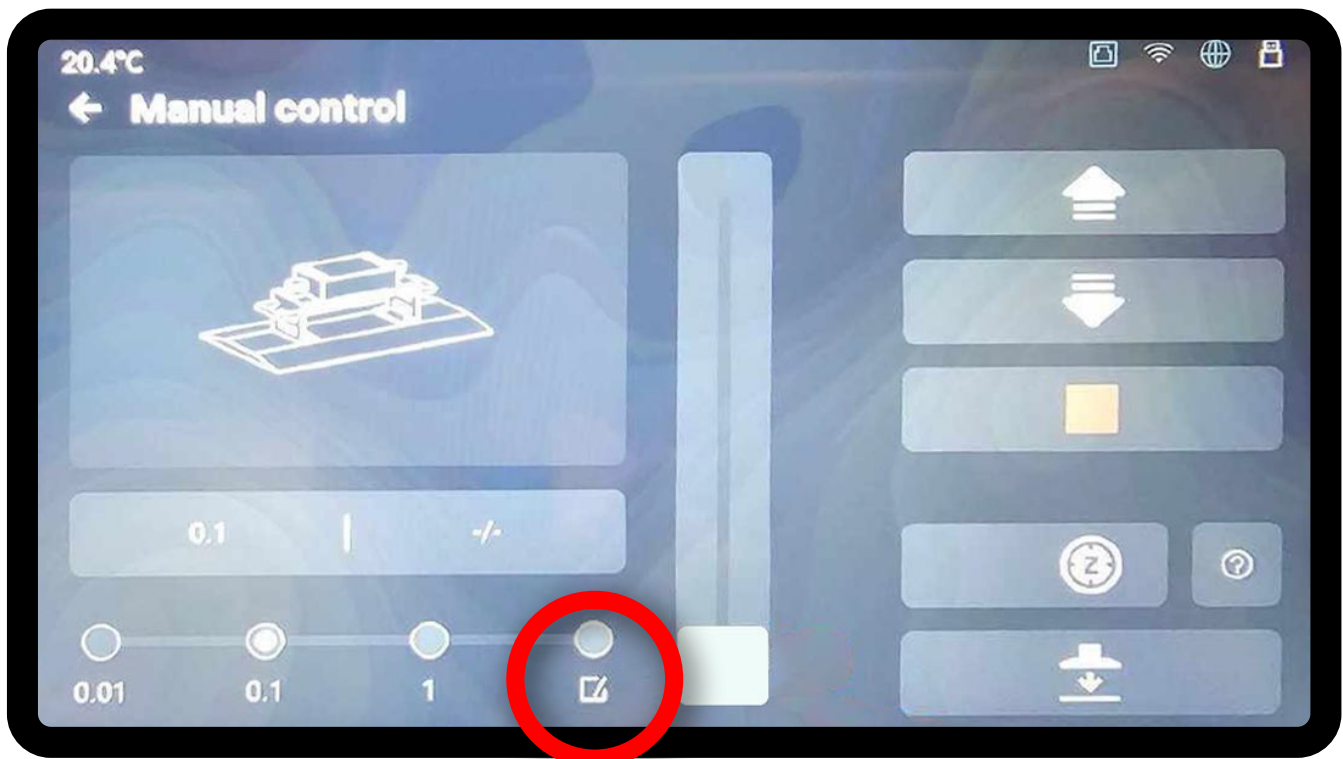


Click on the Edit Button on the right side of the Zero offset bar



Here you will find the option to micro adjust the Z offset or enter a value. Apex Maker comes default at 0.00 with home set by manufacturer.

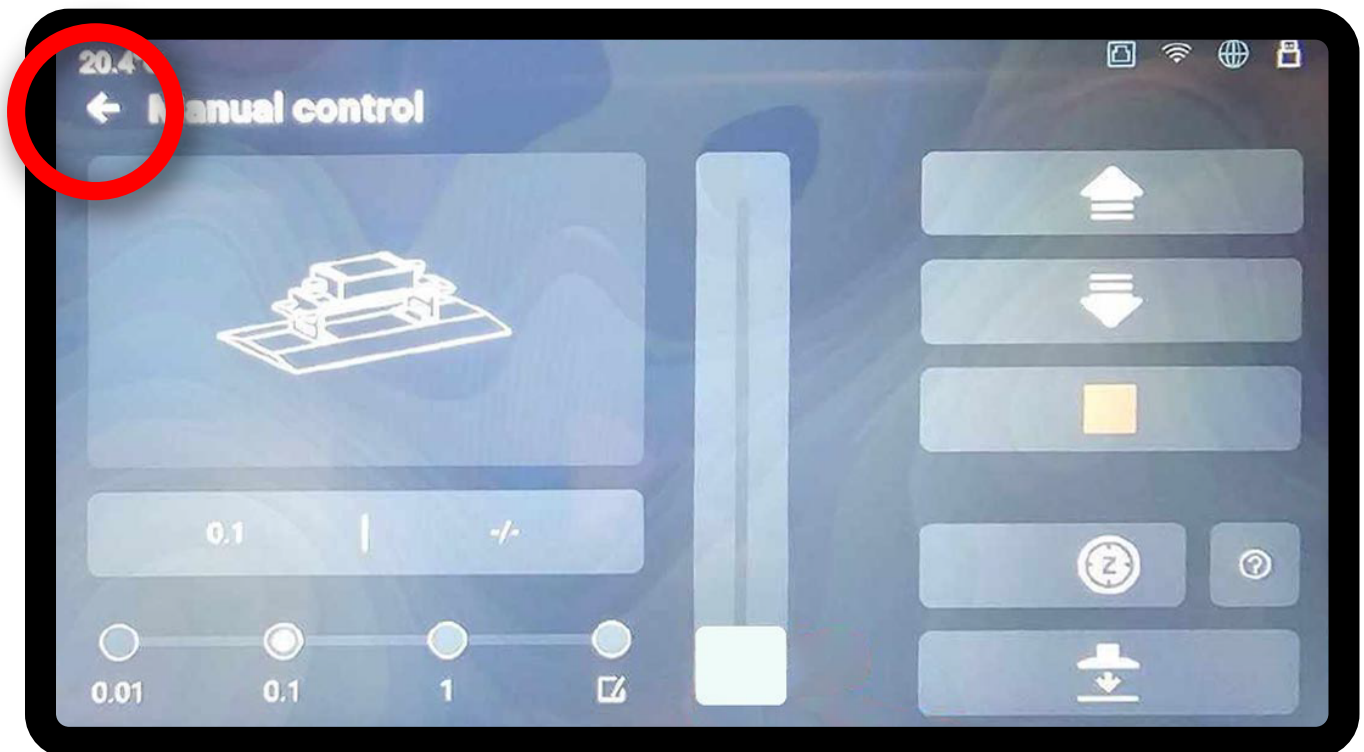
We will need to hit the Edit button.



Enter a new value of 3.8 (which is the thickness of the XTR)
and hit enter (blue check mark)

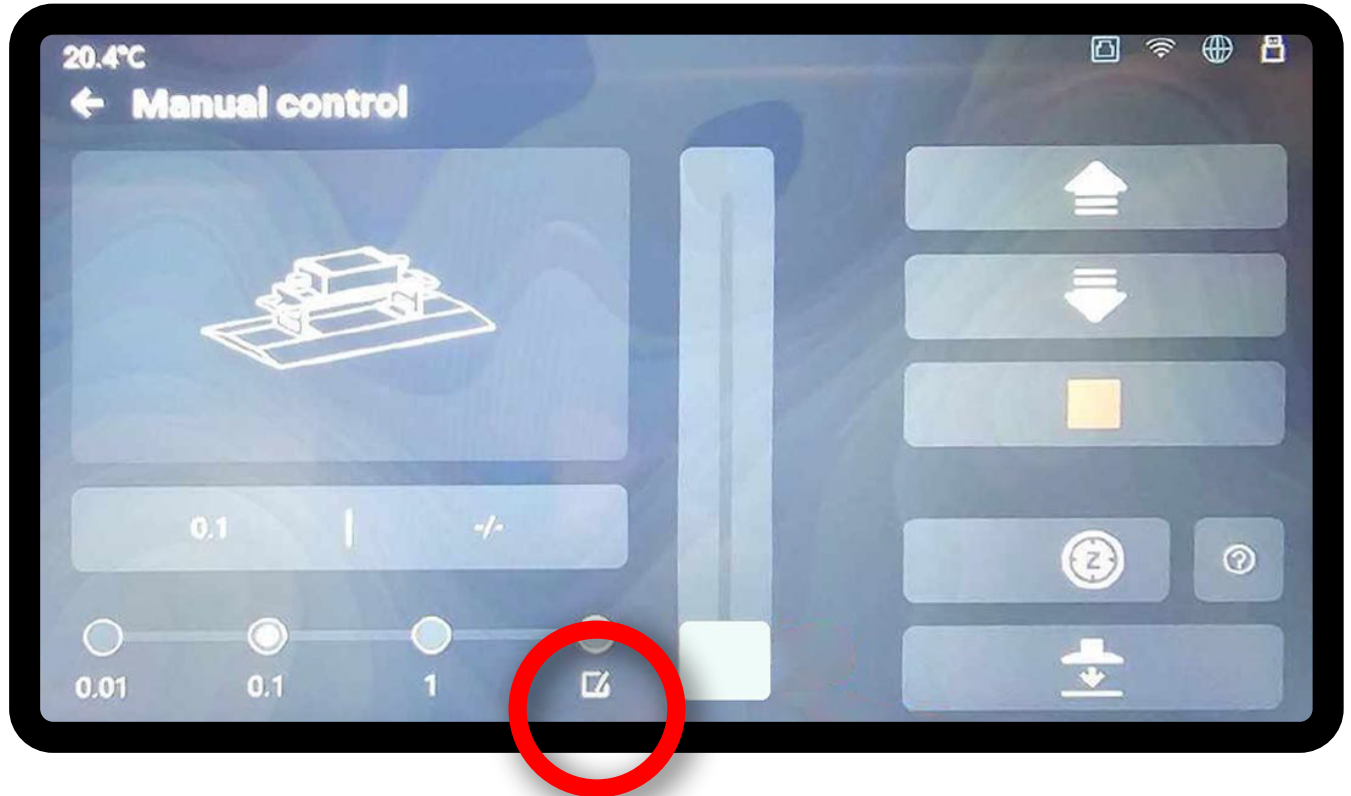


hit the Back Arrow to return to the previous screen

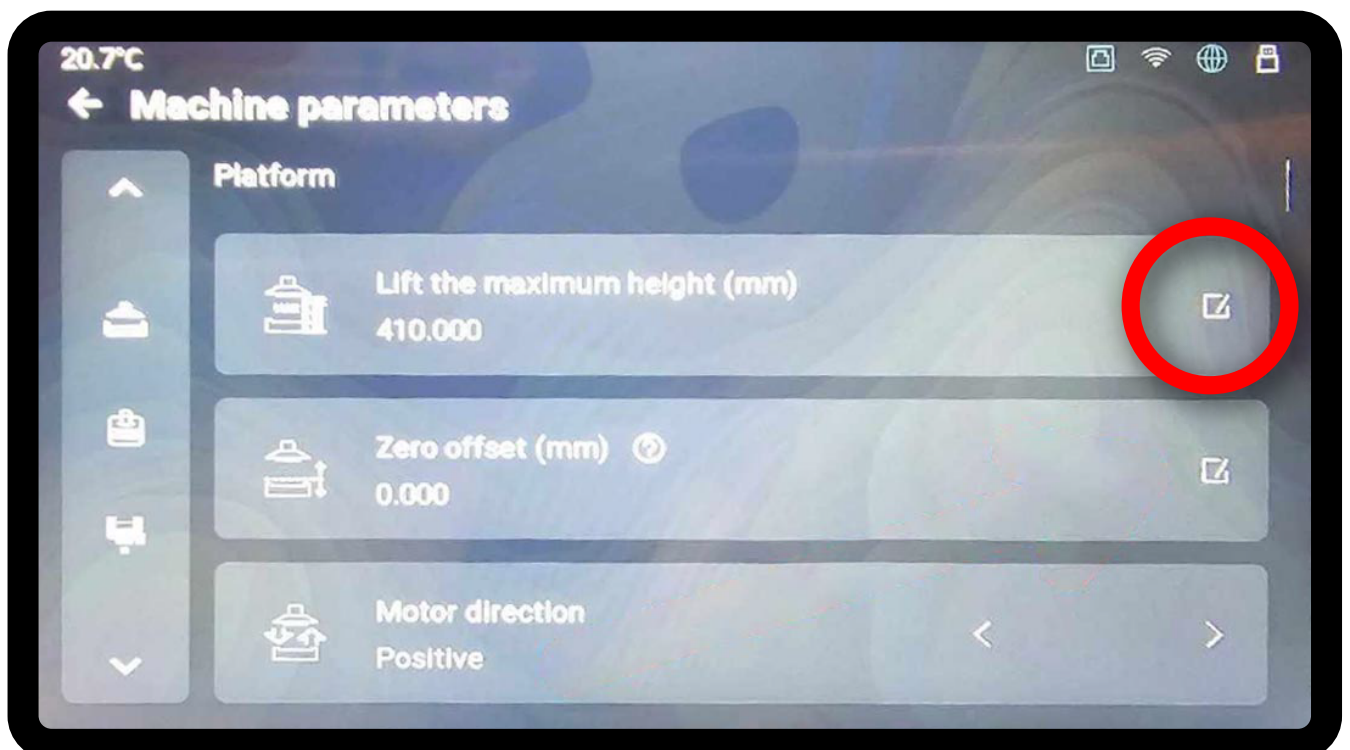


Now we need to adjust the maximum lift height to accompadate the changed home

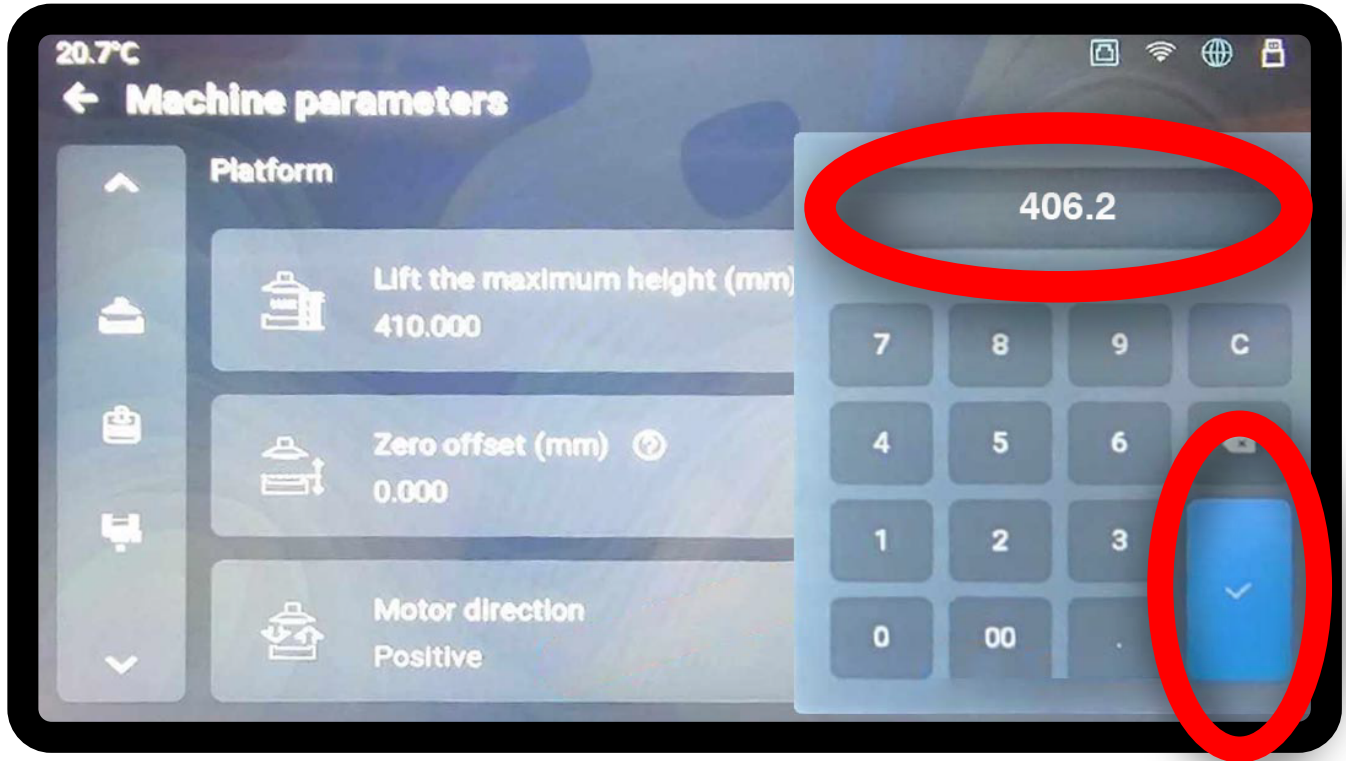
We will need to hit the Edit button.



Click on the Edit Button on the right side of the Lift maximum height Button



Set to 406.2 and hit Enter



Once done hit the back arrow until you are at the Main Menu and power cycle the machine by turning it off and on. This will set your parameters to work with the Wham Bam XTR kit!