

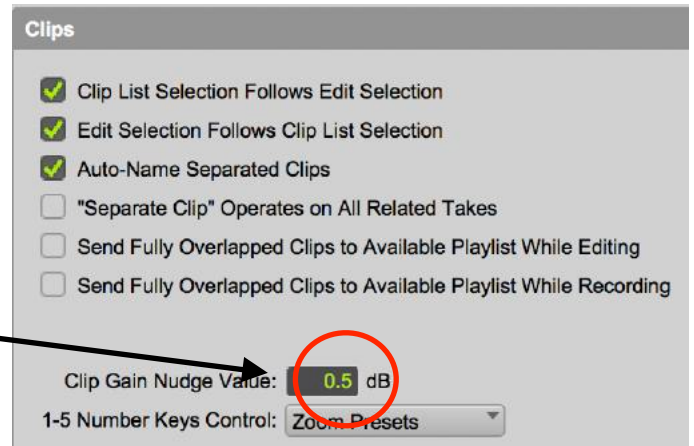
Defaulter

Clip Gain Normaliser

v2

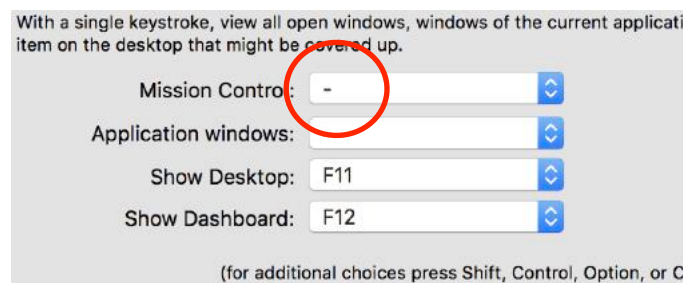
Please ensure the following before using Defaulter:

--- Change your clip gain to 0.5db steps in ProTools prefs. (This setting is 0.5 by default)

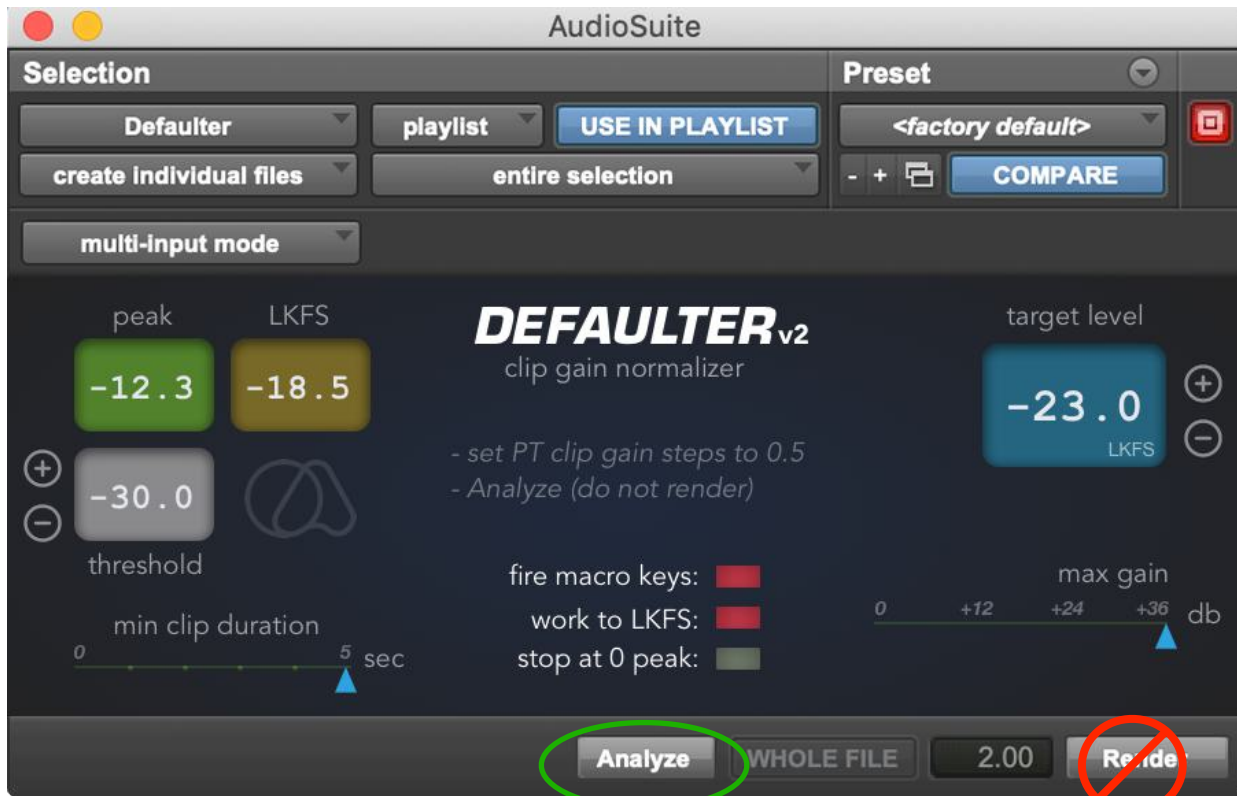


--- Make sure your OS is not using the clip gain key commands : shift + control + up & down arrows

--- Make sure your OS is not using the select next clip command: Control + Tab (check in OSX preferences --> Mission Control)



— On Mojave and later, allow Pro Tools accessibility privileges. See <https://quietart.co.nz/defaulters> for details.



--- To start, select a clip and hit **Analyze (not Render)**

--- Click “**work to LKFS**” for **ITU-R BS.1770** standard K-weighted operation.

--- Defaulter will analyze the clip’s peak or LKFS value and make clip gain adjustments to meet the target value in 0.5db steps.

--- Clips with peaks below the threshold will be ignored.

--- Clips shorter than “min clip duration” setting will be ignored.

--- You can determine max gain applied to clips with the “max gain” slider. Say, if the selected clip measured -40Lkfs, and your target is -24Lkfs, normally 16db of gain would be applied to meet the target. However, if you have your “Max Gain” set at 12db, then regardless of reaching the target, only 12db of gain will be applied.

--- If you select “stop at 0 peak”, clip gaining will stop once reached 0 peak regardless of loudness (LKFS) level.

If you'd like to automate the process, click "fire macro keys" and follow these steps:

(Please note, these macros are supplied as a courtesy, Quiet Art Ltd. is not affiliated with Keyboard Maestro or Stairways Software)

- Download the macro desktop app Keyboard Maestro to use with **supplied macros. Copy Defaulter1.7.kmmacros from the installer to your documents and double click to import to Keyboard Maestro:** <http://www.keyboardmaestro.com/main/>

(Trial version works for a while but you can purchase it with an exclusive discount: <http://www.stairways.com/action/kmdiscount?QUIETART>)

- Or use another macro app with your own macros using these key commands:

*After each clip is processed Defaulter will send **Control + TAB** and then this combo: **shift + control + option+ command + 0***

*After a few attempts on same clip (end of session on track) : **shift + control + option+ command + 1***

- Delete all fades before selecting the first clip.

- Close all other Audio Suite windows.

- Our macros are designed to run Defaulter on a single track, and then move down and start over. If your clips are checker-boarded and not overlapping, you can simply select all tracks with first clip and modify the move down macro to stop the process at the end of timeline.

- To start, select the first clip on the timeline and hit **Analyze** (not Render) Defaulter will do adjustments on each subsequent clip one at a time.

- Create a blank track on the bottom of the tracks so that the macro is fooled to stop.

FOR FREQUENTLY ASKED QUESTIONS AND
TROUBLESHOOTING PLEASE GO TO: [http://quietart.co.nz/
defaulters](http://quietart.co.nz/defaulters)

Copyright Quiet Art Ltd. 2020

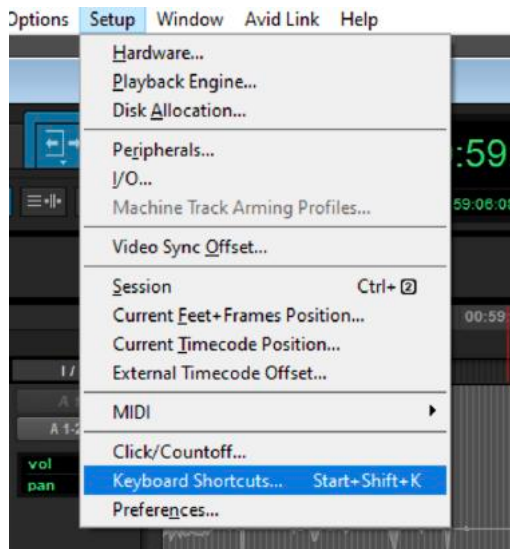
Defaulter

Clip Gain Normaliser

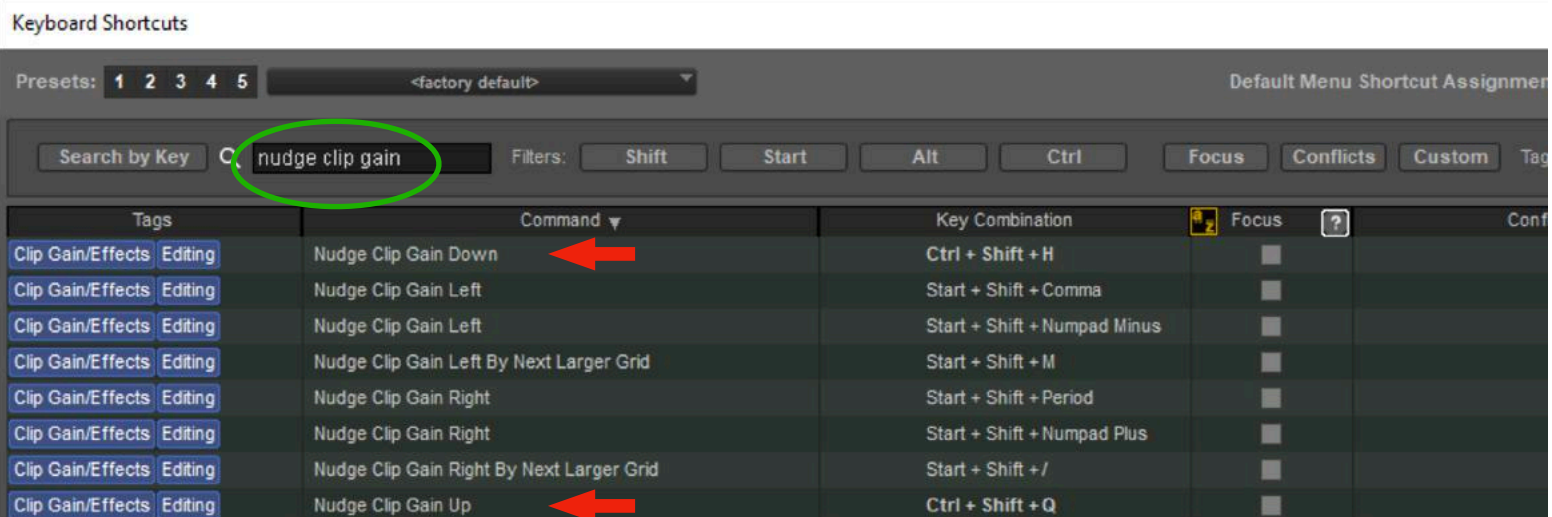
v2

ATTENTION: Defaulter Windows version will only work in Pro Tools 2022.6 and above. It requires the following edits made to Pro Tools Keyboard Shortcuts:

In Pro Tools, go to *Setup -> Keyboard Shortcuts*



In the search window, enter “Nudge Clip Gain” to filter out the list. And locate **Nudge Clip Gain Down** and **Nudge Clip Gain Up** shortcuts.



Tags	Command	Key Combination	Focus
Clip Gain/Effects Editing	Nudge Clip Gain Down	Ctrl + ShiPress new short	<input type="checkbox"/>
Clip Gain/Effects Editing	Nudge Clip Gain Left	Start + Shift + Comma	<input type="checkbox"/>
Clip Gain/Effects Editing	Nudge Clip Gain Left	Start + Shift + Numpad Minus	<input type="checkbox"/>
Clip Gain/Effects Editing	Nudge Clip Gain Left By Next Larger Grid	Start + Shift + M	<input type="checkbox"/>
Clip Gain/Effects Editing	Nudge Clip Gain Right	Start + Shift + Period	<input type="checkbox"/>
Clip Gain/Effects Editing	Nudge Clip Gain Right	Start + Shift + Numpad Plus	<input type="checkbox"/>
Clip Gain/Effects Editing	Nudge Clip Gain Right By Next Larger Grid	Start + Shift + /	<input type="checkbox"/>
Clip Gain/Effects Editing	Nudge Clip Gain Up	Ctrl + Shift + Q	<input type="checkbox"/>

Double-click the Key Combination for ***Nudge Clip Gain Down*** and enter the following keys: **Ctrl + Shift + H**

Tags	Command	Key Combination	Focus
Clip Gain/Effects Editing	Nudge Clip Gain Down	Ctrl + Shift + H	<input type="checkbox"/>
Clip Gain/Effects Editing	Nudge Clip Gain Left	Start + Shift + Comma	<input type="checkbox"/>
Clip Gain/Effects Editing	Nudge Clip Gain Left	Start + Shift + Numpad Minus	<input type="checkbox"/>
Clip Gain/Effects Editing	Nudge Clip Gain Left By Next Larger Grid	Start + Shift + M	<input type="checkbox"/>
Clip Gain/Effects Editing	Nudge Clip Gain Right	Start + Shift + Period	<input type="checkbox"/>
Clip Gain/Effects Editing	Nudge Clip Gain Right	Start + Shift + Numpad Plus	<input type="checkbox"/>
Clip Gain/Effects Editing	Nudge Clip Gain Right By Next Larger Grid	Start + Shift + /	<input type="checkbox"/>
Clip Gain/Effects Editing	Nudge Clip Gain Up	Ctrl + ShiPress new short	<input type="checkbox"/>

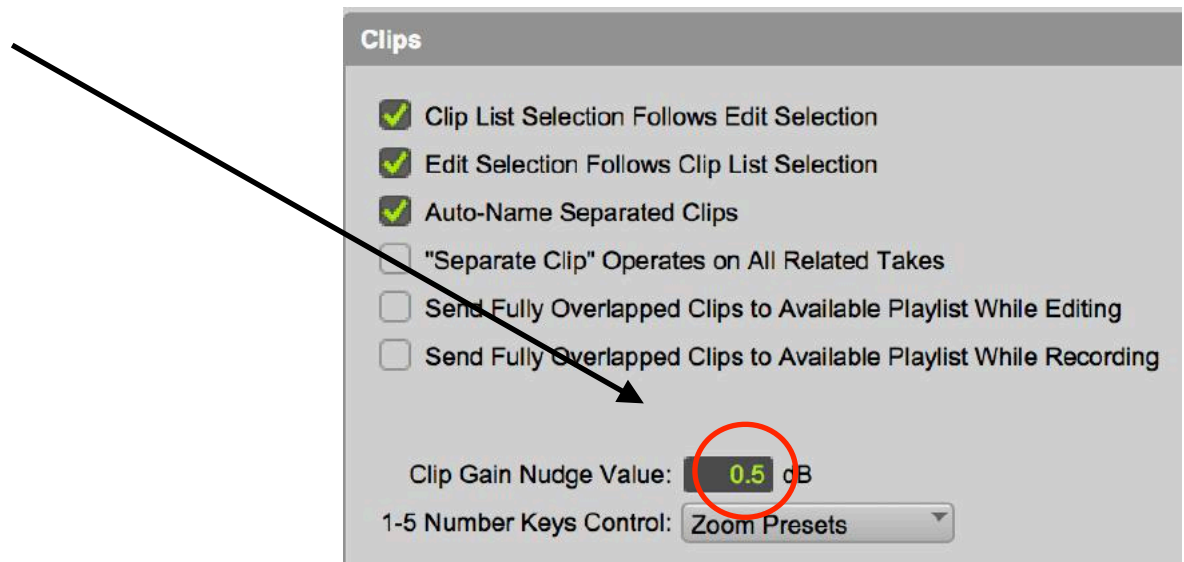
Double-click the Key Combination for ***Nudge Clip Gain Up*** and enter the following keys: **Ctrl + Shift + Q**

Next, search the list with the words “move edit” and locate “**Move Edit Selection To Next Clip**”. Double-click and enter “**Ctrl + Shift + X**”.

You can go ahead and save these as a preset.

Tags	Command	Key Combination
Selection	Move Edit Selection To Next Clip	Ctrl + Shift + Numpad 9
Selection	Move Edit Selection To Next Clip	Ctrl + Shift + X

Open Pro Tools preferences and change your clip gain to 0.5db steps. (This setting is 0.5 by default)



- To start, select a clip and hit Analyze (**not Render**)
- Click “**work to LKFS**” for **ITU-R BS.1770** standard K-weighted operation.

- Defaulter will analyze the clip’s peak or LKFS value and make clip gain adjustments to meet the target value in 0.5db steps.

- Clips with peaks below the threshold will be ignored.

- Clips shorter than “min clip duration” setting will be ignored.

- You can determine max gain applied to clips with the “max gain” slider. Say, if the selected clip measured -40Lkfs, and your target is -24Lkfs, normally 16db of gain would be applied to meet the target. However, if you have your “Max Gain” set at 12db, then regardless of reaching the target, only 12db of gain will be applied.

- If you select “stop at 0 peak”, clip gaining will stop once reached 0 peak regardless of loudness (LKFS) level.

FOR FREQUENTLY ASKED QUESTIONS AND TROUBLESHOOTING PLEASE GO TO: <https://quietart.co.nz/defaulters>

Copyright Quiet Art Ltd. 2022