

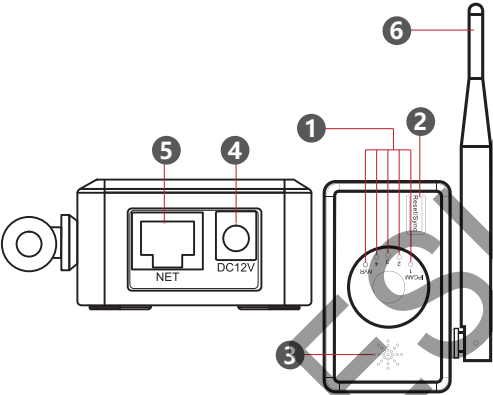
YESKAMO

I. Product Instruction

Generally, the signal power will gradually decay during transmission because of the loss. When the signal power is attenuated to a certain extent, the signal will be distorted which will cause reception errors. The repeater is designed to solve this problem. The main function of repeater is to increase the distance of signal transmission by re-sending or forwarding the data signal. The new launched IP camera repeater is perfect for home or office security camera system.

1.Product Appearance

- 1 Indicator ----Indicate the signal status of each IPC
- 2 Match Code/reset button ----Press 3s and start matching code
- 3 Speaker ----Warning tone when matching code
- 4 Power ----Power supply
- 5 Network port ----Connect to NVR/switch
- 6 Antenna ----to receive Wi-Fi signal



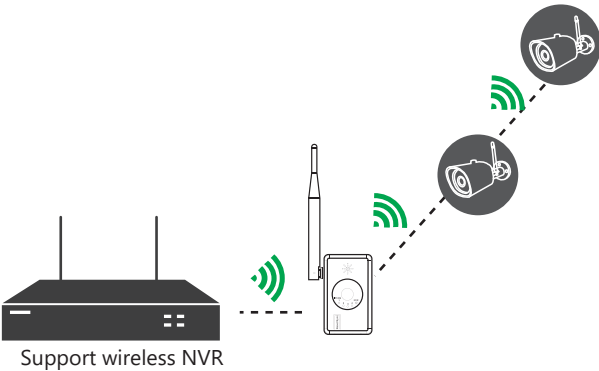
2.Dimension & Specification

Wi-Fi	802.11b/g/n 2.4G	
Capacity	4 wireless IPC	
Indicator	5 LED indicators, 4 for IPC signal state, 1 for NVR connection state	
	1xRJ45 100Mbps network interface	Match code with IPC, Video output
	1xReset button	One key to match code, reset
	1x12V Power supply	Power supply for the router
Dimension	74x31x186MM	

II. Connection Instruction

the security market

----- The IPC Router!



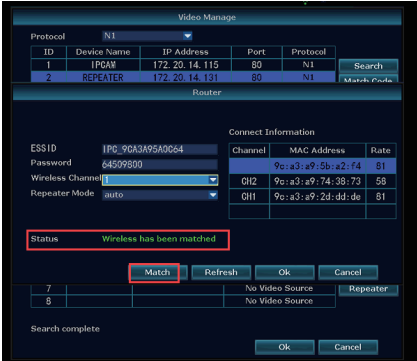
- 1 Plug the whole system to power outlet via the provided power adapter, make sure the camera video is displayed on the monitor. You will fail to add camera to IPC repeater if camera video doesn't display on the monitor.
- 2 Plug IPC repeater to power outlet via the provided power adapter, the indicator light (NVR) at front panel of IPC repeater will turn on.

- 3 Use Ethernet cable to connect IPC repeater with NVR recorder.

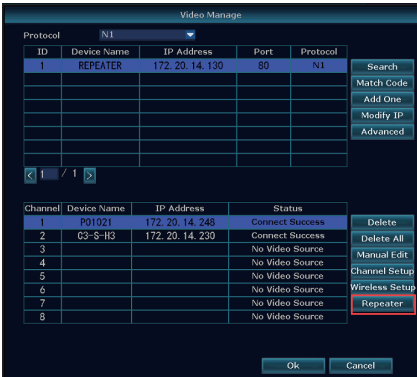
- 4 Right click mouse to enter main menu > "Video Manage" > click "Search"> the information of repeater pop up in the upper box.



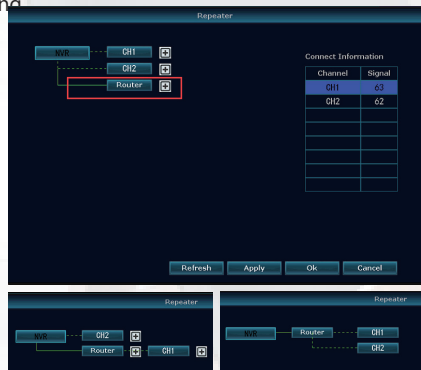
- 5 Double left click "REPEATER" in the upper box, the repeater's connect information pop up in a new box, then left click "Match" icon.
- 6 The "Status" shows "Wireless has been matched" if match succeeds.



- 7 Remove the Ethernet cable between IPC router and NVR recorder.
- 8 Back to "Video Manage" interface, and click the "Repeater" icon in the lower box.



- 9 Click the "+" behind "Router", and then choose the channel (CH1, means channel 1, camera 1.) which you want to expand signal. Then click "Apply" and "Ok" to save the setting.

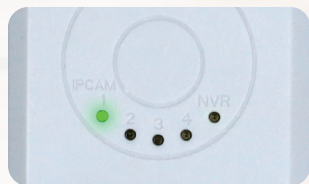


Note:

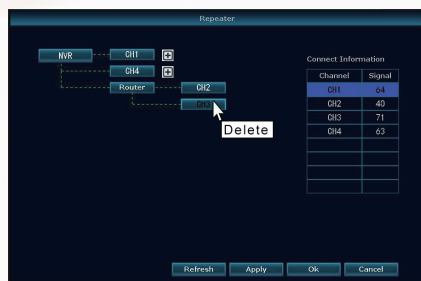
The green line between NVR and channel (or router and channel) indicates the connection is successful. The red line indicates the connection failed.

- 10 What if you add wrong channel, and how to delete?

Right click the mouse to enter main menu > "Video Management". On "Video Manage" interface, click the "Repeater" icon in the lower box. Then move your arrow to the connected channel, then you can see "Delete", delete it by left click "CH", then click the "+" behind "Router", and then choose the channel which you want to expand signal. Then click "Apply" and "Ok" to save the setting.



- 11 The IPCAM indicator light 1 turns on and blinking. Number 1 means one camera connected.



- 12 Now you can unplug and move the repeater and cameras. Please install cameras in your demand area, and position repeater between cameras and NVR system.

Note:

- 1) The IPC repeater is NOT waterproof, only indoor use, please install it between connected cameras and NVR.
- 2) Theoretically, the IPC repeater will increase Wi-Fi range up to 150%. But it will be influenced by working environment, obstacles, and walls.
- 3) Please connect NVR and repeater to LAN port of router by Ethernet cable, if 2-3 walls or obstacles in your area. There will be less signal loss during transmission by wired connection.

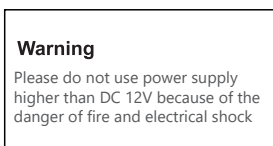
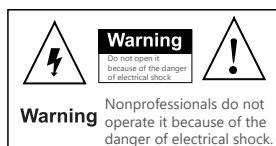
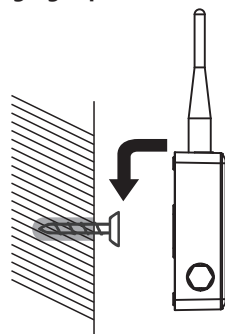
FAQ:

Q1: What if fail to setup repeater for the expand camera or camera fails to be searched?

- 1) Please take the camera nearby NVR and Repeater
- 2) Please double confirm wireless signal of the camera (right click to enter main menu > Network Setup > Wi-Fi setup)
- 3) Match code/pair the camera again (refer to camera's full manual user).

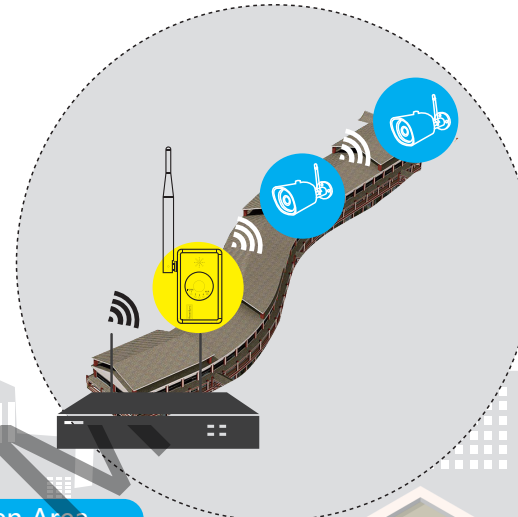
III. Installation

1. Fix green wall plugs on wall
2. Fix screws in wall plugs
3. Hanging repeater in screws



IV.Application Scenarios

In a Galley



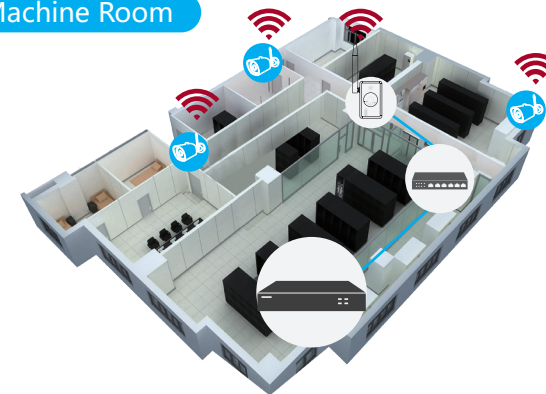
Open Area



In Elevator



Machine Room



Indoor Refit



Install in Courtyard

