



Starry Knight SK30





StarryKnight SK30

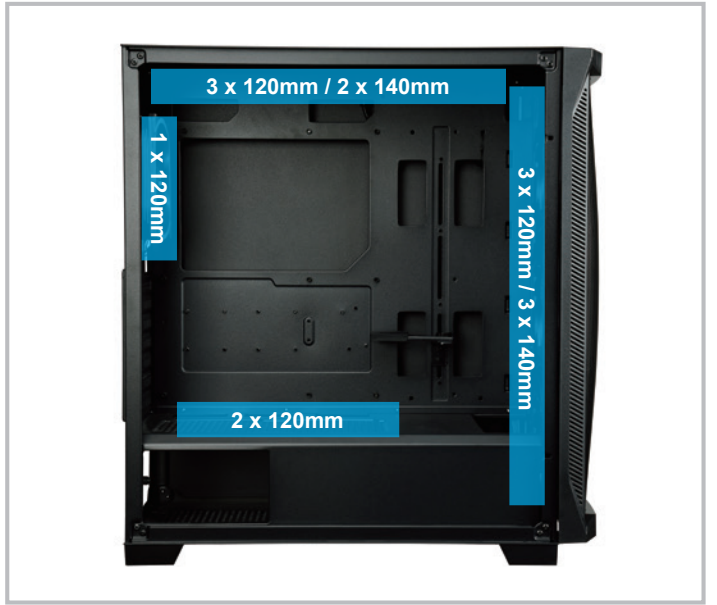
- *Dazzling RGB by pre-installed 4 x SquA ARGB fans*
- *Support vertical GPU installation by vertically expansion slot*
- *Tool-less GPU holder to protect system component from sagging*
- *Curved mesh surface design provides best air-flow*
- *6-ports control hub supports addressable RGB lighting synchronization*

Features

- **Excellent expandability**
 - Support to install E-ATX motherboard for high-end system built.
 - Up to 200mm PSU installation by removable HDD cage.
 - Two-vertically expansion slots supports GPU vertical installation needs.
- **Outstanding cooling capacity**
 - Total two 360mm radiators installation at the top and in the front to keep system stay cool.
 - Maximum NINE fans installation provides the best air-flow in the chassis.
 - Curved mesh surface design for excellent ventilation.
- **User-friendly**
 - Side I/O ports panel design unaffected users to rebuilt front panel parts.
 - Tool-less GPU holder to protecting system component from sagging and stability.
 - Removable dust filters on both top and bottom sides to clean easily.
- **Dazzling RGB**
 - Build-in 6 ports LED control HUB supports addressable RGB lighting synchronization.
 - Pre-installed 4 SquA RGB fans present unique RGB lighting effects.
 - 13 pre-set lighting effects through IO reset button.



Total two 360mm radiators installation at the top and in the front



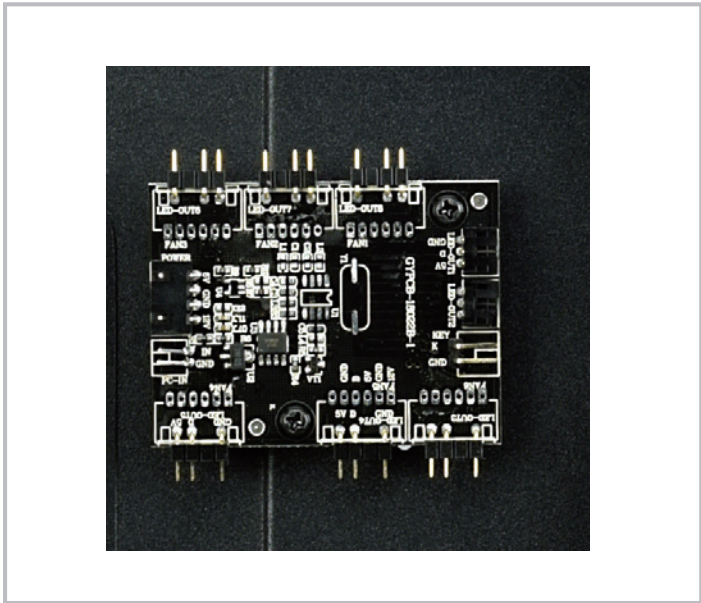
Maximum NINE fans installation provides best air-flow in the chasis



Curved mesh provide outstanding ventilation



Tool-less GPU Holder

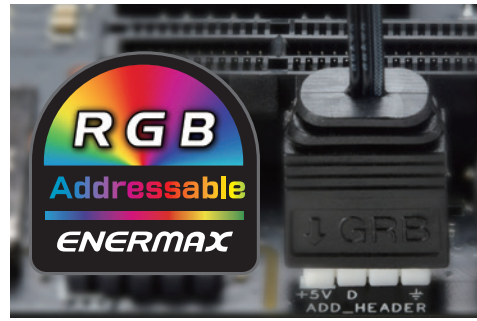
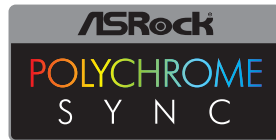


Build-in 6 ports Addressable RGB control hub



7-horizontally & 2-vertically expansion slots

2 ways to control addressable RGB lighting effects



Through Motherboard Software

Users can sync the RGB lighting with motherboards featuring addressable RGB headers (3 pin assignment is 5V/D/G)



Through Computer Case

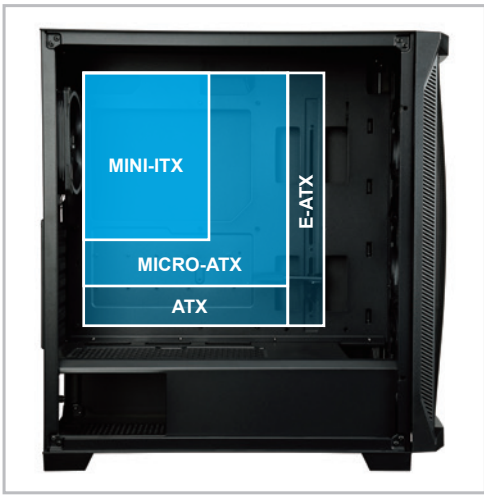
Users can use the *lighting control button to adjust Preferred lighting effects (13 pre-set lighting effects : Rainbow, Snake, Peach & Green scroll, Colors breathe, Colors scroll, Bilateral colors scroll, Red, Green, Blue, White, Yellow, Azure, and Peach.)

* Long press the lighting control button for 2~3 seconds to switch the RGB sync controlled by M/B or case

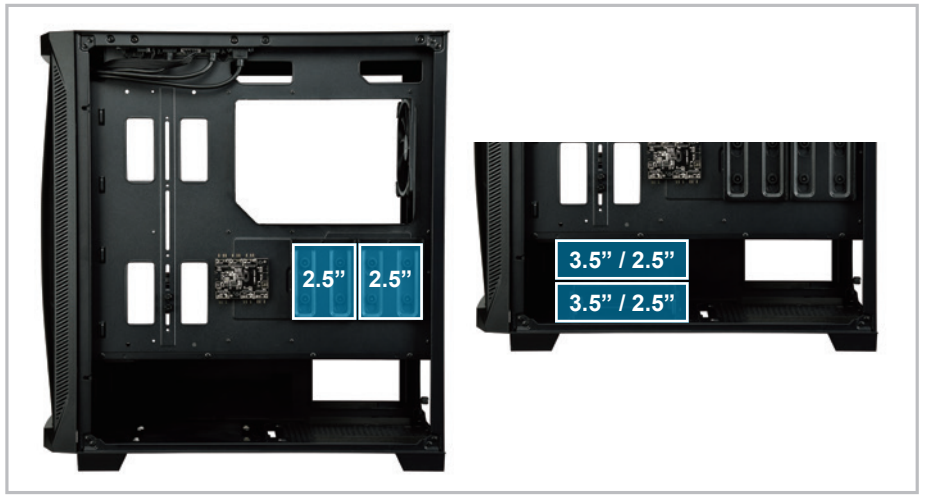
* The reset button located on the front I/O panel is replaced by the lighting control button



Dust filter on both top and bottom side



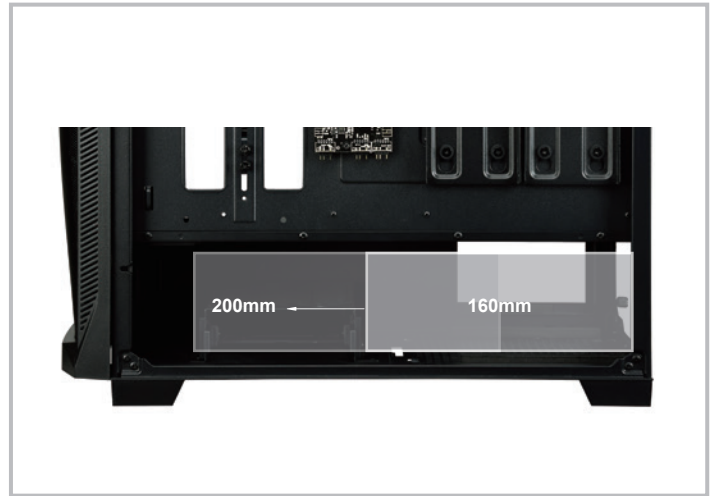
Interior configuration –
MINI-ITX to E-ATX motherboard compatibility



Support total 2 x 3.5" and 4 x 2.5"
(2 x converted from 3.5" HDD Cage) drive bays)



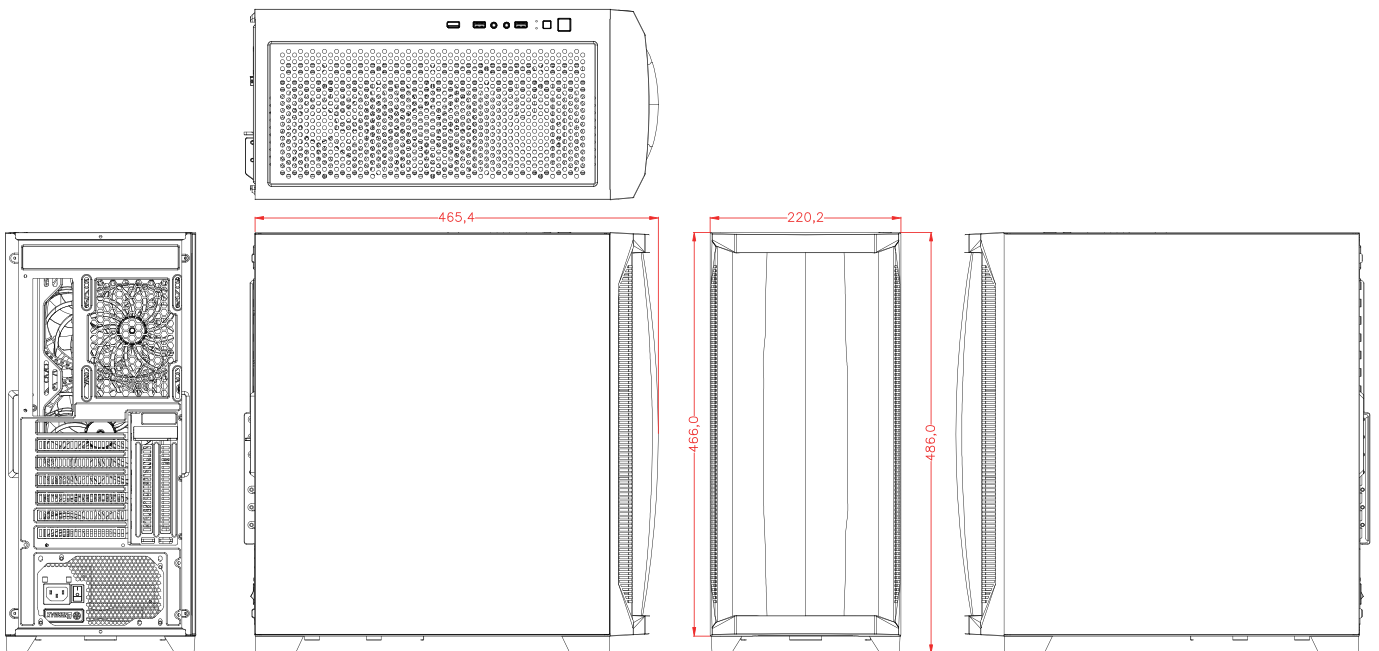
Support up to 405mm VGA installation. (Excluded radiator)



Removable HDD cage for maximum PSU install

Dimension

unit : mm



Specifications

Model Number		ECA-SK30-BB-ARGB	ECA-SK30-BB-ARGB-01
Dimensions (Case)		D465 x W220 x H486mm	
Material		Tempered Glass, SPCC	
M/B Type		E-ATX, ATX, Micro-ATX, Mini-ITX	
I/O		USB3.2 Gen 1 x 2 , USB2.0 x 1 , HD Audio x 1	
Drive Bays	3.5"	2	
	2.5"	4 (2x converted from 3.5" HDD Cage)	
Expansion Slots		7 + 2 Vertical	
Fan Support	Front	3 x 140mm / 3 x 120mm (Pre-installed 3 x 140mm SquA RGB)	3 x 140mm / 3 x 120mm (Pre-installed 3 x 140mm SquA RGB HUB ARGB)
	Top	2 x 140mm / 3 x 120mm	
	Rear	1 x 120mm (Pre-installed 120mm SquA RGB)	
	PSU Tunnel	2 x 120mm	
Radiator Support	Front	360 / 280 / 240mm	
	Top	360 / 280 / 240mm	
	Rear	120mm	
Clearance	PSU	160mm (Incl. HDD Cage), 200mm (Excl. HDD Cage)	
	VGA Card	405mm (Excluded radiator)	
	CPU Cooler	170mm	
Cable Routing Space		25mm	
Shipping Information			
Barcode	EAN	4713157726452	4713157726469
	UPC	819315026458	819315026465
Carton Dimension		D526 x W282 x H521mm	
Gross Weight		8.6 kg	
Net Weight		7.5 kg	

*Product specifications are subject to change without notice.

*Options vary by countries or regions.

*For detailed information please visit our website at www.enermax.com

