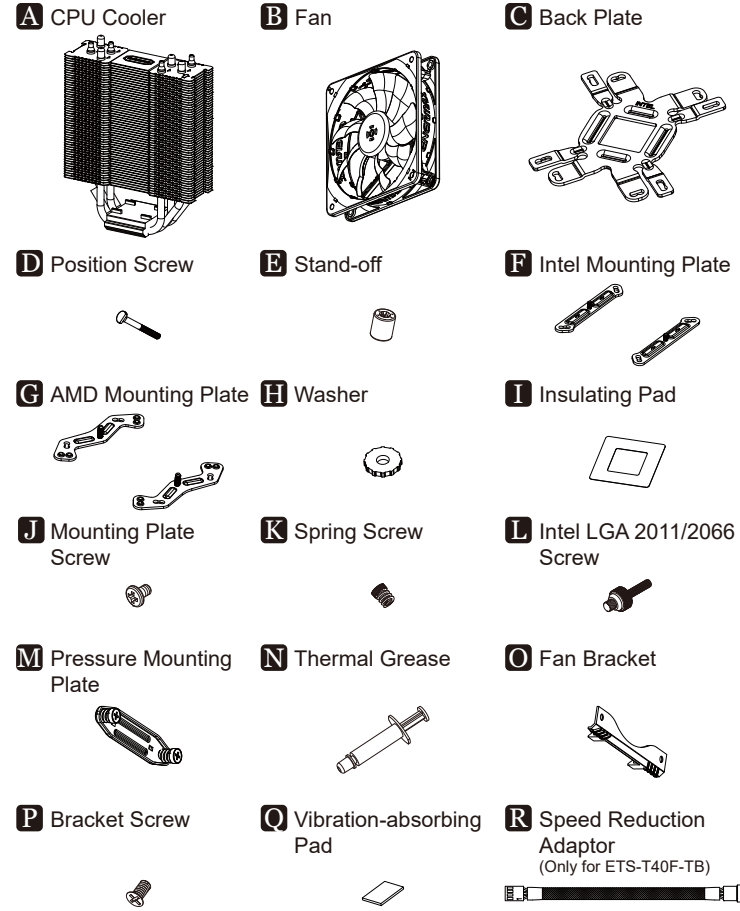


Part List

ETS-T40fit

100% RAM compatibility Air CPU Cooler

©2021 ENERMAX TECHNOLOGY CORPORATION. All right reserved. Specifications are subject to change without prior notice. Some trademarks may be claimed as the property of others.



\*Notice: Actual specifications / product parts may vary according to different regions or countries.

Installation

Step 1-A-1

\* LGA775/1200/115x/1366

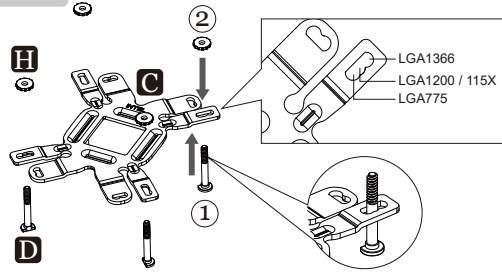


Table with 10 rows and 2 columns (Language, Instruction). Languages include EN, DE, FR, IT, PL, ES, RU, TW, CN, KR, JP, ID.

Step 1-A-2

\* LGA775/1200/115x/1366

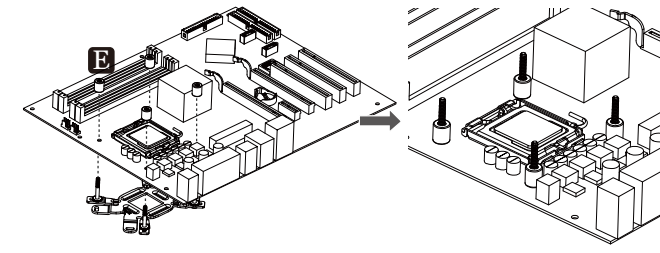


Table with 10 rows and 2 columns (Language, Instruction). Languages include EN, DE, FR, IT, PL, ES, RU, TW, CN, KR, JP, ID.

Step 1-B

\* Intel LGA 2011/2066

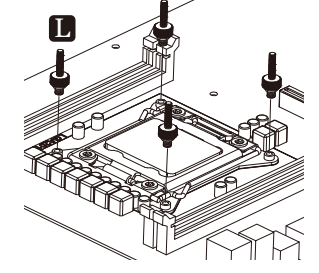


Table with 10 rows and 2 columns (Language, Instruction). Languages include EN, DE, FR, IT, PL, ES, RU, TW, CN, KR, JP, ID.

Step 2 \* For Intel installation

\* LGA2066/2011-x/1200/115x/1366/775

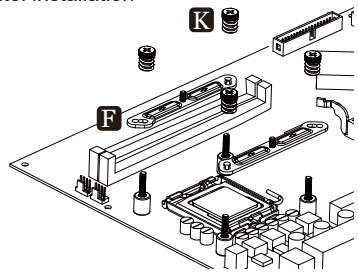
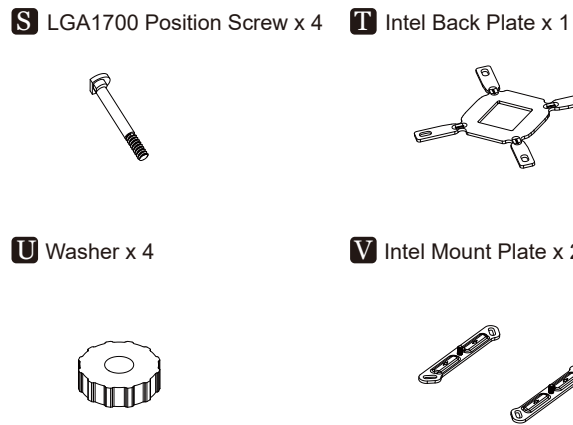


Table with 10 rows and 2 columns (Language, Instruction). Languages include EN, DE, FR, IT, PL, ES, RU, TW, CN, KR, JP, ID.

LGA1700 Part List



Step 3

\* LGA1700

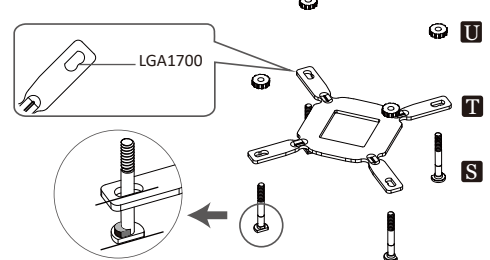


Table with 10 rows and 2 columns (Language, Instruction). Languages include EN, DE, FR, IT, PL, ES, RU, TW, CN, KR, JP, ID.

Step 4 \* For Intel installation

\* LGA1700

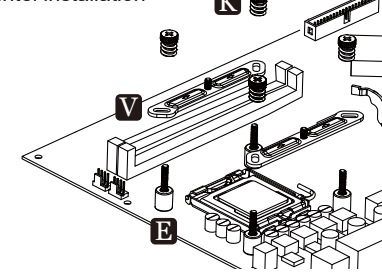


Table with 10 rows and 2 columns (Language, Instruction). Languages include EN, DE, FR, IT, PL, ES, RU, TW, CN, KR, JP, ID.

Step 5-1 \* For AMD installation

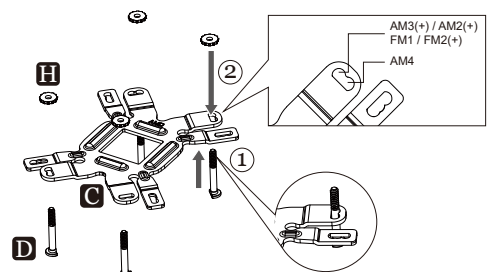


Table with 10 rows and 2 columns (Language, Instruction). Languages include EN, DE, FR, IT, PL, ES, RU, TW, CN, KR, JP, ID.

Step 5-2 \* For AMD installation

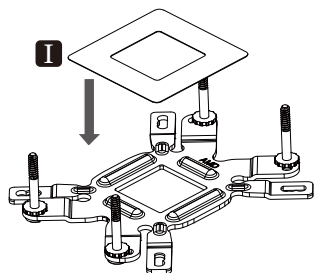


Table with 10 rows and 1 column, containing instructions for Step 5-2 in various languages: EN, DE, FR, IT, PL, ES, RU, TW, CN, KR, JP, ID.

Step 5-3 \* For AMD installation

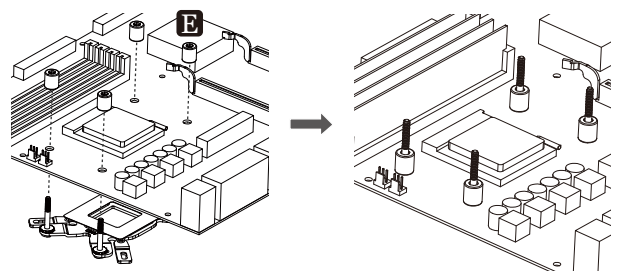


Table with 10 rows and 1 column, containing instructions for Step 5-3 in various languages: EN, DE, FR, IT, PL, ES, RU, TW, CN, KR, JP, ID.

Step 5-4 \* For AMD installation

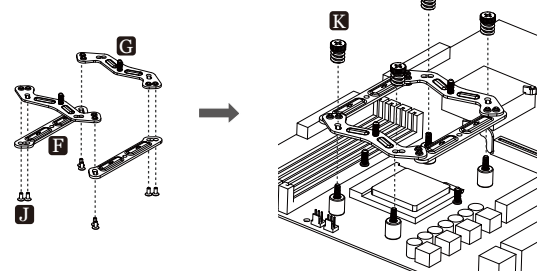


Table with 10 rows and 1 column, containing instructions for Step 5-4 in various languages: EN, DE, FR, IT, PL, ES, RU, TW, CN, KR, JP, ID.

Step 6

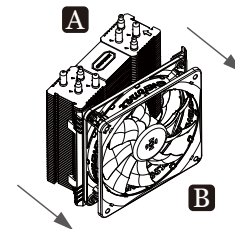


Table with 10 rows and 1 column, containing instructions for Step 6 in various languages: EN, DE, FR, IT, PL, ES, RU, TW, CN, KR, JP, ID.

Step 7

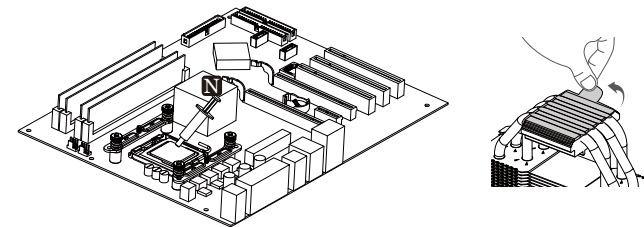


Table with 10 rows and 1 column, containing instructions for Step 7 in various languages: EN, DE, FR, IT, PL, ES, RU, TW, CN, KR, JP, ID.

Step 8

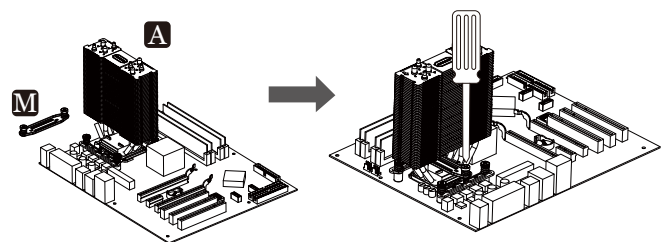


Table with 10 rows and 1 column, containing instructions for Step 8 in various languages: EN, DE, FR, IT, PL, ES, RU, TW, CN, KR, JP, ID.

Step 9

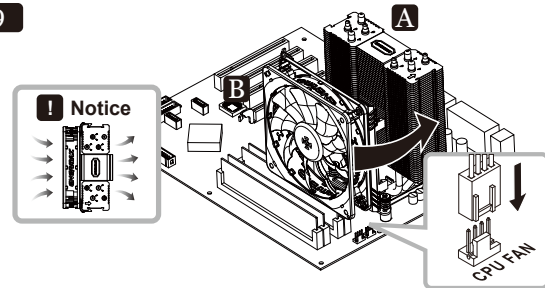


Table with 10 rows and 1 column, containing instructions for Step 9 in various languages: EN, DE, FR, IT, PL, ES, RU, TW, CN, KR, JP, ID.

Supplement \* For 2nd fan installation

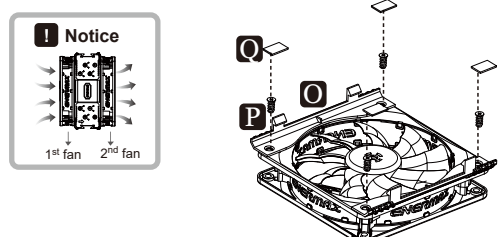


Table with 10 rows and 1 column, containing instructions for Supplement in various languages: EN, DE, FR, IT, PL, ES, RU, TW, CN, KR, JP, ID.

Supplement \* For ETS-T40F-TB version only

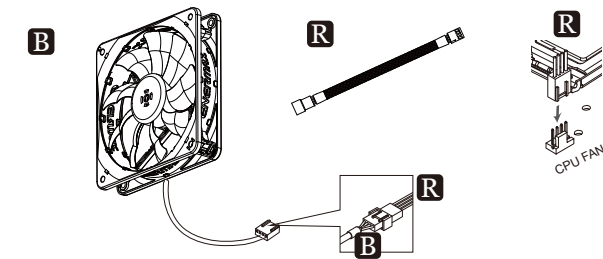


Table with 10 rows and 1 column, containing instructions for Supplement in various languages: EN, DE, FR, IT, PL, ES, RU, TW, CN, KR, JP, ID.