



Sine-wave drive

U600

**INTELLIGENT POWER OUTPUT
EXPERIENCE PAINLESS TREATMENT**



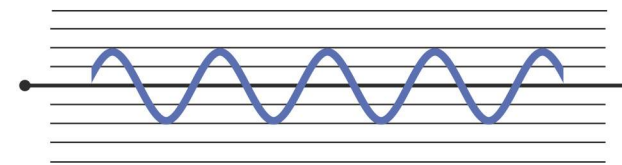
Scan and Login website for more information

FDA CE 0197

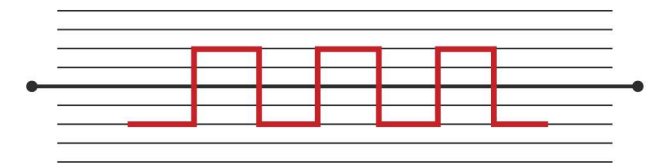
SINE-WAVE DRIVE

Optimum vibration of tips
Intelligent negative feedback

The best treatment effect
Top comfort



U600 Mild power output



Other scaler Rectangular power output

COMPLETE FUNCTIONS

Supragingival scaling



Subgingival scaling



Endo canal cleaning



SMART TOUCHING TECHNIQUE SYSTEM

Clear control panel
Ultra-sensitive
Waterproof design



G4

Supragingival scaling



P1

Periodontal scaling



E1

120° angle holder, for root canal cleaning



G5

Supragingival scaling



P4

Periodontal scaling



Components Of Tips

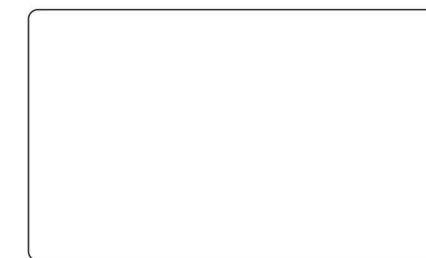
G4 , G5 , P1 , P4 , E1



GUILIN WOODPECKER MEDICAL INSTRUMENT CO., LTD.

Registration Add & Manufactory Add:
Information Industrial Park, Guilin National High-Tech
Information Park 541004 Guilin, Guangxi China
Tel:
Europe Sales Dept.: +86-773-5873196, +86-773-2125222
North America, South America &
Oceania Sales Dept.: +86-773-5873198, +86-773-2125123
Asia & Africa Sales Dept.: +86-773-5855350, +86-773-2125896
Fax: +86-773-5822450
E-mail: woodpecker@glwoodpecker.com, sales@glwoodpecker.com
Website: <http://www.glwoodpecker.com>


Distributor:



Scan and Login website for more information



E1 
 120° angle holder: Swishing anterior teeth coordinated with swished file after root canal preparation.

E2 
 95° angle holder: Swishing posterior teeth coordinated with swished file after root canal preparation.

E3 
 Using ultrasonic melt to press gutta-percha for lateral pressure, used in E mode without water.

E6 
SPECIAL MATERIAL
 Thin and flexible, used for removing foreign body in deep cannal.


E7 
SPECIAL MATERIAL
 Thin and flexible, used for removing foreign body in 1/3 cannal.

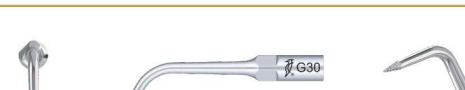
E3D 
 Diamond-coated(40µm) instrument for removing calcification and bad filling material in root canal.

P4D 
 Diamond coated(40µm), used for removing the calcification in the coronal third of the root canal and used in E mode.

G4 
 The Universal gingival tip for removing Supragingival calculus and plaque .

G5 
 Used for supragingival scaling with smooth vibration and low noise characteristics

G6 
 Used for removal supragingival calculus and plaque chunks, can use directly tip in small power, with a smooth vibration and low noise characteristics.

G30 
 Diamond-coated(40µm) ,used for preparation between pits and fissures.

G31 
 Diamond-coated(40µm), used for preparation of mesioclusion cavity and does not damage adjacent teeth.

G32 
 Diamond-coated(40µm), used for preparation of distal mesial cavity and does not damage adjacent teeth.

G33 
 Diamond-coated(40µm),used for preparation to dental veneer.

SB2 
 Diamond-coated(40µm), use with G31. After the mesioclusion cavity is completed with G31, used for the cavity inside and outside which hard to reach the outer area of preparation and polishing.

SB3 
 Diamond-coated(40µm), used with G32. After the distal mesial cavity is completed with G32, used for the cavity inside and outside which hard to reach the outer area of preparation and polishing.

P1 
 The universal subgingival tip for periodontal pocket within 4mm and adjacent surface scaling.

P3 
 Diamond-coated(40µm), used with G32. After the distal mesial cavity is completed with G32, used for the cavity inside and outside which hard to reach the outer area of preparation and polishing.

P4 
 Efficient removal of within 2mm Subgingival calculus .

P3D 
 Diamond-coated(40µm), used for expanding furcation and root surface polishing in flap surgery .

